

In This Issue	page
PRESIDENT'S MESSAGE	1
CSULB DREAM BIG.....	2-3
ENGINEER'S WEEK	3
LEGISLATIVE UPDATE/ENR TOP 25.....	4
NOV TECH TOUR.....	5
OC GEO-INSTITUTE (G-I)	6
ICSI.....	7
CA INFRASTRUCTURE SYMPOSIUM	8-9
LA YMF MINI-PSWC.....	9
GEO-INSTITUTE OC CHAPTER.....	10
CONFERENCE RECAP/AD	11
ADS	12-13
PROFESSIONAL DIRECTORY.....	14-15

DISCOVER
ENGINEERS WEEK
FEBRUARY 16–22, 2020



Los Angeles Section

Monthly: Est. 1913

ORANGE / SAN_BERNARDINO/RIVERSIDE / SAN_LUIS_OBISPO / SANTA_BARBARA/VENTURA / DESERT /
SOUTHERN SAN_JOAQUIN / METROPOLITAN LOS ANGELES

OFFICERS'S MESSAGE

Daniel Cronquist, P.E., P.L.S
Los Angeles Section President

President's Message

Octave Chanute, ASCE President 1891, is one of my engineering super heroes. A French emigrant born in 1832, he was at the forefront of sustainability and mentoring a century before the terms were invented.

Sustainability

In the mid-1870's the United States faced an ecological collapse that threatened the future of the nation. Forests were stripped, and erosion threatened vital watersheds. Railroads were a major cause of the problem, replacing 100 million railroad ties per year (6 billion board-feet of lumber annually).

The massive volume of wood was required because hemlock and pine were serviceable for only 8 months before they decomposed and required replacement.

Octave Chanute believed that civil engineers could provide a sustainable solution and extend timber life to 8 to 10 years. So, nearing retirement from the Erie Railway, he became the chair of a newly formed ASCE Committee on Timber Preservation. Wood preservation techniques had been used in Europe for many years but was not widely accepted in the United States. The final committee report was issued in 1885. By the start of the 20th century, nearly all ties and utility poles were treated and today they can remain in service for 20 to 40 years – a tremendous decrease in lifecycle cost.

Mentoring

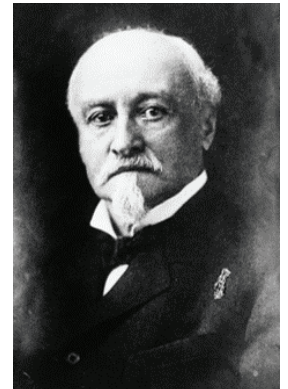
At the end of his career, Octave Chanute dedicated himself to a task considered lunacy – the study of manned flight. From the Indiana Dunes east of Chicago, Octave would spend his summers testing countless variations of airfoil design, pitch, wing span, and configuration on gliders. The results of each test were carefully recorded and charted so that he could learn from each iteration.

Octave Chanute freely shared his data and eventually found himself mentoring two young brothers from Indiana who owned a bicycle shop. When Octave first met the Wright Brothers, they were at the crisis point in their work. Octave pushed them into presenting a paper to the Western Society of Engineers, which later served to be a turning point in their careers. Octave remained an important friend and sounding board for many years and lived to see the first powered flight in 1903. Today, Octave Chanute is considered by many to be the grandfather of aviation.

Closing

My favorite part of these stories is that Octave Chanute is just a regular person. The only real superpower he has is perseverance, passion, and a willingness to share it with others. I see the same character traits in many of you and want to encourage you to do likewise.

If you want to learn more about this fascinating ASCE President, I recommend checking out the book "Locomotive to Aeromotive" by Simine Short, which is currently available from Amazon.



O. Chanute. ~1900-1910

CSULB Dream Big



ASCE CSULB Dream Big 2019 Students

ASCE Orange County civil engineers served as professionals and volunteers during the 2nd Annual ASCE CSULB Dream Big: A K-12 Civil Engineering Outreach Event on Saturday, October 19th. The event was hosted by the ASCE California State University, Long Beach (CSULB) Student Chapter, where over 240 students from local schools across Los Angeles and Orange County experienced the world of civil engineering through hands-on workshops, lab tours, a professional panel, and a screening of the Dream Big: Engineering Our World film!

The event was in partnership with the CSULB Math, Engineering, Science Achievement (MESA) K-12 Program, ASCE Orange County Younger Member Forum, and ASCE Los Angeles Younger Member Forum. Each of the student workshops were hosted by student engineering organizations, which included ASCE Student Chapters (CSULB, UC Irvine, Cal Poly Pomona, CSU Northridge), CSULB Society of Women Engineers, CSULB Society of Hispanic Professional Engineers, CSULB Engineers for a Sustainable World, Chi Epsilon (CSULB and UCI), and CSU Fullerton Institute of Transportation Engineers.



ASCE CSULB Dream Big Students and Volunteers

The student workshops featured the various civil engineering disciplines and at least one professional engineer who provided the real-world application of the activities performed during the workshop. The workshops included:

- Critical Load (Playing Cards) Challenge
- Manual Water Filtration Workshop

- Safe Landing (Egg-Drop) Challenge
- Water Pipelines Workshop
- Soil Mechanics Activity
- Traffic Jamz Workshop
- Popsicle Stick Bridge
- LEGOMan Challenge
- Foil Boats Challenge
- Spaghetti Towers
- Lab Tours (Environmental, Geotechnical, Surveying)
 - o Water Purification Demonstration
 - o Liquefaction Demonstration
 - o Total Station and Automatic Leveler Exercise



Design-Build Cardboard Box Activity

In addition, seven out of ten of the professional panelists for the middle school and high school students were ASCE OC engineers! They discussed their journey towards becoming a civil engineer and the opportunity to continually make a difference in the field. The students were able to ask questions ranging from earning a degree in engineering to overcoming challenges to redefine the industry.

Michael Baker International and Diaz-Yourman & Associates also served as sponsors for the event which helped provide the necessary



Middle School Professional Panel

funding for food, supplies, and volunteer shirts. The students also received goodie bags with school supplies such as pens, notebooks, flash drives, etc. donated by multiple local civil engineering firms: Mark Thomas, Jacobs, Huitt-Zollars Inc., AECOM, Michael Baker International, Cordoba Corporation, Caltrans, and the City of Anaheim.

Overall, the event was a huge collaborative effort, and we are grateful for all the university students and professionals who hosted, organized, and volunteered for an event that has made a positive impact on the lives of hundreds of students in our region for the second year in a row. We look forward to continuing to participate in this event for years to come and further inspire the next generation of engineers!

If you or someone you know is interested in becoming involved with K-12 events, please feel free to contact k-12chairs@asceoc.org. For future ASCE CSULB Student Chapter events, please contact president@csulbasce.org or mymf liaison@csulbasce.org.



ASCE CSULB Dream Big Volunteers

ARTICLE

Engineer's Week

by Chris Casey, PE



National Engineer's week in the United States was founded in 1951 and is held every year during the week of George Washington's birthday (February 22nd). Most Americans know George Washington as our nation's first President, however, he was also an engineer and surveyor in his own right, 140 years before the implementation of the California Board for Engineers, Land Surveyors and Geologists.

Before George Washington was the father of our country, or a general, or even a married man, Washington was a rigorous outdoorsman and had a love for drafting and map-making. Studying topography, mapping straight routes through rugged terrain, and establishing property lines were among the many tasks his skills made possible. Such practical skills are among the basics of what today we call civil engineering. These talents were used to map out many of the county boundaries in northern Virginia. Surveying in the eighteenth-century was a respectable profession and held the promise of social and financial advancement, to which Washington took full advantage.

In 1775, George Washington was appointed the first engineer officers of the Army, during the American Revolution. Since their creation, engineers have served in combat in all subsequent American wars. The Army later established the Corps of Engineers as a separate, permanent branch and gave the engineers responsibility for founding and operating the U.S. Military Academy at West Point.

Los Angeles Section *Monthly*: FEBRUARY 2020

The purpose of National Engineers Week (E-Week) is to emphasize the contributions to society that engineers make. E-Week is also a time for engineers to highlight the importance of learning math, science, and technical skills to local students. Throughout E-Week, we celebrate engineers and invite you to join us. From highways and bridges to buildings and infrastructure of all sizes, shapes and dimensions, engineers built the modern age and deserve our thanks.

ASCE chapters nationwide will be sponsoring local events to show how fun STEM careers can be and bring awareness to the impact engineers have on society. Stay tuned for one of the may events to take place at this year's Engineers Week.



State Investments and Legislative Update

by Richard Markuson, CA Region 9 Legislative Advocate



The Legislature reconvened in its last year of the two-year session on January 6. January was a busy month with only a few two-year bills moving out of their house of origin by January 31.

New Reports of Interest

The **UC Berkeley Center for Law, Energy & the Environment** released Electric Vehicles and Global Urban Adoption: Policy Solutions from France

and California. While California and France have been two worldwide leaders in policy supports for electric vehicle adoption, there remains a large unmet need in access to battery electric vehicles. During a two-day symposium in June of this year, experts from California and France met to discuss the lessons learned thus far and consider the remaining challenges to EV adoption. The results of that discussion are now available as a Symposium Brief.

The Assembly Jobs, Economic Development, and the Economy Committee has distributed a report, "By the Numbers: Jeopardizing the National Benefits of Trade through America's Busiest Port Complex," conducted by economic consulting firm BST Associates for the Port of Los Angeles, which outlines the impact of tariffs on trade through the ports of Los Angeles and Long Beach for 2018, finds that "tariffs threaten nearly 1.5 million U.S. jobs and more than \$186 billion of economic activity nationwide."

Public Policy Institute of California released its report, "A Path Forward for California's Freshwater Ecosystems," finds "they are changing in undesirable ways" due to "water and land use, pollution, introduction of nonnative species and a changing climate;" recommends that California "adopt the principles and practices of ecosystem-based management," which are "transparent, collaborative and supported by science and secure funding."

The Legislative Analyst released "Fiscal Perspectives: Tempered Expectations," brings "California's current fiscal position into perspective," says general fund is on track for a \$7 billion surplus made up of "\$3 billion in ongoing and \$4 billion in one-time components," recommends "budgeting no more than about \$1 billion of it to new ongoing commitments," cites possibilities of a recession and changes in federal policy as reasons for not committing all \$3 billion to new ongoing spending.

The Legislative Analyst's Office released "Preparing for Rising Seas: How the State Can Help Support Local Coastal Adaptation Efforts," finds "California's coastline could experience as much as seven feet of sea level rise by 2100," recommends "making state contributions to support planning efforts and project implementation at both a local

and regional scale, as well as establishing a statewide network for providing technical assistance and information on effective climate change adaptation practices."

Caltrans released 2019 Advance Mitigation Program Biennial Report on its efforts since 2017 to accelerate delivery of projects by "proactively obtaining environmental mitigation in advance of – rather than during – transportation projects," says "Department is in the process of integrating the work plan into Caltrans' planning and project delivery organizational infrastructure, with completion targeted for the end of the 2019 calendar year."

Governor's Appointments

Meredith Williams of San Francisco has been appointed director of the Department of Toxic Substances Control, where she has served as acting director since 2019 and as deputy director of safer products and workplace programs since 2013. Williams held several positions at the San Francisco Estuary Institute – Aquatic Science Center from 2006 to 2013, including interim executive director, deputy director, program director of the environmental data, information and technology program and senior project manager. She held various positions at Applied Materials from 1995 to 2005, including, business operations manager, product manager, new product development manager and senior process engineer. She was a senior research physicist at 3M from 1994 to 1995. Williams earned a Doctor of Philosophy degree.

ARTICLE

ENR Top 25 Newsmakers: Dr. Cris B. Liban, P.E.



Engineering News Record has announced that Dr. Cris B. Liban, P.E. is a Top 25 Newsmaker for 2019. Dr. Liban is the first-ever Chief Sustainability Officer for LA Metro and is the Chair of the ASCE Committee on Sustainability. Under his leadership, LA Metro has achieved 21 "firsts" including the first transit agency to develop a climate action and adaptation plan. For more information, we recommend looking at the ENR issue for January 20/27, 2020. He is also the Editor for the LA Section Newsletter.

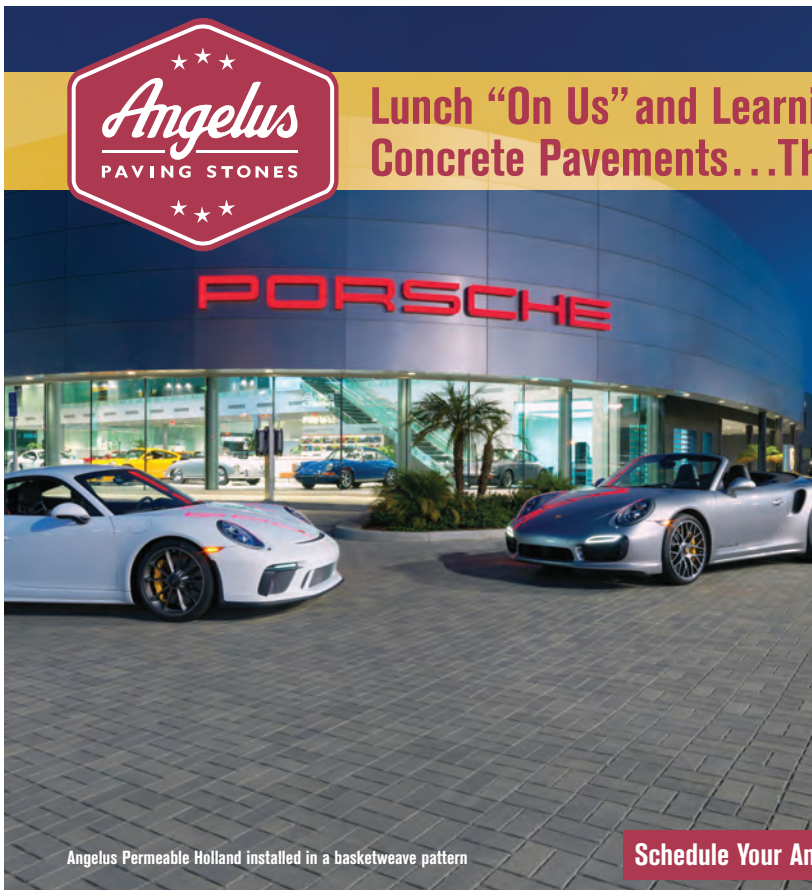
The Los Angeles Section congratulates Cris for this honor!

Nov Tech Tour

by Victor Elia, PE, QSD



In case you didn't make it, the ASCE San Bernardino/Riverside Branch along with the Younger Member Forum took a tour of Thompson Pipe Group's manufacturing facility in Rialto and it was fantastic! Thompson was such a great host and was led by Aaron Pettit and Branimir Kovac. We experienced how they make Reinforced Concrete Pipe, Reinforced Box Culverts and Flared End Sections. They roll their own rebar cages, with sparks flying to construct pipes in diameters from 12" to 144". Their 55 acre facility contains many different pipe thicknesses and sizes which we enjoyed hearing the stories of why these different pipes were ordered for specific site constraints. Thompson even performed a D-Load test after explaining the differences in trench loading between rigid pipe and flexible pipes. If you have a chance to tour this facility in the future, I would recommend it. I'm looking forward to our next learning ASCE opportunity.



Angelus Permeable Holland installed in a basketweave pattern

Lunch "On Us" and Learning about Permeable Interlocking Concrete Pavements...The Ideal Combo Meal.

ANGELUS PERMEABLE INTERLOCKING PAVING STONES (PICP) meets the US Environmental Protection Agency's criteria as a structural Best Management Practice (BMP) while helping comply with US National Pollutant Discharge Elimination System (NPDES) regulations. They are a part of Low Impact Design (LID) and are LEED credit eligible under Sustainable Sites.

REDUCE CONTAMINANTS AND DECREASE RAINWATER RUNOFF rates while providing an attractive pedestrian, parking or roadway surface that is resilient, low-maintenance and ADA compliant.

100% PERMEABLE SURFACE allows rainwater to pass through small, aggregate-filled openings between solid, high strength durable concrete paving stones and into an open-graded base where it is stored until infiltrating back into sub-soils and replenishing groundwater.

MAXIMIZE USABLE/BUILDABLE SPACE ON SITE and save on costs by reducing or eliminating the need for drainage appurtenances, storm sewers and detention or retention ponds.

EARN 1 PROFESSIONAL DEVELOPMENT HOUR (PDH) by attending a Lunch 'n Learn presented by an Interlocking Concrete Pavement Institute (ICPI) qualified instructor.

Schedule Your Angelus Lunch 'n Learn today at angeluspavers.com/lunch

ASCE Orange County Geo-Institute (G-I)

On November 1st, ASCE Orange County Geo-Institute (G-I) had a great turnout at our technical tour on vibro (aggregate) piers hosted by Hayward Baker and Layton Construction. The tour was SOLD OUT with a mix of professionals and student attendees excited to learn about this ground improvement system. After a technical presentation on the design, we went onsite and observed how the pier is constructed using a bottom-feed vibratory probe that densifies the aggregate and surrounding soil. We even got to see the rig up close and talk to the operator on quality-control tips to look out for to make sure that these piers are installed properly.

If you would like to download the technical presentation and follow our upcoming events, visit our page at:

<http://www.asceoc.org/committees/geoinstitute>



ASCE OC G-I Technical Tour attendees



Technical presentation by Dr. Jim Gingery (Hayward Baker) on the design of the vibro piers.



Field visit to observe vibro pier installation.

Following our technical tour, G-I ended the year with our 5th Annual Holiday Bowling Social & Fundraiser at Irvine Lanes on December 5th. Over thirty attendees, mixed of geo-professionals and college students, had a great time networking and enjoying a friendly bowling game with their colleagues, old and new. In the holiday spirit, all net proceeds were donated to support our local universities' G-I Student Chapters for their participation in the national 2020 ASCE G-I GeoChallenge Competition. Many thanks to our event sponsors, Hayward Baker and GMU Geotechnical, Inc., professionals, and students for supporting ASCE OC G-I and our student chapters! Although we had wrapped up our events for this year, we look forward to presenting more technical tours, seminars, and fun activities for our members in 2020. Feel free to contact us at gi@asceoc.org and join our emailing list. We look forward to seeing you in 2020!



Geo-professionals and students having an incredibowl time!

ASCE
American Society of Civil Engineers

www.ascelasection.org

International Conference on Sustainable Infrastructure (ICSI)

The ASCE's International Conference on Sustainable Infrastructure (ICSI) brings together scholars, engineering professionals, and policymakers around the world. This year, Los Angeles hosted the 2019 ICSI at the Millennium Biltmore Hotel, a historic-cultural landmark built in 1923 that is in the heart of Los Angeles just a block away from Pershing Square. There would not be a better choice than the Biltmore Hotel for hosting the conference. It hosted several major events in the past, including the Oscars and the 1960 Democratic presidential nominee John F. Kennedy's acceptance speech. Upon arrival at the hotel lobby, the attendees were submerged in an enormous amount of art, such as murals, sculptures, and tapestries. The glamorous but elegant style invited attendees into each ballroom where the technical sessions were held.

One of the hot topics discussed during the conference was the upcoming 2028 Olympics. Los Angeles will be the host of both the 2028 Summer Olympics and Paralympics. Building stadiums and facilities to only host the Olympic Games has become an expensive and wasteful investment. How can we prepare for the Olympic Games and accommodations for the spectators without building facilities that will be abandoned or decommissioned after the Olympics? Los Angeles has existing infrastructures that can be reused for major events. Steven Cheung of the LAEDC suggested that instead of building new facilities, we would utilize the existing stadium such as the Rose Bowl and Coliseum. Does the existing transportation network have enough capacity for the spectators to travel to the games and not cause disruption and delay the regional residents' daily commute? The Los Angeles County Metropolitan Transportation Authority (Metro)'s Twenty-Eight by '28 initiative includes potential 28 Metro projects to be completed by the year 2028. The initiative includes projects such as the expansion of the existing light rail lines as well as improvement on existing highway facilities. All these challenges require solutions that are sustainable in the long term and innovation in engineering and project management in order to be ready for the 2028 Olympics.

The main conference officially kicked off on Thursday, November 7th. More than 370 attendees filled up the Crystal Ballroom as the conference chair Mark Norton welcomed everyone. Project poster exhibits were displayed in Biltmore Bowl throughout the whole conference as attendees moved through technical sessions. Some hot topics discussed and presented during the conference are the sea-level rise and storm surge. The conference wrapped up on Saturday, November 9th with a workshop for sustainability leaders.

On Saturday, November 9th, ASCE's Workshop for Sustainability Leaders at the ICSI discussed the obstacles that sustainability professionals and management often face that prevent the delivery of sustainable infrastructure projects. The workshop's purpose was to present these common obstacles encountered and work in teams to collaborate and identify solutions that promote widespread acceptance and adoption. The event was broken down into presentations, Q&A, breakout group discussions and reporting.

The first presentation was on Early Stakeholder Engagement by Eva Moir, which focused on the obstacles and efforts to involving stakeholders early on in a sustainable infrastructure project.

Following this presentation, Gabe Cira presented a project called the Emerald Tutu. The Emerald Tutu is a coastal resilience infrastructure project located in the Boston harbor consisting of circular disks placed in the water to dampen waves from extreme weather. The major obstacles that were encountered by the project team included finding a base material that would avoid the release of microplastics, funding & stakeholder engagement, and permitting.

The third presentation by Linda Bybee focused on Failures in Regional Environmental Regulations and highlighted Community Ecosystem Service Banks as a means to promote sustainability and by making it meaningful in the community.

The fourth presentation focused on Sustainable Infrastructure Project Delivery from a consultant's perspective, by Mouna Senhaji. The main idea conveyed in this presentation was investing in sustainability at the early stages of a project, through the use of rating indicators such as Envision and BIM software for autonomous, real-time monitoring on projects.

The fifth presentation focused on stakeholder buy-in on sustainability efforts. Youn Kim, the speaker of this presentation, touched on the challenges of stakeholder buy-in and ideas on how to approach this major obstacle. He focused on how to present values added to a proposal or design.

After the presentations, the audience broke up into five groups and worked with the presenters to address the following topics per each presentation:

1. Do these challenges persist and how do we mitigate them?
2. Discuss process to eliminate these obstacles
3. Address progress and opportunities for sustainable civil infrastructure and engineering practice

The discussion was very insightful with productive conversations between the workshop facilitators, presenters, and attendees. As part of the Stakeholder Buy-In breakout group, some of the main take-aways from the discussion included thinking about how to present a value proposition to the stakeholder. It is important to strategically package the sustainable infrastructure project or improvement as a tangible and feasible solution backed with data, such as cost savings for the entire project lifecycle. It was agreed that different disciplines (ie. roadway improvement and active transportation groups) should work together to determine the net benefit - the overall cost should be equalized by one group's cost additions and another's savings. Finally, it is important to approach the stakeholder with a strong understanding of the industry's and stakeholder's current business practices and goals, to shape the proposal to clearly communicate "What's in it for me?" Our job as a sustainability professional is to foster behavior change through developing sustainable and resilient infrastructure; this process does not only involve stakeholders' interests, engineers' observations and judgment but also the community input, thus fostering successful and effective collaboration between all.

2020 California Infrastructure Symposium and Awards Dinner Preview

by Adam Killinger, P.E., G.E., M. ASCE, Region 9 Awards Committee Chair



The 2020 California Infrastructure Symposium and Awards Dinner will be held in Sacramento at Hilton Sacramento Arden West on Friday April 3rd, 2020. The 2020 California Infrastructure Symposium this year is a partnership between the ASCE Sacramento Section and ASCE Region 9. The Symposium will be an all-day event attended by engineers, educators, elected officials, professionals and the general public. Every year the attendees and participants

of these conjoined events inform, educate, network, and honor influencers and decision makers of our built environment making this a must-attend event. This year's event is in our state capital's backyard, and you can expect legislators will be taking notice and joining in the conversation. So come out, learn something new, network, and celebrate civil engineering.

The Venue: The Hilton Sacramento Arden West is located at 2200 Harvard Street in Sacramento. The 2020 California Infrastructure Symposium and the 2020 Awards Dinner will conveniently be held at the same location. Make sure you book your room early! <http://www.caisregion9.org/>

The Lineup: The Symposium will be comprised of two infrastructure tracks with the following speaker topics:

Transportation and Development Track will Include:

- Innovative Roadway and Aviation Solutions to Raise the Report Card Grades
 - o 2019 ASCE Report Card for California's Transportation Infrastructure
 - o Roadway Innovation in Contra Costa County
 - o Roadway Innovations in Orange County
 - o San Francisco International Airport (SFO) Future Enhancements
- Transportation, Economics, and Housing: Federal Government Perspectives
 - o Federal Government Panel
- Transportation, Economics, and Housing: California State Capital Perspectives
 - o Transportation and Economic Development at the Intersection of Two Key Transportation Corridors
 - o Addressing California's Grand Housing Challenge While Reducing VMTs and GHGs
 - o Leveraging Transportation to Transform the Central Valley into an Economic Powerhouse
- Transportation Innovations for Reducing Greenhouse Gases and Vehicle Miles Traveled
 - o Urban and Rural Transport Connections to Meet Diverse Mobility Goals

- o Bringing ACE to Midtown and the Sacramento Airport through Active Legislative Engagement
- o SacRT Forward - Bringing Efficiency, Connectivity and Economic Prosperity to the Region

Water Resources and Environment Track will Include:

- Future of Water Supply Management in California
 - o Governor's Water Portfolio
 - o Development of Water Supplies, and Impact of Changes to Delta Conveyance
 - o Safe Drinking Water Plan 2020
- Safeguarding Lives and Property in California's Central Valley
 - o Water Resources Development Act (WRDA) and Supplemental Funding for Levee Improvements
 - o Oroville Dam Post-Repair Comprehensive Needs Assessment – What's Next
 - o Update on Dam Safety Regulations in California
- Solutions to California's Water, Energy, and Environmental Challenges
 - o Addressing the Implications of Public Safety Power Shutoffs (PSPS) on Public Water Supply
 - o Impact of Cannabis Cultivation on Municipal Water Supply
 - o Starting at the Source – Special Considerations for Foothill Water Agencies
- Sustainable Surface and Groundwater Practices in an Uncertain Future
 - o Recent Trends in Integrated Water Planning
 - o Sustainable Groundwater Supply
 - o Pure Water Monterey – Advanced Water Recycling Project

Speakers for the above topics will include many professionals from public agencies and companies across California. Keynote speakers will include:

- Barry Broome – CEO, Greater Sacramento Economic Council
- Felicia Marcus – Former Chair, California State Water Resources Board
- Jean-Louis Briaud – 2019 President-Elect, American Society of Civil Engineers (ASCE)

The Infrastructure Symposium will be immediately followed by a networking reception, and then the Awards Dinner Banquet and Ceremony.

The Party: Each year, the many members and individuals who form the foundation of the ASCE Sections, Branches, Institutes, Younger Member and Student chapter groups in Region 9, take the time to recognize the outstanding projects and the selfless efforts of their peers, who contribute to the growth and evolution of the civil engineering profession, and the improvement of the infrastructure we all depend upon. Each group's annual awards program nominates and recognizes praiseworthy individuals and projects within their geographic areas. Each Section's award winners

(San Francisco, Sacramento, San Diego and Los Angeles) are then nominated to Region 9 in October each year. Region 9 then selects and recognizes outstanding projects and individuals from across the State of California the following spring during the annual Awards Dinner Ceremony. Join the party and celebrate the individuals and achievements of our civil engineering community!

For more information and to register for the 2019 California Infrastructure Symposium and Awards Dinner Banquet and Ceremony,

please bookmark the California Infrastructure Symposium website at <https://caisregion9.org/>, the Sacramento Section website at <https://asce-sacto.org/>, or the Region 9 web site at <http://regions.asce.org/region9/>. Opportunities to get involved in the planning or to sponsor the Infrastructure Symposium and Awards Dinner are available. We look forward to seeing all of you in Sacramento on April 3rd!

ARTICLE

ASCE LA YMF Hosts Mini-PSWC

The Mini Pacific Southwest Conference brought together over 200 students from all over LA Section at the Frank Bonelli Park on Sunday, November 7th. The event included Kayak Races, Volleyball, Ultimate Frisbee, Kan Jam, Jeopardy and a Media Challenge.

Instead of the Concrete Canoe Races that take place during the student conferences, we took a different approach and did Kayak Races! Students from each school competed and the schools with the shortest times were the champions for this competition! The top three winners for the Kayak Races were Loyola Marymount University (LMU) in 3rd place, University of Southern California (USC) in 2nd place, and California State University Los Angeles (CSULA) in 1st place.

All the schools came in strong and ready to compete in the sports competitions! For Volleyball, California State University Northridge (CSUN) came in 2nd place and University of California Los Angeles (UCLA) took the lead with 1st place.

Our overall top three winners were Loyola Marymount in 3rd place, California State University Fullerton in 2nd place, and California State University Northridge in 1st place.



ASCE Geo-Institute Orange County Chapter

by Mr. Michael Givens, Ph.D., P.E., P.G., Group Delta, Chair, ASCE Orange County Geo-Institute (OC G-I)



The Geo-Institute (G-I) Chapter is part of the Orange County Branch that serves the American Society of Civil Engineers (ASCE) Los Angeles Section, its members and supporters by conducting periodic technical presentations, technical on-site tours, professional development events, and networking/fundraising social events. The G-I OC Chapter was formed in January 2013 to host various events to exchange knowledge and information with the goal of improving the Orange

County geotechnical community. We have appreciated and found a tremendous benefit in expanding our members learning/networking opportunities by cohosting events with other ASCE Chapters and Organizations, such as events in the past year with G-I LA Branch, ASCE OC Branch, ASCE OC Professional Development Committee (PDC), and Cal-Geo.

Due to an active local geotechnical community, we have developed an annual tradition of holding a February half-day professional development event to kick off the year's events, gathering for technical Lunch/Dinner meetings typically in May, July, August/September, November and hosting a December Bowling Social that all proceeds are donated to either a charity or local Students participating in Geo-Wall competitions. Our activities from the past year are summarized below:

The OC G-I and PDC co-hosted a half-day seminar on February 22nd in Irvine, California. The seminar covered a wide spectrum of ground improvement methods and was attended by nearly 100 practicing engineers, academics, and students. Each of the three presenters provided a unique insight to their field of expertise. The seminar concluded with a panel discussion that provided attendees an opportunity to ask the presenters about how they could apply different ground improvement methods to their projects.

The OC and LA G-I Chapters co-hosted a dinner meeting featuring Professor Robert Kayen of UC Berkeley, UCLA, and USGS on May 28th. Dr. Kayen presented an 11-year project in which he collected new shear wave velocity data from 350 sites to develop and enhance seismic soil liquefaction correlations. The event was held at the Ayres Hotel in Costa Mesa and was attended by over 90 local geo-professionals.

The OC Branch and G-I co-hosted a luncheon featuring Professor Scott J. Brandenburg of UCLA, who presented on "Effects of Earthquakes to California's Water Distribution System" on July 18th. Professor Brandenburg discussed an extensive research study on the Sacramento/San Joaquin Delta, which included field testing, centrifuge modeling, laboratory testing, development of fragility functions, and development of a system reliability analysis procedure. With Magnitude 6.4 and 7.1 earthquakes occurring in Ridgecrest,

California two weeks prior to the luncheon, this topic was particularly relevant to the 90+ local members who attended.

The OC G-I co-hosted an August dinner meeting with CalGeo in Santa Ana featuring a presentation by Dr. David A. Baska of Terracon Consultants. The presentation covered some of the changes that will be implemented in the 2019 California Building Code, such as a more widespread requirement for site-specific ground motion studies, enhancing site-specific procedures, and providing threshold values for differential settlement and lateral spreading, to name a few. The meeting was attended by over 110 local practicing engineers, academics, and students.

OC G-I held the 5th Annual Bowling Social & Fundraiser that was attended by 30+ geo-professionals and students that came together for a fun night of bowling at Irvine Lanes. Attendees enjoyed two hours of bowling, food and drinks, bonding with old and new friends, and were entered in a raffle at the end of the night. All net proceeds from the Bowling Social & Fundraiser will be donated to help our local universities' Student Chapters participate in the upcoming 2020 Geo-Congress Student Competitions.

The current G-I OC Board of Directors are:

CHAIR: Mr. Michael Givens, Ph.D., P.E., P.G., Group Delta

VICE CHAIR: Mr. Ali Bastani, Ph.D., P.E., G.E., GMU Geotechnical

TREASURER: Mr. Mohsen Mahdavi Kharanaghi, Ph.D., P.E., Group Delta

SECRETARY: Mr. Sunil Arora, P.E., Hayward Baker

FIRST DIRECTOR: Ms. Adeleine Tran, P.E., Jacobs

PAST CHAIR: Mr. Pavlo Chrysovergis, P.E., SPC Geotechnical

We are extremely appreciative of our local geotechnical community, student involvement, willingness of speakers to contribute their time and all our wonderful corporate sponsorship throughout the year. To learn more about the ASCE OC G-I Chapter, please visit <http://www.asceoc.org/committees/geoinstitute> or contact Michael Givens, Chair, with any questions or suggestions for future events. We are looking forward to a productive 2020.



Conference Recap



Regions 8 & 9 held the Multi-Region Leadership Conference (MLRC) and Western Region Younger Member Council (WRYMC) in San Francisco from January 23 – 25, 2020. The event had a record attendance of 118 members from the Los Angeles Section, which included 48 students from 9 schools. For three days our members learned more about leadership and networked with colleagues from throughout the western states.

Next year the conference will be hosted in Orange County. Those interested in volunteering to plan or sponsor the event should contact the Orange County YMF for more details. In 2022, WRYMC will be held in Salt Lake City, Utah.



www.ascelasection.org

One of our traditions at these conferences is to host an LA Section dinner, which drew 125 guests at Fattoria e Mare Italian Restaurant in Burlingame. The LA Section YMF Liaison, Chirath Karunathilake, planned the dinner and he deserves our thanks.

**"DRIVING THE ECONOMY
FORWARD WITH INFRASTRUCTURE"**

**CA INFRASTRUCTURE
SYMPOSIUM** **APRIL 3
2020**
& AWARDS DINNER
Hilton Sacramento Arden West

SAVE THE DATE

ASCE **ASCE**
SACRAMENTO SECTION REGION 9

KEYNOTE SPEAKERS:
Barry Broome, CEO of the Greater Sacramento Economic Council
Felicia Marcus, Former Chair, California State Water Resources Control Board
Jean-Louis Briaud, Ph.D., PE, D.GE, DIST.M. ASCE, 2019-2020 ASCE President-Elect
[More information at www.caisregion9.org](http://www.caisregion9.org)



Cordially Invites You to the

2020 LIFE MEMBER INDUCTION CEREMONY & BRUNCH March 7, 2020

In honor of those members who have advanced to
Life Member status in the society and in recognition of their career achievements.

Keynote Speaker:
ASCE National President-Elect
Dr. Jean-Louis Briaud, PhD, P.E., D.GE, DIST.M.ASCE

Members & Guests: \$40.00 per person

Students: \$25.00 (\$20 refunded after event)

Full Table Sponsor: \$400.00

(4 seats for Sponsor & 6 for Honored Life Members/Students)

Half Table Sponsor - \$200.00

(2 seats for Sponsor & 3 for Honored Life Members/Students)

Monterey Hill Steakhouse

3700 W. Ramona Blvd.

Monterey Park, CA 91754

Reception: 11:00 am Brunch: 11:30 am Program: 12:30 pm - 2:00 pm

Lunch: Chicken Chardonnay, Vegetarian available

Reservation must be received by Friday, February 28, 2020.

-----RETURN COUPON-----

Return coupon and check to:
ASCE Los Angeles Section, 1405 Warner Ave., Ste. B, Tustin, CA 92780

Name (for name tag): _____

Firm: _____ Phone: () _____

Address: _____

City: _____ State: _____ Zip: _____

Guest Name(s) (for name tag): _____

Check is enclosed for \$ _____ for _____ guest(s)/member(s)/table.

of chicken _____ # of vegetarian _____

Register online at www.ascelasection.org.



CONSTRUCTION INSTITUTE SUMMIT 2020

The Westin Los Angeles Airport Hotel | February 20-22

Our Vision Is 20/20: Challenge the Past and **ENGINEER TOMORROW**



REGISTER NOW! Use code CILA20C150 and save \$150*

Shaping Leaders in the Construction Industry

Join contractors, owners, designers, and other construction industry stakeholders from all over the country to meet and share new developments and innovative practices in the construction industry.

**Registration code is for local members ONLY.*



44 BREAKOUT SESSIONS



2 PLENARY SESSIONS



2 TECHNICAL TOURS



YOUNG PROFESSIONALS FORUM




UP TO 17 PDHs



TIME DISTRIBUTION

- 4.5 Hours with Top Leaders in Plenary Sessions
- 11 Hours of Technical Breakouts in 4 Concurrent Tracks
- 8 Hours of networking opportunities including receptions, coffee breaks, and meals

For exhibitor and sponsorship opportunities, please contact Katerina Lachinova, CI Director at klachinova@asce.org or Drew Caracciolo, Sales Manager at dcaracciolo@asce.org.

Follow us on  @CI_ASCE and join the conversation using #CISummit2020.

Organized by Leading Construction & Engineering Professionals from the 17K Construction Institute Membership*

59% Private | 20% Education | 12% Government/Military | 2% Other

*Membership profile based on professionals; student members not included

REGISTER NOW at www.cisummit.org/registration

AES Advanced Earth Sciences, Inc.
Geotechnical and Environmental Consultants

Kris Khilnani, PE, GE - President
Dr. Sujl Somasundaram, PE, GE - Principal Engineer
Grant Miller, PG, CEG - Principal Geologist

(949) 379-2450 FAX: (949) 379-2470
9307 Research Drive Irvine, CA 92618 Website: www.aessciences.com

ADVANCED ENGINEERING SOFTWARE

Software written & supported by the
AUTHORS OF THE COUNTY MANUALS

advancedengineeringsoftware.com
SD: (760) 510-5940, OC: (657) 229-0090

AECOM McGraw-Hill Construction

With offices throughout Southern California,
we deliver expert solutions for our clients.

One California Plaza
300 South Grand Avenue
Los Angeles, CA 90071
T: +1 213 353-1100
www.aecom.com

amec foster wheeler

- Geotechnical Engineering
- Construction Materials Inspection/Testing
- Construction Management
- Environmental Science and Engineering
- Earthquake-Related Services
- Air Toxics and Health Risk Assessment

James J. Weaver PE, GE
Tel (323) 889-5300
Fax (323) 721-6700

6001 Rickenbacker Rd
Commercia, California
USA 90040-3031
www.amecfw.com

Cannon
ENGINEERING • PLANNING • CONSTRUCTION

J. Eric Porkert, PE
General Manager and Senior Principal Engineer

Public Infrastructure; Land Development;
Education; Energy; Survey & Mapping;
Aerospace/Defense

310.664.1166
www.CannonCorp.us

CASC
Engineering and Consulting

Civil Engineering Environmental Engineering Land Planning
Landscape Architecture Surveying & Geomatics
Water Resources

www.cascinc.com

CHJ CONSULTANTS IS NOW A TERRACON COMPANY!

CHJ Consultants
A Terracon Company

1355 E. Cooley Drive | Suite C | Colton, CA 92324
(909) 824-7311 | chjconsultants.com

Environmental • Facilities • Geotechnical • Materials

CWE

Civil Engineering
Water Resources
Stormwater Management
Environmental
Construction Management

Certified B(a), DBE, MBE, SBE

1561 E. Orangethorpe Avenue
Suite 240
Fullerton, CA 92631
Telephone (714) 526-7900
Fax (714) 526-7004
info@cwecorp.com

CIVIL • WATER • ENVIRONMENTAL

DAVID EVANS AND ASSOCIATES, INC.

TRANSPORTATION
WATER RESOURCES
LAND DEVELOPMENT
ENERGY
SURVEYING GEOMATICS
MARINE SERVICES

CALIFORNIA LOCATIONS
Los Angeles | Ontario | San Diego
Santa Clarita | Temecula | Tustin | Victorville

800.721.1916
www.deainc.com

DAVID R. GRAY, INC.
Surveying • Subdivisions • Mapping

David R. Gray
CEO / Principal Land Surveyor

67 Via Alameda, Suite 609
Camarillo, CA 93012

(805) 987-3945
Fax: (805) 987-1555
david@drgrayinc.com

DIAZ-YOURMAN & ASSOCIATES

Christopher M. Diaz, PE, GE
Principal

Geotechnical Services

1616 East 17th Street Santa Ana CA 92705-8509
Tel. (714) 245-2920 • Fax (714) 245-2950 • Cell (714) 412-2093
chris@diazyourman.com www.diazyourman.com

Earth Mechanics, Inc.
FOUNDATION • RETENTION & EROSION

Foundation Design
Seismic Evaluation
Soil-Structure Interaction
Field Investigation and Laboratory Testing
Grading and Foundation Inspections

www.earthmech.com
San Marcos Fountain Valley Hayward
760.736.8222 714.751.3826 510.562.8883

GENTERRA Consultants, Inc.

Joseph J. Kulikowski, P.E., G.E.
President and Senior Principal Engineer

15375 Barranca Parkway, Building L
Irvine, California 92618
Tel: 949.753.8766
Fax: 949.753.8887
joekul@genterra.com
www.genterra.com

CIVIL ENGINEERING • GEOTECHNICAL ENGINEERING • DAMS AND LEVES
CERTIFIED SMALL BUSINESS ENTERPRISE
SERVICES PROVIDED NATIONWIDE

GeoPentech
Geotechnical & Geosynthetic Consultants

- Geotechnical Engineering
- Geo-Earthquake Engineering
- Seismic Hazards Evaluation
- Soil Dynamics/Vibrations
- Engineering Geology
- Hydrogeology
- Seismic Geology
- Forensic Studies

Sarkis Tatunian, Principal Geotechnical Engineer
5251 California Avenue, Suite 210
Irvine, California 92617
Phone: (714) 796-9100; Fax: (714) 796-9191
Web Site: www.geopentech.com

GPI
GEOTECHNICAL PROFESSIONALS, INC.

James E. Harris, G.E.
Byron Konstantinidis, G.E.
Paul R. Schede, G.E.

5736 Corporate Ave.
Cypress, California 90630
(714) 220-2211 Fax (714) 220-2122
www.gpi-ca.com

GREGG

Phone: (562) 427-6899
Fax: (562) 427-3314
Email: info@greggdrilling.com
Web Site: www.greggdrilling.com

GREGG DRILLING & TESTING, INC.

- ENVIRONMENTAL and GEOTECHNICAL DRILLING
- WELL INSTALLATION
- CONE PENETRATION TESTING

2726 WALNUT AVE. - SIGNAL HILL, CA 90755

GROUP DELTA CONSULTANTS

GEOTECHNICAL ENGINEERING
MATERIALS TESTING & INSPECTION
Serving Southern California since 1986

Michael Reader, G.E.
Principal Engineer
Tom Swank, G.E.
Principal Engineer

Group Delta Consultants, Inc.
Los Angeles County: (310) 320-5100
Orange County: (949) 609-1020
San Diego County: (619) 524-1500
www.GroupDelta.com

gsi Geotechnical Stabilization, Inc.

Amer R. Al-Alusi, P.E.
President
alusi@gsigrout.com

Chemical Grouting Compaction Grouting
PressGrout Piles Helical Piers

1566 Sterling Court • Escondido, CA 92029-1208
Phone (760) 489-6696 • Fax (760) 489-6697

Hall & Foreman, Inc.

IS NOW
DAVID EVANS AND ASSOCIATES, INC.

800.721.1916
www.deainc.com
www.hfinc.com

CALIFORNIA LOCATIONS: Los Angeles • Ontario • Sacramento • San Diego
Santa Barbara • Santa Clarita • Temecula • Tustin • Victorville

Ideas transform communities

hdr hdrinc.com

Kiewit

KIEWIT INFRASTRUCTURE WEST CO.
10704 Shoemaker Ave., Santa Fe Springs, CA 90670
(562) 946-1616
www.kiewit.com

K&S KRIEGER & STEWART Engineering Consultants

Water • Wastewater • Recycled Water • Storm Water
Planning • CEQA/NEPA • Surveying
Design • Construction Management • Inspection

Engineering the Details. Because Details Matter
Riverside, CA 92501 • 951-683-6990 office
www.kriegersandstewart.com

KEHOE TESTING & ENGINEERING

- Cone Penetration Testing (CPT)
- Direct Push Soil, Water & Vapor Sampling
- Truck Mounted, Track & Ltd. Access Rigs

Soil Testing & Sampling Services
for Geotechnical & Environmental Consultants

5415 Industrial Drive
Huntington Beach, CA 92649-1518
(714) 901-7270 (714) 901-7289 fax

STEVE KEHOE, P.E.
PRESIDENT

PROFESSIONAL PAVEMENT ENGINEERING
Since 1969 | VSB | Registered Civil Engineer

Pavement Testing, Analysis and Design
AASHTO Accredited Laboratory
CALTRANS Certified Technicians
OGQA Testing Services
FWD Pavement Deflection Testing
OPR Pavement Thickness Scanning

LM
LaBelle Marvin
2700 E. Grand Avenue | Santa Ana, CA 92705
www.labellemarvin.com | Office (714) 546-3488
email: gmorris@labellemarvin.com

Geotechnical Environmental Site/Civil

LANGAN

www.langan.com 213.943.1310

Los Angeles Irvine Oakland Sacramento San Francisco San Jose
CA NJ NY CT PA OH DC VA FL TX ND

Leighton Consulting, Inc.

866-LEIGHTON

Thomas C. Benson, Jr., PE, GE | President and CEO

Geotechnical | Environmental | Testing and Inspection

Michael Baker INTERNATIONAL *We Make a Difference*

Planning/Urban Design • Transportation/Traffic
Land Development • Water Resources • Structures
Survey/Mapping • Public Works • Surface Water

801 S. Grand Avenue, Suite 250, Los Angeles, CA 90071
Anna Lantin, PE, Senior Vice President, (949) 472-3461

mbakerintl.com

MNS ENGINEERS INC.

SERVICES
Civil Engineering
Construction Management
Surveying

MARKETS
Transportation
Water Resources
Federal
Government

BUELLTON • LONG BEACH • PASADENA • SALINAS
SAN JOSE • SAN LUIS OBISPO • SANTA BARBARA • WESTLAKE VILLAGE

NMG
Geotechnical, inc.

Hayim Ninyo
Ted Miyake

17991 Fitch, Irvine, CA 92614
Phone (949) 442-2442 Fax (949) 476-8322
E-Mail: hinyo@nmgeotechnical.com
www.nmgeotechnical.com

PACE
Advanced Water Engineering

...in partnership with nature

- Water / Wastewater
- Mannmade Lakes / Streams
- Fountains / Pools
- Stormwater Management
- River Engineering
- River / Wetland Restoration

WWW.PACEWATER.COM
HEADQUARTERS
17520 Newhope Street, Suite 200 | Fountain Valley, California 92708
main: 714.481.7300 fax: 714.481.7299
ADDITIONAL LOCATIONS
SCOTTSDALE, AZ • BEIJING, CHINA

PARSONS

100 W. Walnut Street
Pasadena, California 91124
(626) 440-3355 • Cell: (626) 710-0494
Fax: (626) 440-6337
satish.kamath@parsons.com

Satish Kamath, P.E., BCEE
Vice President

www.parsons.com

Port of LONG BEACH
The Green Port

4801 Airport Plaza Drive, Long Beach, CA 90815

PSOMAS

Civil Engineering Land Surveying
Construction Management Environmental Consulting

Balancing the Natural and Built Environment

Project X Corrosion
MBE • DBE • SBE • SBA 8(a)

Soil Testing • Metallurgy Lab
Corrosion Control Consulting
Thermal & Forensic Engineering

Ed Hernandez, PE, NACE CCT
info@projectxcorrosion.com

Phone: 213-928-7213 • ProjectXcorrosion.com

rrm design group

CIVIL ENGINEERS • STRUCTURAL ENGINEERS • SURVEYORS
ARCHITECTS • LANDSCAPE ARCHITECTS • PLANNERS

rrmdesign.com

Stantec

We bring infrastructure projects to life

523 West 6th Street, Suite 1200
Los Angeles, CA 90014
askstantec@stantec.com

Design with community in mind
stantec.com

Civil Engineering • Water Resources • Construction Management
Environmental • Surveying • Program Management • Inspection

TKE ENGINEERING INC.

2305 Chicago Avenue - Riverside - CA - 92507
Ph. (951) 680-0440 - Fax (951) 680-0490
www.tkeengineering.com

www.vacconsultinginc.com

VA CONSULTING

Max Vahid, P.E.
President and CEO
maxvahid@vacconsultinginc.com
Tel: 949.474.1400 • Fax: 949.261.8482

Engineering Services In:
Flood Control / Drainage / Water Quality
Potable Water / Recycled Water / Wastewater
Transportation / Traffic / Plan Checking
Structural / Land Use Planning / Site Development
Surveying / Construction Management

Offices In: Irvine • Corona • Palm Desert

VALUED ENGINEERING, INC.

600 N. Mountain Avenue, Suite #C102
Upland, CA 91786
Office: (909) 982-4601
Cell: (909) 927-7347
jeff@valued-eng.com
www.valued-eng.com

Jeff D. Meiter, LS, RCE
President

CALL FOR COMMITTEE MEMBERS

WATER POLICY

Dolores Salgado - dsalgado@iecorporation.com

LEGISLATIVE

Vacant - sking@octa.net

SOCIAL MEDIA COORDINATOR

Vacant - sking@octa.net

DISASTER PREPAREDNESS

Dr. Keith Thomsen via sking@octa.net

ASCE
LOS ANGELES SECTION



Reminder:

Copy deadline for the April 2020 issue is March 1, 2020; copy deadline for the March 2020 issue is April 1, 2020.

National ASCE (800) 548-2723 (ASCE)
Access National ASCE at: www.asce.org
L.A. Section web site at:
www.ascelasection.org

MATERIALS SUBMISSION INFORMATION

All graphic materials submitted for use in the ASCE newsletter should have all fonts outlined, and links included; EPS or PDF files preferred. Other formats are Adobe InDesign or Adobe Illustrator (any version); additional acceptable file formats are JPEG or TIFF files (minimum 300 dpi). Images embedded in Microsoft Word documents should be sent separately, at a minimum resolution of 300 dpi at the display size desired. Collected files, including links and fonts, should be compressed and e-mailed, or sent on CD or Zip disk (provide return address). Business cards can be submitted electronically as well, or send clean, crisp, B&W laser print, unfolded. This publication's size is 8½" x 11".

Los Angeles Section

Monthly: Est. 1913

1405 WARNER AVE.
SUITE B
TUSTIN, CA 92780

POSTMASTER: THIS CONTAINS TIME-SENSITIVE MATERIALS.
PLEASE DELIVER PROMPTLY.



This newsletter is printed on
Forest Stewardship Council
(FSC)-certified paper using
soy-based ink.

**Please contact ASCE Membership at
1-800-548-ASCE for any address changes.**

ASCE Los Angeles Section Officer's Roster: 2019-2020

President	Daniel Cronquist, P.E., P.L.S.	AECOM	(661) 283-2331	daniel.cronquist@aecom.com
President-Elect	Seema Shah-Fairbank, Ph.D., P.E.	Cal Poly Pomona	(909) 869-3954	shahfairbank@cpp.edu
Past President	Steven King, P.E.	Orange County Transportation Authority	(714) 560-5874	sking@octa.net
Secretary	Amber Shah, P.E.	City of Laguna Hills	(949) 707-2657	ashah@lagunahillscsca.gov
Treasurer	Melissa Barbosa, P.E.	Azusa Light & Water	(626) 812-5173	mbarbosa@ci.azusa.ca.us
Vice-President Student Activities	Sudarshan Kurwadkar, Ph.D, P.E.	California State University Fullerton	(657) 278-2457	skurwadkar@fullerton.edu
Vice-President Technical Groups	Jose Hernandez, P.E.	KPFF Consulting Engineers	(562) 437-9100	jhernandez@kpffspd.com
Desert Area	Charles Parkes, P.E.	City of L.A. Dept. of Water & Power	(760) 873-0204	charles.parkes@ladwp.com
Metropolitan Los Angeles	Christopher Sheppard, P.E.	LA County Dept. of Public Works	(626) 458-5163	csheppard@dpw.lacounty.gov
Orange County Branch	Ravi Shah, P.E.	Mark Thomas	(949) 247-3953	rshah@markthomas.com
San Bernardino/Riverside Counties	Chet Robinson, P.E., G.E.	City of Menifee	(951) 723-3879	crobenson@cityofmenifee.us
San Luis Obispo	Wes Thomson, P.E.	County of San Luis Obispo DPW	(805) 788-2101	wthomson@co.slo.ca.us
Santa Barbara/Ventura Counties	Jeff Tawakoli, P.E.	Twining, Inc.	(805) 644-5100	jtawakoli@twining.com
Southern San Joaquin	Roani Sandoval	City of Bakersfield	(661) 326-3433	rsandoval@bakersfielddreeways.us
Younger Member Forum	Chirath "Chuck" Karunatilake, E.I.T.	Mark Thomas	(310) 967-9678	ckarunat@gmail.com
Life Member Forum	Larry Lewis, P.E.	Retired - City of Los Angeles	(562) 297-2088	ml3lewis@gmail.com
Region 9 Governor	Yazdan Emrani, P.E.	City of Glendale	(818) 548-3950	yazemrani@gmail.com

NEWSLETTER INFORMATION

Publisher

ASCE LA Section
Gayle Stewart
1405 Warner Ave., Suite B
Tustin, CA 92780
Phone (714) 258-8306
Fax (714) 784-7806
E-mail: gstewart@gsecorp.org

Editor

Dr. Cris B. Liban, P.E.
LACMTA
One Gateway Plaza
Mail Stop 99-16-9
Los Angeles, CA 90012
Phone (213) 922-2471
FAX (213) 922-6875
E-mail: cliban@alumni.ucla.edu
Typesetting, Layout & Printing: Apollo Printing & Graphics



Please send all copy to the Editor by
the first of the month preceding publication.

Identification Statement

ASCE Newsletter, (ISSN 0273-6233)
is published monthly by ASCE,
Los Angeles Section, 1405 Warner Ave.
Tustin, California 92780. Subscription price
included in Section dues of \$55.

Circulation

Circulated monthly (except for a joint
July/August issue) to the 5,000 subscribing
members of the Los Angeles Section, ASCE.

NEW Advertising Rates

EMPLOYMENT ADS	DISPLAY ADS
\$100/column inch	1/8 page \$200
	1/4 page \$300
	1/2 page \$465
	1 page \$740

PROFESSIONAL DIRECTORY

\$450 per business card for a full year
(Additional fees may be applied for typesetting.
Please call for information.)

POSITION WANTED ADS

No cost to L.A. Section members.

For more advertising and billing information,
please contact Gayle Stewart at (714) 258-8306
or gstewart@associationplanet.com

National ASCE (800) 548-2723 (ASCE)
Access National ASCE at: www.asce.org
L.A. Section web site at: www.ascelasection.org