

# Los Angeles Section

*Monthly: Est. 1913*

ORANGE / SAN\_BERNARDINO/RIVERSIDE / SAN\_LUIS\_OBISPO / SANTA\_BARBARA/VENTURA / DESERT /  
SOUTHERN SAN\_JOAQUIN / METROPOLITAN LOS ANGELES

## PRESIDENT'S MESSAGE

Kathereen Shinkai, P.E., M.ASCE  
Los Angeles Section President

VOL. LVII NO. 2

<b>In This Issue</b>	<i>page</i>
PRESIDENT'S MESSAGE .....	1,3
NEW FACES .....	2
LEGISLATIVE UPDATE .....	4-5
AD .....	6
LICENSE TO ENGINEER .....	7
AD .....	8
CA INFRASTRUCTURE .....	9
PROFESSIONAL DIRECTORY .....	10-11



## Celebrate Civil Engineering

I hope everyone has plans to celebrate Nationals Engineers Week. This year, it is from February 19th to the 25th. It is a week dedicated annually to us engineers and celebrates our profession. There are not many professions that take pride in their work in this specific way. My fellow coworkers, some who are architects as you may know were really surprised and perhaps a little envious to learn of this annual custom. They were very intrigued and have asked me many questions. In fact, some felt that there should be a week dedicated for various professional occupations and wondered why they don't have this.

EWeek was founded in 1951 by the National Society of Professional Engineers (NSPE) and celebrated in conjunction with President George Washington's Birthday, who was considered the Nation's first engineer, notably for his survey work. EWeek is dedicated to raising public awareness of the contributions that engineers make which improve quality of life and motivate younger generations to pursue engineering careers. Among parents, teachers and students it promotes the importance of a technical education with a high level of math, science, and technology literacy. Each year, EWeek efforts reach thousands of schools, businesses, and communities across the United States. Engineering communities are all working together to prepare the next generation by removing the social, education and the economic barriers that may deter a student from going into the engineering field.

The Younger Member Forum (YMF) in the Metropolitan Los Angeles, Orange County, and San Bernardino/Riverside Branches is celebrating EWeek by hosting the Annual Popsicle Stick Bridge Competition on Saturday, February 25th at the ARTIC Station in Anaheim. The Annual Popsicle Stick Bridge Competition (PSBC), is now in its 23rd annual year. The event brings together hundreds of local high school students to participate in a full-day competition to celebrate the engineering profession and highlight their achievements. This competition is a great opportunity to emphasize the benefits of pursuing higher education and careers in science, technology, engineering, and mathematics while promoting the engineering profession in our community.

For those of you who may be curious, prior to the event day, participating high school teams will prepare technical reports, display boards, presentations, and build their Popsicle stick bridges. The rules and specifications for the bridge design change each year so it is critical that the teams read through and follow all instructions that are on the website that can also be downloaded. On the day of the event these students along with their bridges will be put to the test! Volunteers from the civil engineering profession and local college campuses will serve as judges testing the bridges, scoring technical papers, display boards, and presentations, hosting an impromptu competition, and giving tours. The event was designed to increase awareness of the civil engineering profession among teenage students and help introduce them to the challenges and rewards that

**DISCOVER**  
**ENGINEERS WEEK**  
FEBRUARY 19-25, 2017



*continued on page 3*

# 2017 Class of ASCE New Faces of Civil Engineering Joins Club of Achievers

by Ben Walpole (adapted from [www.asce.org](http://www.asce.org))



Annually since 2003, the ASCE New Faces of Civil Engineering – Professional program has selected a group of civil engineers under 30 already accomplishing great things. These civil engineers don't excel in merely one aspect of their job or one area of life. They are the best and brightest in virtually everything they do. A look at the New Faces of past years reveals what comes across like an exclusive "Who's Who" of ASCE and civil engineering.

For instance, when ASCE's IMAX film *Dream Big: Engineering Our World* premieres Feb. 17, audiences will be cheering the stories and achievements of two New Faces alumni – Avery Bang (class of 2011) and Menzer Pehlivan (class of 2016).

Other past New Faces are in leadership positions across ASCE and the civil engineering profession.

What can we expect from this year's group?

Check back in a couple of years on that. In the meantime, get to know each and see what they've already achieved (at [www.asce.org](http://www.asce.org)) that points to promising futures in the profession.

## ARTICLE



The Industry Leaders Council engages senior leaders from industry, academia, government, and non-governmental organizations to identify tactical actions for ASCE and the civil engineering profession.

Membership on the ILC is by invitation only. Council members commit to a two (2) year term of service. Potential candidates are nominated by their peers and those candidates selected to join the ILC receive an invitation from the ILC Chair and ASCE Executive Director.

Interested in learning more about the ILC? The ILC is always looking for dedicated, active, and dynamic leaders to join them in their work for the industry. Please contact Carol Vargas ([cvargas@asce.org](mailto:cvargas@asce.org)), Director of Industry Relations for information.



[www.ascelasection.org](http://www.ascelasection.org)



- Jonathan Brower, P.E., M.ASCE, project engineer, L.A. Fuess Partners, Dallas, TX
- Muhammad Elgammal, P.E., M.ASCE, associate civil engineer, The Port Authority of New York and New Jersey, New York City, NY
- James Kaklamanos, Ph.D., EIT, A.M.ASCE, assistant professor of civil engineering, Merrimack College, North Andover, MA
- Natalie Mills, EI, A.M.ASCE, systems planning environmental engineer, Southern Company, Birmingham, AL
- Erica Mullen, P.E., M.ASCE, project manager, Maser Consulting, Mount Arlington, NJ
- Don Nguyen, P.E., ENV SP, M.ASCE, junior bridge engineer, COWI, Seattle, WA
- Chad Norvell, P.E., M.ASCE, project engineer, Nishkian Dean, Portland, OR
- Sabrina Rivera, P.E., M.ASCE, water resources engineer, ARCADIS, Los Angeles, CA
- Marilisa Stigliano, A.M.ASCE, project controls manager, AECOM, New York City, NY
- Zheng Yang, Ph.D., A.M.ASCE, postdoctoral research fellow, Stanford University, Stanford, CA



civil engineers encounter in their profession lives. The Popsicle Stick Bridge Competition is a very fun event to watch and the resulting structures are truly amazing. If you have time, it's definitely worth either volunteering or at least checking out the event.

I also had the pleasure to attend the ASCE Region 8 and 9 Multi-Region Leadership Conference this past weekend. This conference is a two day event in which we have the Workshop for Section and Branch Leaders (WSBL), Western Region Younger Member Council (WRYMC), and the Workshop for Student Chapter Leaders (WSCL) all meet together and get a chance to network with each other. Some sessions are done together and other sessions are done separately depending on what conference you attend. It is always a great venue to meet new people and interact with some of the future engineers that are so excited to take on the civil engineering world.

I would like to give a special thank you to Jane Horvath and George Huang who were the WRYMC 2017 Co-chairs this year. Los Angeles was the hosting Section for the conference and Jane and George along with their full committee did a fantastic job at organizing this event. The YMF also took charge in organizing a LA Section dinner on Friday night at LA City Hall and we had over 80 people attend this venue. The views were spectacular and the food was fantastic. To end the conference, they also organized a Dream Big IMAX Movie Screening at the California Science Center and also did their WRYMC Awards Gala at the Endeavor Space Shuttle. All in all, this conference was a great event and if you are looking to be a part of the leadership in ASCE, I would totally recommend getting involved so you can attend this conference.

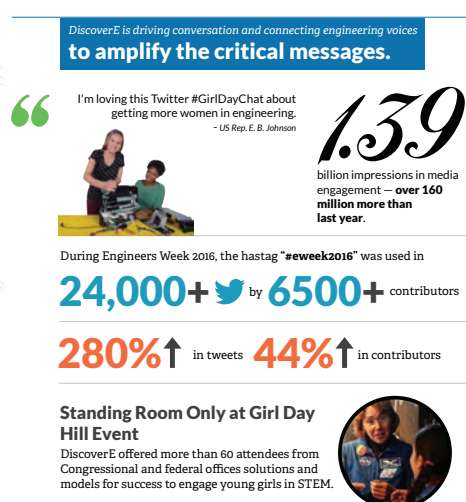
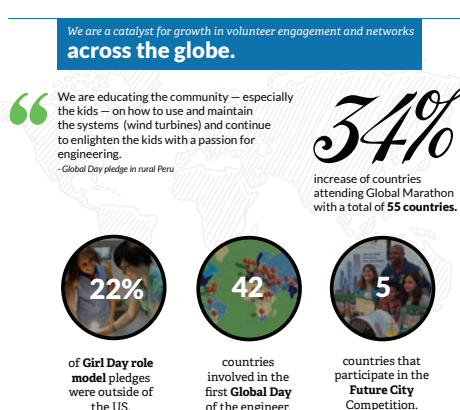
All the branches for the LA Section are doing some activity for EWeek. If you are interested in joining in on the fun, please ask one of your Branch officers and I am sure we can find the perfect activity just for you.



Region 8 & 9 Multi-Region Leadership Conference Attendees



WRYMC Awards Gala at the Endeavor at the California Science Center



# State Investments and Legislative Update

by Richard Markuson, CA Region 9 Legislative Advocate



The Legislature convened its 2017-2018 session on December 5, 2016. The special transportation session called by Brown two years ago expired at the end of November without any measure being approved.

Voters in November picked nine new State Senators and 22 new State Assembly members. Additionally, Democrats in both Houses reached the rare two-thirds super-majority representation with 55 Democratic members in the Assembly and 27 in the Senate.

Following the end of the 2015-16 Special Session on Transportation & Infrastructure that concluded without enacting a transportation funding and reform package, legislative leaders and the Governor committed to transportation stakeholders that they would make it a priority to address California's chronic road and highway repair backlog early in the upcoming session.

The chair persons of each House's transportation policy committee – Senator Jim Beall and Assembly Member Jim Frazier – separately introduced transportation funding proposals (SB 1 and AB 1 respectively) designed to repair and maintain the state highways and local roads, improve trade corridors, and support public transit and active transportation.

Both \$6 billion/year proposals, like the proposals that preceded them in the 2015-2016 Special Session, include a combination of new revenues, additional investments of Cap and Trade auction proceeds, accelerated loan repayments, Caltrans efficiencies and streamlined project delivery, accountability measures, and constitutional protections.

## Other new Legislation

**AB 28** (Frazier) would reinstate the states consent to the jurisdiction of the federal courts about the compliance, discharge, or enforcement of the responsibilities it assumed as a participant in the US DOT surface transportation project delivery pilot program.

**AB 65** (Patterson) would exclude from payment to the Transportation Debt Service Fund the debt service for the Safe, Reliable High-Speed Passenger Train Bond Act for the 21st Century (Proposition 1A of 2008).

**AB 66** (Patterson) would require the business plan of the High-Speed Rail Authority to identify projected financing costs for each segment or combination of segments of the high-speed rail system, if financing is proposed by the authority.

**SB 3** (Beall) Would enact the Affordable Housing Bond Act of 2018, which, if adopted, would authorize the issuance of bonds

in the amount of \$3,000,000,000 pursuant to the State General Obligation Bond Law. Proceeds from the sale of these bonds would be used to finance various existing housing programs, as well as infill infrastructure financing and affordable housing matching grant programs.

**SB 4** (Mendoza) Would, subject to voter approval at the June 5, 2018, statewide primary election, enact the Goods Movement and Clean Trucks Bond Act to authorize \$600,000,000 of state general obligation bonds to be used for a variety of purposes.

**SB 5** (De León) Would enact the California Drought, Water, Parks, Climate, Coastal Protection, and Outdoor Access for All Act of 2018, which, if approved by the voters, would authorize the issuance of bonds in an amount of \$3,000,000,000 pursuant to the State General Obligation Bond Law to finance a drought, water, parks, climate, coastal protection, and outdoor access for all program.

## Governor's Appointments

To the California Public Utilities Commission **Martha Guzman Aceves**, of Sacramento, who has been a deputy legislative affairs secretary in the Office of the Governor since 2011, focusing on natural resources, environmental protection, energy and food and agriculture.

To the California Water Commission **Catherine Keig** of Pasadena. Keig was interim exposition park manager at the California Science Center in 2014 and director of Southern California activities in the Office of the California State Senate President pro Tempore from 1992 to 2011.

Brown made several Regional Water Quality Control Board appointments:

Colorado River Basin Regional Water Quality Control Board **Lars Seifert** of Imperial. Seifert has been an environmental health services manager at the Imperial County Public Health Department since 2008, where he was an environmental health specialist from 2006 to 2008. **Thomas Davis** of Rancho Mirage, has been reappointed, he has served since 2007. Davis has served as chief planning and development officer for the Agua Caliente Band of Cahuilla Indians since 1997. He was a senior associate at David Evans and Associates Inc. from 1995 to 1997 and held several positions at Tierra Planning and Design from 1983 to 1995, including principal, co-owner and president.

Central Valley Regional Water Quality Control Board **Raji Brar** of Bakersfield. Brar has been owner and operator at Countryside Market and Restaurants since 2003. **Daniel Marcum** of Fall River Mills. Marcum has been a farm advisor emeritus at the University of California Cooperative Extension since 2013, where he was a farm advisor from 1976 to 2013.

Central Coast Regional Water Quality Control Board **Monica**

**Samaniego Hunter** of Los Osos, (reappointed, she has served since 2005). Hunter has been director of research at PAST Foundation since 2007. She was central coast watersheds program manager at the Planning and Conservation League Foundation from 2004 to 2012, an instructor at the Napa Valley College Social Sciences Department in 2003 and a research assistant at the California Sea Grant Marine Advisory Program from 2000 to 2003.

Lahontan Regional Water Quality Control Board **Robert Keith Dyas** of Rosamond, has been reappointed to the, where he has served since 2004. Dyas has been an engineer at Reserve Systems Inc. since 2013.

Los Angeles Regional Water Quality Control Board **James Famiglietti** of Sierra Madre. Famiglietti has been senior water scientist at the NASA Jet Propulsion Laboratory for the California Institute of Technology since 2014. Famiglietti was a professor at the University of California, Irvine School of Physical Sciences from 2001 to 2016 and at the University of Texas at Austin Department of Geological Sciences from 1994 to 2001. Cynthia Guzmán of Los Angeles. Guzmán has been a senior associate at Estolano, LeSar, Perez Advisors since 2015, where she has held several positions since 2012, including associate and research analyst.

North Coast Regional Water Quality Control Board **Hector Bedolla** of Healdsburg. Bedolla has been vineyard manager at North Pacific Vineyard Management since 2016. He was a crop advisor and agronomist at Crop Production Services from 2013 to 2016 and vineyard and ranch manager at Stuhlmuller Vineyards from 2011 to 2013. **Geoffrey Hales** of Eureka, has been reappointed, where he has served since 2006. Hales has been a geologist at McBain Associates since 2001. He was a geologist for Kleinfelder Inc. from 1999 to 2001, at Busch Geotechnical Consultants from 1995 to 1999 and at the U.S. Geological Survey in 1995.

Santa Ana Regional Water Quality Control Board **Lana Ong Peterson** of Orange. Peterson has been senior public affairs representative at Kaiser Permanente Downey Medical Center since 2012, where she was senior communications specialist from 2010 to 2012. **Daniel Selmi** of Newport Beach. Selmi has been a professor of law at Loyola Law School since 1983. He served as a deputy attorney general at the California Department of Justice, Office of the Attorney General from 1976 to 1983 and as a law clerk for the Honorable Manuel L. Real at the U.S. District Court, Central District of California from 1975 to 1976. **William Von Blasingame** of Irvine, has been reappointed, where he has served since 2013. Von Blasingame has been a member of the finance committee of the OneOC Board of Directors since 2011. He was senior vice president and general manager of Caribbean Operations at Mirant Energy Company from 2005 to 2007 and held several positions at Edison Mission Energy from 1986 to 2005, including vice president and chief financial officer of the Asia Pacific Region.

San Francisco Regional Water Quality Control Board **Jayne Battey** of Half Moon Bay. Battey has been facilitator for the Women in

Business Program at the Stanford Graduate School of Business since 2013 and owner at Miramar Farms since 2012. She was director of land and environmental management at the Pacific Gas and Electric Company from 2009 to 2012, where she was a land planner from 1983 to 1988.

### Recent Reports

The National Drought Resilience Partnership released Report to the Council on Climate Preparedness and Resilience. "Since 2012, significant portions of the country have experienced extreme to exceptional drought conditions, challenging the viability of agricultural production, impacting drinking water supplies, jeopardizing the integrity of critical infrastructure, increasing energy costs, harming ecosystems, and causing extensive economic and health impacts. On March 21, 2016, President Obama signed a Presidential Memorandum directing Federal agencies to build national capabilities for long-term drought resilience. The President tasked the National Drought Resilience Partnership (NDRP) to work collaboratively to deliver on a Federal Action Plan including six goals and 27 associated actions to promote drought resilience nationwide.... This report highlights accomplishments against the President's Action Plan and provides an overview of some of the Administration's work on drought response since 2009."

The U.S. Geological Survey released Cyanobacterial Harmful Algal Blooms and U.S. Geological Survey Science Capabilities. "Cyanobacterial harmful algal blooms (cyanoHABs) are increasingly a global concern. CyanoHABs can threaten human and aquatic ecosystem health; they can cause major economic damage. The toxins produced by some species of cyanobacteria (called cyanotoxins) cause acute and chronic illnesses in humans.... Economic damages related to cyanoHABs include the loss of recreational revenue, decreased property values, and increased drinking-water treatment costs. Nationwide, toxic cyanobacterial harmful algal blooms have been implicated in human and animal illness and death in at least 43 states. In August 2016, at least 19 states had public health advisories because of cyanoHABs."







Cordially Invites You to the  
**LIFE MEMBER BRUNCH**  
March 4, 2017

In honor of those members who have advanced to  
Life Member status in the society and in recognition of their career achievements.

Keynote Speaker:  
ASCE Society President-Elect  
Kristina Swallow, P.E., ENV SP, F.ASCE

Members & Guests: \$35.00 per person

Students: \$25.00 (\$20 refunded at event)

Full Table Sponsor: \$350.00

(4 seats for Sponsor & 6 for Honored Life Members/Students)

Half Table Sponsor - \$175.00

(2 seats for Sponsor & 3 for Honored Life Members/Students)

Monterey Hill Steakhouse

3700 W. Ramona Blvd.

Monterey Park, CA 91754

Reception: 11:00 am    Brunch: 11:30 am    Program: 12:30 pm - 2:00 pm

Lunch: Chicken Chardonnay, Vegetarian available

Reservation must be received by Friday, February 24, 2017.

-----RETURN COUPON-----

Return coupon and check to:  
ASCE Los Angeles Section, 1405 Warner Ave., Ste. B, Tustin, CA 92780

Name (for name tag): \_\_\_\_\_

Firm: \_\_\_\_\_ Phone: (    ) \_\_\_\_\_

Address: \_\_\_\_\_

City: \_\_\_\_\_ State: \_\_\_\_\_ Zip: \_\_\_\_\_

Guest Name(s) (for name tag): \_\_\_\_\_

Check is enclosed for \$ \_\_\_\_\_ for \_\_\_\_\_ guest(s)/member(s)/table.

# of chicken \_\_\_\_\_ # of vegetarian \_\_\_\_\_

Register online at [www.ascelasection.org](http://www.ascelasection.org).

# A License to Engineer

by Mark Woodson (adapted from [www.asce.org](http://www.asce.org))



Recently a few states have considered doing away with professional licensure.

Those pushing the concept that licensure is an unnecessary barrier to employment fail to recognize the crucial role professional licensure plays in protecting the public's health, safety, and welfare. While it is true that licensure should not be used as a tool for frivolous or self-serving purposes, professional licensure is crucial to the work we do as civil engineers, and ASCE

is committed to protecting professional licensure.

In our profession, licensure was first seen in the United States in 1907, and a hundred years later, never has the need for licensure been more evident. Today's practice of civil engineering requires a mastery of math, physics, and science; an understanding of an ever-increasing body of technical knowledge; and an ability to apply that knowledge in solving unique and complex problems. More than that, it requires a willingness to meet demanding professional and ethical standards, recognizing that the lives of people who live and work in today's built environment are dependent on engineers' knowledge and expertise.

Licensure ensures that we are entrusted with the responsibility to build our nation's bridges, clean our nation's drinking water, and shore up our nation's infrastructure against natural and manmade disasters once we first demonstrate competence through education, examination, and experience. Professional licensure for us and similar professionals is not a "needless barrier to opportunity" but a bulwark against the dangers of placing life-critical decisions in the hands of individuals who are ill-equipped to serve that role.

It is essential for those who beat the drum of deregulation to understand the clear danger of overreaching into professions with a profound impact on the public's safety and welfare. In the zeal to reduce market barriers for select occupations, we as civil engineers must still guard against bad policies that put all of us at risk.



## Bi-Monthly Board Meetings



Day:  
First Thursday  
of every other month

Time:  
6:00 pm

Location:  
OCTA  
550 S. Main St.  
Santa Ana, 92868

Everyone is welcome

# DREAM BIG



#eweeek2017

DiscoverE programs are made possible by the Leadership Council: Bechtel • Bentley Systems, Inc. • The Boeing Company • Exxonmobil Corporation  
Lockheed Martin Corporation • NCEES (National Council of Examiners for Engineering and Surveying) • Northrop Grumman Foundation  
S. D. Bechtel, Jr. Foundation/Stephen Bechtel Fund • Shell Oil Company •

2017 DiscoverE Co-Chairs:  
DiscoverE Leadership Council  
American Society of Civil Engineers

DiscoverE / 1420 King Street / Alexandria, Virginia 22314 [www.DiscoverE.org](http://www.DiscoverE.org)

DiscoverE Leadership Council

**ASCE**  
AMERICAN SOCIETY OF CIVIL ENGINEERS

Printed on recycled paper.



# 2017 California Infrastructure Symposium & Awards Dinner Preview

*by Matt Kennedy, P.E., T.E., ENV SP, M.ASCE, Region 9 Governor, and Awards Committee Chair*



The 2017 California Infrastructure Symposium and Awards Dinner will be held at the California Science Center in Los Angeles on Friday March 31, 2017. The event is a partnership between the Los Angeles Section and ASCE Region 9. The Symposium will be an all-day event that is typically attended by engineers, educators, elected officials, professionals and the general public. The Symposium will be primarily comprised of two infrastructure tracks with the

following topics:

## Transportation Track

- Rail and Transit – Bringing High Speed Rail to Southern California, Los Angeles Metro and Metrolink
- Sustainable Ports – Overview of Southern California's Ports and their Sustainable Development Programs
- Transportation Funding – Sales Tax Measures and Perspectives from Caltrans, the CTC, the State Assembly and Senate
- Hot Topics in Transportation – Self Driving Cars, Los Angeles Transportation Challenges, and Transportation and the NFL LA Rams Stadium

## Water Track

- Strengthening Local Drought Resilience – Urban Water Conservation, Statewide Water Use Efficiency Guidelines, and Los Angeles Water Challenges
- Indirect and Direct Potable Water Use – Metropolitan Water District's Long-Term Vision, Indirect and Direct reuse in San Diego and Large Scale Indirect Reuse in Orange County
- Safe and Reliable Water Supply – Water Supplies for Disadvantaged Communities and Small Scale Assistance Programs
- Innovative Approaches for Sustainable Water Supply Infrastructure in the 22nd Century

Speakers from many agencies across California will be involved, including the California High Speed Rail Authority, Metrolink, Port of Los Angeles, City of Los Angeles, State Regional Water Quality Control Board, Google, and the State Legislature. I hope that many of you reading this will save the date and plan to attend this event.

The Symposium will be immediately followed by a networking reception and a very special IMAX theater showing of the new ASCE movie "Dream Big: Engineering Wonders of the World".

The Annual Region 9 Awards Dinner Banquet and Ceremony will be held in the Samuel Oschin Pavilion in Los Angeles, home of the space shuttle Endeavour! Outstanding projects and individuals in Region 9 will be presented with awards in this amazing venue. Several past Region 9 Project Award nominees have gone on to be considered for,

and win, the ASCE Outstanding Civil Engineering Achievement (OCEA) award at the National level OPAL awards ceremony. For the third year in a row, one of the five projects being considered at OCEA is from Region 9: The Emergency & Carryover Storage Project in San Diego. Well done Region 9 and San Diego Section! And good luck to all the nominees on March 16, 2017 when the 2017 OCEA Award winner will be selected in Arlington, Virginia.

Each year, the many members and individuals who form the foundation of the ASCE Sections, Branches, Institutes, Younger Member and Student chapter groups in Region 9, take the time to recognize the outstanding projects and the selfless efforts of their peers, who contribute to the growth and evolution of the civil engineering profession, and the improvement of the infrastructure we all depend upon. Each group's annual awards program nominates and recognizes praiseworthy individuals and projects within their geographic areas. Each Section's award winners (San Francisco, Sacramento, San Diego and Los Angeles) are then nominated up to Region 9, in October each year. Region 9 then recognizes about 21 outstanding projects and 15 exceptional individuals from across the State of California the following March, during the annual Awards Dinner Ceremony following the California Infrastructure Symposium.

Last year, which was my first year as the Region 9 Awards Committee Chair, I described how very fortunate I have been to be involved in the recognition of so many outstanding individuals and projects at the many levels. It is a heart-warming experience, and one the recipients never forget. Now in my second year as the Awards Committee Chair, and first year as a Region 9 Governor, I am excited once more to continue the mission of raising awareness of our nation's infrastructure issues, and recognizing individual member efforts through the Region 9 Awards Program. An important milestone achieved in 2016 was the alignment of the Sections' and Region's awards programs, and for the first time in 2017 all award nominations will be made through a new online submission system established for each Section. I am very proud of the tremendous progress the Sections and Region 9 have made in improving and modernizing the awards programs; they have become a shining example to the other ASCE sections and regions. This year, Region 9 received 115 noteworthy nominations for projects and individuals from civil engineering professionals, agencies and companies! Your 2017 nominations are welcome and encouraged! You will find a web link to access each Section's online nomination form on their respective section websites as their awards programs roll out in 2017.

For more information and to register for the 2017 California Infrastructure Symposium and Awards Dinner Banquet and Ceremony, please bookmark the California Infrastructure Symposium website at <http://www.cais17.org>, the Los Angeles Section website at [www.ascelasection.org](http://www.ascelasection.org), or the NEW Region 9 web site at <http://regions.asce.org/region9/>. We look forward to seeing all of you in Los Angeles on March 31st!

**AES Advanced Earth Sciences, Inc.**  
Geotechnical and Environmental Consultants

Kris Khilnani, PE, GE - President  
Dr. Sujl Somasundaram, PE, GE - Principal Engineer  
Grant Miller, PG, CEG - Principal Geologist

(949) 379-2450  
9307 Research Drive Irvine, CA 92618 FAX: (949) 379-2470  
Website: www.aessciences.com

**ADVANCED ENGINEERING SOFTWARE**

Software written & supported by the  
**AUTHORS OF THE COUNTY MANUALS**

advancedengineeringsoftware.com  
SD: (760) 510-5940, OC: (657) 229-0090

**CREATE. ENHANCE. SUSTAIN.**

**AECOM**  
www.aecom.com

With offices throughout Southern California, we deliver expert solutions for our clients.  
515 S. Flower Street, 4th Floor, Los Angeles, CA 90071  
P + 1.213.330.7200

**amec foster wheeler**

- Geotechnical Engineering
- Construction Materials Inspection/Testing
- Construction Management
- Environmental Science and Engineering
- Earthquake-Related Services
- Air Toxics and Health Risk Assessment

James J. Weaver PE, GE  
Tel (323) 889-5300  
Fax (323) 721-6700

6001 Rickenbacker Rd.  
Commerce, California  
USA 90040-3031  
www.amecfw.com

**Cannon**  
ENGINEERING-PLANNING-CONSTRUCTION

J. Eric Porkert, PE  
General Manager and Senior Principal Engineer

Public Infrastructure; Land Development;  
Education; Energy; Survey & Mapping;  
Aerospace/Defense

310.664.1166  
www.CannonCorp.us

For Over 15 Years  
CASC has Helped Agencies get Through Plan Checking Log Jams

Drainage Reports SWPPP/WQMP Maps/Log Jams  
Streets Sewer Water Storm Drain

**CASC**  
Engineering and Consulting  
www.cascinc.com

**CHJ Consultants**  
Providing Excellent Service for 50 Years

Geotechnical Engineering  
Environmental Consulting  
Construction Inspection  
Materials Testing

www.CHJConsultants.com (909) 824-7311  
Victorville | Colton | Palm Desert

**CWE**

Vik Bapna  
PE, CPSWQ, OSD/P  
Principal

Certified 8(a), DBE, MBE, SBE

1561 E. Orangethorpe Avenue Suite 240  
Fullerton, CA 92831  
www.cwecorp.com

Office (714) 526-7500 x212  
Mobile (714) 262-0180  
Fax (714) 526-7004  
vbapna@cwecorp.com

ENGINEERING WATER ENVIRONMENTAL

**DAVID EVANS AND ASSOCIATES, INC.**

TRANSPORTATION  
WATER RESOURCES  
LAND DEVELOPMENT  
ENERGY  
SURVEYING GEOMATICS  
MARINE SERVICES

CALIFORNIA LOCATIONS  
Los Angeles | Ontario | San Diego  
Santa Clarita | Temecula | Tustin | Victorville

800.721.1916  
www.deainc.com

**DAVID R. GRAY, INC.**  
Surveys-Subdivisions-Mapping

David R. Gray  
CEO / Principal Land Surveyor

621 Via Alondra, Suite 609  
Camarillo, CA 93012 (805) 987-3945  
Fax: (805) 987-1655  
davidg@drgrayinc.com

**DIAZ-YOURMAN & ASSOCIATES**

Christopher M. Diaz, PE, GE  
Principal

Geotechnical Services

1616 East 17th Street Santa Ana CA 92705-8509  
Tel. (714) 245-2920 • Fax (714) 245-2950 • Cell (714) 412-2093  
chris@diazyourman.com www.diazyourman.com

**Earth Mechanics, Inc.**  
Geotechnical & Earthquake Engineering

Foundation Design  
Seismic Evaluation  
Soil-Structure Interaction  
Field Investigation and Laboratory Testing  
Grading and Foundation Inspections

www.earthmech.com  
San Marcos Fountain Valley Hayward  
760.736.8222 714.751.3826 510.562.8893

**GENTERRA Consultants, Inc.**

Joseph J. Kulikowski, P.E., G.E.  
President and Senior Principal Engineer  
15375 Barranca Parkway, Building L  
Irvine, California 92618  
Tel: 949.753.8766 Fax: 949.753.8887  
joekul@genterra.com  
www.genterra.com

CIVIL ENGINEERING • GEOTECHNICAL ENGINEERING • DAMS AND LEVEES  
OFFICES IN NO. & SO. CALIFORNIA, COLORADO AND PENNSYLVANIA  
SERVICES PROVIDED NATIONWIDE

**GeoPentech**  
Geotechnical & Geoscience Consultants

- Geotechnical Engineering
- Geo-Earthquake Engineering
- Seismic Hazards Evaluation
- Soil Dynamics/Vibrations
- Engineering Geology
- Hydrogeology
- Seismic Geology
- Forensic Studies

Sarkis Tatusian, Principal Geotechnical Engineer  
5251 California Avenue, Suite 210  
Irvine, California 92617  
Phone: (714) 796-9100; FAX: (714) 796-9191  
Web Site: www.geopentech.com

**GPI**  
GEOTECHNICAL PROFESSIONALS, INC.

James E. Harris, G.E.  
Byron Konstantinidis, G.E.  
Paul R. Schede, G.E.

5736 Corporate Ave.  
Cypress, California 90630  
(714) 220-2211 Fax (714) 220-2122  
www.gpi-ca.com

**GREGG**

Phone: (562) 427-6899  
Fax: (562) 427-3314  
Email: info@greggdrilling.com  
Web Site: www.greggdrilling.com

**GREGG DRILLING & TESTING, INC.**

- ENVIRONMENTAL and GEOTECHNICAL DRILLING
- WELL INSTALLATION
- CONE PENETRATION TESTING

2726 WALNUT AVE. • SIGNAL HILL, CA 90755

**GROUP DELTA CONSULTANTS**

GEOTECHNICAL ENGINEERING  
MATERIALS TESTING & INSPECTION  
Serving Southern California since 1986

Michael Reader, G.E.  
Principal Engineer  
Tom Swank, G.E.  
Principal Engineer

Group Delta Consultants, Inc.  
Los Angeles County: (310) 320-5100  
Orange County: (949) 809-1020  
San Diego County: (858) 524-1500  
www.GroupDelta.com

**gsi Geotechnical Stabilization, Inc.**

Amer R. Al-Alusi, P.E.  
President  
alusi@gsigrout.com

Chemical Grouting Compaction Grouting  
PressGrout Piles Helical Piers

1566 Sterling Court • Escondido, CA 92029-1208  
Phone (760) 489-6696 • Fax (760) 489-6697

**Hall & Foreman, Inc.**

IS NOW **DAVID EVANS AND ASSOCIATES, INC.**

800.721.1916  
www.deainc.com  
www.hfinc.com

CALIFORNIA LOCATIONS: Los Angeles • Ontario • Sacramento • San Diego  
Santa Barbara • Santa Clarita • Temecula • Tustin • Victorville

**HDR**

ONE COMPANY | Many Solutions™

SERVICES:  
Water/Wastewater • Transportation  
Environmental • Construction Management

801 So. Grand Avenue, Suite 500, Los Angeles, CA 90017  
213.239.5800 www.hdrinc.com

**Kiewit**

KIEWIT INFRASTRUCTURE WEST CO.  
10704 Shoemaker Ave., Santa Fe Springs, CA 90670  
(562) 946-1816  
www.kiewit.com

**K&S KRIEGER & STEWART Engineering Consultants**

Water • Wastewater • Recycled Water • Storm Water  
Planning • CEQA/NEPA • Surveying  
Design • Construction Management • Inspection

Engineering the Details, Because Details Matter  
Riverside, CA 92501 • 951-684-6900 office  
www.kriegestewart.com

**KEHOE TESTING & ENGINEERING**

- Cone Penetration Testing (CPT)
- Direct Push Soil, Water & Vapor Sampling
- Truck Mounted, Track & Ltd. Access Rigs

Soil Testing & Sampling Services  
for Geotechnical & Environmental Consultants

5415 Industrial Drive  
Huntington Beach, CA 92649-1518  
(714) 901-7270 (714) 901-7289 fax  
STEVE KEHOE, P.E.  
PRESIDENT

**LaBelle • Marvin**  
PAVEMENT ANALYSIS, DESIGN, TESTING & INSPECTION SINCE 1969

Steven R. Marvin, P.E.  
President

2700 S. Grand Ave.  
Santa Ana, CA 92705  
Ph (714) 546-3468  
Fax (714) 546-5841  
smarvin@labellemarvin.com  
www.labellemarvin.com

Geotechnical Environmental Site/Civil

**LANGAN**

www.langan.com 213.943.1310

Los Angeles Irvine Oakland Sacramento San Francisco San Jose  
CA NJ NY CT PA OH DC VA FL TX ND

**Leighton Consulting, Inc.**

866-LEIGHTON

Thomas C. Benson, Jr., PE, GE | President and CEO

Geotechnical | Environmental | Testing and Inspection

**Michael Baker INTERNATIONAL**

We Make a Difference

Planning/Urban Design • Transportation/Traffic  
Land Development • Water Resources • Structures  
Survey/Mapping • Public Works • Surface Water

801 S. Grand Avenue, Suite 250, Los Angeles, CA 90017  
Don Sepulveda, PE, (213) 797-5985

MBAKERINTL.COM

**MNS ENGINEERS INC**

SERVICES:  
Civil Engineering  
Construction Management  
Surveying

MARKETS:  
Transportation  
Water Resources  
Federal  
Government

Builton • Pasadena • Salinas • San Jose • San Luis Obispo • Santa Barbara • Westlake Village

**NMG**  
Geotechnical, inc.

Hayim Ninyo  
Ted Miyake

17991 Fitch, Irvine, CA 92614  
Phone (949) 442-2442 Fax (949) 476-8322  
E-Mail: hninyo@nmgeotechnical.com  
www.nmgeotechnical.com

**PACE**  
Advanced Water Engineering

...in partnership with nature

- Water / Wastewater
- Marmade Lakes / Streams
- Fountains / Pools
- Stormwater Management
- River Engineering
- River / Wetland Restoration

WWW.PACEWATER.COM  
HEADQUARTERS  
17520 Newhope Street, Suite 200 | Fountain Valley, California 92708  
main: 714.481.7300 fax: 714.481.7259  
ADDITIONAL LOCATIONS  
SCOTTSDALE, AZ • BEIJING, CHINA

**PARSONS**

100 W. Walnut Street  
Pasadena, California 91124  
(626) 440-3355 • Cell: (626) 710-0494  
Fax: (626) 440-6337  
satish.kamath@parsons.com

Satish Kamath, P.E., BCEE  
Vice President

www.parsons.com

**Port of LONG BEACH**  
The Green Port

4801 Airport Plaza Drive, Long Beach, CA 90815



**PSOMAS**

Civil Engineering Land Surveying  
Construction Management Environmental Consulting

Balancing the Natural and Built Environment

**Project X**  
**Corrosion Engineering**  
Ed Hernandez, PE, NACE CCT  
MBE • DBE • SDB • SBE • SBA 8(a)

**Soil / Water / Metallurgy Lab**  
**Corrosion Control Consulting**  
Phone : 213-928-7213 • info@projectscorrosion.com  
5 Day Turn-Around Lab • Forensic Engineering  
Condition Assessment • Cathodic Protection

P: (805) 543-1794 | www.rrmdesign.com

**rrmdesigngroup**

creating environments people enjoy®

Community | Civic & Public Safety | Education | Recreation | Urban  
architects | engineers | landscape architects | planners | surveyors

**Stantec**

We bring  
infrastructure  
projects to life

Design with community in mind stantec.com

Civil Engineering • Water Resources • Construction Management  
Environmental • Surveying • Program Management • Inspection

**TKE ENGINEERING INC.**

2305 Chicago Avenue - Riverside - CA - 92507  
Ph. (951) 680-0440 • Fax (951) 680-0490  
www.tkeengineering.com

www.vacconsultinginc.com

**VA CONSULTING**

Max Vahid, P.E.  
President and CEO  
maxvahid@vacconsultinginc.com  
Tel: 949.474.1400 | Fax: 949.261.8482

Engineering Services in:  
Flood Control | Drainage | Water Quality  
Potable Water | Recycled Water | Wastewater  
Transportation | Traffic | Plan Checking  
Structural | Land-Use Planning | Site Development  
Surveying | Construction Management

Offices in: Irvine • Corona • Palm Desert

**VALUED ENGINEERING, INC.**

"Engineering with values and integrity"

CIVIL ENGINEERING • LAND SURVEYING • LAND PLANNING

180 N. Benson Avenue, Suite "A"  
Upland, CA 91786  
Office: (909) 982-4601  
Cell: (909) 927-7347  
jeff@valued-eng.com  
www.valued-eng.com

Jeff D. Meiter, LS, RCE  
President

# SUSTAINABILITY COMMITTEE

## CALL FOR MEMBERS

[http://www.ascelasection.org/main/groups/sustainability\\_committee](http://www.ascelasection.org/main/groups/sustainability_committee)

Conference calls on every 2<sup>nd</sup>  
Thursday of the month

**To join our email list**  
Please contact:  
Jason Zhang, PE, ENV SP  
626-458-3138  
jzhang@dpw.lacounty.gov



### Reminder:

Copy deadline for the March 2017 issue is February 1, 2017; copy deadline for the April 2017 issue is March 1, 2017.

National ASCE (800) 548-2723 (ASCE)  
Access National ASCE at: [www.asce.org](http://www.asce.org)  
L.A. Section web site at:  
[www.ascelasection.org](http://www.ascelasection.org)

### MATERIALS SUBMISSION INFORMATION

All graphic materials submitted for use in the ASCE newsletter should have all fonts outlined, and links included; EPS or PDF files preferred. Other formats are Adobe InDesign or Adobe Illustrator (any version); additional acceptable file formats are JPEG or TIFF files (minimum 300 dpi). Images embedded in Microsoft Word documents should be sent separately, at a minimum resolution of 300 dpi at the display size desired. Collected files, including links and fonts, should be compressed and e-mailed, or sent on CD or Zip disk (provide return address). Business cards can be submitted electronically as well, or send clean, crisp, B&W laser print, unfolded. This publication's size is 8½" × 11".



# Los Angeles Section

Monthly: Est. 1913

1405 WARNER AVE.  
SUITE B  
TUSTIN, CA 92780

POSTMASTER: THIS CONTAINS TIME-SENSITIVE MATERIALS.  
PLEASE DELIVER PROMPTLY.



This newsletter is printed on  
Forest Stewardship Council  
(FSC)-certified paper using  
soy-based ink.

**Please contact ASCE Membership at  
1-800-548-ASCE for any address changes.**

## NEWSLETTER INFORMATION

### *Publisher*

ASCE LA Section  
Gayle Stewart  
1405 Warner Ave., Suite B  
Tustin, CA 92780  
Phone (714) 258-8306  
Fax (714) 258-8391  
E-mail: GStewart@associationplanet.com

### *Editor*

Dr. Cris B. Liban, P.E.  
LACMTA  
One Gateway Plaza  
Mail Stop 99-17-2  
Los Angeles, CA 90012  
Phone (213) 922-2471  
FAX (213) 922-6875  
E-mail: cliban@alumni.ucla.edu  
Typesetting, Layout & Printing: Apollo Printing & Graphics



Please send all copy to the Editor by  
the first of the month preceding publication.

### *Identification Statement*

ASCE Newsletter, (ISSN 0273-6233)  
is published monthly by ASCE,  
Los Angeles Section, 1405 Warner Ave.  
Tustin, California 92780. Subscription price  
included in Section dues of \$55.

### *Circulation*

Circulated monthly (except for a joint  
July/August issue) to the 5,000 subscribing  
members of the Los Angeles Section, ASCE.

## ***NEW Advertising Rates***

EMPLOYMENT ADS	DISPLAY ADS
\$100/column inch	1/8 page \$200
	1/4 page \$300
	1/2 page \$465
	1 page \$740

### PROFESSIONAL DIRECTORY

\$450 per business card for a full year  
(Additional fees may be applied for typesetting.  
Please call for information.)

### POSITION WANTED ADS

No cost to L.A. Section members.

For more advertising and billing information,  
please contact Gayle Stewart at (714) 258-8306  
or [gstewart@associationplanet.com](mailto:gstewart@associationplanet.com)

National ASCE (800) 548-2723 (ASCE)  
Access National ASCE at: [www.asce.org](http://www.asce.org)  
L.A. Section web site at: [www.ascelasection.org](http://www.ascelasection.org)