

Los Angeles Section

Monthly: Est. 1913

ORANGE / SAN_BERNARDINO/RIVERSIDE / SAN_LUIS_OBISPO / SANTA_BARBARA/VENTURA / DESERT /
SOUTHERN SAN_JOAQUIN / METROPOLITAN LOS ANGELES

PRESIDENT'S MESSAGE

Kathereen Shinkai, P.E., M.ASCE
Los Angeles Section President

VOL. LVII NO. 8

In This Issue *page*

PRESIDENT'S MESSAGE	1,3
CHANGES TO P.E. BOARD LAWS	2
LEGISLATIVE UPDATE	4-5
DISASTER PREPAREDNESS	5
NOMINATING COMMITTEE	6
ADS	7-8
WANT TO ENGINEER THE FUTURE?	9
OUTGOING DIRECTOR	10-11
PROFESSIONAL DIRECTORY	12-13



What a Year!

I still can't believe that it has been almost a year since I wrote my first article going over the Los Angeles Section Strategic Plans for the 2016 ~ 2017 year. It is now already September and I am finishing up my term and getting ready to hand off the baton to our current President-Elect, Jerry Burke on October 1st. Looking back at this year, the LA Section had various events which we hosted and received many compliments from other Sections and Regions. With the help and support of the Executive Board, Directors, and each of you, we had a successful year.

This month, I would like to formally thank the Executive Board for their hard work and dedication. Our President-Elect, Jerry Burke has always been enthusiastic and has brought new ideas to the table. I am assured that he will do a fantastic job as next year's President. Our Treasurer, Edwin Quinonez has been maintaining our finances and made sure that we were on budget. Our Secretary, Ziad Mazboudi who is new to the Board this past year, has been keeping meeting minutes and making sure we meet the tasks at hand. Past President, John Rogers has been a key to helping me throughout the year on miscellaneous topics and guiding me during the year. I would also like to thank all the Presidents from each of our Branches, Committee Chairs, Vice President Student Activities, Dr. Jong-Wha Bai, Vice President Technical Groups/Institutes, Kash Hadipour, Life Member Forum, Larry Lewis, Younger Member Forum, Remi Candaele, and Region 9 Governor, John Hogan. All the Branches were very active and participated in the LA Section sponsored events and had many events of their own that were successful.

How did we do on the Strategic Plans that we had set during the beginning of the year? Let us take a look.

Goal #1:

Increase membership and improve membership participation and retention.

Our Section is one of the largest in the Nation and have a lot of resources that we can share with each other. We continue to have civil engineers join the organization each year and have 8,494 members in the LA Section as of August. This year, we had many activities which helped develop leadership to strengthen the Section and to broaden our member's perspective.

Goal #2:

Promote member involvement in public policy decision making and in the finance of infrastructure at the national, state, and local levels.

This year was a big year for ASCE with the 2017 America's Infrastructure Report Card being unveiled. America's Report Card had an overall GPA of a "D+" back in 2013 and for 2017 we still have a "D+." We took this report card to the Region 9 Fly-In to Sacramento

continued on page 3



Changes to the California PE Board's Laws in 2015 that Apply to Local Governmental Agencies

by Ric Moore, PLS, Executive Officer, California PE Board (BPELSG), (Reprinted with permission from the Spring 2015 BPELSG Bulletin)



The California PE Board (BPELSG) has asked the ASCE Region 9 Board to assist in reminding public agency engineers of their responsibilities for monument preservation/perpetuation as required by law. Please contact BPELSG Executive Officer Ric Moore (Ric.Moore@dca.ca.gov) for any questions or clarification in regard to this 2015 past article.

On January 1, 2015, changes to both the Professional Land Surveyors' Act and the Professional Engineers Act that apply to governmental agencies and their employees became effective.

Section 8725.1 was added to the Professional Land Surveyors' Act (California Business and Professions Code) requiring that all licensure requirements imposed upon private sector professional land surveyors shall be imposed upon individuals performing land surveying for a governmental agency. Section 8725.1 states as follows:

It is the intent of the Legislature that the licensure requirements that are imposed upon private sector professional land surveyors and land surveying partnerships, firms, or corporations shall be imposed upon the state and any city, county, city and county, district, and special district that shall adhere to those requirements. Therefore, for the purposes of Section 8725 and this chapter, at least one person authorized to practice land surveying shall be designated the person in responsible charge of professional land surveying work practiced in any department or agency of the state, city, county, city and county, district, or special district.

This requirement has been a part of the Professional Engineers Act, in Section 6730.2, for many years. The addition of Section 8725.1 has made it clear that professional land surveying services performed for or by a governmental agency are required to be done by a person legally authorized to perform land surveying services. These sections clarify that the requirement for licensure applies to governmental agencies and their employees as well as licensees working in the private sector.

The change to the Professional Engineers Act was an addition to Section 6730.2, which has been amended to add subsection (c) concerning monument preservation. Section 6730.2(c) states as follows:

The designated person in responsible charge of professional civil engineering work of any department or agency of the state, city, county, city and county, district, or special district pursuant to this

section is responsible for compliance with subdivisions (b) and (c) of Section 8771.

The addition of Section 6730.2(c) identifies that the civil engineer in responsible charge for civil engineering work at a department or agency is responsible for compliance with the laws pertaining to the preservation of monuments that control the location of subdivisions, tracts, boundaries, roads, streets, or highways, or provide horizontal or vertical survey control, and the monuments shall be located and referenced prior to the time when construction of the project begins so monumentation is not lost and that any existing monumentation can be retained or replaced in their original position.

Based upon these new requirements, the Board for Professional Engineers, Land Surveyors, and Geologists (Board) is in the process of creating a form to be completed by governmental agencies that will identify the engineers and surveyors in responsible charge of performing the respective engineering and land surveying duties for their agency. The form, *Notice of Department or Agency Association*, will be required to be filed by all governmental agencies that perform civil, electrical, and mechanical engineering or land surveying services whether that agency is a State, city, county, or city/ county agency, or a district or special district. The form will provide the Board with a record of who, whether an agency employee or a contracted individual, is in responsible charge of engineering and surveying services for each department or agency.

ARTICLE



The Industry Leaders Council engages senior leaders from industry, academia, government, and non-governmental organizations to identify tactical actions for ASCE and the civil engineering profession.

Membership on the ILC is by invitation only. Council members commit to a two (2) year term of service. Potential candidates are nominated by their peers and those candidates selected to join the ILC receive an invitation from the ILC Chair and ASCE Executive Director.

Interested in learning more about the ILC? The ILC is always looking for dedicated, active, and dynamic leaders to join them in their work for the industry. Please contact Carol Vargas (cvargas@asce.org), Director of Industry Relations for information.



www.ascelasection.org

during the Infrastructure Week in May. The Legislative Committee for all the Branches had many members step up and get involved. We as civil engineers need to be the biggest advocate in promoting infrastructure maintenance and ensuring that our communities understand what is at stake and we definitely represented well.

Goal #3:

Develop pre-college student outreach programs throughout the Section.

The Branches have had a big push in soliciting volunteers and schools for our K-12 Outreach Program or the STEM Programs. This year was an exciting year with the "Dream Big: Engineering Wonders of the World" movie premiering on the giant-screen. I have watched the movie several times now and I still enjoy it every time. The movie will stop showing at the California Science Center, but we will continue to promote it and hopefully be able to show it at more locations.

Goal #4:

Promote the profession in our communities to enhance its stature through education of our members and the public concerning infrastructure needs and sustainable development.

Many of the Branches had numerous community outreach events throughout the year and I believe that we are better educating the public. I hope that each one of you will continue to take a few moments to communicate with your family, friends and colleagues

regarding the importance of infrastructure funding and how sustainable development will change the future.

Goal #5:

Advocate professional development through professional registration, Society and Section membership, and lifelong learning to aid our members continued growth throughout their careers.

The Section is proud to have such an active Younger Member Forum with whom we are big advocates of obtaining professional registration. We must continue our education and seek innovative approaches to old and new problems. During the times when our members take the professional engineering exam, younger members have been out there promoting ASCE. After the long day, the younger members hosted a happy hour for the test takers and shared stories. In addition, many of our members are very active in the local Career Fairs at the Universities and establish relationships with the students.

As you can see, many activities happened during the year, but we can always do more. I wanted to thank everyone who has made this Section what it is and continues to be. If you have any suggestions, please feel free to let me know. The Section would not exist without each of your membership and I wanted to just say "Thank you for your continued service and I hope we can help each other to create a stronger group!" This year has been a great year and I hope to continue my involvement in the years to come!

Bi-Monthly Board Meetings



Day:
First Thursday
of every other month

Time:
6:00 pm

Location:
OCTA
550 S. Main St.
Santa Ana, 92868

Everyone is welcome

State Investments and Legislative Update

by Richard Markuson, CA Region 9 Legislative Advocate



The Legislature finished with their work and left on their summer recess on July 21. They will return on August 21 for the final month of this first year of the Legislative session.

Before departing, the Legislature passed an extension of California's Cap and Trade legislation (sometimes referred to as Cap and Tax). Gov. Jerry Brown quickly signed the bill AB 398 (Garcia, Eduardo) that extends the center-piece statutory provisions in California's quest to solve global climate change through greenhouse gas reduction.

Brown was joined by former Governor Arnold Schwarzenegger who signed the state's original cap-and-trade bill in 2006, Senate President Pro Tempore Kevin de León, Assemblymember Garcia and dozens of local, environmental and business leaders on Treasure Island to sign the bill. The event was open to invited guests and credentialed media only.

The final bill includes tax cuts and prevents local air regulator boards from setting their own rules on emissions that go above and beyond the cap-and-trade program – a provision particularly irksome for the environmental community and local pollution authorities.

Brown observed California is “a nation-state in a globalizing world,” and called cap-and-trade “one of the key milestones in turning around this carbonized world into a decarbonized, sustainable future.”

You can read details about AB 398 here.

The Air Resources Board, coincidentally, released California Greenhouse Gas Emission Inventory Program. “The state's emissions in 2015 dropped just 0.3% from the prior year, according to data released ... by the California Air Resources Board. The board's detailed annual greenhouse gas inventories are issued more than a year after the fact. While emissions from electrical plants fell in 2015, driven down partly by the rapid growth of large solar facilities, the amount of greenhouse gases spewed by cars and planes rose. That may be due to low fuel prices and an improving economy, both of which typically entice people to drive more.” (SFGate)

Other Legislation

ASCE supported AB 1523 (Obernolte R) that will authorize the San Bernardino County Transportation Authority to use the design-build contracting process for local agencies was approved by the Legislature and sent to the Governor for his consideration.

ASCE supported AB 1671 (Caballero D) took an interesting turn. As approved in committee, it would have required the State Water

Resources Control Board (SWRCB) to update its backflow protection and cross-connection regulations. After leaving committee, it was substantially amended. Now the bill allows the state board to implement its backflow protection and cross-connection standards through the adoption of a “policy handbook” (the bill does not specify which “policy handbook”) that is not subject to the notice and hearing requirements of California's Administrative Procedures Act. Caballero also amended her AB 851 that would extend county's current authority to use construction manager at-risk construction contracts. The bill now will “prohibit a construction manager at-risk entity from being prequalified or shortlisted or awarded a contract unless that entity provides an enforceable commitment to the county that the entity and its subcontractors at every tier will use a skilled and trained workforce to perform all work on the project.” This is boilerplate language of the State Building and Construction Trades Council that exempts contracts pursuant to a Project Labor Agreement (PLA) from its requirements.

Recent Reports

Science released “Estimating Economic Damage from Climate Change in the United States.” “Unmitigated climate change will make the United States poorer and more unequal, according to a new study published in the journal Science. The poorest third of counties could sustain economic damages costing as much as 20% of their income if warming proceeds unabated. States in the South and lower Midwest, which tend to be poor and hot already, will lose the most, with economic opportunity traveling northward and westward.... The study is the first of its kind to price warming using data and evidence accumulated by the research community over decades. From this data, the team estimates that for each one degree Fahrenheit (0.55 C) increase in global temperatures, the U.S. economy loses about 0.7% of Gross Domestic Product, with each degree of warming costing more than the last.” (Phys.org, Jun. 29, 2017).

American Immigration Council released Foreign-Born STEM Workers in the United States. “Of the nation's 50 states, California ranks second in its proportion of foreign-born STEM workers—one percentage point lower than New Jersey, where 43% are immigrants.... When the health and social science occupations are added to the California STEM analysis, foreign-born workers make up a slightly smaller share of our workforce: 37%.... The study also found that the nation's foreign-born STEM workers are more highly educated than their U.S.-born co-workers.... As demand grows in these fields, so will the need for an educated workforce. The U.S. Bureau of Labor Statistics has projected that STEM occupations will increase about 13% from 2012 to 2022, compared to 11% projected for all occupations.” (San Jose Mercury News, July 14, 2017).

Brookings Institution released Modernizing Government's Approach to Transportation and Land Use Data: Challenges and Opportunities. “[T]his report catalogs emerging data sets related to transportation

and land use, and assesses the ease by which they can be integrated into how public agencies manage the built environment. It finds that there is reason for the hype; we have the ability to know more about how humans move around today than at any time in history. But, despite all the obvious opportunities, not addressing core challenges will limit public agencies' ability to put all that data to use for the collective good."

Caltrans has released its 2017 State Highway System Management Plan, outlining its five-year maintenance plan and 10-year highway operations and protection program plan, notes "about \$19 billion in SB 1 revenues will be invested repairing our state highway system in the next decade," resulting in "an additional 17,000 miles of pavement repaired; an additional 500 bridges repaired or replaced; an additional 55,000 culverts and drains repaired; and an additional 7,700 signals, signs and sensors repaired or replaced."

Southern California Water Committee has released a polling memo from Fairbank, Maslin, Maullin, Metz & Associates, reports the Governor's California WaterFix project "has support from nearly two-thirds (64 percent) of Southern California voters," says "voters

favor the infrastructure improvement project by 62% when provided an objective summary of it" and "after hearing positive messaging regarding California WaterFix, support for the project jumps to 71%."

Appointments

Governor Brown has made the following appointments:

As director of the California Department of Water Resources: **Grant Davis**, Petaluma, general manager of the Sonoma County Water Agency.

As deputy director of the State Water Project at Dept. of Water Resources: **Joel Ledesma**, Sacramento, various positions at Dept. of Water Resources since 1991, including assistant division chief of operations and maintenance.

As assistant director of public affairs at the California Department of Water Resources: **Erin Mellon**, Sacramento, communications and outreach advisor at the CA Natural Resources Agency.

Disaster Preparedness Update

by Doug Taylor, P.E., M.ASCE, Chair, ASCE Region 9 Disaster Preparedness Committee

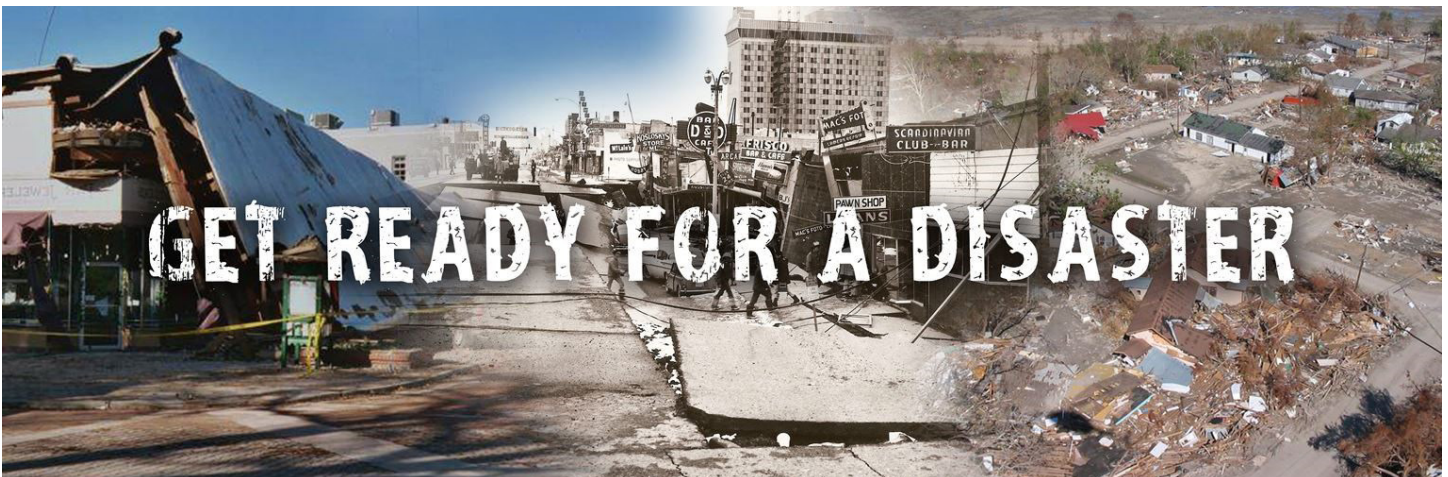


Get Ready for a Disaster!

Have you been certified as a Safety Assessment Evaluator (SAP) yet? If you haven't, then you're not ready for a disaster. When thousands of homes and businesses have been damaged or destroyed by an earthquake somewhere in California you won't be able to offer your engineering assistance. And you'll want to. So let's get you certified.

It's easy to get trained. The six-hour course is often FREE (or at a small charge for lunch and meeting room) and is provided in areas around the State periodically. The cert is good for FIVE years and then you can renew online... what could be simpler? To find a class in your area, check the training schedule at www.caloes.org and click on their Training Calendar. Look for an SAP Evaluator training class near you.

If you don't find a class in your area, send an email to me saying you're interested and I'll do my best to set one up near you if enough people are interested... dtaylor@outbackmaterials.com.



Nominating Committee has Three Candidates for Consideration

by Katherine M. Shinkai, P.E., M.ASCE, President, Los Angeles Section, 2016-2017



The Nominating Committee of the Board of Directors of the Los Angeles Section has presented for your consideration three candidates for Board positions:

For President-Elect, to serve a one year term beginning on October 1, 2017, followed by a year as President of the Section in 2018-2019, **Mr. Steven L. King, P.E.** Steven is a registered Civil Engineer in California and has over 14 years of experience in the public sector

delivering projects through environmental clearance, final design and construction. He is a Sr. Project Manager in the Highway Programs Department with Orange County Transportation Authority and is currently a manager on the I-405 design-build project. Steven holds a Bachelor of Science degree in Civil Engineering from University of Illinois and a Master of Science degree in Transportation Management from San Jose State University. He has been a member of ASCE since 2003 and served as president of the Orange County Branch during 2015-2016. Steven lives in Anaheim Hills with his wife, Sarah and newborn son, Louis.



Steven L. King



Brian Wolfe

Nominated for a two year term as Treasurer is **Mr. Brian Wolfe, P.E.** Brian has over 15 years' experience in civil engineering and land surveying for both private and public sectors of the industry. His experience in design and construction plan checking includes a variety of improvement projects such as street improvements, pavement rehabilitation, signing and striping, precise grading, water mains, demolition, water reservoir rehabilitation, and sewer mains. He has provided capital improvement design, staff augmentation and plan checking

services for several Southern California cities. His experience also includes public works construction inspection, legal descriptions for easements, topographic surveying and construction surveying. Brian is also well versed in traffic calming, bicycle facility design, traffic engineering studies including warrant analysis and temporary traffic control. Brian has conducted extensive research for reports such as an LED Street Light Conversion Study and a proposed Pavement Management Program.

Nominated for a two year term as Vice President for Student Activities is **Seema C. Shah-Fairbank, P.E.**



Seema C. Shah-Fairbank

In accordance with the By-laws of the Section, these three candidates are submitted for your consideration. Additional candidates for each office may be nominated by petition signed by a minimum of 50 voting members (ASCE members with a grade of Associate or higher whose dues are current), accompanied by a statement of acceptance from the candidate. If no such nominations by petition are received, the three candidates presented by the nominating committee shall be considered to be elected by acclamation.

Petitions are due within 30 days of the distribution of this announcement and should be submitted to:

ASCE Los Angeles Section
c/o Gayle Stewart Enterprises
1405 Warner Ave., Ste. B
Tustin, CA 92780





The Los Angeles Section

Cordially Invites You to

Dorothy Chandler Pavilion

135 North Grand Avenue, Los Angeles, CA 90012



Annual Meeting, Installation of Officers & Awards Luncheon

Saturday, October 14, 2017 at 11:00 am

Registration & Reception—11:00 am | Lunch & Program—11:30 am

Member & Guest—\$75 per person | Student—\$25

(After Oct. 6th, Member & Guest—\$85 per person | Students—\$35)

Menu Selection

Crisp Organic Chicken Breast or Lemon-Pea Ravioli (Vegetarian)

For reservations by check, mail to:

ASCE LA Section, 1405 Warner Ave., Ste. B, Tustin, CA 92780

Register online at www.ascelasection.org.

Questions can be directed to the ASCE Office at 714-258-8306.

Please Print & Return Coupon with Payment

Registration Deadline is Friday, October 6, 2017

Name (for name tag): _____ Phone: _____

Company: _____ Fax: _____

Address: _____

City: _____ State: _____ Zip: _____

Email (Reservation Confirmation): _____

Spouse/Guest Name(s): _____

Check for \$ _____ enclosed for # _____ Chicken # _____ Vegetarian



ASCE Los Angeles Section

SPONSORSHIP OPPORTUNITIES

Annual Meeting, Installation of Officers & Awards Luncheon at the Dorothy Chandler Pavilion

October 14, 2017 at 11:00 am

This year's event promises to attract the firms, agencies, and people who have helped shape Southern California. We will also be installing our new Section Officers. By helping to sponsor the event, your company will be featured at the Awards Event and in the ASCE Newsletter. The breakdown of the benefits is as follows:

BENEFITS	PLATINUM (\$1500)	GOLD (\$1000)	SILVER (\$500)	BRONZE (\$250)
Listed in Event Program	X	X	X	X
Logo in Program	X			
Logo on display at Event	X	X	X	X
Acknowledgement during Event	X	X	X	X
Ticket(s) Provided to Event	6	4	2	1
Reserved Seating at Event	X			
Newsletter Publicity in December Issue				
- Listed by Name	X	X	X	X
- 1/2 Page Ad Space (\$465 value)	X			
- 1/4 Page Ad Space (\$300 value)		X		

SIGN ME UP! I want to be a part of the ASCE LA Section Awards Celebration and take advantage of the promotional opportunities afforded to me as a selected sponsor (check one).

Platinum ____ Gold ____ Silver ____ Bronze ____

Company Name: _____

Contact Name: _____

Phone: _____ Fax: _____

Email: _____

of Included Tickets: ____ # of Paid Tickets: ____ x \$75 = ____ Total Due for Tickets: ____

Sponsorship Fee: ____ + Amount Due for Tickets: ____ = Grand Total: ____

Names (for name badges): _____

☐ We cannot attend but still wish to sponsor. Please give our ticket(s) to a student.

PLEASE return form and check payable to:
ASCE LA Section, 1405 Warner Ave., Ste. B, Tustin, CA 92780

To pay by credit card, go to www.ascelasection.org.

Questions can be directed to us at 714-258-8306 or email Gayle Stewart at gstewart@gsecorp.org

Want to Engineer the Future? ‘You Need to Be Envision Certified’

by Ben Walpole



The whole “you’ll know it when you see it” concept really only goes so far when it comes to sustainable infrastructure.

“You need some measure of what you mean by sustainability,” said Paul Zofnass, founder of the Zofnass Program for Sustainable Infrastructure at Harvard University. “You can say that sustainable infrastructure is important and everyone nods, ‘Yep, right, sustainable infrastructure is important,’ but what

do you mean by sustainability? How do you define it? How do you measure it?”

The Zofnass Program worked with the Institute of Sustainable Infrastructure – itself an organization cofounded by ASCE – to develop the Envision rating system to do just that: measure the sustainability of infrastructure.

“What was happening in 2009 was that each individual engineering firm was developing its own proprietary way of measuring sustainability,” Zofnass said. “Each one of the firms was competing against the other, and as soon as you start competing with each other, then who does the world believe? What we needed was some form of consensus.”

Envision measures sustainable infrastructure projects in five categories: quality of life, leadership, natural world, resource



Portland General Electric’s Tucannon River Wind Farm was the first energy project in North America to receive the Institute for Sustainable Infrastructure Envision Gold award

allocation, and climate and risk. Dozens of projects around the world have attained Envision platinum and gold in recent years, as the rating system has provided a guideline for owners and designers seeking to incorporate principles of sustainability into their projects.

The Envision program also includes training civil engineers in its use. Individuals who successfully complete the Envision credential training course and exam earn the Envision Sustainability Professional (ENV SP) designation.

“The number of cities in the U.S. that use Envision in assessing and evaluating infrastructure is over 250,” Zofnass said. “That’s pretty important. So if you’re an engineer and you want to work on the big, new projects, redesigning cities, redeveloping transportation, you need to be on top of this. You need to be Envision certified. If you don’t know how to design that way and earn those ratings, you’re not going to be the winner on these projects.”

In Los Angeles, Cris Liban, D.Env., P.E., ENV SP, F.ASCE, L.A. Metro’s executive officer for Environmental Compliance and Sustainability, is making Envision training a priority.

“We have decided that we need to ensure that our staff, as well as our constituents and our vendors, have a common understanding of what sustainability means,” Liban said.

“We said, ‘Let’s make it simple for ourselves; let’s use Envision as that platform for all of our stakeholders to have a common understanding of what sustainable infrastructure is, and that common language of sustainability.’”

Since February, Liban’s group has trained 300 people and certified almost 200 in the L.A. region in Envision.

An ongoing challenge is accounting for advances in science and technology as well as changes to the environment. It’s essential that the Envision system keep pace with the changing world, Zofnass said.

“This is not like something you can slice into stone and have it be the Ten Commandments,” he said. “You need constant research and development to keep it up to date. But you can set the principles, and every few months you update it.

“It’s all about getting a consensus between the engineering side, the academic side, and the government side. You measure it and get wide buy-in. That’s what Envision is all about.”

Get your ENV SP Credentials

The ASCE’s International Conferences on Sustainable Infrastructure (ICSI), October 26-28 in Brooklyn, NY, features an Envision training session.

Outgoing Region 9 Director Message

by Jay H Higgins, P.E., ENV SP, F. ASCE, ASCE Region 9 Director



The October 11th American Society of Civil Engineers (Society) 2017 Annual Convention will mark the end of my term as your Region 9 Director. It is hard to believe that my three-year term has come to an end. It has been a pleasure to represent the members of the four Region 9 Sections: Sacramento, San Diego, San Francisco and Los Angeles, as your representative on the Society's Board of Direction.

I would like to thank all the Region 9 Governors, Committee Chairs, Committee Members and members of the Sections, Branches, Younger Member Groups and local Institutes for their hard work and support of ASCE. You have all greatly contributed to my term being such a pleasant experience over the past three years. I believe Region 9 has accomplished so much in support of the Society's strategic initiatives, as well as many more activities of interest to our members at the local level.

In an October 2014 article for the Section newsletter, I addressed the purpose and objectives of the Region 9 Board of Governors as assisting the Society Board of Direction on a regional basis in governing the Society and providing leadership to carry out programs for the benefit of Region 9. This includes supporting the Society's strategic initiatives. These initiatives have changed slightly since 2104 and are currently the following;

- Advocate for Sustainable Infrastructure – Raise the grades highlighted in the ASCE Report Card by taking into account that the infrastructure should be sustainable;
- Grand Challenge - lower the life cycle costs of infrastructure projects by 50% by the year 2025;
- Raise the Bar – define the educational and experience required to practice as a Professional Civil Engineer.

Let me highlight some of the Region 9 accomplishments in support of these initiatives:

- One of the most successful infrastructure advocacy activities is our annual Region 9 Infrastructure Symposium. The symposium is hosted and rotated around the State to provide each Section geographic area the opportunity to become closely involved in this activity, and to assure the we are reaching members in all areas of the state. This year the Infrastructure Symposium, chaired by Yaz Emrani, Region 9 Infrastructure Policy Committee Chair, was held in Los Angeles. It reached close to 300 members, and involved speakers from many agencies, consulting firms, and three current and former mayors. The Society's 2016-2017 President, Norma Jean Mattei, was in attendance and spoke about the Society's

Infrastructure advocacy activities, and the Infrastructure Report Card released in March 2017.

- The Region formed a Sustainability Committee focused on including the tenets of sustainability in all civil engineering projects. As Chair of the Region 9 Sustainability Committee, Mark Norton has developed this very active committee which includes representatives of all four Sections. The Committee promotes the concept of sustainability and the new sustainability rating system, Envision, for civil engineering projects to our members, legislators and the public at large. The Committee has encouraged members to obtain the Envision® Sustainability Professional (ENV SP) credential. Workshops have been held to provide the training. Notably, a workshop is held each year on the day before our annual Region 9 Infrastructure Symposium.

- The Region has one of the most active legislative advocacy programs in ASCE. The Region 9 Sacramento Legislative Fly-in Day held each year and hosted by the Government Relations Committee, chaired by M.J. Hashemi, brought together around 100 members for a morning legislative briefing before going to the State Capitol to meet with their Senator and Assembly Member. Our member advocacy on legislation positively impacts issues surrounding infrastructure and the civil engineering profession.

- The Region also has a very active Transportation Committee, chaired by David Schwegel. This committee follows pending legislation that impacts the State's transportation infrastructure. In addition to participating in the Legislative Day Fly-In, the Transportation Committee annually holds another visit to state legislators and representatives of state committees directly involved in transportation issues.

- The Region has a very active Water Committee, chaired by Xavier Irias, that also follows pending legislation impacting the state's water resources. In addition to participating in the Legislative Day Fly-In, the Water Committee annually holds another visit to state legislators and representatives of state committees directly involved in water issues.

- The Region recently formed a Task Committee, chaired by Jim Frost, to promote Society's Grand Challenge Initiative, the Society's newest strategic initiative. The investments needed to improve our infrastructure continue to increase well beyond available funding. How do we close the infrastructure gap? The ASCE Grand Challenge asks all civil engineers to join in the solution to: 1) significantly enhance the performance and value of infrastructure projects over their life cycles by 2025; and 2) foster the optimization of infrastructure investments for society. To reach this goal, the profession must influence major policy changes and infrastructure funding levels, while challenging civil engineers to focus on innovation, rethink life cycle costs, and drive transformational change. The Region 9 Committee will work with the Society as they develop an implementation plan for this initiative.

continued on page 10

- The Region has formed a Raise the Bar Committee (RTB) to support one of the three top strategic initiatives of the Society. The goal of RTB is to advance the profession and protect the public welfare by actively supporting the national movement to raise the educational requirements for future professional engineers. The Region RTB Committee is chaired by Kwame Agyare. The committee is up and running with several representatives from the Sections and Branches participating in conference calls and activities. They are coordinating their activities with the Society's RTB Committee and have made presentations to members, which has provided valuable feedback.

- Awards Committee System Upgrade – Our awards Committee, Chaired by Matt Kennedy, has upgraded our Region 9 awards process to align the Section categories with the Region 9 categories, and developed a computerize system that allows the branches and sections to electronically submit award applications to the next level of evaluation. This upgraded system allows a more efficient evaluation process for the submittals for recognizing the great civil engineering work done by individuals and the project teams in our Region.

The Region has several other committees working to benefit our members and keep the Region organization effective. They include:

- Disaster Preparedness Committee, chaired by Doug Taylor, which is training our members to be prepared to respond to calls from the State of California to help during the disaster response phase of natural and man-made disasters. Look for announcements in the Section newsletters for opportunities for Safety Assessment Program (SAP) training in post-disaster engineering assessments.

- California State Report Card Committee, chaired by John Hogan and Tony Akel, are in the process of coordinating an update to the California Infrastructure Report Card, for release by March 2019. This is a very valuable tool to use in our legislative advocacy activities.

- BPELSG Committee, chaired by Thor Larsen, endeavors to send a representative to every CA Board of Professional Engineers, Land Surveyors, and Geologists Board meetings to show our support of

the board and to remain current on actions affecting professional Civil Engineers.

- Younger Member Forum Committee, chaired by Gidti Ludesirishoti, keeps the Region 9 Board informed of the various activities of the younger member forums, and allows us to be proactive in supporting their activities.

- History and Heritage Committee, chaired by Chuck Spinks (former Region 9 Director), recognizes the great civil engineering projects within the state of California. Region 9 coordinates with the Sections and Branches on identifying worthy historic projects deserving of recognition. It is important to let the public know about the significant civil engineering projects that improve their quality of life.

- The Audit Committee, chaired by Thor Larsen, and the Membership Committee, chaired by Matt Kennedy, help with the internal activities to keep Region 9 running effectively.

I am grateful to all these committee chairs, Section Presidents and Governors, who participate in all our board meetings, as well as those members that served on committees. I appreciate their commitment to ASCE, their hard work, and their dedication in helping to make Region 9 effective in benefiting our members.

Beginning in October 2017, Kwame Agyare, the current Vice Chair for Region 9, will become the Director of Region 9 and will serve on the Society Board of Direction. I have the greatest confidence that he will continue the great work being done by our committees and members, and will move our Region forward in providing benefits to our members.

I have no definitive plans for my future involvement in ASCE, but I know that I will continue to support our organization in any way I might be asked to serve. If you have any questions or comments please feel free to contact me at: jayhiggins896@gmail.com or my cell phone at (818) 406-4896.

ASCE | **INTERNATIONAL CONFERENCE ON
SUSTAINABLE INFRASTRUCTURE**

New York City | October 26-28, 2017

Sustainable Cities for an Uncertain World

AES Advanced Earth Sciences, Inc.
Geotechnical and Environmental Consultants

Kris Khilnani, PE, GE - President
Dr. Sujl Somasundaram, PE, GE - Principal Engineer
Grant Miller, PG, CEG - Principal Geologist

(949) 379-2450
9307 Research Drive Irvine, CA 92618
FAX: (949) 379-2470
Website: www.aessciences.com

ADVANCED ENGINEERING SOFTWARE

Software written & supported by the
AUTHORS OF THE COUNTY MANUALS

advancedengineeringsoftware.com
SD: (760) 510-5940, OC: (657) 229-0090

CREATE. ENHANCE. SUSTAIN.

AECOM
www.aecom.com

With offices throughout Southern California, we deliver expert solutions for our clients.
515 S. Flower Street, 4th Floor, Los Angeles, CA 90071
P + 1.213.330.7200

amec foster wheeler

- Geotechnical Engineering
- Construction Materials Inspection/Testing
- Construction Management
- Environmental Science and Engineering
- Earthquake-Related Services
- Air Toxics and Health Risk Assessment

James J. Weaver PE, GE
Tel (323) 889-5300
Fax (323) 721-6700

6001 Rickenbacker Rd.
Commerce, California
USA 90040-3031
www.amecfw.com

Cannon
ENGINEERING • PLANNING • CONSTRUCTION

J. Eric Porkert, PE
General Manager and Senior Principal Engineer

Public Infrastructure; Land Development;
Education; Energy; Survey & Mapping;
Aerospace/Defense

310.664.1166
www.CannonCorp.us

For Over 15 Years
CASC has Helped Agencies get Through Plan Checking Log Jams

Drainage Reports SWPPP/WQMPs Maps/Legals
Streets Sewer Water Storm Drain

CASC
Engineering and Consulting
www.cascinc.com

CHJ CONSULTANTS IS NOW A TERRACON COMPANY!

CHJ Consultants
A Terracon Company

1355 E. Cooley Drive | Suite C | Colton, CA 92324
(909) 824-7311 | chjconsultants.com

Environmental • Facilities • Geotechnical • Materials

CWE

Vik Bapna
PE, CPSWQ, OSD/P
Principal

Certified 8(a), DBE, MBE, SBE

1561 E. Orangethorpe Avenue Suite 240
Fullerton, CA 92831
www.cwecorp.com

Office (714) 526-7500 x212
Mobile (714) 262-0180
Fax (714) 526-7004
vbapna@cwecorp.com

ENGINEERING • WATER • ENVIRONMENTAL

DAVID EVANS AND ASSOCIATES, INC.

TRANSPORTATION
WATER RESOURCES
LAND DEVELOPMENT
ENERGY
SURVEYING GEOMATICS
MARINE SERVICES

CALIFORNIA LOCATIONS
Los Angeles | Ontario | San Diego
Santa Clarita | Temecula | Tustin | Victorville

800.721.1916
www.deainc.com

DAVID R. GRAY, INC.
Surveys-Subdivisions-Mapping

David R. Gray
CEO / Principal Land Surveyor

621 Via Alondra, Suite 609
Camarillo, CA 93012

(805) 987-3945
Fax: (805) 987-1655
davidg@drgrayinc.com

DIAZ-YOURMAN & ASSOCIATES

Christopher M. Diaz, PE, GE
Principal

Geotechnical Services

1616 East 17th Street Santa Ana CA 92705-8509
Tel. (714) 245-2920 • Fax (714) 245-2950 • Cell (714) 412-2093
chris@diazyourman.com www.diazyourman.com

Earth Mechanics, Inc.
Geotechnical & Earthquake Engineering

Foundation Design
Seismic Evaluation
Soil-Structure Interaction
Field Investigation and Laboratory Testing
Grading and Foundation Inspections

www.earthmech.com

San Marcos 760.736.8222 Fountain Valley 714.751.3826 Hayward 510.562.8833

GENTERRA Consultants, Inc.

Joseph J. Kulikowski, P.E., G.E.
President and Senior Principal Engineer

15375 Barranca Parkway, Building L
Irvine, California 92618

Tel: 949.753.8766 Fax: 949.753.8887
joekul@genterra.com
www.genterra.com

CIVIL ENGINEERING • GEOTECHNICAL ENGINEERING • DAMS AND LEVEES
OFFICES IN NO. & SO. CALIFORNIA, COLORADO AND PENNSYLVANIA
SERVICES PROVIDED NATIONWIDE

GeoPentech
Geotechnical & Geoscience Consultants

- Geotechnical Engineering
- Geo-Earthquake Engineering
- Seismic Hazards Evaluation
- Soil Dynamics/Vibrations
- Engineering Geology
- Hydrogeology
- Seismic Geology
- Forensic Studies

Sarkis Tatusian, Principal Geotechnical Engineer
5251 California Avenue, Suite 210
Irvine, California 92617
Phone: (714) 796-9100; FAX: (714) 796-9191
Web Site: www.geopentech.com

GPI
GEOTECHNICAL PROFESSIONALS, INC.

James E. Harris, G.E.
Byron Konstantinidis, G.E.
Paul R. Schade, G.E.

5736 Corporate Ave.
Cypress, California 90630
(714) 220-2211 Fax (714) 220-2122
www.gpi-ca.com

GREGG

Phone: (562) 427-6899
Fax: (562) 427-3314
Email: info@greggdrilling.com
Web Site: www.greggdrilling.com

GREGG DRILLING & TESTING, INC.

- ENVIRONMENTAL and GEOTECHNICAL DRILLING
- WELL INSTALLATION
- CONE PENETRATION TESTING

2726 WALNUT AVE. • SIGNAL HILL, CA 90755

GROUP DELTA CONSULTANTS

GEOTECHNICAL ENGINEERING
MATERIALS TESTING & INSPECTION
Serving Southern California since 1986

Michael Reader, G.E.
Principal Engineer
Tom Swank, G.E.
Principal Engineer

Group Delta Consultants, Inc.
Los Angeles County: (310) 320-5100
Orange County: (949) 608-1020
San Diego County: (858) 524-1500
www.GroupDelta.com

gsi Geotechnical Stabilization, Inc.

Amer R. Al-Alusi, P.E.
President
alusi@gsigrout.com

Chemical Grouting Compaction Grouting
PressGrout Piles Helical Piers

1566 Sterling Court • Escondido, CA 92029-1208
Phone (760) 489-6696 • Fax (760) 489-6697

Hall & Foreman, Inc.

IS NOW **DAVID EVANS AND ASSOCIATES, INC.**

800.721.1916
www.deainc.com
www.hfinc.com

CALIFORNIA LOCATIONS: Los Angeles • Ontario • Sacramento • San Diego
Santa Barbara • Santa Clarita • Temecula • Tustin • Victorville

HDR

ONE COMPANY | Many Solutions™

SERVICES:
Water/Wastewater • Transportation
Environmental • Construction Management

801 So. Grand Avenue, Suite 500, Los Angeles, CA 90017
213.239.5800 www.hdrinc.com

Kiewit

KIEWIT INFRASTRUCTURE WEST CO.
10704 Shoemaker Ave., Santa Fe Springs, CA 90870
(562) 946-1816
www.kiewit.com

K&S KRIEGER & STEWART Engineering Consultants

Water • Wastewater • Recycled Water • Storm Water
Planning • CEQA/NEPA • Surveying
Design • Construction Management • Inspection

Engineering the Details, Because Details Matter
Riverside, CA 92501 • 951.684.6900 office
www.kriegrandstewart.com

KEHOE TESTING & ENGINEERING

- Cone Penetration Testing (CPT)
- Direct Push Soil, Water & Vapor Sampling
- Truck Mounted, Track & Ltd. Access Rigs

Soil Testing & Sampling Services
for Geotechnical & Environmental Consultants

5415 Industrial Drive
Huntington Beach, CA 92649-1518
(714) 901-7270 (714) 901-7289 fax

STEVE KEHOE, P.E.
PRESIDENT

LaBelle • Marvin
PAVEMENT ANALYSIS, DESIGN, TESTING & INSPECTION SINCE 1969

Steven R. Marvin, P.E.
President

2700 S. Grand Ave.
Santa Ana, CA 92705
Ph (714) 546-3468
Fax (714) 546-5841
smarvin@labellemarvin.com
www.labellemarvin.com

Geotechnical Environmental Site/Civil

LANGAN

www.langan.com 213.943.1310

Los Angeles Irvine Oakland Sacramento San Francisco San Jose
CA NJ NY CT PA OH DC VA FL TX ND

Leighton Consulting, Inc.

866-LEIGHTON

Thomas C. Benson, Jr., PE, GE | President and CEO

Geotechnical | Environmental | Testing and Inspection

Michael Baker INTERNATIONAL

We Make a Difference

Planning/Urban Design • Transportation/Traffic
Land Development • Water Resources • Structures
Survey/Mapping • Public Works • Surface Water

801 S. Grand Avenue, Suite 250, Los Angeles, CA 90017
Don Sepulveda, PE, (213) 797-5985

MBAKERINTL.COM

MNS ENGINEERS INC

SERVICES:
Civil Engineering
Construction Management
Surveying

MARKETS:
Transportation
Water Resources
Federal
Government

Builton • Pasadena • Salinas • San Jose • San Luis Obispo • Santa Barbara • Westlake Village

NMG
Geotechnical, inc.

Hayim Ninyo
Ted Miyake

17991 Fitch, Irvine, CA 92614
Phone (949) 442-2442 Fax (949) 476-8322
E-Mail: hninyo@nmgeotechnical.com
www.nmgeotechnical.com

PACE
Advanced Water Engineering

...in partnership with nature

- Water / Wastewater
- Manned Lakes / Streams
- Fountains / Pools
- Stormwater Management
- River Engineering
- River / Wetland Restoration

WWW.PACEWATER.COM
HEADQUARTERS
17520 Newhope Street, Suite 200 | Fountain Valley, California 92708
main: 714.481.7300 fax: 714.481.7299
ADDITIONAL LOCATIONS:
SCOTTSDALE, AZ • BEIJING, CHINA

PARSONS

100 W. Walnut Street
Pasadena, California 91124
(626) 440-3355 • Cell: (626) 710-0494
Fax: (626) 440-6337
satish.kamath@parsons.com

Satish Kamath, P.E., BCEE
Vice President

www.parsons.com

Port of LONG BEACH
The Green Port

4801 Airport Plaza Drive, Long Beach, CA 90815

PSOMAS

Civil Engineering Land Surveying
Construction Management Environmental Consulting

Balancing the Natural and Built Environment

Project X
Corrosion Engineering
Ed Hernandez, PE, NACE CCT
MBE • DBE • SDB • SBE • SBA 8(a)

Soil / Water / Metallurgy Lab
Corrosion Control Consulting
Phone : 213-928-7213 • info@projectxcorrosion.com
5 Day Turn-Around Lab • Forensic Engineering
Condition Assessment • Cathodic Protection

P: (805) 543-1794 | www.rrmdesign.com

rrmdesigngroup

creating environments people enjoy®

Community | Civic & Public Safety | Education | Recreation | Urban
architects | engineers | landscape architects | planners | surveyors

Stantec

We bring
infrastructure
projects to life

Design with community in mind stantec.com

Civil Engineering - Water Resources - Construction Management
Environmental - Surveying - Program Management - Inspection

TKE ENGINEERING INC.

2305 Chicago Avenue - Riverside - CA - 92507
Ph. (951) 680-0440 - Fax (951) 680-0490
www.tkeengineering.com

www.vacconsultinginc.com

VA CONSULTING

Max Vahid, P.E.
President and CEO
maxvahid@vacconsultinginc.com
Tel: 949.474.1400 | Fax: 949.261.8482

Engineering Services in:
Flood Control | Drainage | Water Quality
Potable Water | Recycled Water | Wastewater
Transportation | Traffic | Plan Checking
Structural | Land Use Planning | Site Development
Surveying | Construction Management

Offices in: Irvine - Corona - Palm Desert

VALUED ENGINEERING, INC.

"Engineering with values and integrity"

CIVIL ENGINEERING • LAND SURVEYING • LAND PLANNING

180 N. Benson Avenue, Suite "A"
Upland, CA 91786
Office: (909) 982-4601
Cell: (909) 927-7347
jeff@valued-eng.com
www.valued-eng.com

Jeff D. Meiter, LS, RCE
President

SUSTAINABILITY COMMITTEE

CALL FOR MEMBERS

http://www.ascelasection.org/main/groups/sustainability_committee

Conference calls on every 2nd
Thursday of the month

To join our email list
Please contact:
Jason Zhang, PE, ENV SP
626-458-3138
jzhang@dpw.lacounty.gov

ASCE
LOS ANGELES SECTION



Reminder:

Copy deadline for the October 2017 issue is September 1, 2017; copy
deadline for the November 2017 issue is October 1, 2017.

National ASCE (800) 548-2723 (ASCE)
Access National ASCE at: www.asce.org
L.A. Section web site at:
www.ascelasection.org

MATERIALS SUBMISSION INFORMATION

All graphic materials submitted for use in the ASCE newsletter should have all fonts outlined, and links included; EPS or PDF files preferred. Other formats are Adobe InDesign or Adobe Illustrator (any version); additional acceptable file formats are JPEG or TIFF files (minimum 300 dpi). Images embedded in Microsoft Word documents should be sent separately, at a minimum resolution of 300 dpi at the display size desired. Collected files, including links and fonts, should be compressed and e-mailed, or sent on CD or Zip disk (provide return address). Business cards can be submitted electronically as well, or send clean, crisp, B&W laser print, unfolded. This publication's size is 8½" 11".

Los Angeles Section

Monthly: Est. 1913

1405 WARNER AVE.
SUITE B
TUSTIN, CA 92780

POSTMASTER: THIS CONTAINS TIME-SENSITIVE MATERIALS.
PLEASE DELIVER PROMPTLY.



This newsletter is printed on
Forest Stewardship Council
(FSC)-certified paper using
soy-based ink.

**Please contact ASCE Membership at
1-800-548-ASCE for any address changes.**

NEWSLETTER INFORMATION

Publisher

ASCE LA Section
Gayle Stewart
1405 Warner Ave., Suite B
Tustin, CA 92780
Phone (714) 258-8306
Fax (714) 784-7806
E-mail: gstewart@gsecorp.org

Editor

Dr. Cris B. Liban, P.E.
LACMTA
One Gateway Plaza
Mail Stop 99-16-9
Los Angeles, CA 90012
Phone (213) 922-2471
FAX (213) 922-6875
E-mail: cliban@alumni.ucla.edu
Typesetting, Layout & Printing: Apollo Printing & Graphics



Please send all copy to the Editor by
the first of the month preceding publication.

Identification Statement

ASCE Newsletter, (ISSN 0273-6233)
is published monthly by ASCE,
Los Angeles Section, 1405 Warner Ave.
Tustin, California 92780. Subscription price
included in Section dues of \$55.

Circulation

Circulated monthly (except for a joint
July/August issue) to the 5,000 subscribing
members of the Los Angeles Section, ASCE.

NEW Advertising Rates

EMPLOYMENT ADS	DISPLAY ADS
\$100/column inch	1/8 page \$200
	1/4 page \$300
	1/2 page \$465
	1 page \$740

PROFESSIONAL DIRECTORY

\$450 per business card for a full year
(Additional fees may be applied for typesetting.
Please call for information.)

POSITION WANTED ADS

No cost to L.A. Section members.

For more advertising and billing information,
please contact Gayle Stewart at (714) 258-8306
or gstewart@associationplanet.com

National ASCE (800) 548-2723 (ASCE)
Access National ASCE at: www.asce.org
L.A. Section web site at: www.ascelasection.org