

# Los Angeles Section

Monthly: Est. 1913

ORANGE / SAN\_BERNARDINO/RIVERSIDE / SAN\_LUIS\_OBISPO / SANTA\_BARBARA/VENTURA / DESERT /  
SOUTHERN SAN\_JOAQUIN / METROPOLITAN LOS ANGELES

## PRESIDENT'S MESSAGE

Jay Higgins, P.E., M.ASCE  
Section President

## History and Heritage



Driving down the local highway with my two young daughters, their eyes dart from one side of the road to the other hoping to discover "the sign" before I do. If they find it before me, and it is on the right side of the road, they quickly say, "Hey Dad, what's that over there on the left side of the road?". They are trying to distract me from seeing "the sign" that announces the historic landmark up ahead. But their ploy didn't work, my senses are keen for these signs, and most times I would spot the sign, and we would stop to see the interesting site. When we stop, the next plea from daughters

would be, "Please dad, please, don't read the whole plaque, not every word!" Of course I would read every word and point out the interesting features of the site or project. One case in point was when we were driving to visit a friend on Cape Cod and I spotted a sign for the prize of all prizes, a National Historic Civil Engineering Landmark, the Cape Cod Canal. Not only did I read every word on the plaque, but I even took a picture of it. (ASCE President Blaine Leonard takes pictures of manhole covers; I like to take pictures of plaques). My daughters are older now (20 and 28 years old), and I believe they now appreciate the importance of a significant civil engineering project which has attained historical significance worthy of receiving the ASCE historical designation, although they still don't have much patience while I read every word on the plaque.

History and Heritage is an important part of the ASCE activities. Some of the objectives of the program are to "Encourage all civil engineers to become aware of the history and heritage of their own profession" and "Increase appreciation by the public of civil engineering contributions to the progress and development of the United States and the world." (See side bar).

From: [www.asce.org](http://www.asce.org), History and Heritage

### Historic Civil Engineering Landmark Program

The Historic Civil Engineering Landmark Program recognizes historically significant local, national, and international civil engineering projects, structures, and sites. The objectives of the program are to:

1. Encourage all civil engineers to become more aware of the history and heritage of their own profession.
2. Increase appreciation by the public of civil engineering contributions to the progress and development of the United States and the world.
3. Identify and designate national historic civil engineering works that have made a significant contribution to the development of the United States and other countries and to the profession of civil engineering in particular.
4. Encourage, where appropriate and feasible, the preservation of significant historic civil engineering works.
5. Provide a documented archive of Civil Engineering Historic Landmarks for the use of engineering students, professional writers, researchers, and historians.
6. Promote the inclusion of information on Historic Civil Engineering Landmarks in encyclopedias, guidebooks and maps used by the general public



## Engaging History

An old saying goes something like, "We need to study history, lest we repeat its mistakes". We examine this idea in a couple of articles in this current issue. Our Section President Jay Higgins, P.E. talks about the engineering landmarks that our Society recognizes on a regular basis. These landmarks complement the historical landscape of buildings and infrastructure without which, commerce and industry of the past may not have been as effective. In another article, we congratulate our Life Members for their achievement of this significant milestone.

I look at historical landmarks in different perspectives. First, they are symbols of the technologies of the past, that regardless of how crude or how basic those technologies were, the great engineers of yesterday were able to create magnificent monuments. Second, these landmarks serve as inspiration to future engineers to innovate to the best of their ability in order create a better, more cost-effective, and (hopefully) environmentally friendly built environment.

Couple these with a celebration of our Life Member's works, engineering monuments serve as reminders to us of the people who have tirelessly toiled behind their creations. While only a few people are mentioned on the plaques that accompany these landmarks, in my opinion, it is actually the unknown laborer, engineer, architect, and worker, whose work it is not acknowledged that we should be most thankful for.

We salute those who come before us. It is through their work and inspiration that we move forward with progress.

Enjoy your issue of the newsletter!

- Dr. Cris B. Liban, P.E.

## A Great Idea From the Life Members

The ASCE Life Members' Public Image Committee request that members take their (to be discarded) Civil Engineering magazines to their doctor's office or barber shop and merge them with the stack of magazines. We feel that this will be an effective way to make the general public more aware of what civil engineers do.

### Reminder:

*Copy deadline for the May 2010 issue is April 1, 2010; copy deadline for June 2010 issue is May 1, 2010.*

## Walt Disney Concert Hall Technical Tour

*By: Diana Szymanski*

On Friday, February 12th, 40+ members of the Los Angeles YMF were part of a two hour technical tour of the Walt Disney Concert Hall. The guided tour was kick-off with a presentation hosted by architect Walter Steimle and engineer Kunal Dewan from John A. Martin & Associates, Inc, lead architects on the project who presented on design aspects and challenges of this engineering marvel. The Los Angeles YMF group was then joined by Walt Disney Concert Hall staff with a behind the scenes guide of the concert hall, showing us mechanical rooms, concrete columns and steel beams holding seismic loads. We concluded the tour at the beautiful concert hall.

Los Angeles YMF hosted appetizers at McCormick & Schmick's immediately following the event where tour participants further had the opportunity to mingle and network. L.A. YMF would like to thank Walter Steimle and Kunal Dewan for their insight into the design and construction of the Walt Disney Concert Hall and Jeanice F. Williams, Coordinator, Tours and Special Events Director for the Walt Disney Concert Hall for making this special tour a memorable experience for our participants.

Please visit L.A. YMF website at [mlab-ymf.org](http://mlab-ymf.org) for more photos of this tour.



# California Legislative News from the Region 9 Board of Governors

The Region 9 Board of Governors is supporting Assembly Bill 1431 [<http://tiny.cc/HKAm6>] by Assembly Member Jerry Hill (D-South San Francisco). Last year, as part of the budget package the Legislature consolidated the Board for Geologists and Geophysicists with the Board for Professional Engineers and Land Surveyors (BPELS). AB 4X 20 transferred all of the roles and responsibilities of the Board for Geologists and Geophysicists to BPELS, but did not change the title BPELS to reflect their new role and responsibilities, nor did it include a licensed geologist or geophysicist on the Board now overseeing geologist and geophysicists. AB 1431 updates the name and expands membership to include one licensed geologist or geophysicist. In deciding to support the bill, ASCE Region 9 Governors felt it important that geologists and geophysicists be represented on the board. The bill has been approved by the Assembly and is awaiting its first hearing in the State Senate.

Region 9 has joined a broad coalition of professions licensed by the State in opposing efforts to give the Franchise Tax Board (FTB) broad authority to suspend a professional license, including an engineer's license, for failure to pay taxes. Existing law permits BPELS to suspend or deny renewal or a license if notified by the FTB. But the FTB wants to bypass the individual license boards and be permitted to revoke a professional practice license when taxes are owed. The ASCE Region 9 Board of Governors voted to oppose the bill, in part because the proponents of the plan could not explain how a taxpayer with an outstanding tax obligation could pay if they couldn't work in their licensed profession. The coalition has proposed amendments to counter the argument that license boards ignore tax claims. The proposal is part of this year's budget package and may be amended into several of the budget bills being considered by the Legislature.

Region 9 has joined a similar coalition of more than 1,000 business and professional societies in opposing a mandate that anyone employing a non-corporate independent contractor withhold 3% of any payments and remit these amounts to the State. The 3% is credited against the final tax obligation of the contractor but if it results in overpayment of estimated taxes, it becomes an "interest free" loan to the State and, if California financial problems continue, could be refunded with an IOU.

The Region 9 Board of Governors concluded that this idea is bad for engineers whether they work for a consultant engineering firm or a public agency. It was pointed out that the 3% withholding requirement makes it harder for a public agency to build a multi-disciplinary team for its projects, and would create a paper keeping and reporting nightmare requiring the agency to check if withholding is needed, then send the money every month to the State Treasurer, and then report to the consultant at the end of the year – and there is no reimbursement for these costs and no additional revenue to the State. All it does is collect the money monthly instead of quarterly. Like the license suspension bill, this idea is part of the budget package being considered by the State Legislature.

Region 9 is watching Senate Bill 189 [<http://tiny.cc/7rzTs>] by Senator Alan Lowenthal (D-Long Beach). This omnibus mechanics lien bill recodifies, reorganizes, and clarifies the mechanics lien statute, and enacts separate provi-

*continued on page 7*

## ASCE's 2010 Member-Get-A-Member Drive Depends on You!



### LA-Section Mentorship Committee

## Mentoring Program Is Seeking "Champions" To Become A Committee Member

The Mentoring Committee is planning to hold a Training Workshop in downtown Los Angeles to jump start the Mentoring Program through out the LA-Section's Seven Branches. The goal of the Training Workshop is to provide guidelines on all aspects of mentoring. Please join me to make a substantial difference in the future of our members in general, especially members of YMF by signing up as a Committee Member, Mentor and/or Protégé.

A Mentor can be an engineer with just a few years of experience that can benefit less experienced engineers.

A Protégés could be a Civil Engineering student, recent graduate or licensed engineer with several years of experience who would like to be mentored by a more experienced engineer.

A Committee Member can be any eager member who is self motivated and enthusiastic to help out with planning, implementation and follow up activities of this very worthy Committee.

The Program Benefits: There are a number of valuable benefits (i.e., sharing our professional experience and others) from this free program that is an added benefit to our members who would like to make a difference in our organization, as a whole.

Participation: We request Mentors commit to working with a protégé for the duration of the program. It is recommended that you and your protégé contact each other via e-mail, telephone and/or in person on a regular basis.

For additional information and/or signing up, please contact Neil Nilchian, PE, M.ASCE, Chairman of the Committee at [nrrn@att.net](mailto:nrrn@att.net).



# ASCE – Los Angeles Section Honors 2010 New Life Members

The Life Member Forum's brunch to honor "New Life Members" has become a March tradition in the Los Angeles Section. This year's event was again held at the Monterey Hill Restaurant in Monterey Park on Saturday, March 6th. Jay Higgins, P.E., Los Angeles Section President welcomed a well attended crowd of new Life Members with their guests, other Section members, and student chapter members. This included a large group of students and their Dean from the new California Baptist University in Riverside as well as students from other local universities. It was encouraging to have these students participate in this event honoring the life time achievements of our members. The achievements of these new life members were read as the Life Member Certificates were presented. The accomplishments covered many areas in civil engineering, showing how these members have improved the lives of all of us throughout their careers. Again this year, it was a most impressive group.

We were honored to have Kathy Caldwell, P.E., the National ASCE President-Elect as the keynote speaker. Her message on "MOVE: A Vision for the Future" tied in very well with the aspirations of the student chapter members in attendance. She was pleased to have these students at the brunch as she teaches and mentors students in her home state of Florida.

The "Robert W. Bein Annual Lifetime Achievement Award" was presented by Robert Bein, P.E. to Joseph (Joe) Buley, P.E. for his outstanding work with the Life Member Forum. Joe has been instrumental in making the arrangements for the Life Member Brunch for the past several years. Joe has had a very impressive career in a number of areas of the country and is currently engaged with the Los Angeles County Metropolitan Transportation Authority.

Larry Lewis, LMF President, welcomed the new life members and encouraged them to check out the Life Member Forum activities and attend one of the monthly meetings. The LMF in addition to its serious side to help with various community problems also stress having a fun time in all that they do.





# Spring Summer 2010 Continuing Education Schedule, Region 9

SEMINARS	TECHNICAL DIVISION	DATES	CITY/STATE
Risk Assessment in Geotechnical Engineering	Geotechnical	April 22-23, 2010	San Francisco, CA
Liability of Engineers: How to Stay out of Trouble	Management and Leadership	April 29-30, 2010	Orange County, CA
Construction Administration for Engineers	Construction/Development	May 13-14, 2010	Sacramento, CA
Earth Retaining Structures Selection, Design, Construction and Inspection: Now in an LRFD Design Platform - Newly Updated!	Geotechnical	May 13-14, 2010	San Diego, CA
Low Impact Development Applications for Water Resource Management	Hydraulics/Environmental	May 20-21, 2010	San Francisco, CA
Structural Condition Assessment of Existing Structures	Structural	May 20-21, 2010	San Diego, CA
Leadership Development for the Engineer	Management and Leadership	June 17-18, 2010	San Francisco, CA
Cable-Stayed Bridges: Key Design, Construction and Management Issues- New!	Structural	June 24-25, 2010	San Francisco, CA
Pumping Systems Design for Civil Engineers	Hydraulics & Water Resources	June 24-25, 2010	San Diego, CA
Introduction to Tunnel Design and Construction	Geotechnical	July 14-16, 2010	San Diego, CA
Sustainable Land Development- Ensuring Growth in a Green Economy - New!	Construction/Development	July 15-16, 2010	San Francisco, CA
HEC-RAS Computer Workshop for Unsteady Flow Applications	Hydraulics & Water Resources	July 28-30, 2010	San Francisco, CA
Ownership Transition Planning, Company Valuations Strategic Planning - Newly Updated!	Management and Leadership	September 9-10, 2010	San Francisco, CA
Design and Construction of Microtunneling Projects	Geotechnical	September 15-17, 2010	San Francisco, CA

Please contact 1-800-548-ASCE to register for any of these events.

## www.structuralsolutions.com

# 2010 STRUCTURAL ENGINEERING REVIEW SEMINARS & MANUAL

BYA Publications is pleased to announce the 10<sup>th</sup> consecutive year of the most comprehensive and value added series of structural engineering seminars in California. The 11 session program is comprised of detailed and interactive presentations of a selection of problems and topics included in the California and the NCEES Structural Engineer exams. Also included are discussions of recent development in structural and seismic engineering and the important State amendments. **These seminars also provide the best in-depth review of the latest code provisions for those not considering taking the S.E. exam.**

**“Register early and save up to \$400”**

All classes are on Saturdays or Sundays from 9:00 a.m. to 4:00 p.m.

At the La Quinta, 3 Centerpointe Drive, La Palma, CA 90623, Phone: (714) 670-1400

May 1	Wind & Seismic Provisions	Ben Yousefi, MS, SE
May 23	Steel Design, Part I	Dr. Michael Engelhardt, Ph.D., PE
June 20	Advanced Analysis/Dynamics	Dr. Farzad Naeim, Ph.D., SE, Esq.
June 26	Concrete Design, Part I	Dr. Cheng Ming Lin, Ph.D., S.E
July 10	Wood Design (CBC/IBC)	Kelly Cobein, MS, SE
August 7	Masonry Design (CBC/IBC)	Dr. Chukwume Ekwueme, Ph.D., SE
August 22	Steel Design, Part II	Dr. Michael Engelhardt, Ph.D., PE
August 28	CBC Amendments, New Buildings	Chris Tokas, MS, SE
August 29	CBC Amendments, Existing Bldgs	Chris Tokas, MS, SE
September 11	Concrete Design, Part II	Dr. Cheng Ming Lin, Ph.D., S.E
October 2	General Overview/ All topics	Ben Yousefi, MS, SE

**For complete registration information please check our web site  
www.strcuturalsolutions.com**

# Congratulations to the 2009 Region 9 Awards Recipients

## Project of the Year

American River Pump Station and Restoration Project  
Owner: Placer County Water Agency  
Contractor Partner: US Bureau of Reclamation  
Engineer of Record: WHPacific and MWH Americas

## Outstanding Sustainable Technology Project

Poly Canyon Village  
Owner: California Polytechnic State University, San Luis Obispo  
Engineer of Record: Cannon

## Outstanding Architectural Engineering Project

The Cathedral of Christ the Light  
Owner: Roman Catholic Diocese of Oakland  
Engineer of Record: Skidmore, Owings & Merrill LLP

## Outstanding Water Project

Twin Oaks Valley Water Treatment Plant DBO Project  
Owner: San Diego County Water Authority  
Engineer of Record: CH2M HILL, Inc.

## Outstanding Small Water Project

Peralta Creek Restoration Project, Oakland CA  
Owner: Alameda County Flood Control and Water Conservation District  
Engineer of Record: Alameda County Flood Control and Water Conservation District

## Outstanding Wastewater Project

Hangtown Creek Water Reclamation Facility – 2005 Facility Improvements  
Owner: City of Placerville  
Engineer of Record: Owen Psomas

## Outstanding Highway Project

Route 99 Widening/Hammer Lane Interchange Reconstruction  
Owner: San Joaquin Council of Governments  
Engineer of Record: Mark Thomas & Company

## Outstanding Rail Project

Oceanside-Escondido Sprinter Rail Line  
Owner: North County Transit District  
Engineer of Record: AECOM

## Outstanding Bridge Project

The Mary Avenue Bicycle Footbridge  
Owner: City of Cupertino  
Engineer of Record: HNTB Corporation

## Outstanding Small Transportation Project

City of Fort Bragg Downtown Streetscape  
Owner: City of Fort Bragg  
Engineer of Record: Green Valley Consulting Engineers

## Outstanding Environmental Project

Pajaro Basin Freshwater Wetland Project  
Owner: Santa Clara Valley Water District  
Engineer of Record: Santa Clara Valley Water District

## Outstanding Geotechnical Project

San Pablo Dam Seismic Upgrades  
Owner: East Bay Municipal Utility District  
Engineer of Record: Terra Engineers, Inc.

## Outstanding Urban Design & Beautification Project

Bird Rock Coastal Traffic Flow Improvement Project  
Owner: City of San Diego  
Engineer of Record: Project Design Consultants

## Outstanding Structural Engineering Project

Contemporary Jewish Museum, San Francisco  
Owner: Contemporary Jewish Museum  
Engineer of Record: OLMM Consulting Engineers

## Outstanding Energy Project

30th Street 20a Transmission Undergrounding  
Owner: San Diego Gas & Electric and the City of San Diego  
Engineer of Record: Nolte Associates, Inc.

## Outstanding Integrated Design Project

Foothill Raw Water Supply Pump Station (Ophir Road Pump Station)  
Owner: Placer County Water Agency  
Engineer of Record: West Yost Associates

# Individual Award Recipients

## Outstanding Civil Engineer in the Private Sector

Eddie W. Kho, P.E. – Sacramento Section, Morton & Pitalo, Inc.

## Outstanding Civil Engineer in the Public Sector

Johanna Wong, P.E. – San Francisco Section, San Francisco Public Utilities Commission

## Outstanding Civil Engineer in Community Service

Ziad Y. Mazboudi, P.E. – Los Angeles Section, City of San Juan Capistrano  
Douglas Taylor, P.E. – San Francisco Section, State of California CALFIRE

## Outstanding Civil Engineering Student

Kyle Burnham – Los Angeles Section, University of Southern California  
Daniel Cloutier – Sacramento Section, California State University Sacramento

## Lifetime Achievement Award

Maurice Roos, P.E. – Sacramento Section, State of California Department of Water Resources

## Outstanding ASCE Life Member

Joseph Kaplan, P.E. – San Francisco Section, Joseph Kaplan, Inc.

## Outstanding Civil Engineering Faculty Advisor

Ali Porbaha, P.E. – Sacramento Section, California State University Sacramento

## Outstanding ASCE Practitioner Advisor

Kari Wagner, P.E. - Los Angeles Section, Wallace Group

## Outstanding Younger Civil Engineer

John Prince, P.E. – San Diego Section, RBF Consulting

## Outstanding ASCE Section Officer

Jay Higgins, P.E. – Los Angeles Section, URS Corporation

## Outstanding ASCE Branch Officer

Erik Okada, S.E. – San Francisco Section, HNTB Corporation

## Outstanding ASCE Younger Member Officer

Rune Storesund, P.E. – San Francisco Section, Noble Consultants, Inc.

## Outstanding Engineer in Legislative Activities

Gary Gilbert, P.E. – Los Angeles Section, Diaz Yourman & Associates

## Legislator of the Year

California Assembly Member Anna Caballero  
State Senator Dave Cogdill



# FOURTH ANNUAL CALIFORNIA INFRASTRUCTURE SYMPOSIUM

By Shahnawaz Ahmad, Region 9 Governor

ASCE Region 9 held the Fourth Annual California Infrastructure Symposium on February 9, 2010, in Sacramento. This Symposium assessed the State's infrastructure, particularly water and transportation issues, as well as fiscal concerns. The vitality of California's infrastructure is an essential key to growth and prosperity, however, investment in this infrastructure continues to be restricted due to California's poor fiscal condition and other interests competing for available funds.

The following topics were addressed during the Symposium by various California agency officials and leaders:

- California Water Bills - Impacts on the Delta and State
- California Water Bond SB2 - Funding for the Water Infrastructure's Future
- Major Levee and Water Projects on the Horizon
- Transportation and American Recovery and Reinvestment Act - Stimulus Package & Funding Initiatives
- California High Speed Rail

Some of the presentations are posted on the Region 9 website. I invite you to visit this site: <http://www.region9.asce.org/Region9InfrastructureSymposium2010.html>

Mark Cowin, newly appointed Director of the Department of Water Resources, gave the keynote address and provided an overview of California water resources. Senator Dave Cogdill, one of the primary authors of the water bonds, provided insight on the bonds.

The American Recovery and Reinvestment Act was signed into law by President Barack Obama on February 17, 2009. Since its enactment, \$130 billion have been spent on construction, although this is merely a drop in the bucket compared to the \$2.2 trillion needed for the next five years as indicated in the 2009 ASCE Infrastructure Report Card. In the Report Card, the Nation's infrastructure received a grade of "D".

It has been reported that a significant number of construction jobs were saved because of the Stimulus Program, although it did not create all the jobs everyone expected. The following statistics were presented on current status of the Recovery Act:

	Highways	Transit
	(\$ Millions)	
Apportioned	2,542	1,105
Obligated	2,415	1,014
Awarded	1,570	NA
Outlays	245	NA

The federal government is proposing a "Stimulus 2" Package. It is anticipated that California funding levels will remain about the same - \$2.56 billion for highway and \$1.06 billion for transit.

Kathy Caldwell, ASCE President-Elect was the luncheon speaker at the Symposium. She talked about ASCE's Vision 2025.

In the evening, a dinner was held for the 2009 Region 9 Awards Winners. Jennifer Epp, Region 9 Governor-at-Large, presented the awards which are also listed on the Region 9 website. (<http://region9.asce.org/awards.html>)

We would like to acknowledge the support of the following Symposium sponsors. Their participation is greatly appreciated:

- ACEC California, Los Angeles County Chapter
- APWA Southern California Chapter
- Akel Engineering Group, Inc.
- Diaz-Yourman & Associates
- Kimley-Horn and Associates, Inc.
- RBF Consulting
- SA Associates
- Simon Wong Engineering
- URS

Members of the Fourth California Infrastructure Symposium Committee that helped present the Symposium are:

- Shahnawaz Ahmad, Chair, Los Angeles Section, SA Associates
- Lori K. Campbell, Region 9 Administrator, LKC Consulting
- Jay H. Higgins, Los Angeles Section, URS Corporation
- Karl E. Longley, San Francisco Section, California Water Institute, California State University, Fresno
- Richard Markuson, Region 9, Pacific Advocacy Group
- Patricia McColl, San Diego Section, David Evans and Associates
- Mark R. Norton, Los Angeles Section, Santa Ana Watershed Project Authority
- Frank Sana, San Francisco Section, VSCE
- Larry J. Smith, Sacramento Section, U.S. Army Corps of Engineers
- Charles R. Spinks, Sacramento Section, Kimley-Horn and Associates, Inc.
- Nader Tamannaie, Sacramento Section, California Infrastructure Consultancy

Mark your calendars for next year's events - California Infrastructure Symposium, Region 9 Awards Dinner, and Legislative Day - which will be held the third week of February, 2011.

## California Legislative News from the Region 9 Board of Governors continued from page 3

sions for private and public works. It becomes operative January 1, 2012 to allow the industry and homeowners time to become familiar with the new organization of the law and updates. Existing law allows licensed architects, engineers, and surveyors to claim a "design professionals lien" for pre-commencement design services provided for a work of improvement. Services that these design professionals provide are also governed by selected provisions of the mechanics lien statute. (Sections 3081.1 to 3081.10). SB 189 adds licensed landscape architects to the identified list of design professionals.

Region 9 supports passage and is monitoring activities related to the Safe, Clean and Reliable Drinking Supply Water Act of 2010 (also known as the "Water Bond"). ASCE will be working to inform members and voters on the facts about the Bond which will be on the November 2010 ballot. If passed, it will provide \$11.14 Billion in funding for Statewide Water System Operational Improvement, Delta Sustainability, Conservation and Watershed Protection, Water Supply Reliability, Water Recycling and Water Conservation, Groundwater Protection and Water Quality, and Drought Relief.



# 11th Annual 2010 Streets & Technology Conference

*Presented by: So. Ca. Chapter of American Public Works Association*

**Date: Wednesday, April 28, 2010**

**8:00 a.m. – 3:30 p.m.**

**Carson Community Center**

**801 East Carson Street**

**Carson, CA**

**REGISTER  
NOW!!**

Don't miss out on the latest developments in public infrastructure as it relates to design, operations, maintenance and funding. Again this year, **outdoor equipment displays**. There will be a booth to sign up volunteers for the 2012 Congress. Don't miss out on this great opportunity.

## **Our topics are as follows:**

➤ Right-of-way Management	➤ Recession Strategies (Reducing Budgets, Retaining Staff)
➤ Pervious Concrete as a Cost-Saving Storm Water Management Tool	➤ Ground Penetrating Radar Use & Application
➤ Sign Reflectivity	➤ Pavement/Warm Mix Asphalt
➤ Laser Scan Surveying	➤ Using Bio/Infiltration to Improve Storm H <sub>2</sub> O Management
➤ Wastewater/Storm Drain Cleaning Methods	➤ PS&E
➤ Pavement Maintenance & Technologies	➤ Trenchless technologies for large diameter sewer and storm drains, pipeline rehabilitation
➤ Training Supervisors/Core Competencies for PW Managers	➤ Storm Water (H&H and New Quality Regulations)
➤ Alternative Project Delivery (in-house vs. contract out)	<b>Fees</b> APWA Member Price                      \$145.00 Non-Member Price                      \$165.00 (Cost includes notebook and lunch)

## **Lunch Topic: Measure R (I-405 Design/Build)**

**If you are interested in being an exhibitor,  
please contact:**

**David Stuetzel at ((714) 665-4518 or email  
at [DStuetzel@hfinc.com](mailto:DStuetzel@hfinc.com).**

**For registration information,  
go to [www.southernca.apwa.net](http://www.southernca.apwa.net) or contact:  
Sylvia Robles at (714) 647-5674 or email at  
[srobles@santa-ana.org](mailto:srobles@santa-ana.org).**



In the Los Angeles Section, we have many Local Historic Civil Engineering Landmarks that have received this designation over the long history of the Section since its inception in 1913. I thought I would point out some of the landmarks I found interesting that are right here in our own backyard.

These are just a few examples of the many interesting projects within the Section boundaries. Should you have a project in your area you feel is worthy of consideration to be designated a local historic civil engineering landmark, please contact Andy Machen at [andrew-machen@rivsanc.com](mailto:andrew-machen@rivsanc.com) or Clark Adams at [cbadams@jlpatterson.com](mailto:cbadams@jlpatterson.com), Co-chairs of the Section's History and Heritage Committee. Keep in mind that the project must be at least fifty years old, have historical significance, as well as unique features and characteristics that set it apart. For a full list of criteria, please visit [www.asce.org](http://www.asce.org), click on "History and Heritage", "Historic Civil Engineering Landmark Program", "Nomination Package".

To view more local historical civil engineering landmarks go to [www.ascelasection.org](http://www.ascelasection.org) and click on the "LA Section" tab, and "Civil Engineering Landmarks" on the drop down menu. Pick out your favorites and take a ride. You may want to bring along one of your civil engineering friends especially if they are visiting from out of town. I'll let you decide if you want to bring along your children. Enjoy your newsletter.

*The heritage of the past  
is the seed that brings  
forth the harvest  
of the future.*



Wendell Phillips

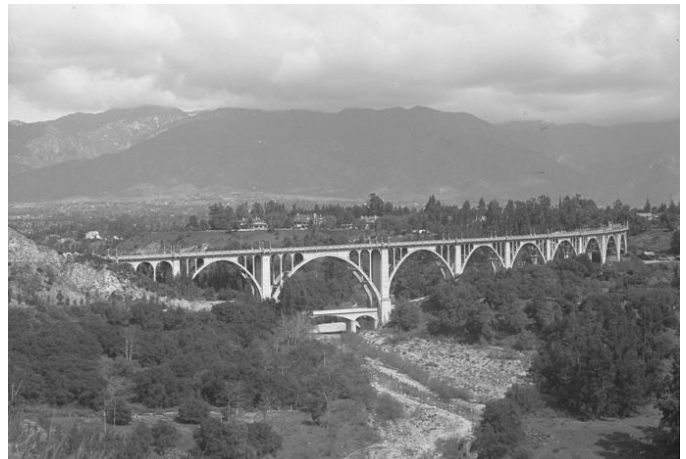
If you have any questions and comments please feel free to send me an e-mail at [jay\\_higgins@urscorp.com](mailto:jay_higgins@urscorp.com). Articles for the Newsletter may be submitted to the Newsletter Editor, Cris Liban, at [LibanE@metro.net](mailto:LibanE@metro.net).



Tehachapi Pass Railroad Loop

National Historic Civil Engineering Landmark

The pass connects the San Joaquin Valley to the Mojave Desert. Tehachapi Loop is located approximately 18 miles west of the pass off State Highway 58 (Coordinates: 35°12.05' N, 118°32.22' W)



Colorado Street Bridge

National Historic Civil Engineering Landmark

Located near S. Orange Grove Boulevard and W. Colorado Boulevard in Pasadena, California (Coordinates: 34°8.68'N, 118°9.82'W)



The "Ridge Route" California Historic Civil Engineering Landmark Plaque dedication ceremony held on October 20, 2009.

The plaque is located in the parking lot of the Vista del Largo Visitor Center off I-5 near Pyramid Lake



Morris Dam

Local Historic Civil Engineering Landmark  
Located in the San Gabriel River Canyon

## DISASTER TRAINING

Classes are being organized for volunteers to help in the event of a major disaster under the auspicious of the State of California Emergency Management Agency (Cal EMA). Classes will be held in ASCE Branch areas when there are sufficient requests. Qualified individuals are California Registered Civil, Structural, Geotechnical, Certified engineering Geologists, or Architects. If you are interested in attending a class, or are interested in arranging a class, please contact the ASCE Disaster Preparedness Committee Chairman.

There is no charge for the class. The class lasts 4 or 5 hours  
The Class can commence as early as 8 AM or after work.  
Monday through Friday or on Saturday

Classes will be given for VOLUNTEERS from professional organizations to assess damage, and COORDINATORS from City or County to direct Volunteers for their area. Coordinators may act as Volunteers outside of their area of expertise.

To register for the class submit your name along with your telephone number and e-mail address. You will be contacted when 10 or more request a class. The maximum number in the class should not exceed 20.

If your Branch, or Firm would like to offer the use of its facilities for a class, please register and provide the name of contact person, phone, and E-mail. You will be contacted to make arrangements.

Thank you for your support.  
Jack W. Rolston, Chair 818-903-5225 cell  
818-345-9199 ph • 818-345-5283 fx  
ascedisaster@earthlink.net



### 2nd International Symposium on Cone Penetration Testing

May 9 - 11, 2010 • Huntington Beach, California  
Hyatt Regency Resort and Spa

**THEME:** The solution to geotechnical and geo-environmental problems using the Cone Penetration Test (CPT).

#### CPT' 10 OFFERS:

- An exchange of practical experience and applications of research results with industry professionals, academics, and researchers.
- Over 120 papers from 35 different countries.
- 9 regional reports describing worldwide CPT use.
- 4 keynote lectures by world experts on the CPT.
- Panel-lead discussion sessions and poster presentations.
- CPT technology and software exhibits (both indoor & outdoor).
- Restricted event size to facilitate open discussion sessions.

*Early registration is strongly encouraged to guarantee your space at this must-attend event.*

**REGISTER ON-LINE AT: [www.cpt10.com](http://www.cpt10.com)**

COMPLETE EVENT DETAILS ARE AVAILABLE ON OUR WEBSITE. THE CPT' 10 ORGANIZING COMMITTEE CAN BE REACHED AT: [info@cpt10.com](mailto:info@cpt10.com)





**American Society of Civil Engineers (ASCE)**  
**6<sup>th</sup> International Engineering  
 and Construction Conference**  
**Advances in Affordable Housing  
 & Green Construction**  
**Cairo, Egypt-June 28-30, 2010**

**Local Organization Contact Information**

**Prof. Khalid M. ELZahaby**

**Dr. Mohamed A Zaki**

Housing & Building National Research Center

87 El-Tahrir St. Dokki, Giza -Egypt

[www.hbrciecc6.com](http://www.hbrciecc6.com) • [hbrcontact@hbrciecc6.com](mailto:hbrcontact@hbrciecc6.com)

Phone: +20-2-37617102, 37617092 • Fax: +20-2-33351564

## **KPFF CONSULTING ENGINEERS**

KPFF Consulting Engineers seeks motivated and energetic structural engineers. 2+yrs of structural design experience with steel, concrete, masonry and timber desired. B.S., M.S. degree; a P.E. license a plus. Excellent communication and teamwork skills are essential. Substantial growth opportunity for all levels, and the opportunity to work on a wide variety of interesting and challenging projects. Please contact, fax or email resume to the following:

**For Los Angeles:**

Ms. Krystle Tabangura

**KPFF Consulting Engineers**

6080 Center Drive, Ste 300

Los Angeles, CA 90045

Ph: 310- 665-1536

Fx: 310-665-9070

Email: [ktabangura@kpff-la.com](mailto:ktabangura@kpff-la.com)

**For Pasadena:**

Ms. Tamara Kealty

**KPFF Consulting Engineers**

301 N. Lake Avenue, Ste 550

Pasadena, CA 91101

Ph: 626-578-1121

Fx: 626-578-9121

Email: [tkealty@kpff-pas.com](mailto:tkealty@kpff-pas.com)

**[www.kpff.com](http://www.kpff.com)**

## **Semi-Retired Civil Engineer**

Semi-Retired Civil Engineer available for short term/long term commitments. **California P.E. with 40+ years of varied experiences and responsibilities, including claims consulting and expert witness testimony. C.V. and references will be available upon your request.**

**E-mail: [evnel@aol.com](mailto:evnel@aol.com)  
 Cell phone: 323-356-7814**

## **HYDROLOGY/HYDRAULICS SOFTWARE**

- Automatic English-to-Metric Conversion
- Used by Cal Trans, Government Agencies

**WSPGW for Windows**

Water Surface Pressure Gradient,  
FEMA Approved

**Rational/Modified Rational  
Hydrology Methods**

For Los Angeles, Riverside, San  
Bernardino, San Diego, Orange &  
Kern Counties

**Unit Hydrograph Hydrology  
Method, Flood Hydrograph  
Routing, Basin Analysis**

Multi-Day Storm Event Analysis

**Steady-State Hydraulics,  
Street Inlets, Pumps, Etc.**



\* FEMA Approval for WSPGW Only.



**CIVIL DESIGN®**  
Software for Engineers, By Engineers

**Tel 909.885.3806 Fax 909.381.1721 [www.civildesign.com](http://www.civildesign.com)**

**AES Advanced Earth Sciences, Inc.**  
Geotechnical and Environmental Consultants

Kris Kilnani, PE, GE - President  
Dr. Suji Somasundaram, PE, GE - Principal Engineer  
Grant Miller, PG, CEG - Principal Geologist

20 Fairbanks (949) 458-3832  
Suite 178 Fax: (949) 458-1046  
Irvine, CA 92618 Website: www.aesciences.com

**DMJM HARRIS | AECOM**

Ranked #1 in Transportation by ENR magazine, DMJM Harris is always searching for new talent.

For more information on career opportunities, please contact: jane.griffin@dmjmharris.com.

www.dmjmharris.com

**GPI**  
GEOTECHNICAL PROFESSIONALS, INC.

James E. Harris, G.E.  
Byron Konstantinidis, G.E.  
Paul R. Schade, G.E.

5736 Corporate Ave.  
Cypress, California 90630  
(714) 220-2211 Fax (714) 220-2122  
www.gpi-ca.com

**OSBORN K&A**  
Engineering, Inc.

357 N. Sheridan St. 117  
Corona, CA 92880  
Tel: (909) 279-1800  
Fax: (909) 279-4380  
Email: ka@kaengineering.com

- Engineering
- Land Planning
- Surveying

**AEI-CASC**  
CONSULTING  
ENGINEERING OUR FUTURE

CIVIL ENGINEERING  
PLANNING  
ENVIRONMENTAL ENGINEERING  
SURVEYING

CORPORATE OFFICE  
937 S. Via Lata, Suite 500  
Colton, CA 92324  
(909) 783-0101

Offices throughout California  
www.aei-casc.com

**DUDEK** ENGINEERING + ENVIRONMENTAL

Creatively solving water and wastewater resources challenges for municipal agencies.

Plan | Design | Construct | Manage

WWW.DUDEK.COM San Diego | Los Angeles | Riverside  
800.450.1818 Orange | Santa Barbara | Placer

**Geotechnical Stabilization, Inc.**

Amer R. Al-Alusi, P.E.  
President

Chemical Grouting Compaction Grouting  
PressGrout Lenses Grouting

1558 Sterling Court • Escondido, CA 92029-1208  
760/489-6696 • FAX 760/489-6697

**KEHOE TESTING & ENGINEERING**

- Cone Penetration Testing (CPT)
- Direct Push Soil, Water & Vapor Sampling
- Truck Mounted, Track & Ltd. Access Rigs

Soil Testing & Sampling Services  
for Geotechnical & Environmental Consultants

5415 Industrial Drive  
Huntington Beach, CA 92649-1518  
(714) 901-7270 (714) 901-7289 fax

**STEVE KEHOE, P.E.**  
PRESIDENT

**AKEL**  
ENGINEERING GROUP, INC.

Water Resources  
Infrastructure Modeling  
and Master Planning

Tony Akel, P.E.  
Principal

Phone: 559.436.0600  
Fax: 559.436.0622  
Cell: 559.593.5937  
Email: takel@akeleng.com

7075 N. Howard St. Suite 102  
Fresno, California 93720

www.akeleng.com

**Earth Mechanics, Inc.**

Geotechnical and Earthquake Engineering

Foundation Design  
Seismic Evaluation  
Soil-Structure Interaction  
Field Investigation and Laboratory Testing  
Grading and Foundation Inspections

www.earthmech.com

Fountain Valley Los Angeles San Bernardino Oakland San Diego  
(714) 751-3826 (310) 519-1197 (909) 890-1551 (510) 562-8833 (760) 736-8222

**GREGG**

Phone: (562) 427-6899  
Fax: (562) 427-3314  
Email: info@greggdrilling.com  
Web Site: www.greggdrilling.com

**GREGG DRILLING & TESTING, INC.**

- ENVIRONMENTAL and GEOTECHNICAL DRILLING
- WELL INSTALLATION
- CONE PENETRATION TESTING

2726 WALNUT AVE. • SIGNAL HILL, CA 90755

**KRIEGER & STEWART** INCORPORATED

ENGINEERING CONSULTANTS

- WATER
- WASTEWATER
- RECYCLED WATER
- STORM WATER

Riverside, CA • (951) 684-6900  
www.kriegerandstewart.com

www.amecgeomatrixinc.com

**amec**  
Geomatrix

James J. Weaver, PE, GE  
(949) 642-0245 - office  
(949) 642-4474 - fax

510 Superior Avenue  
Suite 200  
Newport Beach, California  
USA 92663-3627

- Environmental Science and Engineering
- Geotechnical Engineering
- Earthquake-Related Services
- Air Toxics and Health Risk Assessment

**EARTH SYSTEMS**

Geotechnical Engineering  
Engineering Geology  
Environmental Consulting  
Materials Testing & Inspections

Offices throughout California  
Los Angeles Area Office (818) 901-8075  
www.earthsystems.com

**GROUP**

GEOTECHNICAL ENGINEERING  
MATERIALS TESTING & INSPECTION

Serving Southern California since 1986

Michael Reader, G.E.  
Principal Engineer

Tom Swank, G.E.  
Principal Engineer

Group Delta Consultants, Inc.  
Los Angeles County: (310) 320-5100  
Orange County: (949) 609-1020  
San Diego County: (619) 524-1500  
www.GroupDelta.com

**Leighton Consulting, Inc.**

866-LEIGHTON

Thomas C. Benson, Jr., PE, GE, REA I | President and CEO

www.leightongroup.com

Geotechnical | Environmental | Testing and Inspection

**Cannon**  
ENGINEERING • PLANNING • CONSTRUCTION

Public Infrastructure; Land Development;  
Education; Energy; Survey & Mapping;  
Aerospace/Defense

P 805.544.7407  
www.CannonCorp.us

**FUSCOE**  
ENGINEERING

www.fuscoec.com  
949.471.1960

- land development
- entitlement services
- survey & mapping
- water quality assurance
- eco-adaptive design
- groundwater services
- environmental engineering
- GIS & CADD graphics

full circle thinking

Irvine • San Diego • Inland Empire • Palm Springs

**Hall & Foreman, Inc.**

Engineering • Surveying • Planning • Landscape Architecture

visit us online for job listings at  
www.hfinc.com

800.544.2114

Offices throughout Southern California including Irvine, Rancho Cucamonga, Santa Clarita, Temecula, Victorville, and Woodland Hills

**LGC**

**Geotechnical Companies, Inc.**

Website: www.lgcgeo.com

- LGC COASTAL (Orange County): (949) 369-6141
- LGC INLAND (Riverside County): (951) 461-1919
- LGC VALLEY (Ventura/LA Counties): (805) 579-3434

**Converse Consultants**  
Geotechnical Engineering  
Environmental & Groundwater Science  
Inspection & Testing Services

Monrovia Office (626) 930-1200 Costa Mesa Office (714) 444-9660  
Fax (626) 930-1212 Fax (714) 444-9640

Redlands Office (909) 796-0544 Sacramento Office (916) 331-5444  
Fax (909) 796-7675 Fax (916) 331-6444

www.converseconsultants.com

**GENTERRA Consultants, Inc.**  
Engineering & Environmental Services

Irvine • Oxnard • San Diego • Corona • Roseville

Joseph J. Kulikowski, PE, GE  
Founder, President & Principal Engineer

15375 Barranca Pkwy • Suite K-102 • Irvine, CA 92618  
Phone (949) 753-8766 • Fax (949) 753-8887  
Email: joekul@genterra.com • Web Site: www.genterra.com

**HDR**

ONE COMPANY | Many Solutions™

SERVICES:  
Water/Wastewater • Transportation  
Environmental • Construction Management

801 So. Grand Avenue, Suite 500, Los Angeles, CA 90017  
213.239.5800 www.hdrinc.com

**LIN Consulting, Inc.**

Traffic, Civil and Electrical Consulting Engineers

William Sun, P.E., T.E.  
Senior Project Manager

21660 E. Copley Drive, #270, Diamond Bar, CA 91765-4173  
Tel (909) 396-6850 ext. 105 • Fax (909) 396-8150  
E-mail: wsun@linconsulting.com

www.dcacivileng.com

**DCA CIVIL ENGINEERING GROUP**

SURVEYING • MAPPING • LAND PLANNING

(310) 327-0018  
FAX (310) 327-0175

**Geomatrix**

- Environmental Science and Engineering
- Geotechnical Engineering
- Earthquake-Related Services
- Air Toxics and Health Risk Assessment

James J. Weaver, P.E., G.E.

510 Superior Avenue, Suite 200 Newport Beach, CA 92663  
(949) 642-0245 - office (949) 642-4474 - fax

**HESS ENGINEERING INC**  
Structural Engineers

Richard L. Hess, S.E., SECB, FASCE  
President

www.HessEng.com

3347 Cerritos Avenue • Los Alamitos, CA 90720-2105  
(562) 799-9787 • FAX (562) 799-4973 • Cell (310) 717-4916

**LaBelle • Marvin**  
PAVEMENT ANALYSIS, DESIGN, TESTING  
& INSPECTION SINCE 1969

Steven R. Marvin, P.E.  
President

2700 S. Grand Ave.  
Santa Ana, CA 92705  
Ph (714) 546-3468  
Fax (714) 546-5841  
smarvin@labellemarvin.com

www.labellemarvin.com

**DIAZ • YOURMAN**  
& ASSOCIATES

Christopher M. Diaz, P.E.  
Principal

**Geotechnical Services**

1616 East 17th Street, Santa Ana, CA 92705-9509  
Tel. (714) 245-2922 • Fax (714) 245-2950 • Mobile (714) 412-2093  
chris@diazyourman.com www.diazyourman.com

**GeoPentech**  
Geotechnical & Geoscience Consultants

- \* Geotechnical Engineering
- \* Geo-Earthquake Engineering
- \* Seismic Hazards Evaluation
- \* Soil Dynamics/Vibrations
- \* Engineering Geology
- \* Hydrogeology
- \* Seismic Geology
- \* Forensic Studies

525 N. Cabrillo Park Drive, Suite 280  
Santa Ana, California 92701  
Phone: (714) 796-9100; Fax: (714) 796-9191  
Web Site: www.geopentech.com

**JENSEN DESIGN & SURVEY, INC.**

1672 Donlon Street  
Ventura, California 93003

Local 805 654 6977  
FAX 805 654 6979  
State 800 676 1916

“Designing for the Future”

The leader in civil engineering and surveying providing professional state-of-the-art services, commitment to excellence, and timely responsiveness.

Engineers Planners Surveyors

**MACTEC**

GEOTECHNICAL • ENVIRONMENTAL • HAZARDOUS MATERIALS • CMT

Perry A. Mallon, G.E.  
Senior Vice President  
mallon@maectec.com

Marshall Law, Ph.D., G.E.  
Senior Principal / Vice President  
mlaw@maectec.com

Martin B. Hudson, Ph.D., G.E.  
Chief Engineer  
mhudson@maectec.com

Hedy Abadi, Ph.D., P.E.  
Director of Environmental Services  
huda@maectec.com

Edward C. Truax, P.E.  
Principal Materials Engineer  
etrux@maectec.com

5628 E. Slouson Avenue • Los Angeles, California 90040-2922  
323.889.5300 • fax 323.721.6700 • www.mactec.com



**Noise & Air Studies**  
All Your Noise and Air Assessment Needs Since 1981

**Mestre Greve Associates**  
Contacts: Matt Jones, P.E.  
Fred Greve, P.E.

27812 El Lazo Road  
Laguna Niguel, CA 92677  
Tel: (949) 349-0671  
www.mga.com

*Studies for EIRs and EISs  
Caltrans/FHWA Assessments  
Noise Ordinance Compliance  
Air Toxics/Health Risk Assessments  
Noise Elements*

**The PRESSURE GROUT COMPANY**

**Steven C. Chandler**  
Branch Manager

1975 National Avenue  
Hayward, CA 94545-1709  
510-887-2244  
www.pressuregrout.com • e-mail: pgs@pressuregrout.com

1330 W. Gaylord Street  
Long Beach, CA 90813-1321  
562-432-4100

**VA CONSULTING**

**Max Vahid, P.E.**  
President and CEO  
maxvahid@vaconsultinginc.com  
Tel: 949.474.1400 Fax: 949.261.8482

Engineering Services in:  
Flood Control | Drainage | Water Quality  
Potable Water | Recycled Water | Wastewater  
Transportation | Traffic | Plan Checking  
Structural | Land-Use Planning | Site Development  
Surveying | Construction Management

Offices in: Irvine - Corona - Palm Desert

**WALLACE GROUP**

805 544-4011  
www.wallacegroup.us

CIVIL ENGINEERING  
CONSTRUCTION MANAGEMENT  
LANDSCAPE ARCHITECTURE  
MECHANICAL ENGINEERING  
PLANNING  
PUBLIC WORKS ADMINISTRATION  
SURVEYING / GIS SOLUTIONS  
WATER RESOURCES

**BEST FIRMS TO WORK FOR  
CE NEWS • TOP 50 • 2007**

**NMG**  
Geotechnical, inc.

**Hayim Ninyo  
Ted Miyake**

17991 Fitch, Irvine, CA 92614  
Phone (949) 442-2442 Fax (949) 476-8322  
E-Mail: hninyo@nmgeotechnical.com  
www.nmgeotechnical.com

**PSOMAS**

Land Development GIS  
Surveying & Mapping Water & Wastewater  
Construction Management Transportation  
Natural Resources Special District Financing

California | Colorado | Arizona | Utah | Nevada | Mexico  
www.psomas.com

**NORRIS-REPKE**  
Engineers & Land Surveyors

Capital Improvement Design  
City Engineering  
Land Surveying & GIS Services  
Construction Management  
Water and Sewer  
Building & Safety  
Engineering Software

TEL: 714-973-2230  
FAX: 714-973-2263  
www.norrisrepke.com  
400 N. Tustin Avenue, Suite 230, Santa Ana, CA 92705

**RBF CONSULTING** PLANNING • DESIGN • CONSTRUCTION

Providing innovative, timely and cost effective solutions to today's design challenges through personalized client service **www.RBF.com**

Offices located throughout California, Arizona and Nevada • 800-479-3808

**PACE**  
PACIFIC ADVANCED  
CIVIL ENGINEERING, INC.

Innovative Water Resource  
Design Solutions  
in Partnership with Nature

- Stormwater Management
- Wastewater / Potable Water
- Lakes / Water Features

www.p-a-c-e.com  
17520 Newhope St., Suite 200, Fountain Valley, CA 92708  
Main: 714.481.7300 Fax: 714.481.7299

P: (805) 543-1794 | www.rmdesign.com

**rrmdesigngroup**

creating environments people enjoy®

Community | Civic & Public Safety | Education | Recreation | Urban  
architects | engineers | landscape architects | planners | surveyors

**PB**  
100 YEARS

**Parsons Brinckerhoff**

444 South Flower Street  
Suite 3700  
Los Angeles, CA 90071  
Direct: 213-362-9475  
Fax: 213-362-9480  
Givens@pbworld.com

**Jerry M. Givens**  
Senior Vice President &  
Local Business Executive

Registered to ISO 9001  
File No. A8115

**SA ASSOCIATES**

**Shahnawaz Ahmad**  
CONSULTING ENGINEERS

Los Angeles County:  
1130 W. Huntington Drive  
Unit 12, Arcadia, CA 91007  
Tel 626.821.3456  
Fax 626.445.1461  
Mobile 626.826.3456 • e-mail: saahmad@saassociates.net

Orange County:  
1661 N. Raymond Avenue  
Suite 100, Anaheim, CA 92801  
Tel 714.871.9083  
Fax 714.871.3652

**Penfield & Smith**  
Engineering Tomorrow - Today

Santa Barbara Corporate HQ  
(805) 963-9532

Ventura County Regional Office  
(805) 981-0706

Central Coast Regional Office  
(805) 925-2345

Antelope Valley Regional Office  
(661) 945-7592

- Civil Engineering
- Surveying & Mapping
- Land Use Planning
- Construction Management & Inspection
- Traffic & Transportation Engineering
- Transportation Planning
- Structures Engineering
- Geographic Information Systems

www.penfieldsmith.com

Civil • Environmental • Water Resources  
Surveying • Construction Management • Program Management

**TKE ENGINEERING, INC.**

4446 Central Avenue • Riverside California 92506  
(951) 680-0440 • Fax (951) 680-0490  
www.tkeengineering.com

**PETRA**  
past + present + future

**Geologists  
Geotechnical Engineers  
Environmental Scientists**

888-243-6100

**TWINING LABORATORIES**  
OF SOUTHERN CALIFORNIA

Debanik Chaudhuri  
Chief Geotechnical Engineer  
562.426.3355 phone  
562.426.6424 fax  
562.355.8635 cell  
dchaudhuri@twininglabs.com  
www.twininglabs.com

2883 East Spring Street  
Suite 300  
Long Beach, CA 90806

Long Beach • San Bernardino • San Diego • Ventura • Sacramento

**PERLITER & INGALSBE**  
CONSULTING ENGINEERS

Engineering Investigations, Designs  
and Construction Services for:

- Potable Water
- Recycled Water
- Wastewater
- Storm Drainage

(626) 398-9111

2369 Lincoln Avenue, Altadena, California 91001  
Facsimile: (626) 398-9115 Website: www.P-and-I.com

**URS**

**Garry Lay, PE, GE  
Farid Motamed, PE, GE**

2020 East First Street  
Suite 400  
Santa Ana, CA 92705  
Tel: 714.835.6886  
Fax: 714.973.4062

915 Wilshire Boulevard  
Suite 700  
Los Angeles, CA 90017  
Tel: 213.996.2200  
Fax: 213.996.2374

www.urscorp.com

## MATERIALS SUBMISSION INFORMATION

If you'd like to have your business card or company information listed in the Professional Directory, please contact **Lorena Arce** at **(562) 448-4526** or email her at **lorena.arce@hilti.com** for rates and deadlines.

All graphic materials submitted for use in this newsletter should have all fonts outlined, and links included; .eps files preferred. Other formats are: InDesign CS2, Adobe Illustrator CS2; additional acceptable file formats are: .jpg, .tif and .pdf files. Images embedded in Microsoft Word documents should be sent separately, at a minimum resolution of 150 dpi at the display size desired. Collected files, including links and fonts, should be compressed and emailed, or sent on zip disk (provide return address). Business cards can be submitted electronically as well, or send clean, crisp, b&w laser print, unfolded.



### HYDROLOGY/HYDRAULICS/ENVIRONMENTAL SOFTWARE

## ADVANCED ENGINEERING SOFTWARE

P.O. Box 4962

GARDEN GROVE, CA 92842-4962

TEL/FAX: (714) 780-8990

TO REVIEW AES PROGRAM FEATURES AND CAPABILITIES, VISIT:

<http://www.advancedengineeringsoftware.com>

- Software written/supported by **AUTHORS OF THE HYDROLOGY MANUALS**.
- Software used throughout Southern California since 1980 by private and government agency engineers.
- Used to develop 55 City-Wide and County-Wide Master Plans of Drainage throughout California.

#### AES Program Developers & Support:

Theodore V. Hromadka II, Ph.D., Ph.D., P.E., P.H., LG, *Professor Emeritus, CSUF*; Johannes J. DeVries, Ph.D., P.E., *Faculty, UC Davis*; Howard H. Chang, Ph.D., P.E., *Professor, SDSU*; Paolo Zanetti, Ph.D., QEP, *President, EnviroCOMP*; Robert J. Whitley, Ph.D., *Professor Emeritus, UC Irvine*; Carlos Brebbia, Ph.D., *Director, Wessex Institute of Technology*; Gary Guymon, Ph.D., P.E., *Professor Emeritus, UC Irvine*.

**POSTMASTER: THIS CONTAINS TIME-SENSITIVE MATERIALS.**  
**PLEASE DELIVER PROMPTLY.**



This newsletter is printed on  
Forest Stewardship Council  
(FSC)-certified paper using  
soy-based ink.

***Please contact ASCE Membership at  
1-800-548-ASCE for any address changes.***

## ASCE OFFICERS AND DIRECTORS OF THE LOS ANGELES SECTION, FY 2009-2010

President	Jay H Higgins, P.E.	URS Corporation	(818) 406-4896	jay_higgins@urscorp.com
President-Elect	Greg Heiertz, P.E.	Irvine Ranch Water District	(949) 453-5560	heiertz@irwd.com
Past President	Don Sepulveda, P.E.	HNTB	(310) 846-1813	dsepulveda@HNTB.com
Secretary	Janice Horcasitas, P.E.	City of Bakersfield	(661) 326-3607	jhorcasi@bakersfieldcity.us
Treasurer	Gary Gilbert, P.E.	Diaz Yourman & Associates	(714) 245-2920	gary@diazyourman.com
Vice-President Student Activities	Karen Sepulveda	Bob Hope Airport	(818) 309-9649	kar@sepulvedas.net
Vice-President Technical Groups	Andy Machen, P.E.	Caltrans District 8	(909) 379-5744	andy_machen@dot.ca.gov
Desert Area	Clarence Martin, P.E.	City of L.A. Department of Water and Power	(760) 873-0342	Clarence.Martin@ladwp.com
Metropolitan Los Angeles	Serge Haddad, P.E.	City of L.A. Department of Water and Power	(213) 367-8774	Serge.Haddad@ladwp.com
Orange County Branch	Katherine Shinkai, P.E.	LPA	(949) 701-4033	katherine.shinkai@gmail.com
San Bernardino/Riverside Counties	Brian Wolfe, P.E.	City of Redlands	(909) 800-0178	bwolfe@cityofredlands.org
San Luis Obispo	Jeff Spannbauer, P.E.	Cannon Associates	(805) 544-7407	jeffs@cannonassociates.us
Santa Barbara/Ventura Counties	Paul Callaway, P.E.	Green Mountain Engineering	(805) 654-2019	Paul.Callaway@ventura.org
Southern San Joaquin	Robin Dickerson, P.E.	RSD Civil Engineering	(661) 342-8787	rsd.civileng@gmail.com
Younger Member Forum	Marlon Calderon, P.E.	City of Los Angeles	(213) 473-6233	Marlon.calderon@lacity.org
Life Member Forum	Larry Lewis, P.E.	Retired/City of Los Angeles	(562) 927-2088	m13lewis@aol.com
Region 9 Governor	Shahnawaz, Ahmad, P.E.	SA Associates	(626) 821-3456	sahmad@saassociates.net

## NEWSLETTER INFORMATION

### *Publisher*

ASCE LA Section  
Gayle Stewart  
1405 Warner Ave., Suite B  
Tustin, CA 92780  
Phone (714) 258-8306  
Fax (714) 258-8391  
E-mail: GStewart@associationplanet.com

### *Editor*

Dr. Cris B. Liban, P.E.  
LACMTA  
One Gateway Plaza  
Mail Stop 99-17-2  
Los Angeles, CA 90012  
Phone (213) 922-2471  
FAX (213) 922-6875  
E-mail: cliban@UCLAumni.net  
Typesetting, Layout & Printing: The Center Quickprint



Please send all copy to the Editor by  
the first of the month preceding publication.

### *Identification Statement*

ASCE Newsletter, (ISSN 0273-6233)  
is published monthly by ASCE,  
Los Angeles Section, 1405 Warner Ave.  
Tustin, California 92780. Subscription price  
included in Section dues of \$45.

### *Circulation*

Circulated monthly (except for a joint  
July/August issue) to the 5,000 subscribing  
members of the Los Angeles Section, ASCE.

### *Advertising Rates*

EMPLOYMENT ADS	DISPLAY ADS
\$75/column inch	1/8 page \$150
	1/4 page \$250
	1/2 page \$415
	1 page \$690

### PROFESSIONAL DIRECTORY

\$350 per business card for a full year  
(Additional fees may be applied for typesetting.  
Please call for information.)

### POSITION WANTED ADS

No cost to L.A. Section members.

For more advertising and billing information,  
please contact Lorena Arce, P.E., at  
(562) 448-4526 or lorena.arce@hilti.com

National ASCE (800) 548-2723 (ASCE)  
Access National ASCE at: [www.asce.org](http://www.asce.org)  
L.A. Section web site at: [www.ascelasection.org](http://www.ascelasection.org)