

Los Angeles Section

Monthly: Est. 1913

ORANGE / SAN_BERNARDINO/RIVERSIDE / SAN_LUIS_OBISPO / SANTA_BARBARA/VENTURA / DESERT /
SOUTHERN SAN_JOAQUIN / METROPOLITAN LOS ANGELES

“The real measure of your wealth is how much you’d be worth if you lost all your money.”

— Unknown Author

GUEST ARTICLE

Don Sepulveda, P.E.

ASCE LA Section Vice-President, Student Activities

Steel Bridge National Competition Comes to Northridge



Each year the American Society of Civil Engineers (ASCE) and the American Institute of Steel Construction (AISC) co-sponsor the Student Steel Bridge Competition. In this competition ASCE student chapters from around the country and Canada design, fabricate, construct, and load test a 1:10 scale model steel bridge. The bridges are judged on construction speed, efficiency, and deflection under load.

The problem is simple: the students respond to an RFP for a Design/Build project in which they are to replace an existing steel bridge. They are required to design a bridge that is constructable within the given site conditions as well as adaptable to the existing site location. Each year the National Rules Committee develops rules that provide enough latitude

for innovation while being specific enough for design and construction. The students are required to follow guidelines regarding member dimensions and weight as well as construction techniques. Each year brings unique and sometimes unusual solutions to the design problem.

During the process of designing and fabricating the bridge, students are presented with management, design, and leadership challenges similar to those that they will see when they enter the engineering world. Class curriculums teach various methods of $F=MA$ with minimum design. In this competition, students take those basic engineering skills and apply them to a “real world” situation where they have to think not only of the theory of the development of the bridge, but the practice of constructing the finished product. In many cases, this is the student’s first experience with “hands-on” application of theory.

In addition to the constructability challenges that the students face are the management challenges. The students must analyze their design in relation to their budget. They must weigh the factors of going with a thinner wall material or a different steel strength to the overall goals of the design and how this will work with fabrication and construction.

Each year, student chapters compete regionally for the opportunity to be invited to the big show, the Nationals. This is where forty-five of the best bridges from around the United States and Canada compete for the chance to prove themselves the best of the best. These are the students that have gone above and beyond the responsibilities of the normal engineering curriculum and have excelled. These students give hundreds of hours of their free time to the development of the bridge. These are the leaders of the future.

continued on page 5

VOL_XLVII NO_2

In This Issue page

GUEST MESSAGE	1
EDITORIAL	2
CAL. INFRASTRUCTURE SYMPOSIUM	2
ANNOUNCEMENTS	4~7
EMPLOYMENT OPPORTUNITIES	8~11
PROFESSIONAL DIRECTORY	12~13

Reminder:

Copy deadline for the March, 2007 issue is February 1, 2007; copy deadline for April, 2007 issue is March 1, 2007.



www.ascelasection.org

Engineer's Month

The month of February has been the traditional month of the Engineer. Yes, it is our month. We celebrate this time not to pat ourselves on the back for jobs that are done right, but more so to reflect on what this profession has contributed and continues to contribute to our society. This is not a month to be shy. As engineers, we have a lot to be proud of. Here are some highlights outlined in this month's newsletter.

Our Section President John Morris has relinquished his space (and face) this month to Don Sepulveda, P.E. for a very important message regarding the National Student Steel Bridge competition. This prestigious event will be held this year at Cal State Northridge and brings together engineering students from across the nation to showcase their design talents.

Some of our members are also traveling to Sacramento this month to participate in the California Infrastructure Symposium. This is an excellent opportunity for our members to discuss specific issues with our state legislators as well as creating the high visibility presence of our profession.

Towards the end of this month, the Los Angeles Section along with other Sections of ASCE throughout America celebrate Engineer's Week, our week. Engineer's Week is not a geekfest. Not even close. I am a previous participant of many Engineer's Week events in the past. We are reminded through the various activities during that time of the importance of Civil Engineering in our society. As I mentioned above, this is the one week of every year that we have to stand side by side with others to proclaim pride in our profession.

The rest of our newsletter has an excellent menu of available or just opened up engineering careers and solicitation for services. Please check out these opportunities.

Finally, let's not forget the Life Member Brunch that will be held in March. For me, that is the penultimate event of any given year. Where else can you see local engineering icons, career inspirations, and great food at the same location. The flyer for this event is inside.

Sit back, relax, enjoy this issue of your newsletter. *Have a safe Engineer's Month!*

- Dr. Cris B. Liban, P.E.

A Great Idea From the Life Members

The ASCE Life Members' Public Image Committee request that members take their (to be discarded) Civil Engineering magazines to their doctor's office or barber shop and merge them with the stack of magazines. We feel that this will be an effective way to make the general public more aware of what civil engineers do.

California Infrastructure Symposium

February 5, 2007

at

**Sheraton Grand Sacramento
1320 J Street • Sacramento, CA 95814
(916) 341-3603**

Presented by:

American Society of Civil Engineers, Region 9

Agenda

8:00 – 9:00 a.m. **Registration/Continental Breakfast**

9:00 – 9:15 a.m. **Welcome-John Pulver, ASCE's Region 9 Director**

Morning Session-Water Issues in California

The Disaster Preparedness and Flood Prevention Bond Act of 2006 and the Water Quality, Safety and Supply, Flood Control, Natural Resources Protection, Park Improvements Bond of 2006 (Proposition 1E and 84), was approved by the voters on November 7, 2006. This Act will provide over \$9 billion and for: Central Valley flood control system repairs and improvements; Delta levee repairs and maintenance; flood control subventions; storm water flood management; flood protection corridors and bypasses; flood plain mapping; water quality; protection of rivers, lakes and streams; flood control; sustainable communities and climate change reduction; protection of beaches, bays, and coastal waters; parks and natural education facilities; forest and wildlife conservation; and statewide water planning. The symposium will provide you with important information on what projects are going to be built, who is going to build them, when they are going to be built, and what you can do to become involved.

9:15 – 9:45 a.m. **Propositions 1E and 84 and Future Water Bonds, Legislature's Role/Vision**

The State will be developing guidelines for implementation of the bond amounts. What will be introduced? Who will be involved in the process? The state is also considering a bond for 2008. What will it include? Will new water storage facilities be constructed including dams? Who will be developing the bond?

Speaker: **Assembly Member Lois Wolk, Chair, Water, Parks, and Wildlife Assembly Committee** (Invited)

9:45 – 10:15 a.m. **Water and Transportation Issues**

What are the Governor's priorities for 2007/2008 for both water and transportation? What is the Governor's plan for funding of flood control and water projects? How could projects be streamlined for sooner delivery?

Speaker: **Jim Bourgart, Deputy Secretary, Transportation and Infrastructure, Governor's Office**

10:15 – 10:45 a.m. **Bay-Delta Issues & Financing Solutions**

Although Proposition 1E will bring funds to reduce the risk of levee failure in the delta region, the funding only begin to address the issues. What are the issues in the delta? What must be done in the delta to ensure that water supplies to the State Water Project and others will continue? How will environmental issues be addressed?

Speaker: **Joseph Grindstaff, Director, Bay Delta Authority**

10:45 – 10:55 a.m. **Break**

10:55 – 12:05 p.m. **Water Issues/Panel Discussion**

What projects will be funded through Proposition 1E and 84, who is going to build them, and when they are going to be built. How will the state distribute funds to other agencies? What does the future hold for water funding in the state?

Moderator:

Mark Norton, Santa Ana Watershed Project Authority and ASCE Los Angeles Section, President-Elect

Panelists:

- **Tam Doduc, Chair, State Water Resources Control Board, (Invited)**
- **Gerald E. Jones, Deputy Director, Water Resources Planning & Management, (Invited)**
- **Kirk Rogers, Director, Mid-Pacific Region, U.S. Bureau of Reclamation, (Invited)**
- **John McMahon, BG, Corps of Engineers, (Invited)**

12:05 – 12:15 a.m. **Water Panel Questions and Answers**

12:15 – 1:30 p.m. **Luncheon and Presentation of Awards**

Speakers:

John Pulver, Region 9 Director
Jennifer Epp, Region 9 Governor

Afternoon Session - Transportation Issues in California

The Highway Safety, Traffic Reduction, Air Quality, and Port Security Bond Act of 2006 (Proposition 1B), was approved by the voters on November 7, 2006. This Act will provide nearly \$20 billion for: Congestion Reduction, Highway and Local Road Improvements, Public Transportation, Goods Movement, Air Quality, Safety and Security. The symposium will provide you with important information on what projects are going to be built, who is going to build them, when they are going to be built, and what you can do to become involved.

1:30 – 2:00 p.m. **Proposition 1B – Legislature's Role/Legislative Vision**

The State will be developing guidelines for implementation of the bond amounts. What will be introduced? Who will be involved in the process?

Proposition 1B has been identified as a significant and crucial first step in the continual investment in our road and public transit infrastructure. If it is a down payment on California's economic survival and quality of life, it will take even greater vision, and funding, to make our transportation system sustainable in the future. What is the Legislature's plan to meet these future infrastructure needs?

Speaker:

Senator Allen Lowenthal, Chair, Senate Transportation and Housing Committee (Invited)

2:00 – 2:30 p.m.

Corridor Mobility Improvement Account – Project Expectations

Proposition 1B includes \$4.5 billion for the Corridor Mobility Improvement Account. These funds are to be administered by the California Transportation Commission (CTC) for performance improvements on the state highway system and major access routes to the state highway system. The CTC competitive project selection criteria will include mobility improvement, project benefit, geographic balance between regions and early delivery. What projects will be funded?

Speaker:

John Barna, Executive Director, California Transportation Commission (Invited)

2:30 – 3:15 p.m.

Transportation Issues for Caltrans – Project Delivery

Of the \$11.25 billion slated for capital improvements in the Bond, Caltrans has the lion's share of the responsibility to deliver projects in a timely and cost effective manner. Already being short staffed, Caltrans must meet all of its current obligations and must

have the new Proposition 1B projects implemented or under construction by December 31, 2012. How will they achieve their goals?

Speakers:

Brian Crane, District Director, Caltrans District 3, Sacramento Area
Doug Failing, District Director, Caltrans District 7, Los Angeles Area (Invited)

3:15 – 3:25 p.m.

Break

3:25 – 5:00 p.m.

Transportation Panel Discussion
Transportation Issues for Cities and Counties – A Fair Share

Although \$1.96 billion has already been targeted for regional delivery of projects, the larger portion of the potential funding requires "mobility benefit in the earliest possible timeframe." The forewarning of a dwindling workforce and escalating construction costs adds more pressure. "Where's Waldo?" Where will we find the design professionals and contractors to get the work done? With higher escalating costs for design and construction, how much actually gets on the ground in infrastructure? Even if they can deliver, will cities and counties get their fair share? Who gets to decide what their fair share really is?

Moderator:

Brent Siemer, P.E., F.ASCE, City Engineer, Eureka and Past President, ASCE San Francisco Section

Panelists:

- **Ann Maher, Deputy Director, Riverside County Transportation Commission (former Caltrans District 8 Director)**
- **Rusty Selix, Executive Director, California Association of Councils of Government**
- **Suzanne Smith, Executive Director, Sonoma County Transit Authority (Invited)**
- **Spencer Clifton, Executive Director, Humboldt County Association of Governments**

5:00 – 5:15 p.m.

Transportation Panel Questions and Answers

5:15 – 5:30 p.m.

Closing Remarks/Raffle

Speaker:

Karl Longley, ASCE Region 9 Director

Fee and Registration Information: [REGISTRATION FOR THE SYMPOSIUM IS DUE JANUARY 29, 2007, AND REGISTRATION FOR THE ROOM AND SYMPOSIUM WAS DUE JANUARY 12, 2007.](#)

Find out the latest
Section & Branch news @
www.ascelasection.org



ASCE Region 9 Infrastructure Summit RESERVATION FORM

To guarantee your reservation, please provide a credit card number in the space provided below. Failure to arrive on that day without notification will result in cancellation, forfeiture of deposit or, one night's charge to your credit card. Please note any changes to the confirmed departure date after check-in will result in a \$75 early departure fee. Reservations may also be made by calling 1-800-325-3535.

PRINT OR TYPE:

Name _____

Address _____

City _____ State _____ Zip _____ Phone _____

Email Address (REQUIRED if you would like confirmation letter): _____

Reservations accepted for February 4 and 5, 2007.

Arrival Date _____

Check in Time is after 3:00 PM

Departure Date _____

Departure time is by 12:00 noon

of rooms _____

of people _____

Additional names on reservation _____

Payment

_____ Visa _____ Master Card _____ American Express _____ Discover

_____ Diner's Club _____ Carte Blanche

Credit Card # _____ Expiration Date _____

Name on Card _____

I authorize the Sheraton Grand Sacramento to charge my account for one night's deposit and all applicable taxes.

Signature _____

Rooms may not be available for check-in until after 3:00 pm.

The Hotel will offer rooms based on Hotel guestroom availability only.

Please check appropriate Rate:

_____ Single Occupancy - 1 person	\$149.00	FAX: 916-341-3600
		or
_____ Double Occupancy - 2 people	\$149.00	EMAIL: andrea.argyilan@sheraton.com
_____ 1 King bed or		
_____ Double beds		
_____ Triple Occupancy	\$174.00	

- Do you require an ADA Compliant Room?

All room rates are quoted exclusive of applicable state and local taxes, which are currently 12% Transient Occupancy Tax, .075% California Tourism Marketing Assessment and \$1.50 Sacramento Tourism Business Improvement District.

Seismic Design Review

for the California Civil P.E. Examination

Instructor: **Steven T. Hiner, MS, SE**FIRST TIME OFFERED IN
SOUTHERN CALIFORNIA

Seismic Design Review course offered in preparation for the April 21, 2007 Special Civil/Seismic Principles portion of the California Civil PE examination.

Days: **Saturdays (2 total)**Dates: **March 31 & April 7, 2007**Time: **8:00 am to 5:00 pm**Location: **Rancho Bernardo (San Diego area)**Cost: **\$350 (includes course workbook)**

Classroom size is limited to 50 attendees. For more information visit www.seismicreview.com

HANDS-ON SEMINAR

April 27, 2007 (1820 E. First Street, Ste 200, Santa Ana)

**Design, Analyses & Optimization of
Offline Retarding Systems using
Basin Analysis Software (B.A.S.)**

Learn how to:

- Identify ideal retarding situations
- Identify risks in retarding
- Analyze online and offline systems (Manually)
- Analyze & design side-weirs (B.A.S.)
- Analyze & design offline basins (B.A.S.)
- Optimize retarding volume and land (B.A.S.)
- Provide environmentally sensitive retarding
- Eliminate downstream scour
- Master B.A.S. through hands-on exercises

B.A.S. license is included with the registration

**For more information, please visit
www.hydraulicsolutions.net**

or email: bas@hydraulicsolutions.net

Steel Bridge National Competition Comes to Northridge

continued from page 1

The 2007 National Competition will be held at California State University, Northridge (CSUN) on May 25 -26. This is appropriate since CSUN was the first school to introduce this competition into the Pacific Southwest Regional Conference in 1993. The students at CSUN have been working hard since last June to develop this competition. This is an honor about which they are excited. The team has been working out all the nuances of hosting 600 to 700 guests, including hotel space, meals, parking, fundraising, and all those little things that come with a competition of this magnitude.

A competition of this sort has a very significant budget. While there is national funding available, it does not come close to meeting the demands of this competition. The students have been raising funds in addition to searching for volunteers. Several sponsors have already committed funds for this event. This is a great chance to see the future of civil engineering in action. If you have any questions, please contact Conference Chair Brett Grunert at brett.grunert@csun.edu or Don Sepulveda at don.sepulveda@dmjmharris.com.

ATTENTION!

**AN ADDRESS CHANGE IS MORE
IMPORTANT THAN YOU THINK!**

**You've got the control
at your fingertips!**

- **Mailing Address**
- **Phone Number**
- **E-Mail Address**

**WWW.ASCE.ORG/MYPROFILE
(800) 548-ASCE (2723)
(703) 295-6300**



The Los Angeles Section

Cordially Invites You and Your Spouse to

Life Member Brunch

March 3, 2007

In Honor of those members who have advanced to Life Member status in the society and in recognition of their career achievements.

Keynote Speaker:

**ASCE National President-Elect,
David G. Mongan, P.E., F.ASCE**

Members & Guests: \$25.00 per person

Table Sponsor: \$250.00 (4 seats for Sponsor & 6 for Honored Life Members)

Reception: 11:00am Brunch: 11:30am Program: 12:30 – 2:00pm

Reservation must be received no later than Friday, February 16.

Monterey Hill Steakhouse

3700 W. Ramona Blvd.
Monterey Park, CA 91754
323-264-8426

For reservations, please send checks to:

ASCE, Los Angeles Section
1405 Warner Avenue
Tustin, CA 92780

-----Return Coupon-----

Return to: ASCE, Los Angeles Section, 1405 Warner Avenue, Tustin, CA 92780

Attn: Christina Lucas Phone: 714-258-8306

Name (for nametag) _____ **Phone ()** _____

Firm _____ **Fax ()** _____

Address _____

City _____ **State** _____ **Zip** _____

Spouse / Guest Name(s) (for nametag) _____

My check for \$ _____ **is enclosed for** _____ **guests/members/table.**

Make checks payable to: ASCE, Los Angeles Section

Members & Guests: \$25.00 per person Table Sponsor: \$250.00

No Later than 2/16/06

NEW COURSE FORMAT



COURSE FORMAT

The courses have been designed to illustrate the principles of cone penetration testing through the evaluation of case histories and worked examples. Our new format will allow for frequent opportunities for audience participation and open discussions of technical methodologies as they apply to project scenarios.

COURSE PURPOSE

Site characterization is the basic first step for any geotechnical or geo-environmental study. This short course will provide engineers and geologists with the knowledge and background to plan and supervise site investigations and to interpret CPT data.

COURSE ATTENDEES

The courses are intended for Geotechnical Engineers and Engineering Geologists working with foundation design, liquefaction, and geotechnical site investigation and Geologists, Engineers, and Environmental Professionals working with environmental site assessment and remedial design. Each attendee will earn eight (8) Professional Development Hours (PDH's) for participation in the short course.

A SHORT COURSE ON Environmental and Geotechnical CONE PENETRATION TESTING

Gregg In Situ, Inc. is pleased to announce the scheduling of our 2007 short courses on cone penetration testing (CPT) in environmental and geotechnical site investigations.

COURSE CONTENT

Environmental Site Investigation

- Soil Stratigraphy
- Piezometric Pressure
- Evaluation of Contamination Using:
 - UVIF
 - MIP
 - Soil Sampling
 - Groundwater Sampling
 - Vapor Sampling
- Field Demonstration

Geotechnical Site Investigation

- Shallow Foundation Design
- Liquefaction Evaluation
- Pile Design
- Other In Situ Tests
- Field Demonstration

**Primary
COURSE INSTRUCTOR:**
Peter Robertson, Ph.D.

Monday - April 9, 2007

HYATT REGENCY - HUNTINGTON BEACH

21500 Pacific Coast Highway
Huntington Beach, California 92648

8:30 a.m. to 5:00 p.m.

Registration/continental breakfast at 8:00 a.m.

Both Environmental & Geotechnical courses will be conducted simultaneously. Register for one course only.

Presented by:
Gregg In Situ, Inc.
Phone: (562) 427-6899
Fax: (562) 427-3314



www.greggdrilling.com

ADDITIONAL COURSE LOCATIONS/DATES -- CONCORD: APRIL 2, 2007 and SACRAMENTO: APRIL 4, 2007
Visit our web site at www.greggdrilling.com/seminars.htm for further details and alternate registration forms.

2007 SHORT COURSE REGISTRATION FORM — HUNTINGTON BEACH

Payment must be received by **MARCH 13, 2007** to qualify for early registration.

\$195.00 - early registration fee OR \$270.00 - late registration fee

COURSE DATE: APRIL 9, 2007

(Indicate course attending by checking the corresponding box. Register for one course only.)

☐ Environmental Site Investigation **OR** ☐ Geotechnical Site Investigation

Mail/Fax your completed registration form to:

(Make checks payable to: Gregg In Situ, Inc.;
If faxing please include a copy of check)

GREGG IN SITU, INC. ATTN: Maryann Keating
2726 Walnut Ave. **E-MAIL: mkeating@greggdrilling.com**
Signal Hill, CA 90755

Attendee Name: _____ Title: _____ Company/Agency: _____

Address: _____ City, State, Zip: _____

Phone: _____ E-Mail Address: _____

Payment information must be completed for processing: (Check one) ☐ My check # _____ in the amount of \$ _____ is enclosed.

☐ Charge my credit card in the amount of \$ _____ ☐ ☐ ☐ Card number: _____ Exp. Date: _____

Card Holder Name: _____ Billing Address: _____

Registration fee includes seminar, reference materials, continental breakfast, lunch, break refreshments, and hotel parking. Class size is limited; early registration is advised. On-site registration will be on a space available basis. Gregg In Situ, Inc. reserves the right to cancel any seminar. If a course must be cancelled, a full refund will be issued. If registrant is unable to attend, a charge of \$75.00 for any cancellation within 10 business days of the seminar will be assessed. No refund for cancellation within three business days of the seminar will be offered. Notice of cancellation or substitution must be submitted in writing, listing attendee name and seminar date.

Full-Time Civil Engineering Lecturers

The Civil Engineering Department at Cal Poly Pomona is accepting applications for full-time lecturers. These positions include teaching undergraduate lecture and laboratory courses, student advising, and other related duties.

Minimum qualifications are an MSCE or equivalent, PE or LS license, and at least three years of post-baccalaureate civil engineering work experience.

Cal Poly Pomona has the largest undergraduate civil engineering program in the country, and is known for its practice-oriented curriculum. See www.csupomona.edu/ce for more details.

For further information on these positions, please e-mail to ce@csupomona.edu or call 909-869-2488.



CAL POLY POMONA

KPFF CONSULTING ENGINEERS

KPFF Consulting Engineers seeks motivated and energetic structural engineers. 2+ yrs of structural design experience with steel, concrete, masonry and timber desired. B.S., M.S. degree; a P.E. license a plus. Excellent communication and teamwork skills are essential. Substantial growth opportunity for all levels, and the opportunity to work on a wide variety of interesting and challenging projects. Immediate positions available in our Los Angeles and Pasadena offices. Please contact, fax or e-mail resume to the following:

For Los Angeles:

Ms. Joy Hernandez
KPFF Consulting Engineers
 6080 Center Drive, Suite 300
 Los Angeles, CA 90045
 Phone: (310) 665-1536
 Fax: (310) 665-9070
 Email: jhernandez@kpff-la.com

For Pasadena:

Ms. Tamara Kealty
KPFF Consulting Engineers
 2 N. Lake Avenue, Suite 820
 Pasadena, CA 91101
 Phone: (626) 578-1121
 Fax: (626) 578-9121
 Email: tkealty@kpff-pas.com

ASCE's 2006

**Member-Get-A-Member
 Drive Depends on You!**

JOIN THE GROWING TEAM OF
DMJM Harris, an AECOM Company
 recognized in the ENR 2006 as the #1 Transportation Engineering Firm in the US, has immediate openings throughout the West Coast:

Civil Highway Engineers

Bridge Engineers

Drainage Engineers

Facility/Building Engineers

Project Managers

DMJM Harris offers an excellent salary and benefits package including - 401(k) Stock Purchase Program, Health, Life, Dental, Tuition Reimbursement, Career Advancement Opportunities, Savings Plans, Referral Bonuses and more.

This is an excellent opportunity to advance your career through involvement in a variety of assignments on a wide array of challenging and rewarding high-profile projects, DMJM Harris is an Equal Opportunity Employer.

Please forward resumes to our Corporate Recruiter:
Pam.hoebener@dmjmharris.com

Visit our website at www.dmjmharris.com

HYDROLOGY/HYDRAULICS SOFTWARE

- Automatic English-to-Metric Conversion
- Used by Cal Trans, Government Agencies

WSPGW for Windows

Water Surface Pressure Gradient,
 FEMA Approved

Rational/Modified Rational Hydrology Methods

For Los Angeles, Riverside, San Bernardino, San Diego, Orange & Kern Counties

Unit Hydrograph Hydrology Method, Flood Hydrograph Routing, Basin Analysis

Multi-Day Storm Event Analysis

Steady-State Hydraulics, Street Inlets, Pumps, Etc.



*FEMA Approval for WSPGW Only

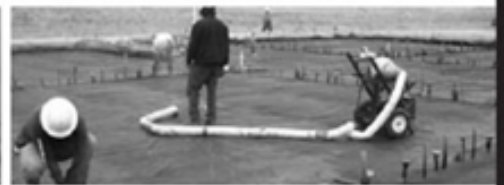


CIVIL DESIGN®
 Software for Engineers, By Engineers

Tel 909.885.3806

Fax 909.381.1721

www.civildesign.com



Irvine | Los Angeles | Temecula | Rancho Cucamonga | Palm Desert | Santa Clarita | Ventura | Bakersfield | San Diego | Phoenix

page 9

NEWPORT BEACH

California

*We are looking
for three
successful
professionals
to join our
Public Works
team,
share our values,
and make
your mark
in our community*

City Engineer

(Salary: up to \$131,560 DOQ, plus excellent benefits)

Development / Transportation Manager

(Salary: up to \$131,560 DOQ, plus excellent benefits)

Principal Engineer

(Salary: up to \$113,443 DOQ, plus excellent benefits)

You might be the ideal candidate if . . .

- You feel it's important to get the job done and have some fun.
- You enjoy challenge, change and encourage creative solutions.
- You have the education and experience required.
- You ever thought you could be just as efficient and effective in your job wearing a Hawaiian shirt instead of strict business attire. (Okay, not all the time, but we are a beach city.)

Apply by:

March 6, 2007



City of Newport Beach, California

Human Resources Department

For more information,

visit us at www.city.newport-beach.ca.us.

(949) 644-3300

EOE

Project and Senior Geotechnical Project Engineers

TRC Lowney, ranked the 9th largest engineering firm in the Silicon Valley, seeks qualified individuals for our **geotechnical teams**:

- **Fairfield, CA**
- **Fullerton, CA**
- **Manteca, CA**

Ideal candidate will manage a variety of private and public projects of varying complexity and size, and should be ready to serve our existing and future clients. Experience with commercial, multi-story residential, hillside grading, and bay mud sites is highly desirable.

Responsibilities include business development, client management, proposal and report preparation, engineering and geotechnical analyses, and management and mentoring of staff professionals.

B.S. or M.S. in Civil Engineering (with geotechnical emphasis) and California PE required. Prefer 8+ years of relevant experience in geotechnical consulting, California GE. This leadership position requires a team-oriented professional capable of communicating effectively with clients, regulatory agencies, and junior staff professionals. Desire to provide excellent customer service is mandatory.

Aggressive salary, discretionary bonus program, and full benefits package are offered. Flexible schedules available. Cover letter/resume to careers@lowney.com or mail to: Recruiting TRC Lowney 405 Clyde Avenue Mountain View, California 94043. An equal opportunity employer EOE/AA/ADA.



**CE NEWS TOP 2
BEST FIRM**
To Work For

*Providing innovative, timely and cost effective solutions to
today's design challenges through personalized Client service.*

PLANNING ■ DESIGN ■ CONSTRUCTION

Offices located throughout Arizona, California and Nevada • www.RBF.com



WHERE **EXCEPTIONAL PEOPLE**
ARE THE RULE!



RBF's reputation is founded on a commitment to quality, professionalism and continuing innovation. We provide a vibrant, family-oriented, team-based environment and exceptional opportunities for professional success and personal growth.

We are currently seeking professionals in the following disciplines:

**Land Development • Water / Wastewater • Flood Control / Drainage
Water Quality • Transportation & Traffic • Structures
Construction Management • Survey / Mapping / GIS**

RBF offers excellent compensation and benefits packages, a generous matching 401(k), profit sharing and bonus plans, relocation assistance and ownership opportunity. Join our team, build your career with us, and make a difference!

For additional information please visit www.RBF.com.

Fax: 949.855.7060

Email: hrmail@rbf.com

EOE M/F/D/V

**CE NEWS TOP 2
BEST FIRM**
To Work For

Advanced Earth Sciences, Inc.
Geotechnical and Environmental Consultants

Kris Khilnani, PE, GE - President
Dr. Suji Somasundaram, PE, GE - Principal Engineer
Grant Miller, PG, CEG - Principal Geologist

20 Fairbanks Suite 178 Irvine, CA 92618 (949) 458-3832 FAX (949) 458-1046 Website: www.aescicons.com

Earth Systems Southern California
Geotechnical Consultants • Environmental Consultants
Materials Testing Laboratories

Los Angeles • (818) 901-8075 / (626) 358-0955
Palmdale • (661) 949-7533 • Ventura • (805) 642-8727
Other Earth Systems companies
Earth Systems Northern California • Earth Systems Pacific
Earth Systems Southwest
www.earthsystems.com

GREGG Phone: (562) 427-6899
Fax: (562) 427-3314
Email: info@greggdrilling.com
Web Site: www.greggdrilling.com

GREGG DRILLING & TESTING, INC.
• ENVIRONMENTAL AND GEOTECHNICAL DRILLING
• WELL INSTALLATION
• CONE PENETRATION TESTING
2726 WALNUT AVE. • SIGNAL HILL, CA 90755

kpff Consulting Engineers
www.kpff.com

6880 Center Drive, Suite 300 Los Angeles, CA 90045
(310) 865-1538 Fax (310) 665-9075

Seattle Tacoma Portland San Francisco Oakland Sacramento
Los Angeles Irvine San Diego Phoenix St. Louis

AEI-CASC CONSULTING
Corporate Office
937 S. Via Lata, Suite 500 Colton, CA 92324
909.783.0101 • 909.783.0108 fax

Offices in Orange, San Diego, Los Angeles,
San Bernardino and Riverside Counties
www.aei-casc.com

Civil Engineering • Planning
Environmental Engineering • Surveying

"Providing comprehensive and creative solutions
to guide the progress of our diverse communities."

eda
civil engineers • land surveys • test planners

1998 Santa Barbara Street, Suite 200
San Luis Obispo, CA 93401
805.549.8058 tel. www.edacorp.com 805.549.8704 fax

GROUP Kul Bhushan, Ph.D., G.E.
President

92 Argonaut, Suite 120
Aliso Viejo, CA 92606-4121
(949) 409-1020 ext. 8000
(949) 409-1030 fax
Kul@GroupDelta.com email

Geotechnical Engineering
Geology
Hydrogeology
Earthquake Engineering
Materials Testing of
Soil/Foundation
Foundation Services

DELTA CONSULTANTS

TORRANCE (310) 520-5100 ext. 400
San Diego (619) 524-1500 ext. 400
www.GroupDelta.com

KEHOE TESTING & ENGINEERING
• Cone Penetration Testing (CPT)
• Direct Push Soil, Water & Vapor Sampling
• Truck Mounted, Track & L&L Access Rigs

Soil Testing & Sampling Services
for Geotechnical & Environmental Consultants

15571 Industry Lane
Huntington Beach, CA 92649-1534
(714) 901-7270 (714) 901-7289 fax

STEVE KEHOE, P.E.
PRESIDENT

amec

Earth & Environmental
Douglas R. Bell, GE
Scott T. Karwin, CEG
Mark W. McLarty, CEG

1290 N. Hancock Street
Suite 102
Anaheim, California
USA 92807-1924

Tel (714) 779-2591
Fax (714) 779-8377
www.amec.com

GENTERRA Consultants, Inc.
Engineering & Environmental Services
Irvine • Sacramento • San Diego • Corona • San Jose

Joseph J. Kulikowski, PE, GE
Founder, President, & Principal Engineer

15375 Bannan Pkwy • Suite K-102 • Irvine, CA 92618
Phone (949) 753-8766 • Fax (949) 753-8887
E-Mail: jockul@genterra.com • Web Site: www.genterra.com

H&A
HUNSAKER & ASSOCIATES
LOS ANGELES, INC.

PLANNING • ENGINEERING • SURVEYING
GOVERNMENT RELATIONS • LANDSCAPE ARCHITECTURE

20074 Avenue Hall, Suite 22 Valencia, CA 91355
(661) 294-2211 Fax (661) 294-9890
www.hunsaker.com

KRIEGER & STEWART INCORPORATED

ENGINEERING CONSULTANTS

• WATER
• WASTEWATER
• RECYCLED WATER
• STORM WATER

Riverside, CA • (951) 684-8900
www.kriegerandstewart.com

Converse Consultants
Geotechnical Engineering
Environmental & Groundwater Science
Inspection & Testing Services

Monrovia Office (626) 930-1200 Costa Mesa Office (714) 444-9660
Fax (626) 930-1212 Fax (714) 444-9640

Redlands Office (909) 796-0544 Sacramento Office (916) 331-5444
Fax (909) 796-7675 Fax (916) 331-6444

www.converseconsultants.com

Geomatrix

■ Environmental Science and Engineering
■ Geotechnical Engineering
■ Earthquake-Related Services
■ Air Toxics and Health Risk Assessment

James J. Weaver, P.E., G.E.
510 Superior Avenue, Suite 200 Newport Beach, CA 92663
(949) 642-8245 • office (949) 642-4474 • fax

HESS ENGINEERING INC
Structural Engineers

Richard L. Hess, S.E., SECB, FASCE
President

www.HessEng.com

3347 Centros Avenue • Los Alamitos, CA 90720-2105
(562) 799-8787 • FAX (562) 799-4973 • Cell (310) 717-4916

LDC

LAND DESIGN CONSULTANTS, INC.
Land Planning, Civil Engineering, Surveying & Environmental Services

799 South Los Robles Ave., Suite 250
Petaluma, California 94951
E-mail: ldc@ldc.com

Valencia Office
60470940
Fax 60470942

www.dcacivileng.com

DCA CIVIL ENGINEERING GROUP
SURVEYING • MAPPING • LAND PLANNING

(310) 327-0018
FAX (310) 327-0175

GeoPentech
Geotechnical & Geoscience Consultants

• Geotechnical Engineering
• Geo-Earthquake Engineering
• Seismic Hazards Evaluation
• Soil Dynamics/Vibrations

• Engineering Geology
• Hydrogeology
• Seismic Geology
• Forensic Studies

525 N Cabrillo Park Drive, Suite 280
Santa Ana, California 92701
Phone: (714) 796-9100; FAX: (714) 796-9191
Web Site: www.geopentech.com

Hichborn Consulting Group
1988 North Tustin Avenue, Orange, CA 92661
Fax: Office 714 637-7400, 714 637-7488
Web Site: www.hichborn.com

Geoffrey D. Hichborn, Sr., PE
Civil Engineer

Office (714) 637-7400 Mobile (714) 325-0466
Fax (714) 637-7488 E-mail: hichborn@hichborn.com

Thomas C. Benson, Jr., PE, GE, REAI
President and CEO

Leighton Consulting, Inc.
• GEOTECHNICAL • ENVIRONMENTAL • INSPECTION

10532 Acacia Street, Suite B-6
Rancho Cucamonga, CA 91730
(909) 484-2205, ext 130
(951) 265-5360 cell
(909) 484-2110 fax
Benson@leighonconsulting.com

DIAZ • YOURMAN & ASSOCIATES

Christopher M. Diaz, P.E.
Principal

Geotechnical Services
1616 East 17th Street Santa Ana CA 92705-8509
Tel. (714) 345-2920 • Fax (714) 345-2950 • Mobile (714) 412-2093
chris@diayourman.com www.diayourman.com

Noise & Air Studies
Registered Engineers in Business Since 1981

Freeways • Airports
Treatment Plants • Soundwalls
Building Acoustics • EIR/EIS
All Civil Engineering Projects

2701211 Lane Road
Laguna Hills, CA 92653
Tel: (949) 341-0075

JENSEN DESIGN & CONSTRUCTION, INC.

1472 Division Street
Ventura, California 93003

Local 805.654.6577
FAX 805.654.6579
State 800.676.1916

"Designing for the Future"

The leader in civil engineering and surveying providing professional state-of-the-art services, commitment to excellence, and timely responsiveness.

Engineers Planners Surveyors

LIN Consulting, Inc.
Traffic, Civil and Electrical Consulting Engineers

William Sun, P.E., T.E.
Senior Project Manager

21660 E. Copley Drive, # 270, Diamond Bar, CA 91765-4173
Tel (909) 396-6850 ext. 105 • Fax (909) 396-8150
E-mail: wsun@linconsulting.com

DUDEK ENGINEERING • ENVIRONMENTAL

CORPORATE OFFICE
465 THIRD STREET
ENCINITA, CALIFORNIA 92024
T 760.943.5147
T 800.455.1818
F 760.932.2144

WWW.DUDEK.COM

GPI
GEOTECHNICAL PROFESSIONALS, INC.

James E. Harris, G.E.
Byron Konstantinidis, G.E.
Paul R. Schrade, G.E.

8734 Corporate Ave.
Cypress, California 90630
(714) 320-3211 Fax (714) 320-3122
www.gpi-ca.com

K&A FALLABY Engineering, Inc.

357 N. Sheridan St. 117
Corona, CA 92680
Tel: (909) 279-1800
Fax: (909) 279-4380
Email: kfallab@engineering.com

• Engineering
• Land Planning
• Surveying

LaBelle • Marvin
PAVEMENT ANALYSIS, DESIGN, TESTING & INSPECTION • SINCE 1969

2700 S. GRAND AVENUE, SANTA ANA, CA 92705
(714) 546-3468 FAX (714) 546-58-41

Marvin B. Hudson, Ph.D., G.E. Senior Principal Project Manager
Marshall Lee, Ph.D., G.E. Senior Vice President
Perry A. Maljones, G.E. Senior Vice President

Earth Mechanics, Inc.
Geotechnical and Earthquake Engineering

Foundation Design
Seismic Evaluation
Soil-Structure Interaction
Field Investigation and Laboratory Testing
Grading and Foundation Inspections

www.earthmech.com

Fontaine Valley Los Angeles San Bernardino Oakland San Diego
(714) 763-3826 (310) 529-2197 (909) 896-5351 (916) 932-8033 (760) 736-8222

gsi Geotechnical Stabilization, Inc.
Amer R. Al-Ajaji, P.E.
President

Chemical Grouting
PressGrout Piles
Compaction Grouting
Lense Grouting

1558 Sterling Court • Escondido, CA 92029-1208
760/489-6696 • FAX 760/489-6697

Korve Engineering

Office in
Oakland
Los Angeles
San Jose
San Diego
Salt Lake City, UT

(510) 763-2929
155 Grand Avenue
Suite 700
Oakland, CA 94612

Traffic Engineering
Civil Engineering
Transportation Planning
Rail / Transit Services

For Job Opportunities, Visit www.korve.com

MACTEC
engineering and constructing a better tomorrow

ENGINEERING • CONSULTING • CONSTRUCTION

200 Citadel Drive • Los Angeles, California 90040-1554
323.889.5300 • fax 323.889.5398 • www.mactec.com

MOORE & TABER
Geotechnical Constructors

John S. Tims
President
Service in the industry since 1975

Moore & Taber
1290 North Hancock Street • Suite 102
Anaheim, California 92807

Soil Grouting and Foundation Improvement Specialists

Tel: (714) 779-0881
Fax: (714) 779-1458
Mobile: (714) 620-4213
j.tims@mooreandtaber.com

www.mooreandtaber.com

PETRA

2121 Solad Canyon Road, Suite 509
Santa Clara, California 95051
T: 661-255-5790
F: 661-255-5242

◆ Environmental Site Assessments ◆ Soil Testing
◆ Environmental Audits ◆ Geological Investigations
◆ Geotechnical Engineering Services

SB&O INC.
PLANNING • ENGINEERING • SURVEYING

David White, P.E.
Vice President, Project Manager

Phone 909.635.0335 1035 South Milliken Avenue, Suite E
Fax 909.635.0365 Ontario, California 91761
Email dwhite@sbainc.com www.sbainc.com

WALLACE GROUP

DEDICATION TO SERVICE*
CIVIL ENGINEERING
CONSTRUCTION MANAGEMENT
LANDSCAPE ARCHITECTURE
MECHANICAL ENGINEERING
PLANNING
PUBLIC WORKS ADMINISTRATION
SURVEYING / GIS SOLUTIONS
WATER RESOURCES

805.544.4011
www.wallacegroup.us

NMG
Geotechnical, Inc.

Hayim Ninyo
Ted Miyake

17991 Fitch, Irvine, CA 92614
Phone (949) 442-2442 Fax (949) 476-8522
E-Mail: hninyo@nmggeotechnical.com
www.nmggeotechnical.com

PERLITER & INGALSBE
CONSULTING ENGINEERS

Engineering Investigations, Designs and Construction Services for:

- ◆ Potable Water
- ◆ Recycled Water
- ◆ Wastewater
- ◆ Storm Drainage

(626) 398-9111

2369 Lincoln Avenue, Alhambra, California 91801
Facsimile: (626) 398-9115 Website: www.p-and-i.com

SUKUT CONSTRUCTION, INC.
General Engineering Contractor
License No. 19478

www.sukut.com
Apply online at:
sukut.com/employment

800.339.6024
4010 W. Chandler Avenue
Santa Ana, CA 92704-5202

Office 714.540.5351
Fax 714.545.2438

We hear you!

Noise and Vibration Studies for:
Freeway Soundwalls | Street Widening
Water Treatment Facilities | Pump Stations
Power & Cogeneration Plants

949-474-1222 | wielandassoc.com

Wieland Associates, Inc.
Acoustical Consultants

NORRIS-REPKE

Capital Improvement Design
City Engineering
Land Surveying & GIS Services
Construction Management
Water and Sewer
Building & Safety
Engineering Software

TEL: 714-973-2230
FAX: 714-973-2263
www.norrisrepke.com
400 N. Tustin Avenue, Suite 230, Santa Ana, CA 92705

THE PRESSURE
GROUT COMPANY

Steven C. Chandler
Branch Manager

1975 National Avenue
Hayward, CA 94545-1709
510-887-9244
www.pressuregrout.com • email: sgc@pressuregrout.com

1300 W. Gaylord Street
Long Beach, CA 90813-1201
562-432-4100

Civil • Environmental • Water Resources
Surveying • Construction Management • Program Management

TKE ENGINEERING, INC.

4445 Central Avenue • Riverside California 92506
(951) 480-0440 • Fax (951) 480-0490
www.tbengineering.com

Engineering, Planning, Landscape Architecture,
Building and Safety, & Construction Management.

WILLDAN
Serving Public Agencies

800/424-9144 www.willdan.com

PACE
PACIFIC ADVANCED
CIVIL ENGINEERING, INC.

Innovative Water Resource
Design Solutions
in Partnership with Nature

- ◆ Stormwater Management
- ◆ Wastewater / Potable Water
- ◆ Lakes / Water Features

www.p-a-c-e.com

17520 Newhope St., Suite 200, Fountain Valley, CA 92708
Main: 714.481.7300 Fax: 714.481.7299

PSOMAS
Celebrating 60 years

Land Development
Transportation
Water

11444 W. Olympic Blvd.
Suite 750
Los Angeles, CA 90064
310.954.3700 P
310.954.3777 F

California • Arizona • Colorado • Nevada • Utah 1.866.9.PSOMAS

VA Consulting, Inc.
Corporate Office
17801 Cartwright Road
Irvine, CA 92614

Phone 949.474.1400
Direct Dial 949.474.1401 Ext. 212
Fax 949.261.8482
E-mail: maxvalid@vaconsultinginc.com

Max P. Valid, P.E.
President and CEO

Offices in: Irvine • Corona • Rancho Mirage

HENRY F. KLING, P.E., G.E.
Principal Geotechnical Engineer
(714) 755-1355
(714) 755-1366 Fax
hklng@zcki.com

ZEISER KLING
Consultants, Inc.

1221 E. Dyer Road
Suite 105
Santa Ana, CA 92705

Geotechnical Consulting • Materials Testing • Inspection

PARSONS

2201 Dupont Drive, Suite 200
Irvine, California 92612
(949) 263-9322
Fax: (949) 263-1225
kevin.haboian@parsons.com

Kevin A. Haboian, P.E.
Senior Project Manager / Vice President

www.parsons.com

RBF CONSULTING

Providing innovative, timely
and cost effective solutions to
today's design challenges through
personalized Client service.

Offices located in California,
Arizona and Nevada
14725 Alton Parkway
Irvine, CA 92618
800.479.3808 • www.RBF.com

PLANNING
DESIGN
CONSTRUCTION

PB
100 YEARS

K.N. Murthy, P.E.
Senior Vice President
Principal Professional Associate
Principal Project Manager

444 South Flower Street
Suite 3700
Los Angeles, CA 90071
Fax: 213-626-3840
Tel: 213-696-5860
Murthy@pbworld.com

Parsons
Brinckerhoff
Quade &
Douglas, Inc.

RICK
ENGINEERING COMPANY

City Plaza Building
One City Boulevard West
Suite 1265
Orange, CA 92668-3616
Tel: (714) 939-1443
Fax: (714) 939-1441
rickengineering.com bccowan@rickengineering.com

Barry J. Cowan, R.C.E.
Associate Principal
Office Manager

The Source for Engineering Excellence

PBSJ
An employee-owned firm

Encinitas 760.753.1120
Los Angeles 310.268.8132
Orange 714.750.7275
Riverside 951.358.1433
Sacramento 916.325.4800
San Diego 858.874.1810
San Francisco 415.362.1500

Transportation • Civil • Environmental • Construction Management

the structural engineering consultants, inc.

Greg Riley, P.E.
Principal

27200 Torrey Road
Suite #390
Valencia, CA 91355
www.structuralconsulting.com
greg@structuralconsulting.com

Tel: 661-287-5800
Fax: 661-287-5855
Toll Free: 877-622-4872

www.penfieldsmith.com

Penfield & Smith

SERVING THE PUBLIC & PRIVATE SECTORS FOR 60 YEARS

- ◆ Civil Engineering
- ◆ Land Surveying
- ◆ Planning & Permit Processing
- ◆ Traffic Engineering
- ◆ Construction Management & Inspection

SA ASSOCIATES

Shahnawaz Ahmad
CONSULTING ENGINEERS

Los Angeles County:
1130 W. Huntington Drive
Unit 12, Arcadia, CA 91007
Tel 626.821.3456
Fax 626.445.1461
Mobile 626.826.3456 • e-mail: saahmad@saassociates.net

Orange County:
1861 N. Raymond Avenue
Suite 100, Anaheim, CA 92801
Tel 714.871.9083
Fax 714.871.3652

Find out the latest Section &
Branch news @
www.ascelasection.org

MATERIALS SUBMISSION INFORMATION

If you'd like to have your business card or company information listed in the Professional Directory, please contact **Russ Ryan at (213) 217-6625** or email him at rryan@mwdh2o.com for rates and deadlines.

All graphic materials submitted for use in this newsletter should have all fonts outlined, and links included; .eps files preferred. Other formats are: Quark, Adobe Illustrator or Adobe Photoshop; additional acceptable file formats are: .qxd, .eps, and .tif; PDF files are acceptable for proofing only. Images embedded in Microsoft Word documents should be sent separately, at a minimum resolution of 150 dpi at the display size desired. Collected files, including links and fonts, should be compressed and emailed, or sent on zip disk (provide return address). Business cards can be submitted electronically as well, or send clean, crisp, b&w laser print, unfolded.

ASCE OFFICERS OF THE LOS ANGELES SECTION, FY 2006-2007

President	John T. Morris, P.E.	Morris Water Resources Consultants	Morriswater@earthlink.net	(626) 796-0020
President-Elect	Mark Norton, PE	Santa Ana Watershed Project Authority	mnorton@sawpa.org	(951) 354-4221
Secretary	Jay Higgins, P.E.	URS Corporation	jay_higgins@urscorp.com	(818) 406-4896
Treasurer	Diego Cadena, P.E.	L.A. County Department of Public Works	dcadena@ladpw.org	(626) 458-4008
Past-President	Rich Haller, P.E.	San Bernardino Valley Municipal Water District	richardh@sbvmwd.com	(909) 387-9223
Vice President - Student Activities	Don Sepulveda, PE	DMJM Harris	don.sepulveda@dmjmharris.com	(213) 593-8401
Vice President - Technical Groups	Sonia Nasser, P.E.	County of Orange	Sonia.Nasser@rdmd.ocgov.com	(714) 834-5679
Desert Area	Gene Coufal, P.E.	City of L.A. Department of Water and Power	gene.coufal@ladwp.com	(760) 697-3140
Metropolitan LA	Cung Nguyen, P.E.	L.A. County Department of Public Works	cunguyen@ladpw.org	(626) 458-2562
Orange County	Yazdan Emrani, P.E.	Advanced Infrastructure Management, Inc.	yemrani@aim-corp.net	(714) 982-5040
San Bernardino/Riverside	Christopher Turnage, P.E.	Associated Engineers, Inc	cturnage@assoc-eng.com	(909) 226-4364
San Luis Obispo	Jeff Werst, P.E.	County of San Luis Obispo	jwerst@co.slo.ca.us	(805) 781-4480
Santa Barbara/Ventura	Lauren J. Doyel, P.E.	BTC Labs	lauren.doyel@us.bureauveritas.com	(805) 656-6074
Southern San Joaquin	Janice Horcasitas, P.E.	City of Bakersfield	jhorcasi@bakersfieldcity.us	(661) 326-3607
Young Member Forum	Serge Haddad, P.E.	City of Los Angeles, Bureau of Engineering	Serge.Haddad@lacity.org	(213) 978-2074
Life Member Forum	Ted McConville, PE		tedmconville@aol.com	(949) 673-4475

NEWSLETTER INFORMATION

Publisher

ASCE LA Section
Christina Lucas
1405 Warner Ave.
Tustin, CA 92780
Phone (714) 258-8306
Fax (714) 258-8391
E-mail: clucas@associationplanet.com

Editor

Dr. Cris B. Liban, P.E.
LACMTA
One Gateway Plaza
Mail Stop 99-17-2
Los Angeles, CA 90012
Phone (213) 922-2471
FAX (801) 457-2687
E-mail: cliban@UCLAumni.net
Typesetting, Layout & Printing: The Center Quickprint



Please send all copy to the Editor by the first of the month preceding publication.

Identification Statement

ASCE Newsletter, (ISSN 0273-6233) is published monthly by ASCE, Los Angeles Section, 1405 Warner Ave. Tustin, California 92780. Subscription price included in Section dues of \$45.

Circulation

Circulated monthly (except for a joint July/August issue) to the 5,000 subscribing members of the Los Angeles Section, ASCE.

Advertising Rates

EMPLOYMENT ADS	DISPLAY ADS
\$75/column inch	1/8 page \$150
	1/4 page \$250
	1/2 page \$415
	1 page \$690

PROFESSIONAL DIRECTORY

\$350 per business card for a full year (Additional fees may be applied for typesetting. Please call for information.)

POSITION WANTED ADS

No cost to L.A. Section members.

For more advertising and billing information, please contact Russ Ryan, P.E., at MWD at (213) 217-6625 or rryan@mwdh2o.com

National ASCE (800) 548-2723 (ASCE)
Access National ASCE at: www.asce.org
L.A. Section web site at: www.ascelasection.org



THIS NEWSLETTER IS PRINTED ON RECYCLED PAPER.

Los Angeles Section
Monthly: Est. 1913
1405 WARNER AVE.
TUSTIN, CA 92780

**POSTMASTER: THIS CONTAINS TIME-SENSITIVE MATERIALS.
PLEASE DELIVER PROMPTLY.**

**NON-PROFIT
U.S. POSTAGE
PAID
PERMIT NO. 1441
SANTA ANA, CA**

**Please contact ASCE Membership at
1-800-548-ASCE for any address changes.**