

# Los Angeles Section

Monthly: Est. 1913

ORANGE / SAN\_BERNARDINO/RIVERSIDE / SAN\_LUIS\_OBISPO / SANTA\_BARBARA/VENTURA / DESERT / SOUTHERN SAN\_JOAQUIN / METROPOLITAN LOS ANGELES

PRESIDENT'S MESSAGE

Jay Higgins, P.E., M.ASCE  
Section President

## May is Disaster Preparedness Month in California - Are You Prepared?



A 7.0-magnitude earthquake in Haiti on January 12th, an 8.8-magnitude earthquake in Chile on February 27th, and a 7.2 earthquake on April 4th in our own backyard in Mexicali, Mexico with the earthquake and aftershocks affecting parts of Imperial County, California. These are reminders that we live in a seismically active state where earthquakes can strike at any time. Since we can't stop earthquakes, the only other course of action we have is to be prepared to deal with the aftermath of an earthquake or other disaster. As civil engineers, there are two primary ways in which we can

be prepared: 1) first and foremost, be ready to take care of yourself and your family to assure their safety and have a plan to survive for at least three days after the disaster, and 2) become a trained volunteer in the California Emergency Management (Cal EMA) Agency, Safety Assessment Program, which is the agency that assists local communities in conducting safety evaluations of built environment following a earthquake or other disaster.

Cal EMA states on their web site ([www.oes.ca.gov](http://www.oes.ca.gov)), "The first 72 hours after a major emergency or disaster are critical. Electricity, gas, water, and telephones may not be working. In addition, public safety services such as police and fire departments will be busy handling serious crises. You should be prepared to be self-sufficient - able to live without running water, electricity and/or gas, and telephones - for at least three days following a major emergency." Many of us have said to ourselves that one day we'll put together that disaster supply kit and other supplies we'll need, but aren't sure what should be in the kit and on hand. See page 6 of this newsletter for an emergency supplies checklist that Cal EMA suggests you keep on hand in a central location. They also suggest the ten ways to be prepared for a disaster (See the side bar or go to their website for links to each of these topics).

After you have taken care of yourself and family, the next thing you can do to help your community is to volunteer during the disaster

### 10 Ways You Can be Disaster Prepared

1. Identify Your Risk
2. Create a Family Disaster Plan
3. Practice Your Disaster Plan
4. Build a Disaster Supply Kit For Your Home and Car
5. Prepare Your Children
6. Don't Forget Those With Special Needs
7. Learn CPR and First Aid
8. Eliminate Hazards in Your Home and The Workplace
9. Understand Post 9/11 Risks
10. Get Involved, Volunteer, Bear Responsibility

From: Cal EMA website, [www.oes.ca.gov](http://www.oes.ca.gov)

VOL\_XLX NO\_5

**In This Issue** page

PRESIDENT'S MESSAGE ..... 1

EDITORIAL ..... 2

REGION 9 LEGISLATIVE AFFAIRS ..... 2

REGION 9 AWARD RECIPIENTS ..... 3

7.2 EARTHQUAKE IN MEXICO ..... 4

NOW SHOWING IN THE MUSEUM ..... 5

PREPAREDNESS TIPS ..... 6

ANNOUNCEMENTS ..... 7-9

EMPLOYMENT OPPORTUNITIES ..... 9

PROFESSIONAL DIRECTORY ..... 10-11



## Are You Ready?

This month we feature several articles on disaster preparedness. We also include a first hand account of what one of our members had observed after the recent 7.2-magnitude earthquake in Mexicali, Mexico.

I was with a group on tour of the U.S.-Mexican border in San Diego exactly a week before this earthquake hit. During that tour, we were trying to assess the cross border relationships/policies that are currently in place as well as the issues associated with those policies. While not encouraging, there are signs of hope. What is interesting though is our observation that nothing brings countries together more than a disaster. But this begs a question; do we need a disaster to bring countries together? We as engineers can be that facilitator of unified effort in our communities.

By reading through the articles in this current issue, we are hoping that you realize that we are one with our neighbors, whatever country or community they may be. As civil engineers, we transcend beyond what is apparent and through our skills, we are able to help out in assessment, planning, building, and operating built infrastructures. Our profession is one of the few that has so much flexibility that our value and ability to contribute is very significant.

We also feature recent 2010 Region 9 awardees. This set of awardees was already featured last time, but we want to provide special and local recognition to them in this issue. We hope that their work serves as inspiration in the specific aspect of our organization that you participate or plan to participate in.

There is so much that you can do to be active not only in your profession but most importantly in ASCE and the communities that we serve. We therefore encourage you to do so.

Are you ready?

Enjoy this issue of your newsletter.

-Dr. Cris B. Liban, P.E.

---

### Reminder:

*Copy deadline for the June 2010 issue is May 1, 2010; copy deadline for Jul-Aug. 2010 issue is June 1, 2010.*

---

**ASCE's 2010  
Member-Get-A-Member  
Drive Depends on You!**

---

## Region 9 Legislative Affairs

*By: Richard Markuson of the Pacific Advocacy Group, Legislative Analyst to the Region 9 Board of Governors*

In March, the State Senate Committee on Business, Professions and Economic Development passed the ASCE supported AB 1431 (Jerry Hill – D-South San Francisco) which amended the makeup of the Board of Registration for Engineers and Land Surveyors. AB 1431 updates the name and expands membership to include one licensed geologist or geophysicist. In deciding to support the bill, ASCE Region 9 Governors felt it important that geologists and geophysicists be represented on the board. In an interesting development, the Association of Environmental and Engineering Geologists (AEG) has taken an "oppose unless amended" position on the bill, urging that the bill be amended to: (1) maintain the number of Board members at 13 members, the current level; (2) add one geophysicist to the Board; (3) add "Geophysicist" to the name of the Board. The bill in its current form only adds one member who is a geologist or geophysicist and does not include geophysicist in the name of the board. AEG wants to remove the Structural Engineer and the title act engineer from the board to keep the membership at 13. The bill will be on hold while conversations take place with the administration and among the engineering societies.

ASCE Region 9 has joined the Alliance for Clean Water and Jobs to help convince the public of the merits of spending on water infrastructure and to support the Water Bond at the general election in November. The Alliance website <http://www.waterforca.com/> has information on the Water Bond and talking points.

The Region 9 Water and Environment Committee has been reviewing more than 40 bills that were introduced this year dealing with water related matters. Based upon recommendations of the Committee, Region 9 will be recommending amendments to AB 1793 that prohibits the governing board of a common interest development from banning artificial turf. While supporting the use of technologies like grass replacements to encourage water conservation, Region 9 believes it is important that these replacements maintain the permeability of the native material so as not to reduce groundwater recharge or increase stormwater runoff. Region 9 is also supporting AB 1978 that requires new multi-unit construction include provisions for individual water meters as a water use efficiency promoting technology. Region 9 will oppose AB 2049 that would ban any water transfers from an agricultural user to a municipal user and will "oppose unless amended", AB 2092, which allows the Delta Stewardship Council (DSC) to charge a fee on water supply contractors of the State Water Project (SWP) or Central Valley Project (CVP). The Committee recognized the need for funding for the DSC but will encourage a broader application of fees to include the beneficiaries of the water controlled by the DSC. For more information on the Water Committee's activities, contact Mark Norton [MNorton@sawpa.org] or Richard Markuson [Richard@pacificadvocacygroup.com].

---

**ASCE**  
*American Society of Civil Engineers*

---

# Region 9 Award Recipients from the Los Angeles Section



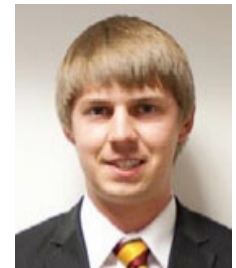
**Ziad Y. Mazboudi, P.E.**  
City of San Juan Capistrano  
and Vice President of the  
Orange County Branch

## Outstanding Civil Engineer in Community Service

Over the years, Mr. Mazboudi has mentored low income student interns by introducing them to positive programs and encouraging them to think big, be professional, work hard, and be punctual. Some of these students have excelled and are now college graduates. He works with the Boy Scouts, Girl Scouts, and many other youth and community groups to provide environmental education (recycling and energy conservation), stress the importance of living green, raise awareness of storm water protection, and provide a more structured education on ocean and creek monitoring and neighborhood cleanup. He is the Chair of the ASCE Region 9 Disaster Preparedness Committee and is working on developing programs to increase the number of volunteer trained engineers in California. Over the past 22 years, Mr. Mazboudi has tried to show that civil engineers are multi-faceted, community conscious, and community active. He has also been active in international activities using his education and professional experience to make the world a better place.

## Outstanding Civil Engineering Student

As a member of USC ASCE, Mr. Burnham has served as Freshmen Class Representative, Concrete Canoe Captain, and President. Under his direction, the organization has taken great strides to improve membership representation, organizational structure, and competitiveness within the Pacific Southwest Regional Conference. Major improvements included a complete overhaul of the organization constitution, development of a "big siblings" program to encourage younger members to join by partnering with current ASCE members, and most recently, the implementation of an Infrastructure Report Card for the University of Southern California. Other recent successes include budgeting and fundraising to send 39 students to Hawaii for the Pacific Southwest Regional Conference and sending six students to the ASCE National conference in Kansas City, MO. In addition, he is an active member in USC AGC, USC EWB, and USC Chi Epsilon. Over the past two years, Mr. Burnham has become actively involved in the USC Engineers Without Borders Chapter serving as the head engineer on a water distribution project in La Estanzuela, Honduras.



**Kyle Burnham**  
University of Southern California  
Student Chapter President



**Gary Gilbert, P.E.**  
Diaz Yourman & Associates  
and Treasurer of  
Los Angeles Section

## Outstanding Engineer in Legislative Activities

Mr. Gilbert was the legislative chair for the Orange County branch from October 2007 to September 2008, and has continued to be active with helping the new co-chairs build a stronger committee. Part of his duties as legislative chair at the Orange County Branch was to write regular articles on the activities in Sacramento and inform the members about bills that may affect the Civil Engineering profession. He has been participating in the Sacramento Legislative Fly-In since 2006. His involvement in the annual visit to the state capitol has evolved from participating in the first two years to becoming a member of the Region 9 Government Affairs Committee (GAC) and helping the chair, Michael Thornton, organize the event. As the Region 9 Government Affairs Committee has grown, so has Mr. Gilbert's involvement. He recruits new members to participate in the Region's legislative activities and informs members of the latest developments in infrastructure related legislation. This has included coordination with the Societies Government Relations Staff to send Key Alerts to California on important legislative activities to have the members contact their representatives regarding ASCE Region 9's position on the legislation. Currently, Mr. Gilbert is the Treasurer of the Los Angeles Section.

## Outstanding ASCE Section Officer



**Jay Higgins, P.E.**  
URS Corporation and President  
of the Los Angeles Section

Mr. Higgins has 35 years of experience in the design and construction management of water, wastewater, storm water, transportation, building, and earthwork projects. He has been a member of the ASCE since 1973, serving as Treasurer and President of the Metropolitan Los Angeles Branch as well as Secretary, and President-Elect for the Los Angeles Section. As an officer of the Los Angeles Section, he considers the health and welfare of each Branch and each Subsidiary organization under their care something requiring his attention. He regularly attends most of ASCE activities including Branch Board meetings, technical group luncheons/dinners, university student chapter mixers and meetings. Through his efforts, the Section has gone a long way to show their presence and concern where needed. As an example of his continuous support of the Branch programs; upon hearing that MLAB was working on a high school presentation, Jay coordinated with the Branch to assist with this program. He set up the initial contact for the teenage homeless shelter visit and was one of the presenters at the event. Considering all that he does that is above and beyond what most people would ever do, Jay always feels he is not doing enough. He is tirelessly dedicated to ASCE and the goals of the society.

*continued on page 4*

## 7.2 Earthquake in Mexicali

By: Ziad Y. Mazboudi, Region 9 Disaster Preparedness Chair

On Sunday April 4th, at 3:40 p.m., a 7.2 earthquake near Mexicali, Mexico shook Southern California, including everyone in Orange County. On Monday morning, CalEMA contacted all the partnering organizations that provide safety assessment program (SAP) evaluations and informed them to be on stand-by for assistance. At 5:30 p.m., I was contacted by CalEMA asking for ASCE assistance to evaluate downtown Calexico, where some serious damage has occurred and the border crossing has been closed. I contacted the San Diego ASCE disaster preparedness chair, Curt Edwards and informed him that a team of 2 evaluators are needed



Column damage



Damaged 10 M. Gallon clarifier



Curt and I with Calexico Chief of Police, Fire Chief, Building Officials



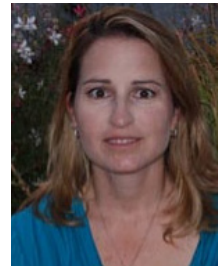
Street damage in Mexicali

to report to Imperial County EOC at 8:30 a.m. on Tuesday morning. Curt and I are certified evaluators under CalEMA's SAP evaluators program. Curt and I reported to the EOC at 8:30, where we briefed on the day's assignment, and we were asked to report to Calexico city hall, where we will be deputized. Once deputized, we formed a second team from local resources and divided the downtown into 2 areas to inspect. The downtown was totally shut down by local police and border patrol forces. On Monday following the quake, the local inspectors red tagged most of the downtown for safety purposes. Our goal was to reassess and evaluate if some buildings could be occupied safely or if further investigation is needed. We used the rapid evaluation technique and were able to re-tag a lot of the downtown buildings as safe to occupy, making the local businesses very happy, but there were several buildings that were unsafe to occupy, hence remained red tagged. Some of the buildings were unreinforced masonry and built in the early 1930s and experienced major cracking as a result of the quake. We also cleared the local fire station and police station. The most damaged was the city's water treatment plant, where a 10 million gallons clarifier was totally destroyed, and the 3 water reservoirs had roof damage. The City had one undamaged 5 million gallons clarifier but during the summer months, the City uses 10 MGD, so immediate action will be needed to figure out how to solve this problem. By end of day, our team has completed the required assignment and were thanked by CalEMA and the local authorities for our assistance.

## Region 9 Award Recipients from the Los Angeles Section

continued from page 3

### Outstanding ASCE Practitioner Advisor



**Kari Wagner, P.E.**  
Wallace Group and  
Past President of  
San Luis Obispo Branch

Ms. Wagner is an active member of ASCE, is the recent past president of the San Luis Obispo Branch, and is currently the Practitioner Advisor for Cal Poly San Luis Obispo Student Chapter. She volunteers her time to assist the student chapter with its activities and serves as a great role model for the students. For over three years, Ms. Wagner has served as Practitioner Advisor for the student chapter. In this role, she regularly attends chapter meetings and events. She offers words of advice and encouragement to the students and seeks to provide them with opportunities for professional development. She provides a great link to the profession and the local Branch, which has provided the students with opportunities to develop relationships from local professionals and learn from examples set by the leaders/officers of the ASCE SLO Branch. The student chapter feels very fortunate to have Ms. Wagner as an advisor and advocate.

### Outstanding Sustainable Technology Project

This new campus development is the single-largest construction project in the history of the California State University system. With 2670 beds, this housing complex includes three residential neighborhood areas on 30 acres with nine, four to five story buildings; four and five bedroom unit configurations; conference rooms, seminar room, laundry units and village retail center. Poly Canyon Village is a twenty-first century living and learning community with an atmosphere that is student-centered, stimulating, socially supportive and environmentally responsible. Poly Canyon Village is the first LEED certified project on the Cal Poly campus. It is the largest LEED certified project in the California State University system. Engineer of Record: Cannon



**Poly Canyon Village**

Owner: California Polytechnic State University, San Luis Obispo

# Now Showing in the Museum: Marilyn Jorgenson Reece Plaque

by Kelly Markham

The new plaque honors the contributions of the state's first female registered civil engineer.

In an era when families nationwide were tuning in to watch June Cleaver mop floors, bake cookies, and serve dinner in pearls and heels, Marilyn Jorgenson Reece was undertaking a new kind of "women's work": civil engineering.

Reece was the state's first female registered civil engineer – no small accomplishment in the 1950s, a time when acceptable professional roles for women were largely limited to teaching, nursing and secretarial work. To honor Reece's accomplishments, on March 4, Caltrans District 7 unveiled a permanent bronze plaque in the Headquarters Museum.



District Director Mike Miles served as master of ceremonies for the event, attended by about 45 friends, family members, current Caltrans staff and former coworkers. Event speakers included Kathy Caldwell, president-elect of the American Society of Civil Engineers, and Sutida Bergquist, president of the Los Angeles Section of Professional Engineers in California Government.



"Reece is emblematic of women coming into their own in the formerly male-dominated professions," Miles said. "She paved the way for all the women who came after her."

That she did. Fresh out of college, Reece began working with the California Division of Highways (now Caltrans) in 1948, rising from junior civil engineer to senior transportation

engineer over her 35-year career with the department. She passed the state licensing exam to become a registered civil engineer in 1954.

Among many important infrastructure projects, Reece designed the Santa Monica Freeway (I-10)/San Diego Freeway (I-405) Interchange, receiving a Governor's Design Award for the project in 1964. Two years ago, the interchange was officially named the "Marilyn Jorgenson Reece Memorial Interchange."



Reece's daughters, District 7 Senior Materials Engineer Kirsten Stahl and Anne Bartolotti, shared memories of their mother at the plaque unveiling.

"When I came home with a report card with mostly A's and a few A-minuses, she would sit me down and say, 'How can we bring up those A-minuses?'" Stahl said. She recalled that although her mother could be demanding, her drive for excellence encouraged others to do their best work.

Reece's best work is evident throughout the District – not only in the freeways she built, but in the esteem of her friends, family and coworkers and in the ambitions of the many women who have followed in her footsteps.



## A Great Idea From the Life Members

The ASCE Life Members' Public Image Committee request that members take their (to be discarded) Civil Engineering magazines to their doctor's office or barber shop and merge them with the stack of magazines. We feel that this will be an effective way to make the general public more aware of what civil engineers do.

Find out the latest Section & Branch news @ [www.ascelasection.org](http://www.ascelasection.org)



# Emergency Supplies Checklist

*The first 72 hours after a major emergency or disaster are critical. Electricity, gas, water, and telephones may not be working. In addition, public safety services such as police and fire departments will be busy handling serious crises. You should be prepared to be self-sufficient - able to live without running water, electricity and/or gas, and telephones - for at least three days following a major emergency. To do so, keep the following on hand in a central location:*

## Can You Go it Alone for Three Days?

### Essentials

- Water - One gallon per person per day (a week's supply of water is preferable)
- Water purification kit
- First aid kit, freshly stocked
- First aid book
- Food
- Can opener (non-electric)
- Blankets or sleeping bags
- Portable radio, flashlight, and spare batteries
- Essential medications
- Extra pair of eyeglasses
- Extra set of house and car keys
- Fire extinguisher - A-B-C type
- Food, water, and restraint (leash or carrier) for pets
- Cash and change
- Baby supplies: formula, bottle, pacifier, soap and baby powder, clothing, blankets, baby wipes, disposable diapers, canned food and juices

### Sanitation Supplies

- Large plastic trash bags for waste; tarps and rain ponchos
- Large trash cans
- Bar soap and liquid detergent
- Shampoo
- Toothpaste and toothbrushes
- Feminine hygiene supplies
- Toilet paper
- Household bleach

### Safety and Comfort

- Sturdy shoes
- Heavy gloves for clearing debris
- Candles and matches
- Light sticks
- Changes of clothing
- Knife or razor blades
- Garden hose for siphoning and firefighting
- Tent
- Communication kit: paper, pens, stamps

### Cooking

- Plastic knives, forks, spoons
- Paper plates and cups
- Paper towels
- Heavy-duty aluminum foil
- Camping stove for outdoor cooking (caution: before using fire to cook, make sure there are no gas leaks; never use charcoal indoors)

### Tools and Supplies

- Axe, shovel, broom
- Adjustable wrench for turning off gas
- Tool kit including a screwdriver, pliers and a hammer
- Coil of 1/2" rope
- Plastic tape, staple gun, and sheeting for window replacement
- Bicycle
- City map

**For more info, visit [www.calema.ca.gov](http://www.calema.ca.gov)**

## Announcement Of Nominations Of The Los Angeles Section Officers For The Term Of Office Beginning October 2010

The Los Angeles Section Nominating Committee has recommended the following nominees to the Board of Directors, for the slate of officers for the term beginning October 2010:

**President-Elect** (for a 3-year term; President-Elect, President, and Past President):

- John Hogan, P.E.

**Secretary** (for a two year term):

- Janice Horcasitas, P.E.

**Vice President Technical Groups** (for a two year term):

- Bill Flores, P.E.

In accordance with Article 4, Section 4.3.6, of the current Los Angeles Section Bylaws,

Additional nominations for each office to be filled may be made by a petition signed by no less than fifty (50) Voting Members of the Section provided that such a petition is accompanied by a written acceptance of the nomination by the nominee and is filed with the Secretary within 30 days after the announcement of the nominees.

The Voting Member grades, as defined in the Los Angeles Section Constitution, Article 2, Section 2.2.1, are Associate Member, Member, Fellow Member, and Distinguished Member, whose dues are current or who are granted a Section dues exemption.

Petitions are due within 30 days of the distribution date of this newsletter announcement and should be submitted to:

Secretary, Los Angeles Section ASCE  
c/o Gayle Stewert Enterprises, Inc.  
1415 Warner Ave.  
Tustin, CA 92780

### DISASTER TRAINING CLASS

Friday, May 14      in Long Beach.  
Thursday, May 20   in Ontario  
Friday, June 25     in Ventura  
Friday, July 16     in San Bernardino

If interested contact  
Jack Rolston  
818-345-9199  
ascedisaster@earthlink.net

## PRESIDENT'S MESSAGE

*continued from page 1*

response phase to be a safety evaluator of buildings and the built environment. However, in order to volunteer, you first must take a Safety Assessment Program Evaluator class taught by a trainer certified by Cal EMA. If you are a California Registered Civil, Structural, or Geotechnical Engineer, a Certified Geologist or Architect, you are qualified to take the class. The training is done by your ASCE colleagues and takes about 4 to 5 hours. See the notice in this newsletter for further information, or contact Jack Rolston, Chair of the Los Angeles Section Disaster Preparedness Committee, or your Branch President, to find out when the next class will be given your area. If you put together a group of ten or more people interested in taking the class in your office, the trainer will come to your location. After being trained you could expect a volunteer assignment to be anywhere in California which could last for a few days to a week (or more, if you are willing). Expenses are reimbursed.

To learn more about Disaster Preparedness go to [www.calma.ca.gov](http://www.calma.ca.gov). Since May is disaster preparedness month, this is the month to get inspired to get your supply kit together and sign up for the Evaluator class. Be prepared!

Enjoy your newsletter. If you have any questions and comments please feel free to send me an e-mail at [jay\\_higgins@urscorp.com](mailto:jay_higgins@urscorp.com). Articles for the Newsletter may be submitted to the Newsletter Editor, Cris Liban, at [LibanE@metro.net](mailto:LibanE@metro.net).

## ATTENTION!

**AN ADDRESS CHANGE IS MORE  
IMPORTANT THAN YOU THINK!**

**You've got the control  
at your fingertips!**

- Mailing Address
- Phone Number
- E-Mail Address

**WWW.ASCE.ORG/MYPROFILE**  
**(800) 548-ASCE (2723)**  
**(703) 295-6300**

## DISASTER TRAINING

Classes are being organized for volunteers to help in the event of a major disaster under the auspicious of the State of California Emergency Management Agency (Cal EMA). Classes will be held in ASCE Branch areas when there are sufficient requests. Qualified individuals are California Registered Civil, Structural, Geotechnical, Certified engineering Geologists, or Architects. If you are interested in attending a class, or are interested in arranging a class, please contact the ASCE Disaster Preparedness Committee Chairman.

There is no charge for the class. The class lasts 4 or 5 hours  
The Class can commence as early as 8 AM or after work.  
Monday through Friday or on Saturday

Classes will be given for VOLUNTEERS from professional organizations to assess damage, and COORDINATORS from City or County to direct Volunteers for their area. Coordinators may act as Volunteers outside of their area of expertise.

To register for the class submit your name along with your telephone number and e-mail address. You will be contacted when 10 or more request a class. The maximum number in the class should not exceed 20.

If your Branch, or Firm would like to offer the use of its facilities for a class, please register and provide the name of contact person, phone, and E-mail. You will be contacted to make arrangements.

Thank you for your support.  
Jack W. Rolston, Chair 818-903-5225 cell  
818-345-9199 ph • 818-345-5283 fx  
ascedisaster@earthlink.net

[www.structuralsolutions.com](http://www.structuralsolutions.com)

# 2010 STRUCTURAL ENGINEERING REVIEW SEMINARS & MANUAL

BYA Publications is pleased to announce the 10<sup>th</sup> consecutive year of the most comprehensive and value added series of structural engineering seminars in California. The 11 session program is comprised of detailed and interactive presentations of a selection of problems and topics included in the California and the NCEES Structural Engineer exams. Also included are discussions of recent development in structural and seismic engineering and the important State amendments. **These seminars also provide the best in-depth review of the latest code provisions for those not considering taking the S.E. exam.**

**“Register early and save up to \$400”**

All classes are on Saturdays or Sundays from 9:00 a.m. to 4:00 p.m.  
At the La Quinta, 3 Centerpointe Drive, La Palma, CA 90623, Phone: (714) 670-1400

May 1	Wind & Seismic Provisions	Ben Yousefi, MS, SE
May 23	Steel Design, Part I	Dr. Michael Engelhardt, Ph.D., PE
June 20	Advanced Analysis/Dynamics	Dr. Farzad Naeim, Ph.D., SE, Esq.
June 26	Concrete Design, Part I	Dr. Cheng Ming Lin, Ph.D., S.E
July 10	Wood Design (CBC/IBC)	Kelly Cobeen, MS, SE
August 7	Masonry Design (CBC/IBC)	Dr. Chukwume Ekwueme, Ph.D., SE
August 22	Steel Design, Part II	Dr. Michael Engelhardt, Ph.D., PE
August 28	CBC Amendments, New Buildings	Chris Tokas, MS, SE
August 29	CBC Amendments, Existing Bldgs	Chris Tokas, MS, SE
September 11	Concrete Design, Part II	Dr. Cheng Ming Lin, Ph.D., S.E
October 2	General Overview/ All topics	Ben Yousefi, MS, SE

For complete registration information please check our web site  
[www.strcuturalsolutions.com](http://www.strcuturalsolutions.com)





**American Society of Civil Engineers (ASCE)**  
**6<sup>th</sup> International Engineering  
 and Construction Conference**  
**Advances in Affordable Housing  
 & Green Construction**  
**Cairo, Egypt-June 28-30, 2010**

**Local Organization Contact Information**

**Prof. Khalid M. ELZahaby**

**Dr. Mohamed A Zaki**

Housing & Building National Research Center  
 87 El-Tahrir St. Dokki, Giza -Egypt

[www.hbrciecc6.com](http://www.hbrciecc6.com) • [hbrcontact@hbrciecc6.com](mailto:hbrcontact@hbrciecc6.com)

Phone: +20-2-37617102, 37617092 • Fax: +20-2-33351564

## **KPFF CONSULTING ENGINEERS**

KPFF Consulting Engineers seeks motivated and energetic structural engineers. 2+ yrs of structural design experience with steel, concrete, masonry and timber desired. B.S., M.S. degree; a P.E. license a plus. Excellent communication and teamwork skills are essential. Substantial growth opportunity for all levels, and the opportunity to work on a wide variety of interesting and challenging projects. Please contact, fax or email resume to the following:

**For Los Angeles:**

Ms. Krystle Tabangura

**KPFF Consulting Engineers**

6080 Center Drive, Ste 300

Los Angeles, CA 90045

Ph: 310- 665-1536

Fx: 310-665-9070

Email: [ktabangura@kpff-la.com](mailto:ktabangura@kpff-la.com)

**For Pasadena:**

Ms. Tamara Kealty

**KPFF Consulting Engineers**

301 N. Lake Avenue, Ste 550

Pasadena, CA 91101

Ph: 626-578-1121

Fx: 626-578-9121

Email: [tkealty@kpff-pas.com](mailto:tkealty@kpff-pas.com)

**[www.kpff.com](http://www.kpff.com)**

## **Semi-Retired Civil Engineer**

Semi-Retired Civil Engineer available for short term/long term commitments. **California P.E. with 40+ years of varied experiences and responsibilities, including claims consulting and expert witness testimony. C.V. and references will be available upon your request.**

**E-mail: [evnel@aol.com](mailto:evnel@aol.com)  
 Cell phone: 323-356-7814**

## **HYDROLOGY/HYDRAULICS SOFTWARE**

- *Automatic English-to-Metric Conversion*
- *Used by Cal Trans, Government Agencies*

### **WSPGW for Windows**

Water Surface Pressure Gradient,  
 FEMA Approved

### **Rational/Modified Rational Hydrology Methods**

For Los Angeles, Riverside, San  
 Bernardino, San Diego, Orange &  
 Kern Counties

### **Unit Hydrograph Hydrology Method, Flood Hydrograph Routing, Basin Analysis**

Multi-Day Storm Event Analysis

### **Steady-State Hydraulics, Street Inlets, Pumps, Etc.**



\* FEMA Approval for WSPGW Only.



**CIVIL DESIGN<sup>®</sup>**  
 Software for Engineers. By Engineers

**Tel 909.885.3806 Fax 909.381.1721 [www.civildesign.com](http://www.civildesign.com)**

**AES Advanced Earth Sciences, Inc.**  
Geotechnical and Environmental Consultants

Kris Khilnani, PE, GE - President  
Dr. Suji Somasundaram, PE, GE - Principal Engineer  
Grant Miller, PG, CEG - Principal Geologist

20 Fairbanks (949) 458-3832  
Suite 178 Fax: (949) 458-1046  
Irvine, CA 92618 Website: www.aesciences.com

DMJM HARRIS | AECOM

Ranked #1 in Transportation by ENR magazine, DMJM Harris is always searching for new talent.

For more information on career opportunities, please contact: jane.griffin@dmjmharris.com.

www.dmjmharris.com

**GPI**  
GEOTECHNICAL PROFESSIONALS, INC.

James E. Harris, G.E.  
Byron Konstantinidis, G.E.  
Paul R. Schade, G.E.

5736 Corporate Ave.  
Cypress, California 90630  
(714)220-2211 Fax (714)220-2122  
www.gpi-ca.com

**OSBORN K&A**  
FALLOU  
Engineering, Inc.

357 N. Sheridan St. 117  
Corona, CA 92880  
Tel: (909) 279-1800  
Fax: (909) 279-4380  
Email: ka@kaengineering.com

- Engineering
- Land Planning
- Surveying

**AEI-CASC CONSULTING**  
ENGINEERING OUR FUTURE

CIVIL ENGINEERING  
PLANNING  
ENVIRONMENTAL ENGINEERING  
SURVEYING

CORPORATE OFFICE  
937 S. Via Lalo, Suite 500  
Colton, CA 92324  
(909) 783-0101

Offices throughout California  
www.aei-casc.com

**DUDEK** ENGINEERING + ENVIRONMENTAL

Creatively solving water and wastewater resources challenges for municipal agencies.

Plan | Design | Construct | Manage

WWW.DUDEK.COM San Diego | Los Angeles | Riverside  
800.450.1818 Orange | Santa Barbara | Placer

**gsi** Geotechnical Stabilization, Inc.

Amer R. Al-Abisi, P.E.  
President

Chemical Grouting Compaction Grouting  
PressGrout Piles Lense Grouting

1558 Sterling Court • Escondido, CA 92029-1208  
760/489-6696 • FAX 760/489-6697

**KTEV** KEHOE TESTING & ENGINEERING

- Cone Penetration Testing (CPT)
- Direct Push Soil, Water & Vapor Sampling
- Truck Mounted, Track & Ltd. Access Rigs

Soil Testing & Sampling Services  
for Geotechnical & Environmental Consultants

5415 Industrial Drive  
Huntington Beach, CA 92649-1518  
(714) 901-7270 (714) 901-7289 fax

**STEVE KEHOE, P.E.**  
PRESIDENT

**AKEL**  
ENGINEERING GROUP, INC.

Water Resources  
Infrastructure Modeling  
and Master Planning

Tony Akel, P.E.  
Principal  
Phone: 559.436.0600  
Fax: 559.436.0622  
Cell: 559.593.5937  
Email: take@akeleng.com

7075 N. Howard St. Suite 102  
Fresno, California 93720  
www.akeleng.com

**Earth Mechanics, Inc.**  
Geotechnical and Earthquake Engineering

Foundation Design  
Seismic Evaluation  
Soil-Structure Interaction  
Field Investigation and Laboratory Testing  
Grading and Foundation Inspections

www.earthmech.com  
Fountain Valley Los Angeles San Bernardino Oakland San Diego  
(714) 751-3826 (310) 519-1197 (909) 890-1551 (510) 562-8833 (760) 736-8222

**GREGG** Phone: (562) 427-6899  
Fax: (562) 427-3314  
Email: info@greggdrilling.com  
Web Site: www.greggdrilling.com

**GREGG DRILLING & TESTING, INC.**

- ENVIRONMENTAL and GEOTECHNICAL DRILLING
- WELL INSTALLATION
- CONE PENETRATION TESTING

2726 WALNUT AVE. • SIGNAL HILL, CA 90755

**KRIEGER & STEWART** INCORPORATED  
ENGINEERING CONSULTANTS

- WATER
- WASTEWATER
- RECYCLED WATER
- STORM WATER

Riverside, CA • (951) 684-6900  
www.kriegerandstewart.com

www.amecgeomatrixinc.com

**amec**  
Geomatrix

James J. Weaver, PE, GE  
(949) 642-0245 - office  
(949) 642-4474 - fax

510 Superior Avenue  
Suite 200  
Newport Beach, California  
USA 92663-3627

- Environmental Science and Engineering
- Geotechnical Engineering
- Earthquake-Related Services
- Air Toxics and Health Risk Assessment

**EARTH SYSTEMS**

Geotechnical Engineering  
Engineering Geology  
Environmental Consulting  
Materials Testing & Inspections

Offices throughout California  
Los Angeles Area Office (818) 901-8075  
www.earthsystems.com

**GROUP** GEOTECHNICAL ENGINEERING  
MATERIALS TESTING & INSPECTION  
Serving Southern California since 1986

Michael Reader, G.E.  
Principal Engineer  
Tom Swanko, G.E.  
Principal Engineer

Group Delta Consultants, Inc.  
Los Angeles County: (310) 320-5100  
Orange County: (949) 609-1020  
San Diego County: (858) 524-1500  
www.GroupDelta.com

**Leighton Consulting, Inc.**  
866-LEIGHTON

Thomas C. Benson, Jr., PE, GE, REA | President and CEO  
www.leightongroup.com

Geotechnical | Environmental | Testing and Inspection

Irvine  
Bakersfield  
Los Angeles  
Palm Desert  
Rancho Cucamonga  
San Diego  
Santa Clarita  
Temecula  
Ventura

**Cannon**  
ENGINEERING • PLANNING • CONSTRUCTION

Public Infrastructure; Land Development;  
Education; Energy; Survey & Mapping;  
Aerospace/Defense

P 805.544.7407  
www.CannonCorp.us

**FUSCOE**  
ENGINEERING

www.fuscoe.com  
949.471.1960

full circle thinking

- land development
- entitlement services
- survey & mapping
- water quality assurance
- eco-adaptive design
- groundwater services
- environmental engineering
- GIS & CADD graphics

Irvine • San Diego • Inland Empire • Palm Springs

**Hall & Foreman, Inc.**  
Engineering • Surveying • Planning • Landscape Architecture

visit us online for job listings at  
www.hfinc.com  
800.544.2114

Offices throughout Southern California including Irvine, Rancho Cucamonga,  
Santa Clarita, Temecula, Victorville, and Woodland Hills

**LGC**  
Geotechnical Companies, Inc.  
Website: www.lggeo.com

- LGC COASTAL (Orange County): (949) 369-6141
- LGC INLAND (Riverside County): (951) 461-1919
- LGC VALLEY (Ventura/LA Counties): (805) 579-3434

**Converse Consultants**  
Geotechnical Engineering  
Environmental & Groundwater Science  
Inspection & Testing Services

Monrovia Office (626) 930-1200 Costa Mesa Office (714) 444-9660  
Fax (626) 930-1212 Fax (714) 444-9640

Redlands Office (909) 796-0544 Sacramento Office (916) 331-5444  
Fax (909) 796-7675 Fax (916) 331-6444

www.converseconsultants.com

**GENTERRA Consultants, Inc.**  
Engineering & Environmental Services

Irvine • Oxnard • San Diego • Corona • Roseville

Joseph J. Kulikowski, PE, GE  
Founder, President & Principal Engineer

15375 Barranca Pkwy • Suite K-102 • Irvine, CA 92618  
Phone (949) 753-8766 • Fax (949) 753-8887  
Email: joekul@genterra.com • Web Site: www.genterra.com

**HDR** ONE COMPANY | Many Solutions™

SERVICES:  
Water/Wastewater • Transportation  
Environmental • Construction Management

801 So. Grand Avenue, Suite 500, Los Angeles, CA 90017  
213.239.5800 www.hdrinc.com

**LIN Consulting, Inc.**  
Traffic, Civil and Electrical Consulting Engineers

William Sun, P.E., T.E.  
Senior Project Manager

21660 E. Copley Drive, #270, Diamond Bar, CA 91765-4173  
Tel (909) 396-6850 ext. 105 • Fax (909) 396-8150  
E-mail: wsun@linconsulting.com

www.dcacivileng.com

**DCA CIVIL ENGINEERING GROUP**  
SURVEYING • MAPPING • LAND PLANNING

(310) 327-0018  
FAX (310) 327-0175

**Geomatrix**

- Environmental Science and Engineering
- Geotechnical Engineering
- Earthquake-Related Services
- Air Toxics and Health Risk Assessment

James J. Weaver, P.E., G.E.  
510 Superior Avenue, Suite 200 Newport Beach, CA 92663  
(949) 642-0245 - office (949) 642-4474 - fax

**HESS ENGINEERING INC**  
Structural Engineers

Richard L. Hess, S.E., SECB, FASCE  
President

www.HessEng.com

3347 Carritos Avenue • Los Alamitos, CA 90720-2105  
(562) 799-9787 • FAX (562) 799-4973 • Cell (310) 717-4916

**LaBelle • Marvin**  
PAVEMENT ANALYSIS, DESIGN, TESTING & INSPECTION SINCE 1969

Steven R. Marvin, P.E.  
President

2700 S. Grand Ave.  
Santa Ana, CA 92705  
Ph (714) 546-3468  
Fax (714) 546-5841  
smarvin@labellemarvin.com  
www.labellemarvin.com

**DIAZ • YOURMAN**  
& ASSOCIATES

Christopher M. Diaz, P.E.  
Principal

Geotechnical Services

1616 East 17th Street, Santa Ana CA 92705-9509  
Tel. (714) 245-2920 • Fax (714) 245-2950 • Mobile (714) 412-2093  
chris@diazyourman.com www.diazyourman.com

**GeoPentech**  
Geotechnical & Geoscience Consultants

- \* Geotechnical Engineering
- \* Geo-Earthquake Engineering
- \* Seismic Hazards Evaluation
- \* Soil Dynamics/Vibrations
- \* Engineering Geology
- \* Hydrogeology
- \* Seismic Geology
- \* Forensic Studies

525 N Cabrillo Park Drive, Suite 280  
Santa Ana, California 92701  
Phone: (714) 796-9100; FAX: (714) 796-9191  
Web Site: www.geopentech.com

**JENSEN DESIGN & SURVEY, INC.**  
www.jdscivil.com

1672 Danton Street  
Ventura, California 93003

Local 805 654 6977  
FAX 805 654 6979  
State 800 676 1916

“Designing for the Future”

The leader in civil engineering and surveying providing professional state-of-the-art services, commitment to excellence, and timely responsiveness.

Engineers Planners Surveyors

**MACTEC**  
GEOTECHNICAL • ENVIRONMENTAL • HAZARDOUS MATERIALS • CMT

Perry A. Malljon, G.E.  
Senior Vice President  
pomaljon@mactec.com

Marshall Law, Ph.D., G.E.  
Senior Principal / Vice President  
mlaw@mactec.com

Martin B. Hudson, Ph.D., G.E.  
Chief Engineer  
mbhudson@mactec.com

Hedy Abedi, Ph.D., P.E.  
Director of Environmental Services  
hubs@mactec.com

Edward C. Trassors, P.E.  
Principal Materials Engineer  
etrassors@mactec.com

5628 E. Slouson Avenue • Los Angeles, California 90040-2922  
323.889.5300 • fax 323.721.6700 • www.mactec.com

**Noise & Air Studies**  
 All Your Noise and Air Assessment Needs Since 1981

**Mestre Grove Associates**  
 Contacts: Matt Jones, P.E.  
 Fred Greve, P.E.

27812 El Lazo Road  
 Laguna Niguel, CA 92677  
 Tel: (949) 349-0671  
 www.mga.com

*Studies for EIRs and EISs  
 Caltrans/FHWA Assessments  
 Noise Ordinance Compliance  
 Air Toxics/Health Risk Assessments  
 Noise Elements*

**The PRESSURE**  
**GROUT COMPANY**  
**Steven C. Chandler**  
 Branch Manager

1976 National Avenue  
 Hayward, CA 94545-1709  
 510-887-2244  
 www.pressuregrout.com • e-mail: pcc@pressuregrout.com

1330 W. Gayford Street  
 Long Beach, CA 90813-1321  
 562-432-4100

**VA CONSULTING INC.**  
 Max Vahid, P.E.  
 President and CEO  
 maxvahid@vaconsultinginc.com  
 Tel: 949.474.1400 Fax: 949.261.8482

Engineering Services in:  
 Flood Control | Drainage | Water Quality  
 Potable Water | Recycled Water | Wastewater  
 Transportation | Traffic | Plan Checking  
 Structural | Land-Use Planning | Site Development  
 Surveying | Construction Management

Offices in: Irvine - Corona - Palm Desert

**WALLACE GROUP**

CIVIL ENGINEERING  
 CONSTRUCTION MANAGEMENT  
 LANDSCAPE ARCHITECTURE  
 MECHANICAL ENGINEERING  
 PLANNING  
 PUBLIC WORKS ADMINISTRATION  
 SURVEYING / GIS SOLUTIONS  
 WATER RESOURCES

805 544-4011 BEST FIRMS TO WORK FOR  
 www.wallacegroup.us CE NEWS • TOP 50 • 2007

**NMG**  
 Geotechnical, inc.

**Hayim Ninyo**  
**Ted Miyake**

17991 Fitch, Irvine, CA 92614  
 Phone (949) 442-2442 Fax (949) 476-8322  
 E-Mail: hninyo@nmgeotechnical.com  
 www.nmgeotechnical.com

**PSOMAS**

Land Development GIS  
 Surveying & Mapping Water & Wastewater  
 Construction Management Transportation  
 Natural Resources Special District Financing

California | Colorado | Arizona | Utah | Nevada | Mexico  
 www.psomas.com

# MATERIALS SUBMISSION INFORMATION

If you'd like to have your business card or company information listed in the Professional Directory, please contact **Lorena Arce** at **(562) 448-4526** or email her at **lorena.arce@hilti.com** for rates and deadlines.

All graphic materials submitted for use in this newsletter should have all fonts outlined, and links included; .eps files preferred. Other formats are: InDesign CS2, Adobe Illustrator CS2; additional acceptable file formats are: .jpg, .tif and .pdf files. Images embedded in Microsoft Word documents should be sent separately, at a minimum resolution of 150 dpi at the display size desired. Collected files, including links and fonts, should be compressed and emailed, or sent on zip disk (provide return address). Business cards can be submitted electronically as well, or send clean, crisp, b&w laser print, unfolded.

**NORRIS-REPKE**  
 Engineers & Land Surveyors

Capital Improvement Design  
 City Engineering  
 Land Surveying & GIS Services  
 Construction Management  
 Water and Sewer  
 Building & Safety  
 Engineering Software

TEL: 714-973-2230  
 FAX: 714-973-2263  
 www.norrisrepke.com  
 400 N. Tustin Avenue, Suite 230, Santa Ana, CA 92705

**RBF CONSULTING**  
 PLANNING • DESIGN • CONSTRUCTION

Providing innovative, timely and cost effective solutions to today's design challenges through personalized client service **www.RBF.com**

Offices located throughout California, Arizona and Nevada • 800-479-3808

**PACE**  
 PACIFIC ADVANCED CIVIL ENGINEERING, INC.

Innovative Water Resource Design Solutions  
 in Partnership with Nature

- Stormwater Management
- Wastewater / Potable Water
- Lakes / Water Features

www.p-a-c-e.com  
 17520 Newhope St., Suite 200, Fountain Valley, CA 92708  
 Main: 714.481.7300 Fax: 714.481.7299

P: (805) 543-1794 | www.rmdesign.com

**rrmdesigngroup**  
 creating environments people enjoy®

Community | Civic & Public Safety | Education | Recreation | Urban  
 architects | engineers | landscape architects | planners | surveyors

**PB**  
 100 YEARS

**Parsons Brinckerhoff**

444 South Flower Street  
 Suite 3700  
 Los Angeles, CA 90071  
 Direct: 213-362-9475  
 Fax: 213-362-9480  
 Givens@pbworld.com

**Jerry M. Givens**  
 Senior Vice President &  
 Local Business Executive

Registered to ISO 9001  
 File No. A9115

**SA ASSOCIATES**  
**Shahnawaz Ahmad**  
 CONSULTING ENGINEERS

Los Angeles County:  
 1130 W. Huntington Drive  
 Unit 12, Arcadia, CA 91007  
 Tel 626.821.3456  
 Fax 626.445.1461  
 Mobile 626.826.3456 • e-mail: saahmad@saassociates.net

Orange County:  
 1661 N. Raymond Avenue  
 Suite 100, Anaheim, CA 92801  
 Tel 714.871.9083  
 Fax 714.871.3652

**Penfield & Smith**  
 Engineering Tomorrow - Today

Santa Barbara Corporate HQ (805) 963-9532  
 Central Coast Regional Office (805) 926-2345  
 Ventura County Regional Office (805) 981-0706  
 Antelope Valley Regional Office (661) 945-7592

- Civil Engineering
- Surveying & Mapping
- Land Use Planning
- Construction Management & Inspection
- Traffic & Transportation Engineering
- Structuration Planning
- Structures Engineering
- Geographic Information Systems

www.penfieldsmith.com

Civil • Environmental • Water Resources  
 Surveying • Construction Management • Program Management

**TKE ENGINEERING, INC.**

4446 Central Avenue • Riverside California 92506  
 (951) 680-0440 • Fax (951) 680-0490  
 www.tkeengineering.com

**PETRA**  
 past + present + future  
 U.S. in our science

**Geologists**  
**Geotechnical Engineers**  
**Environmental Scientists** 888-243-6100

Debanik Chaudhuri  
 Chief Geotechnical Engineer  
 562.426.3355 phone  
 562.426.6424 fax  
 562.355.8635 cell  
 dchaudhuri@twininglabs.com  
 www.twininglabs.com

**TWINING LABORATORIES**  
 OF SOUTHERN CALIFORNIA

2883 East Spring Street  
 Suite 300  
 Long Beach, CA 90806

Long Beach • San Bernardino • San Diego • Ventura • Sacramento

**PERLITER & INGALSBE**  
 CONSULTING ENGINEERS

Engineering Investigations, Designs and Construction Services for:

- Potable Water
- Recycled Water
- Wastewater
- Storm Drainage (626) 398-9111

2389 Lincoln Avenue, Altadena, California 91001  
 Facsimile: (626) 398-9115 Website: www.P-and-I.com

**URS**  
**Garry Lay, PE, GE**  
**Farid Motamed, PE, GE**

2020 East First Street  
 Suite 400  
 Santa Ana, CA 92705  
 Tel: 714.835.6886  
 Fax: 714.973.4062

915 Wilshire Boulevard  
 Suite 700  
 Los Angeles, CA 90017  
 Tel: 213.996.2200  
 Fax: 213.996.2374

www.urscorp.com



## HYDROLOGY/HYDRAULICS/ENVIRONMENTAL SOFTWARE

# ADVANCED ENGINEERING SOFTWARE

P.O. Box 4962  
 GARDEN GROVE, CA 92842-4962  
 TEL/FAX: (714) 780-8990

TO REVIEW AES PROGRAM FEATURES AND CAPABILITIES, VISIT:  
<http://www.advancedengineeringsoftware.com>

- Software written/supported by **AUTHORS OF THE HYDROLOGY MANUALS.**
- Software used throughout Southern California since 1980 by private and government agency engineers.
- Used to develop 55 City-Wide and County-Wide Master Plans of Drainage throughout California.

AES Program Developers & Support:  
 Theodore V. Hromadka II, Ph.D., Ph.D., P.E., P.H., LG, Professor Emeritus, CSUF; Johannes J. DeVries, Ph.D., P.E., Faculty, UC Davis;  
 Howard H. Chang, Ph.D., P.E., Professor, SDSU;  
 Paolo Zanetti, Ph.D., QEP, President, EnviroCOMP;  
 Robert J. Whitley, Ph.D., Professor Emeritus, UC Irvine;  
 Carlos Brebbia, Ph.D., Director, Wessex Institute of Technology;  
 Gary Guymon, Ph.D., P.E., Professor Emeritus, UC Irvine.

**NON-PROFIT  
 U.S. POSTAGE  
 PAID  
 PERMIT NO. 1441  
 SANTA ANA, CA**

**POSTMASTER: THIS CONTAINS TIME-SENSITIVE MATERIALS.  
 PLEASE DELIVER PROMPTLY.**



***Please contact ASCE Membership at  
 1-800-548-ASCE for any address changes.***

## ASCE OFFICERS AND DIRECTORS OF THE LOS ANGELES SECTION, FY 2009-2010

President	Jay H Higgins, P.E.	URS Corporation	(818) 406-4896	jay_higgins@urscorp.com
President-Elect	Greg Heiertz, P.E.	Irvine Ranch Water District	(949) 453-5560	heiertz@irwd.com
Past President	Don Sepulveda, P.E.	HNTB	(310) 846-1813	dsepulveda@HNTB.com
Secretary	Janice Horcasitas, P.E.	City of Bakersfield	(661) 326-3607	jhorcasi@bakersfieldcity.us
Treasurer	Gary Gilbert, P.E.	Diaz Yourman & Associates	(714) 245-2920	gary@diazyourman.com
Vice-President Student Activities	Karen Sepulveda	Bob Hope Airport	(818) 309-9649	kar@sepulvedas.net
Vice-President Technical Groups	Andy Machen, P.E.	Caltrans District 8	(909) 379-5744	andy_machen@dot.ca.gov
Desert Area	Clarence Martin, P.E.	City of L.A. Department of Water and Power	(760) 873-0342	Clarence.Martin@ladwp.com
Metropolitan Los Angeles	Serge Haddad, P.E.	City of L.A. Department of Water and Power	(213) 367-8774	Serge.Haddad@ladwp.com
Orange County Branch	Katherine Shinkai, P.E.	LPA	(949) 701-4033	katherine.shinkai@gmail.com
San Bernardino/Riverside Counties	Brian Wolfe, P.E.	City of Redlands	(909) 800-0178	bwolfe@cityofredlands.org
San Luis Obispo	Jeff Spannbaauer, P.E.	Cannon Associates	(805) 544-7407	jeffs@cannonassociates.us
Santa Barbara/Ventura Counties	Paul Callaway, P.E.	Green Mountain Engineering	(805) 654-2019	Paul.Callaway@ventura.org
Southern San Joaquin	Robin Dickerson, P.E.	RSD Civil Engineering	(661) 342-8787	rsd.civileng@gmail.com
Younger Member Forum	Marlon Calderon, P.E.	City of Los Angeles	(213) 473-6233	Marlon.calderon@lacity.org
Life Member Forum	Larry Lewis, P.E.	Retired/City of Los Angeles	(562) 927-2088	m13lewis@aol.com
Region 9 Governor	Shahnawaz, Ahmad, P.E.	SA Associates	(626) 821-3456	sahmad@saassociates.net

### NEWSLETTER INFORMATION

#### Publisher

ASCE LA Section  
 Gayle Stewart  
 1405 Warner Ave., Suite B  
 Tustin, CA 92780  
 Phone (714) 258-8306  
 Fax (714) 258-8391  
 E-mail: GStewart@associationplanet.com

#### Editor

Dr. Cris B. Liban, P.E.  
 LACMTA  
 One Gateway Plaza  
 Mail Stop 99-17-2  
 Los Angeles, CA 90012  
 Phone (213) 922-2471  
 FAX (213) 922-6875  
 E-mail: cliban@UCLAumni.net  
 Typesetting, Layout & Printing: The Center Quickprint



Please send all copy to the Editor by the first of the month preceding publication.

#### Identification Statement

ASCE Newsletter, (ISSN 0273-6233) is published monthly by ASCE, Los Angeles Section, 1405 Warner Ave. Tustin, California 92780. Subscription price included in Section dues of \$45.

#### Circulation

Circulated monthly (except for a joint July/August issue) to the 5,000 subscribing members of the Los Angeles Section, ASCE.

#### Advertising Rates

EMPLOYMENT ADS	DISPLAY ADS
\$75/column inch	1/8 page \$150
	1/4 page \$250
	1/2 page \$415
	1 page \$690

#### PROFESSIONAL DIRECTORY

\$350 per business card for a full year (Additional fees may be applied for typesetting. Please call for information.)

#### POSITION WANTED ADS

No cost to L.A. Section members.

For more advertising and billing information, please contact Lorena Arce, P.E., at (562) 448-4526 or [lorena.arce@hilti.com](mailto:lorena.arce@hilti.com)

National ASCE (800) 548-2723 (ASCE)  
 Access National ASCE at: [www.asce.org](http://www.asce.org)  
 L.A. Section web site at: [www.ascelasection.org](http://www.ascelasection.org)