

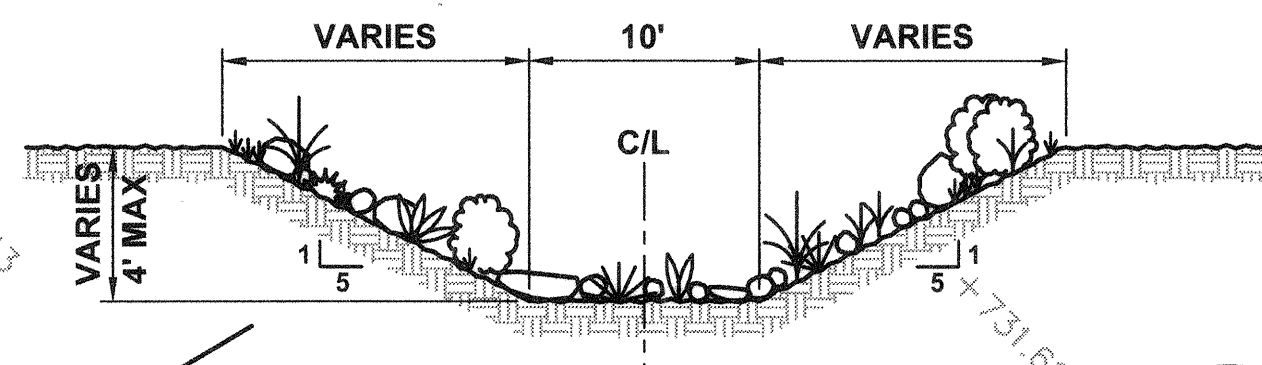
NOTE:
ELEVATIONS SHOWN WHERE COMPILED FROM AS BUILT INFORMATION PROVIDED BY THE COUNTY AND WAS COMPARED TO THE NEWLY SURVEYED TOPOGRAPHY.

NOTES

- 1 CONSTRUCT DECOMPOSED GRANITE EDUCATIONAL VIEWING AREA. SEE (1)
- 2 REMOVE, DISPOSE OF AND REPLACE EXISTING WOOD RAIL FENCE IN THIS AREA AS NEEDED. SEE (1)
- 3 CONSTRUCT DECOMPOSED GRANITE PARKING SPOT (20'W x 11'L x 6"D). (24)
- 4 PROPOSED 30' WIDE SITE CONSTRUCTION ACCESS.
- 5 RELOCATE EXISTING SIGN POST TO LOCATION SHOWN (1)
- 6 EXCAVATE TREATMENT SWALE TO LINE AND GRADES SHOWN. (9)
- 7 THE CONTRACTOR IS REQUIRED TO TAKE PRECAUTIONARY MEASURES TO PROTECT THE EXISTING TREES, CURB AND GUTTER, SIDEWALK, FENCES, ETC. DAMAGE TO THESE STRUCTURES DUE TO CONSTRUCTION ACTIVITIES SHALL BE REPAIRED AT THE CONTRACTOR'S EXPENSE AND TO THE SATISFACTION OF THE ENGINEER.

ALIGNMENT DATA

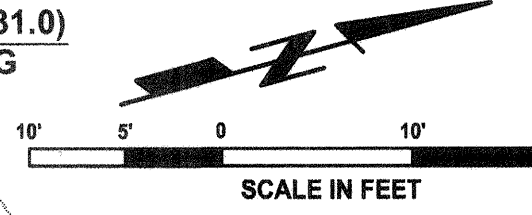
LINE DATA		CURVE DATA	
L1 N 52°06'00" W 10.33'	L2 N 74°36'00" W 72.47'	1 Δ= 57°21'05" R= 25.00' T= 13.67' L= 25.02'	2 Δ= 58°30'10" R= 25.00' T= 14.00' L= 25.53'
L3 N 17°14'55" W 55.18'	L4 N 41°15'15" E 68.47'	3 Δ= 64°08'45" R= 25.00' T= 15.67' L= 27.99'	
L5 N 74°36'00" W 70.76'	L6 N 82°54'00" E 8.80'		



NOTE:
REFER TO PLANTING PLANS SHT 7

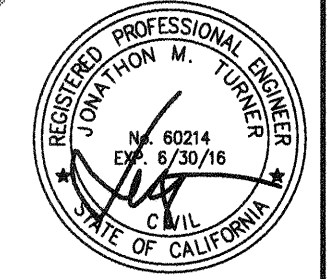
SECTION
SCALE: N.T.S.

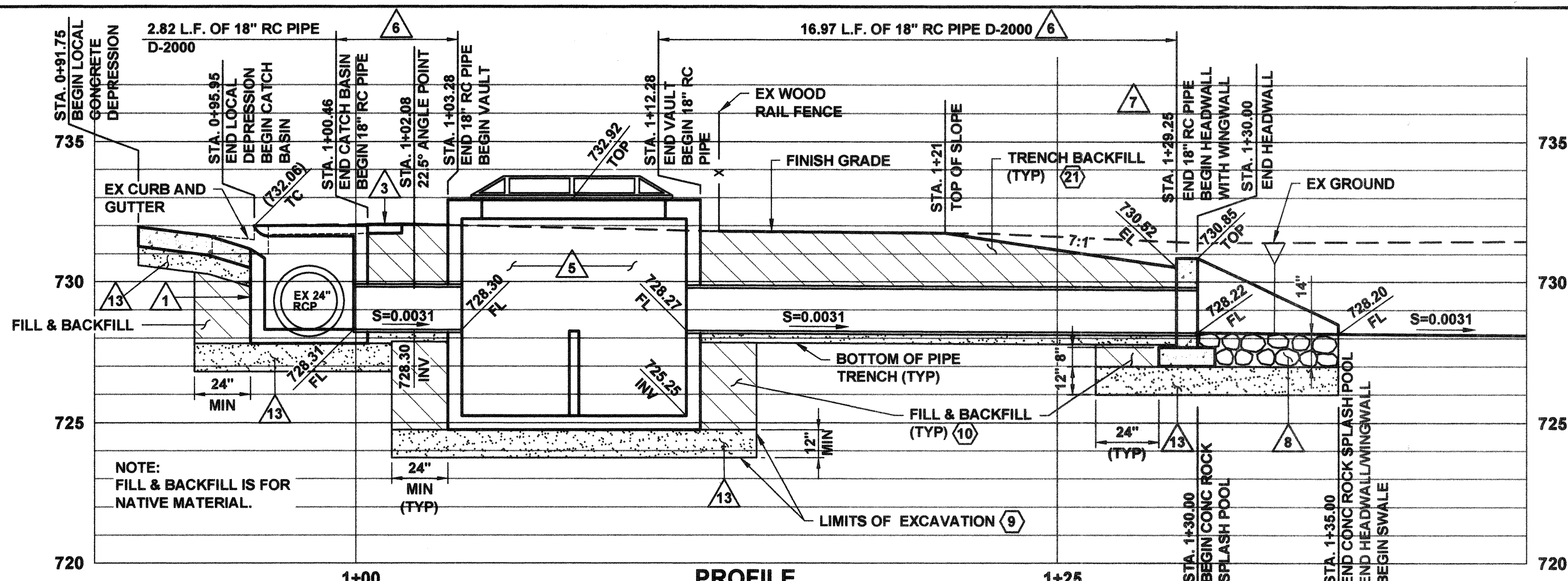
SITE PLAN



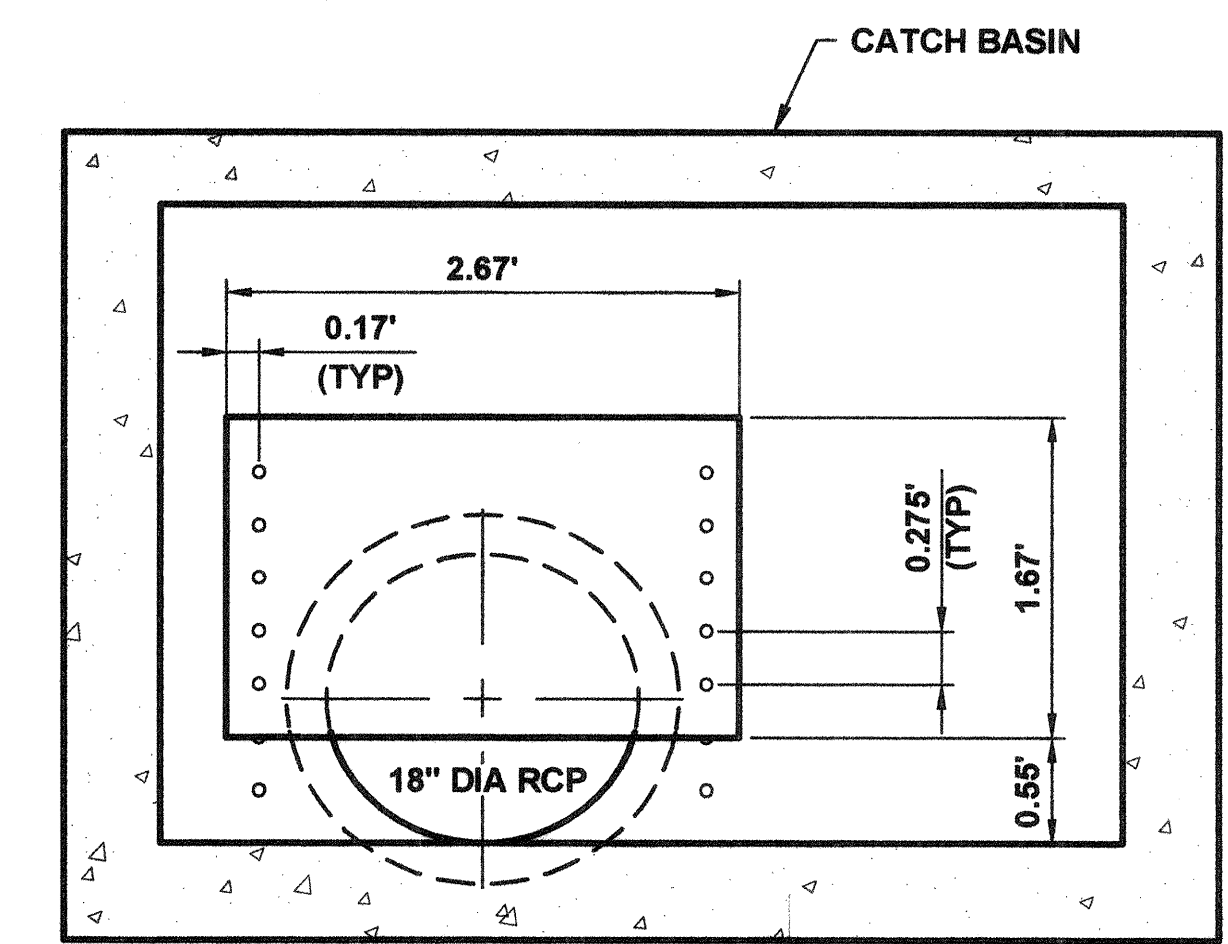
PLOT DATE: 3/20/15 FRED P:\PROJECTS\WMP007401 MEINERS OAKS SWALE DESIGN\CAD\PLANS\SET\SH1-02.DWG

D C B A Δ	REVISION	DESCRIPTION	APP.	DATE	PREPARED BY: PHOENIX CIVIL ENGINEERING, INC. 4532 TELEPHONE ROAD SUITE 113 VENTURA, CA 93003 (805) 658-6800	DESIGNED: JT	DRAWN: AR	CHECKED: JT	PROJECT NO. 3-18-15	DATE 3-26-2015	DATE 3/27/2015	DISTRICT DIRECTOR	COUNTY OF VENTURA PUBLIC WORKS AGENCY WATERSHED PROTECTION DISTRICT	SPEC. NO. WP15-14	PROJ. NO. 40545	URBAN LID RETROFIT AT MEINERS OAKS	SITE PLAN	SHEET 2	OF 8	DRAWING NO. Y-1-831

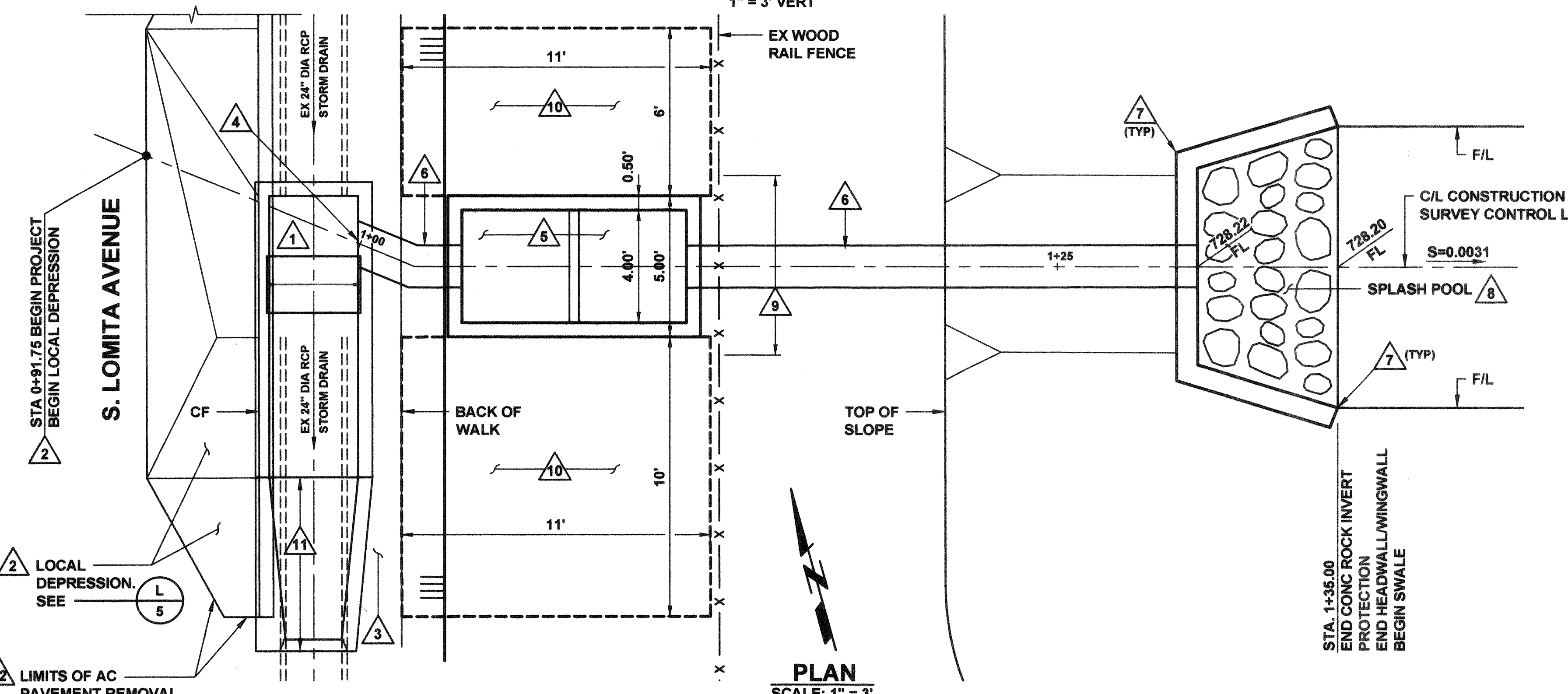




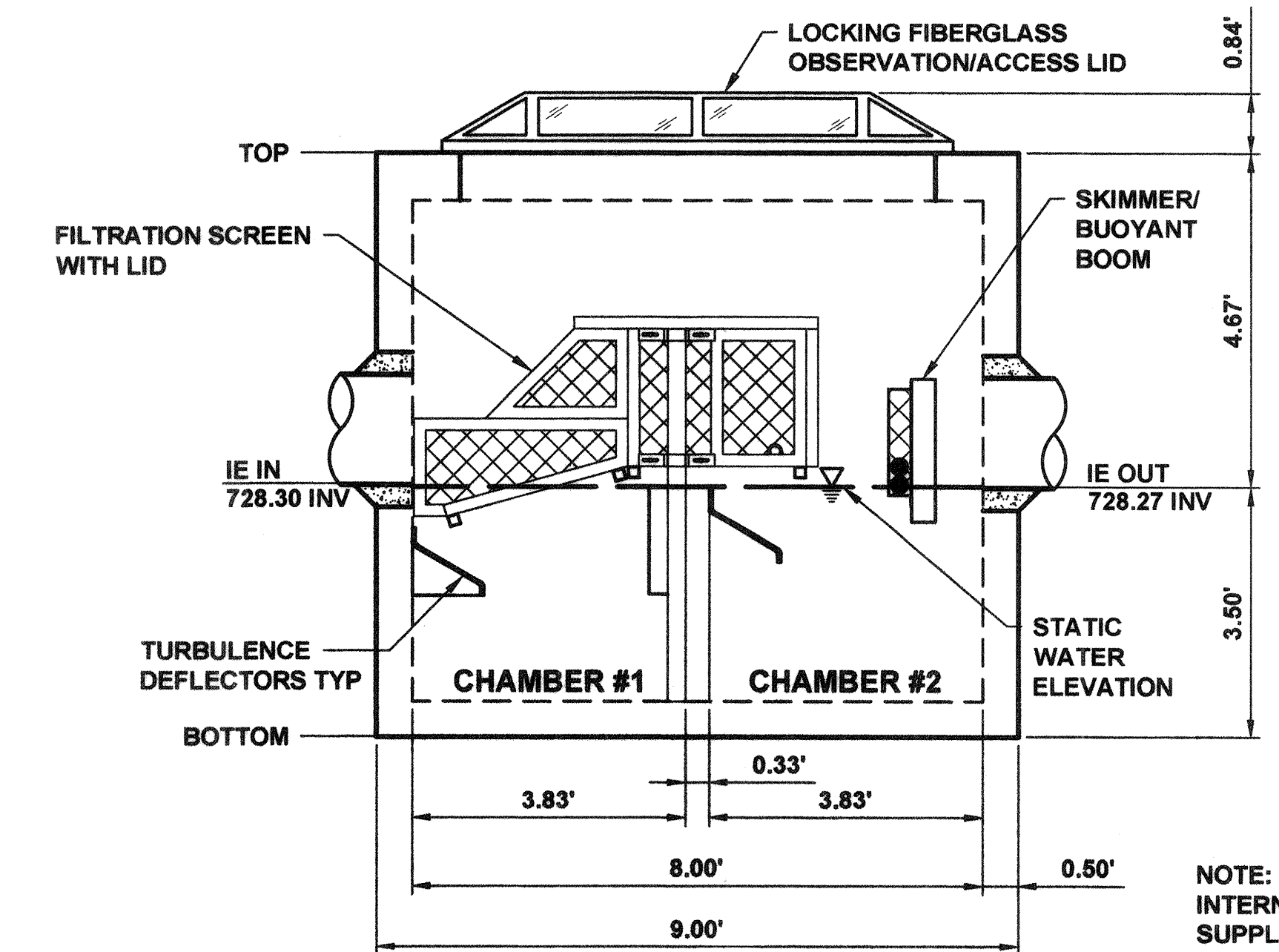
PROFILE
SCALE: 1" = 3' HORIZ
1" = 3' VERT



NOTE:
PLATE AND BOLTS PER SPECIFICATIONS. THREADED INSERTS SHALL BE SIMPSON BLUE BANGER HANGER.
STA 0+99.92
FLOW RESTRICTION PLATE DETAIL
SCALE: 1" = 1'



PLAN
SCALE: 1" = 3'



DUAL STAGE HYDRODYNAMIC SEPARATOR DETAIL
SCALE: 1" = 2'

NOTES

- 1 CONSTRUCT CATCH BASIN PER SPPWC STD PLAN 300-3, W=10', V=3.75', CURB OPENING = 4', (MODIFIED, SEE SHEET 5).
- 2 CONSTRUCT LOCAL DEPRESSION PER SPPWC STD PLAN 313-3, CASE A. (14)
- 3 CONSTRUCT SIDEWALK REPLACEMENT PER SPPWC STD PLAN 112-2. REMOVE AND DISPOSE OF SIDEWALK TO THE NEAREST JOINT. (12)
- 4 18" DIA RC PIPE CONNECTION TO CATCH BASIN PER SPPWC STD PLAN 308-2. SEE
- 5 INSTALL BIOCLEAN DUAL STAGE HYDRODYNAMIC SEPARATOR MODEL NSBB-4-8-84 WITH LOCKING FIBERGLASS VIEW HATCH. SEE
- 6 INSTALL 18-INCH DIA RC PIPE D-2000 PER VCWWD TRENCH PLATE No. 1. (21)
- 7 CONSTRUCT HEADWALL, H=3'-2", L=7'-0" PER CALTRANS STD D90 TYPE A. THE FINISH TOP ELEVATION OF THE HEADWALL AND WINGWALLS SHALL PROTRUDE 4 INCHES ABOVE THE FINISH ELEVATION OF THE SWALE SLOPES. (18)
- 8 CONSTRUCT 14" THICK ROCK FACING CLASS SPLASH POOL WITHIN THE LIMITS AS SHOWN HEREON. (23)
- 9 REMOVE, DISPOSE AND REPLACE EXISTING WOOD RAIL FENCE IN THIS AREA AS NEEDED. SEE
- 10 EDUCATIONAL VIEWING AREA. SEE
- 11 CONSTRUCT TRANSITION STRUCTURE PER SPPWC STD 342-2 (MODIFIED, SEE SHEET 5). SEE
- 12 SAWCUT, REMOVE AND DISPOSE OF ALL AC PAVEMENT INTERFERING WITH THE CONSTRUCTION OF CONCRETE LOCAL DEPRESSION AT CATCH BASIN. (7)
- 13 INSTALL 12" DEEP STABILIZING BASE MATERIAL. COMPACT TO 95% OF LAB MAX DENSITY. (26)
- 14 IT IS ANTICIPATED THAT BOULDERS MAY BE ENCOUNTERED DURING EXCAVATION ACTIVITIES. CONTRACTOR SHALL REMOVE AND DISPOSE OF ALL BOULDERS LARGER THAN 4 INCHES AND SHALL BACKFILL ALL VOIDS AS NEEDED. THE ENGINEER SHALL APPROVE THE FILL AND BACKFILL PRIOR TO USE.

LOW FLOW DIVERSION AND SWALE PRETREATMENT DETAIL
SCALE: 1" = 3'

PLOT DATE: 3/22/15 SAVE DATE: 3/22/15 117246 K:\PROJECTS\ZONE\VAL\TRENCH\TIMPS\VOCA\SUBAN_LID_RETROFIT_AT_MEINERS_OAKS\DESIGN\DRAWINGS\100_PERCENT_2015_03-28\AUTOCAD_PLEAS_SHT-03.DWG

D			
C			
B			
A			
REVISION	DESCRIPTION	APP.	DATE

PREPARED BY:
PHOENIX CIVIL ENGINEERING, INC.
4532 TELEPHONE ROAD SUITE 113
VENTURA, CA 93003
(805) 658-6800

DESIGNED: JT
DRAWN: AR
CHECKED: JT

DATE: 3-18-15
DATE: 3-26-2015
DATE: 3/27/2015

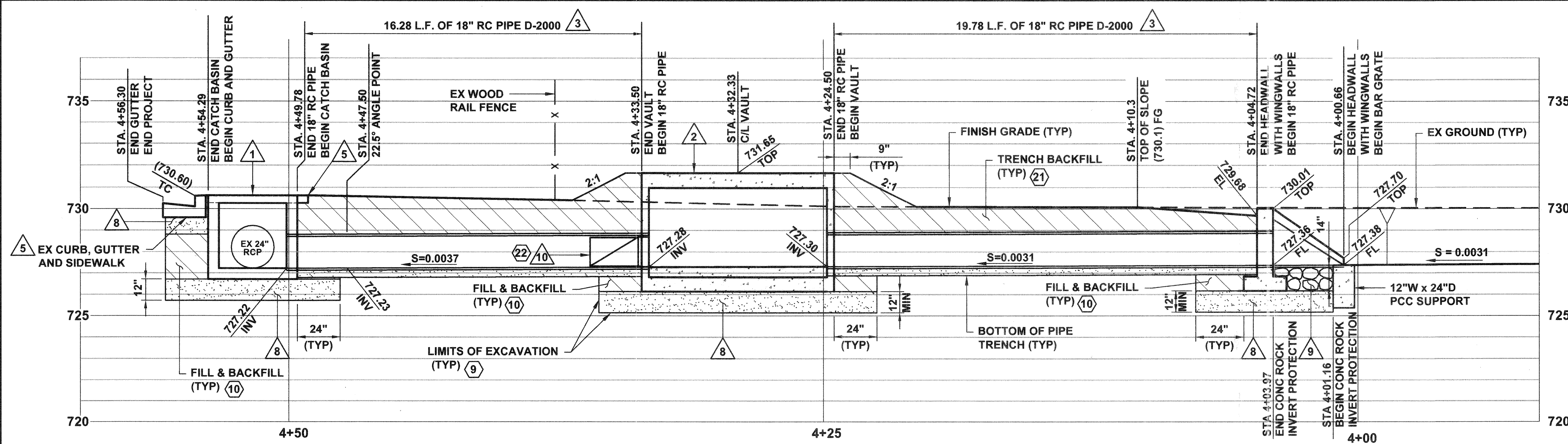
COUNTY OF VENTURA
PUBLIC WORKS AGENCY
WATERSHED PROTECTION DISTRICT

SPEC. NO.
WP15-14
PROJ. NO.
40545

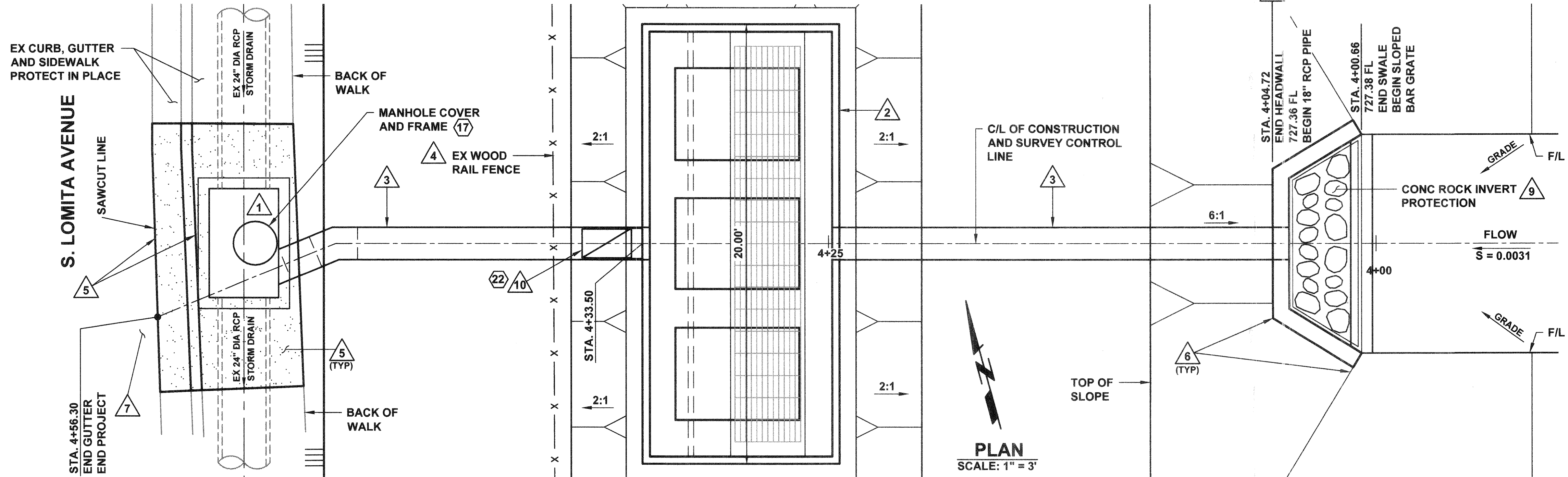
URBAN LID RETROFIT AT MEINERS OAKS
LOW FLOW DIVERSION AND SWALE PRETREATMENT
PLAN AND PROFILE STA 0+91.75 TO STA 1+35.00

SHEET **3**
OF **8**
DRAWING NO.
Y-1-832

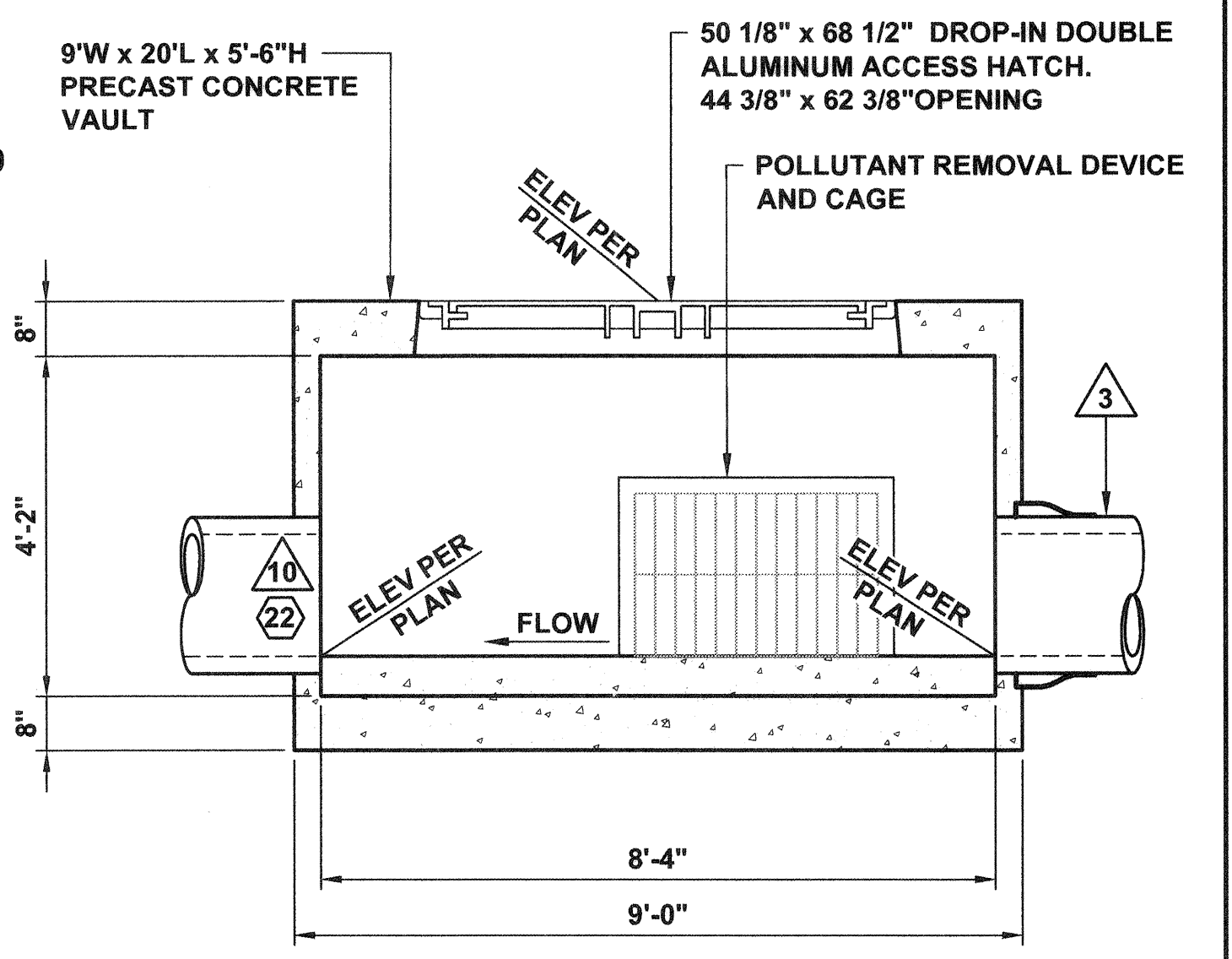




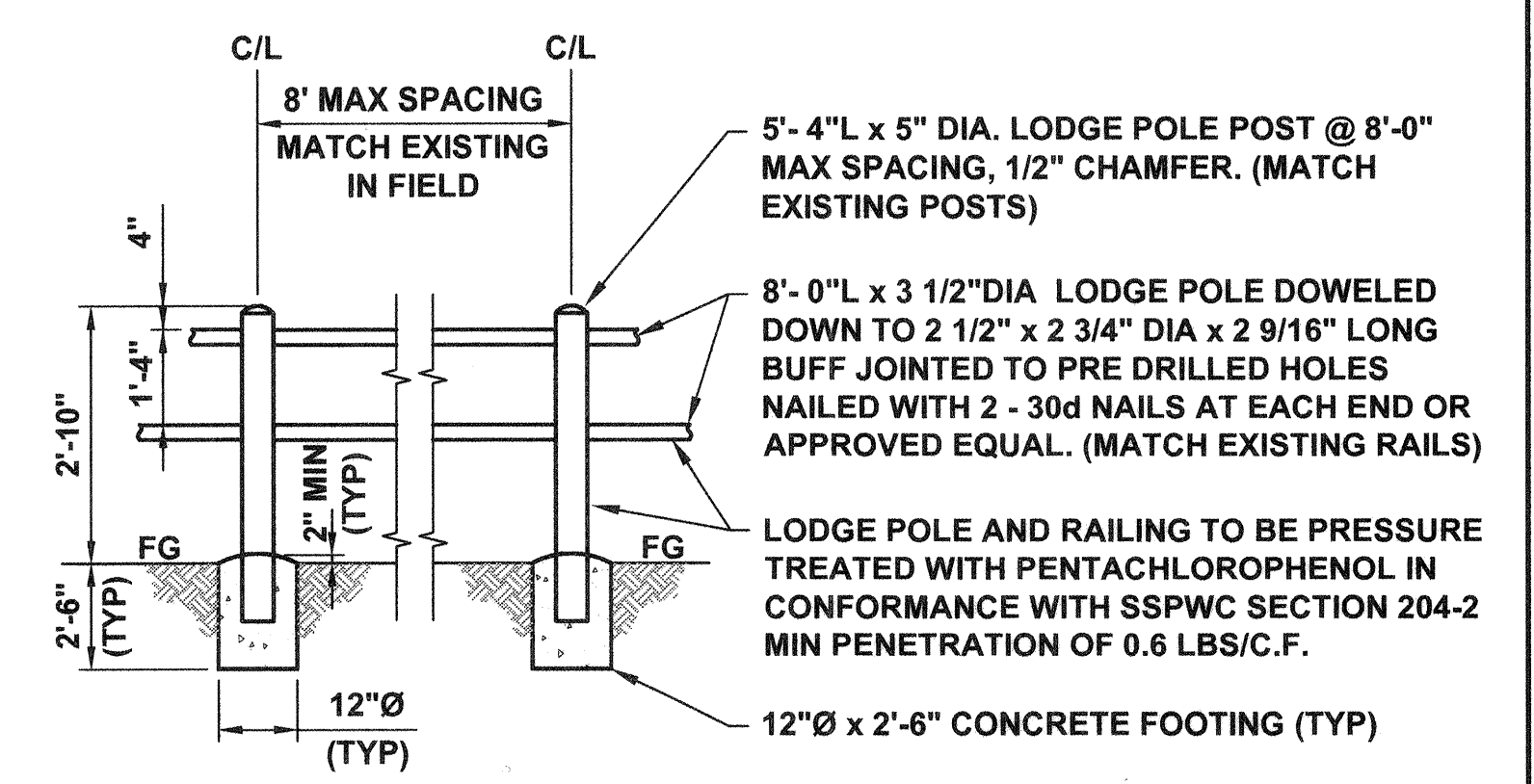
PROFILE
SCALE: 1" = 3' HORIZ
1" = 3' VERT



PLAN
SCALE: 1" = 3'



POLLUTANT REMOVAL VAULT DETAIL (F)
SCALE: 1" = 2'-0"



WOOD RAIL FENCE DETAIL (G)
SCALE: NOT TO SCALE

- NOTES**
- 1 CONSTRUCT CATCH BASIN PER SPPWC STD PLAN 300-3, W=5', V=3.38', (MODIFIED, NO CURB OPENING). 18" DIA RC PIPE CONNECTION TO CATCH BASIN PER SPPWC STD PLAN 308-2. (17)
 - 2 INSTALL POLLUTANT REMOVAL STRUCTURE, 9'W x 20'L x 5'-6"H PRECAST CONCRETE VAULT. VAULT TO HOUSE THE ABTECH INDUSTRIES SMART PAKS (SMPK-1212-3 PLUS) AND STAINLESS STEEL CAGE. SEE (F) (20)
 - 3 INSTALL 18-INCH DIA RC PIPE D-2000 PER VCWWD TRENCH PLATE No. 1. (21)
 - 4 REMOVE, DISPOSE OF AND REPLACE EXISTING WOOD RAIL FENCE IN THIS AREA AS NEEDED. SEE (G) (27)
 - 5 SAWCUT, REMOVE, DISPOSE OF AND REPLACE EXISTING CURB, GUTTER AND SIDEWALK TO NEAREST JOINT TO FACILITATE CATCH BASIN INSTALLATION. CONSTRUCT REPLACEMENTS PER SPPWC STD PLAN 120-2, TYPE A2-6 AND SPPWC STD PLAN 112-2. (7) (12) (13)
 - 6 CONSTRUCT HEADWALL, H=3'-2", L=7'-0" PER CALTRANS STD STD D90, TYPE A. SLOPED BAR GRATE PER SPPWC STD PLAN 361-2, CASE A, MOUNT BAR GRATE 4" BELOW TOP OF HEADWALL. THE FINISH TOP ELEVATION OF THE HEADWALL AND WINGWALLS SHALL PROTRUDE 4 INCHES FROM THE FINISH ELEVATION OF THE SWALES SLOPE AT ANY LOCATION. (18) (28)
 - 7 ASPHALT CONCRETE PAVEMENT OUTSIDE THE LIMITS OF REMOVAL SHALL BE PROTECTED IN PLACE. DAMAGED AC PAVEMENT SHALL BE REPLACED/REPAIRED TO THE SATISFACTION OF THE ENGINEER AND AT THE CONTRACTOR'S EXPENSE.
 - 8 INSTALL 12" DEEP STABILIZING BASE MATERIAL. COMPACT TO 95% OF LAB MAX DENSITY. (26)
 - 9 CONSTRUCT 14" THICK CONCRETE ROCK INVERT PROTECTION AREA WITHIN THE LIMITS AS SHOWN HEREON. (23)
 - 10 INTERNAL INLINE CHECK VALVE PER SPECIFICATIONS. (22)

SWALE OUTLET AND POLLUTANT REMOVAL VAULT
SCALE: 1" = 3'

REVISION	DESCRIPTION	APP.	DATE

PREPARED BY:
PHOENIX CIVIL ENGINEERING, INC.
4532 TELEPHONE ROAD SUITE 113
VENTURA, CA 93003
(805) 658-6800

DESIGNED: JT
DATE: 3-18-15
DRAWN: AR
DATE: 3-26-2015
CHECKED: JT
DATE: 3/27/2015

**COUNTY OF VENTURA
PUBLIC WORKS AGENCY
WATERSHED PROTECTION DISTRICT**

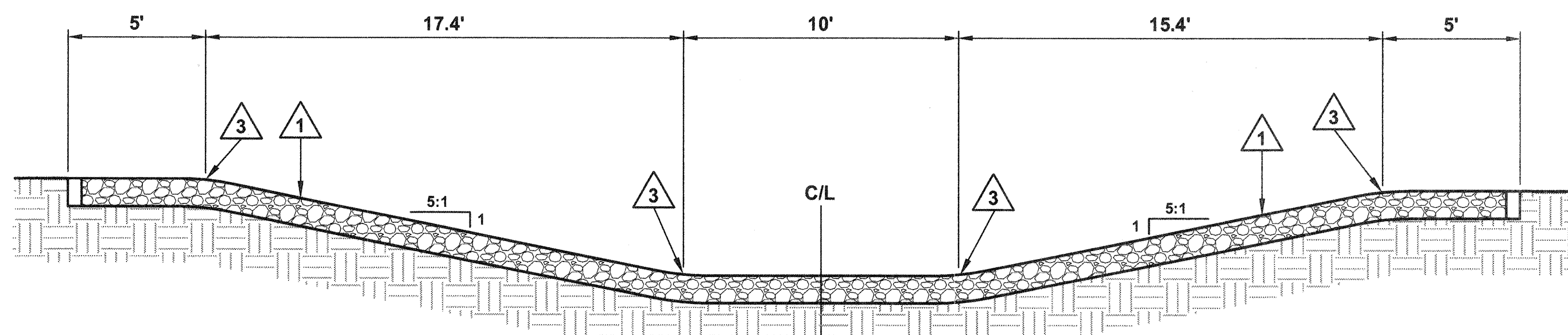
SPEC. NO.
WP15-14
PROJ. NO.
40545

URBAN LID RETROFIT AT MEINERS OAKS
SWALE OUTLET AND POLLUTANT REMOVAL VAULT
PLAN AND PROFILE STA 4+00.66 TO STA 4+56.30

SHEET **4**
OF **8**
DRAWING NO.
Y-1-833



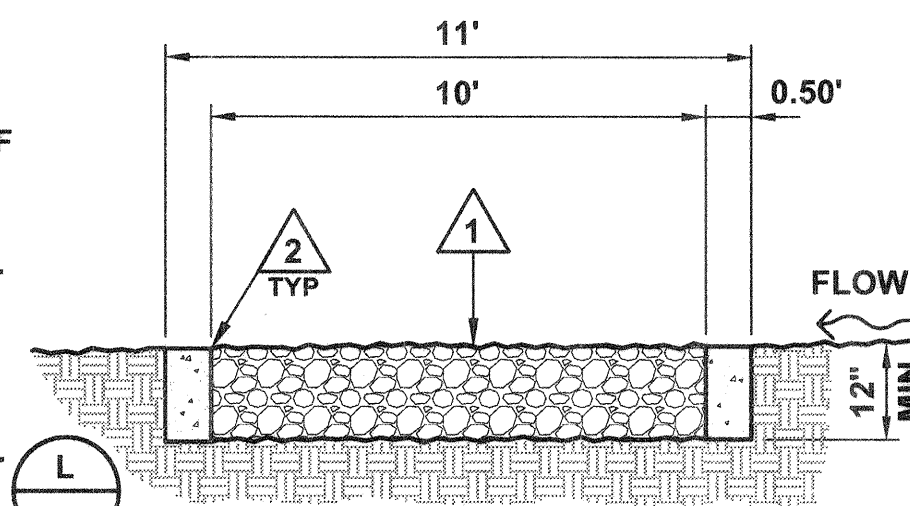
PLOT DATE: 3/20/15 SAVE DATE: 3/20/15 P:\PROJECTS\WMP0071401 MEINERS OAKS SWALE DESIGN\CAD\PLANS\SET\SHIT-04.DWG



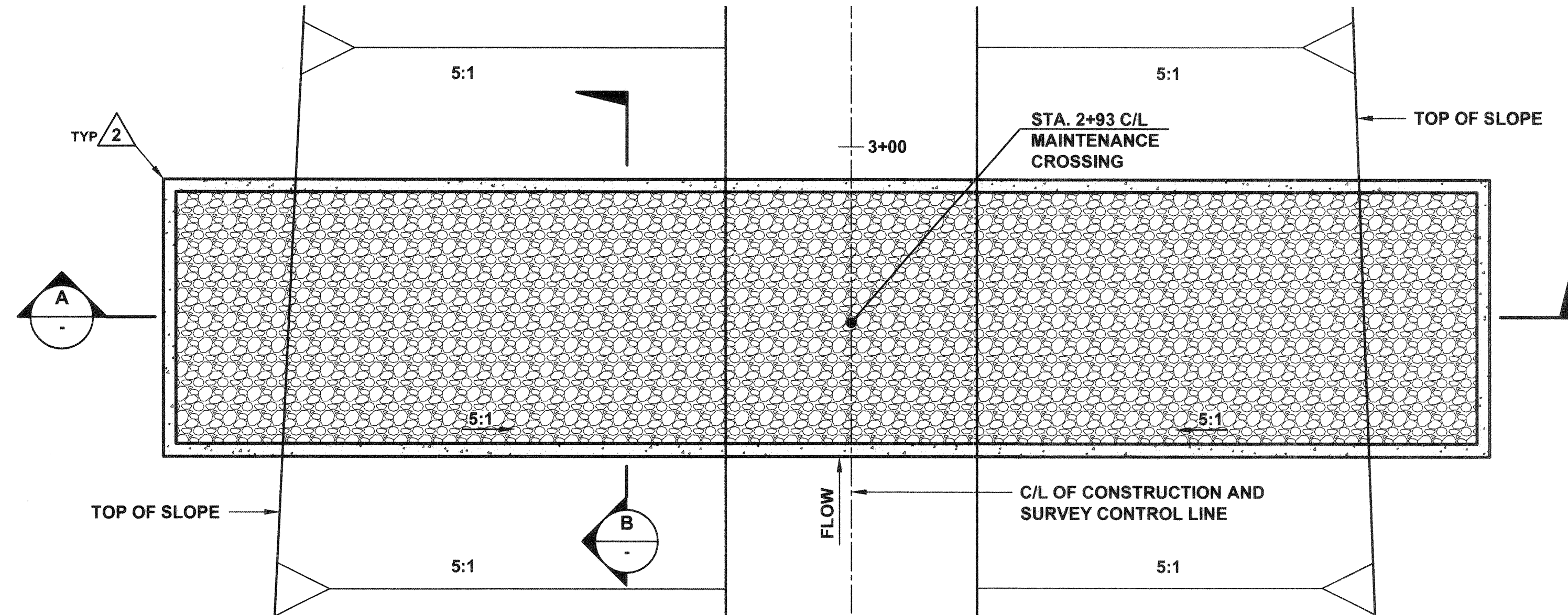
SECTION A
SCALE: 1" = 4'

NOTES

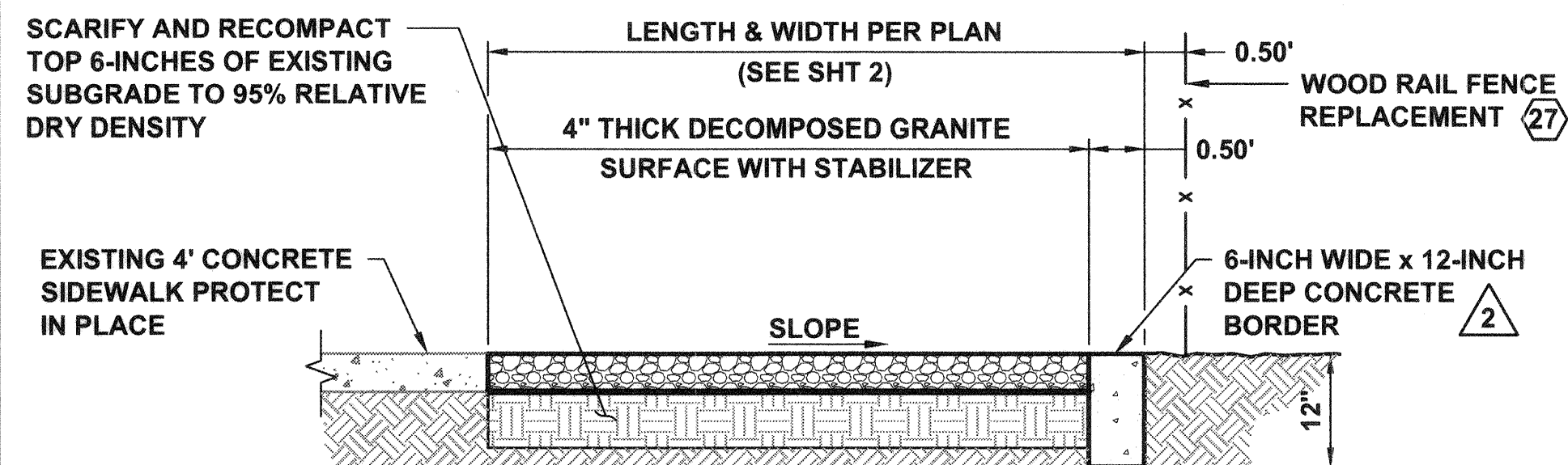
- 1 INSTALL 12-INCH THICK CRUSHED MISCELLANEOUS BASE MAINTENANCE CROSSING. (25)
- 2 CONSTRUCT A 6" WIDE x 10' LONG x 12" DEEP CONCRETE MOW STRIP. ALL EXPOSED EDGES SHALL BE CHAMFERED (3/4"x3/4").
- 3 CONSTRUCT A 10' RADIUS AT TOP AND BOTTOM OF SLOPES FOR EASIER ACCESS BY MAINTENANCE VEHICLES (ONLY WITHIN CROSSING)
- 4 SAWCUT TO A NEAT LINE, REMOVE, AND DISPOSE OF ALL INTERFERING ASPHALT CONCRETE PAVEMENT WITH THE CONSTRUCTION OF THE LOCAL DEPRESSION. (7)
- 5 ASPHALT CONCRETE PAVEMENT OUTSIDE THE LIMITS OF REMOVAL SHALL BE PROTECTED IN PLACE. DAMAGED AC PAVEMENT SHALL BE REPLACED AT CONTRACTOR'S EXPENSE AND TO THE SATISFACTION OF THE ENGINEER.
- 6 MATCH EXISTING ELEVATIONS.
- 7 CONSTRUCT CATCH BASIN PER SPPWC STD PLAN 300-3, W= 10', V=3.75', CURB OPENING = 4', t=6", t_f=6" (MODIFIED). SEE
- 8 CONSTRUCT TRANSITION STRUCTURE PER SPPWC STD 342-2 (MODIFIED). SEE
- 9 CONSTRUCT LOCAL DEPRESSION PER SPPWC STD PLAN 313-3, CASE A. (14)



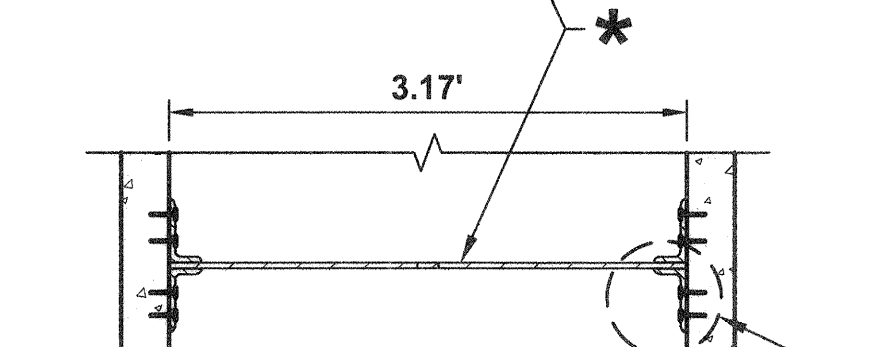
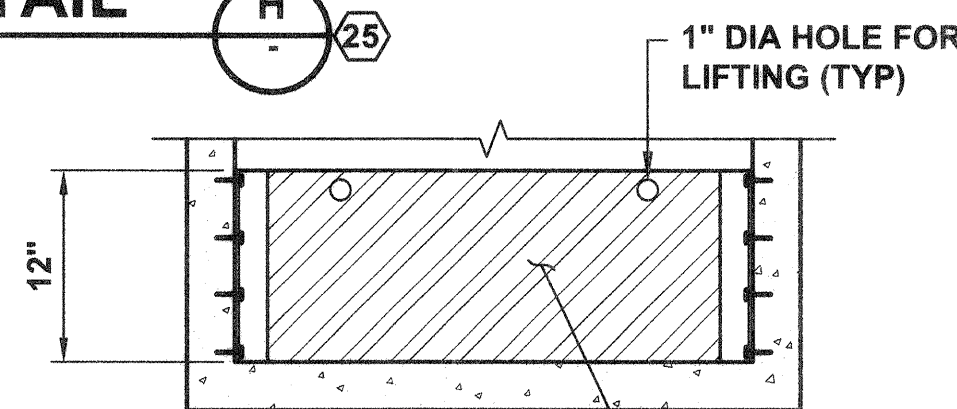
SECTION B
SCALE: N.T.S.



MAINTENANCE CROSSING DETAIL
SCALE: 1" = 4'



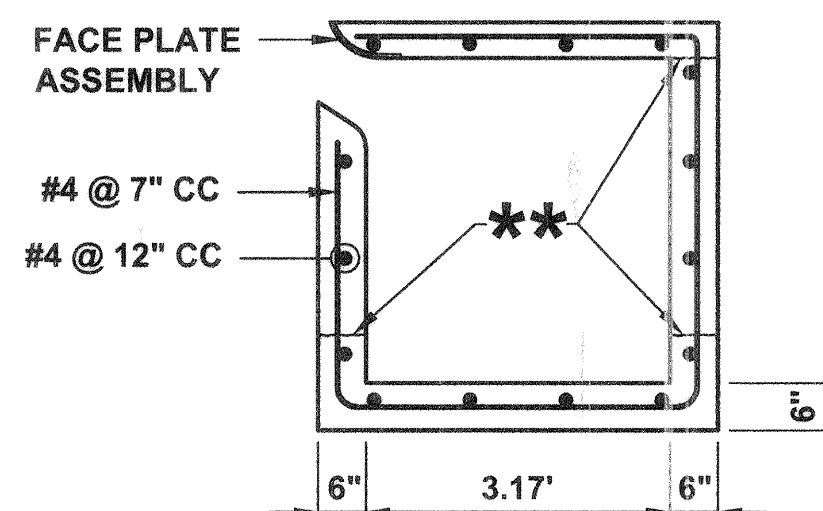
EDUCATIONAL VIEWING/PARKING AREA EDGE DETAIL
SCALE: N.T.S.



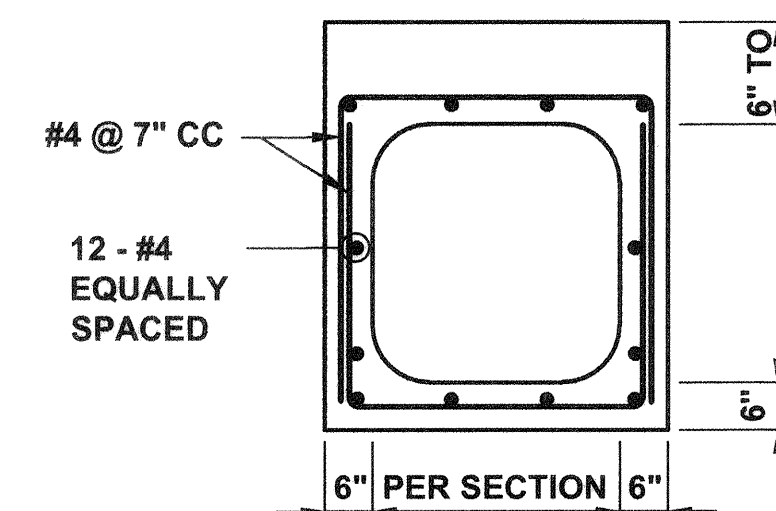
* 3/8" THICK FIBER REINF PLASTIC (FRP) SHEET. PROVIDE 6", 8", 10" AND 12" HIGH SHEETS
2" x 4" x 3/8" ANGLE BOLTED TO CONC CATCH BASIN WALL WITH 3" LONG x 1/2" DIA STAINLESS STEEL THREADED ROD SET IN SIMPSON-XP EPOXY WITH STAINLESS STEEL WASHER AND NUT. (TYP)

ADJUSTABLE WEIR PLATE
SCALE: N.T.S.

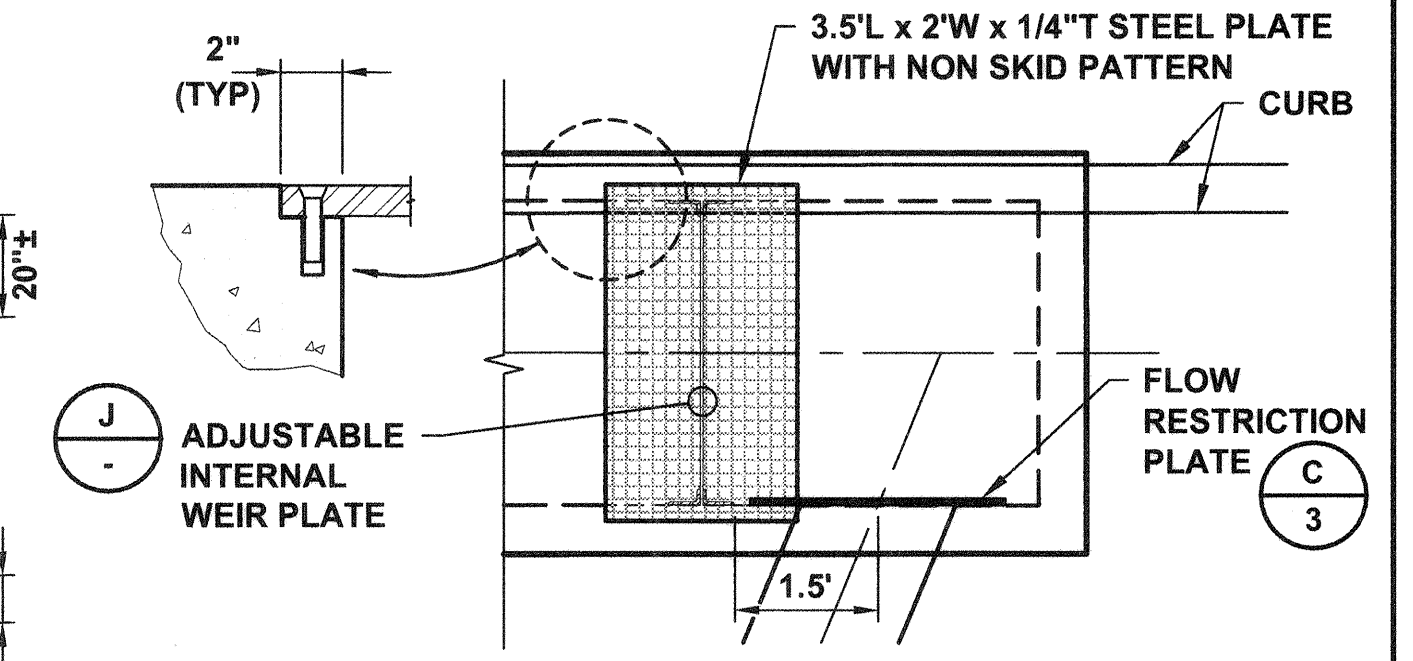
** ROUGHENED CONST JOINT (OPTIONAL)



SECTION D - D
SCALE: 1" = 2'

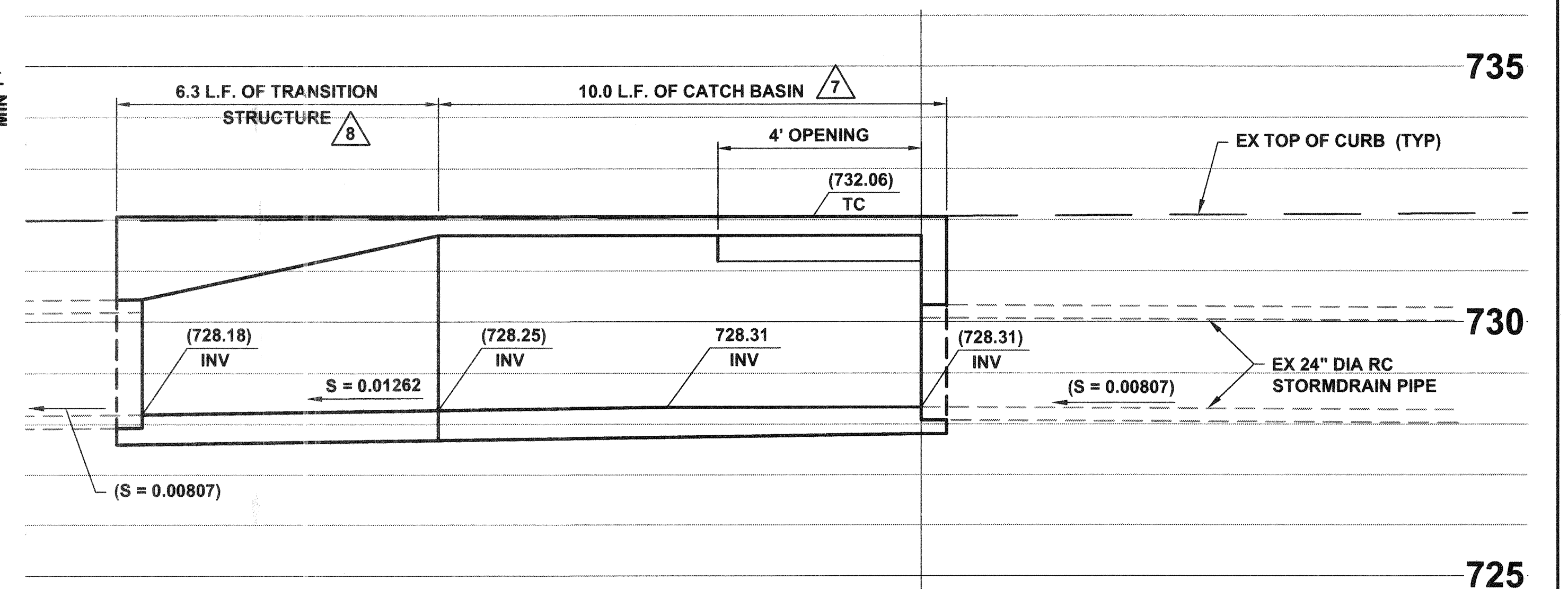


SECTION E - E
SCALE: 1" = 2'

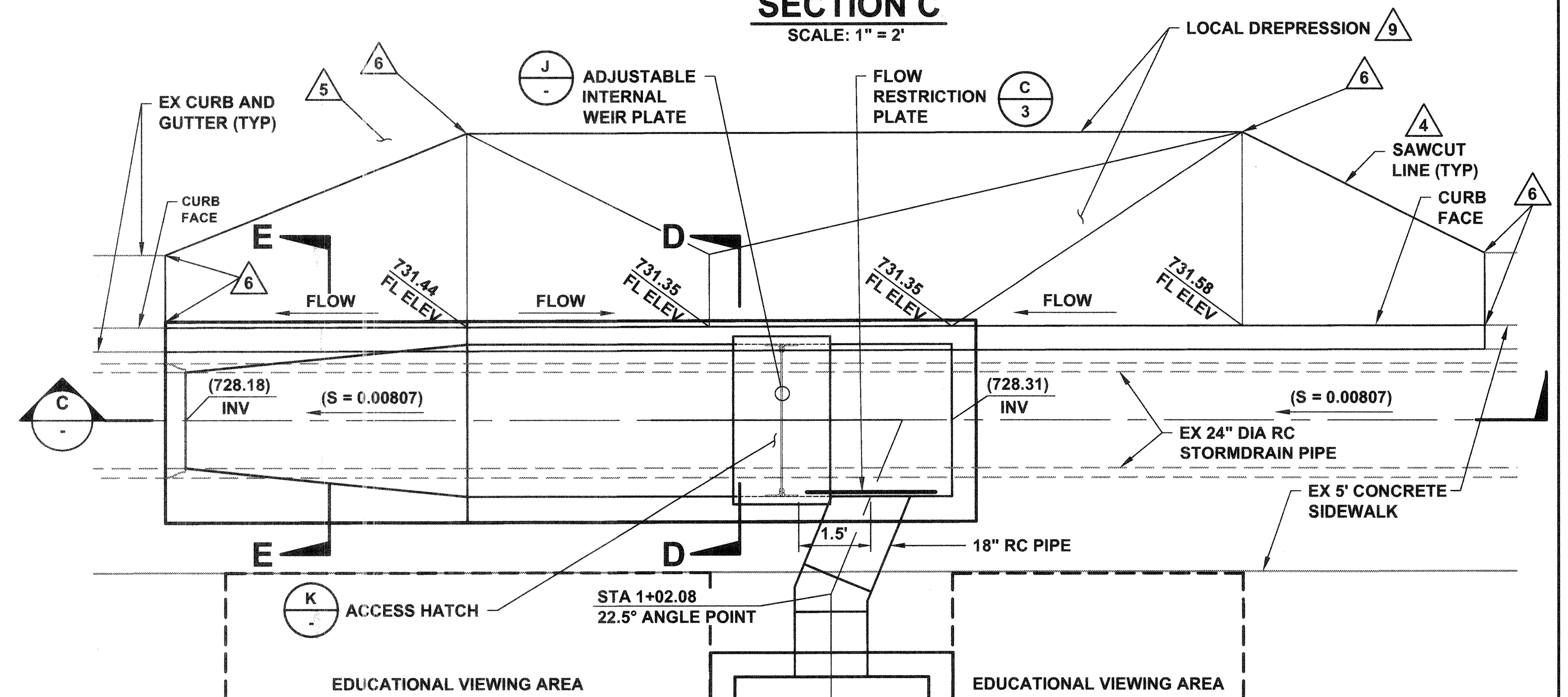


NOTE: BOLTS SHALL BE 1.25" LONG x 3/8" DIA FLUSH HEAD.

ACCESS HATCH DETAIL (K)
SCALE: 1" = 2'



SECTION C
SCALE: 1" = 2'



MODIFIED CATCH BASIN AND LOCAL DEPRESSION DETAIL
SCALE: 1" = 2'

P:\PROJECTS\MP0071401 MEINERS OAKS SMALL DESIGN\CAD\PLANSET\SP11-05.DWG
SAVE DATE: 3/20/15
PLOT DATE: 3/20/15

REVISION	DESCRIPTION	APP.	DATE
A			

PREPARED BY:
PHOENIX CIVIL ENGINEERING, INC.
4532 TELEPHONE ROAD SUITE 113
VENTURA, CA 93003
(805) 658-6800

DESIGNED: JT
DRAWN: AR
CHECKED: JT

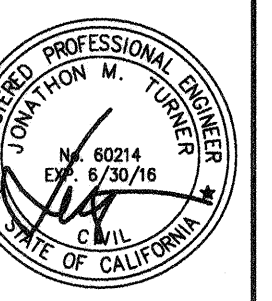
DATE: 3-18-15
DATE: 3-26-2015
DATE: 3/27/2015

**COUNTY OF VENTURA
PUBLIC WORKS AGENCY
WATERSHED PROTECTION DISTRICT**

SPEC. NO. WP15-14
PROJ. NO. 40545

URBAN LID RETROFIT AT MEINERS OAKS
SECTIONS AND DETAILS

SHEET 5 OF 8
DRAWING NO. Y-1-834

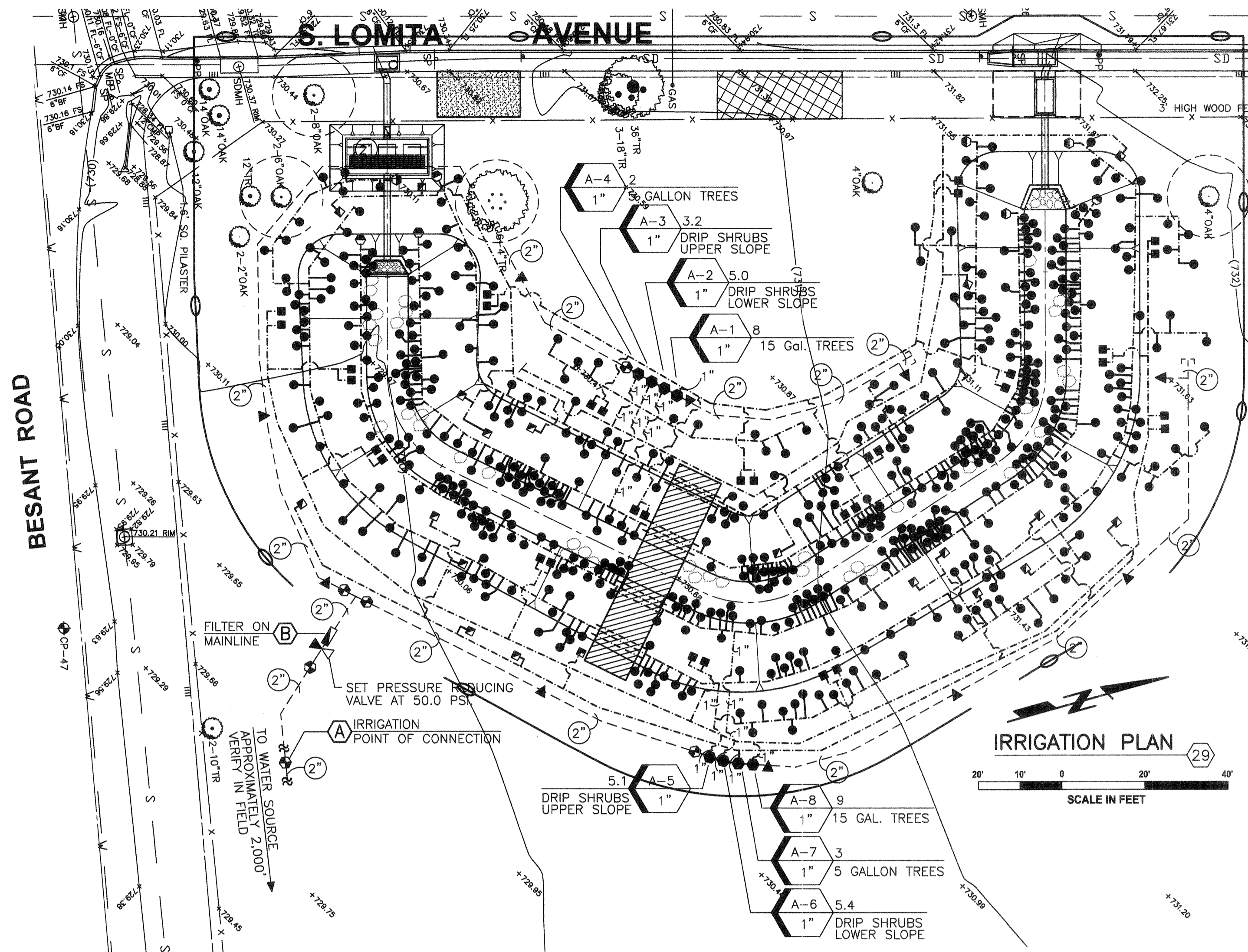


BESANT ROAD

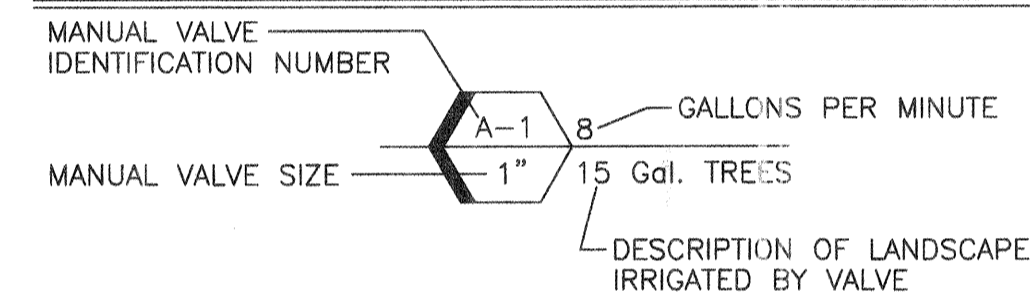
S. LOMITA AVENUE

PROJECT NOTES

- FIELD VERIFY AVAILABLE WATER PRESSURE FROM EXISTING IRRIGATION PUMP AT POINT OF CONNECTION AND NOTIFY THE LANDSCAPE ARCHITECT PRIOR TO BEGINNING ANY WORK.
- CONTACT DIG ALERT AT 1-800-227-2600 TO IDENTIFY AND LOCATE ALL ON SITE UTILITIES PRIOR TO BEGINNING WORK. THE CONTRACTOR SHALL COORDINATE WITH THE COUNTY OF VENTURA PUBLIC WORKS REPRESENTATIVE AND REVIEW THE EXISTING SITE PRIOR TO BEGINNING WORK TO AVOID CONFLICTS WITH EXISTING UTILITIES.
- SCH. 40 PVC LATERALS SHALL BE 3/4" IN SIZE UNLESS SPECIFICALLY IDENTIFIED ON THE PLAN AS 1" SIZE. ALL SCH. 40 PVC LATERALS ON THIS PROJECT SHALL BE TREATED WITH ULTRAVIOLET RESISTANT MATERIALS BY THE PIPE MANUFACTURER SUITABLE FOR USE FOR ON GRADE APPLICATIONS. ALL SCH. 40 PVC ULTRAVIOLET TREATED LATERALS INSTALLED ON GRADE SHALL BE STAPLED TO THE GRADE WITH #4X24" REBAR J-HOOKS AT 4'-0" O.C.
- THE CONTRACTOR SHALL BE RESPONSIBLE FOR ANY TRENCH SETTLING OR IRRIGATION HEAD SETTLING OR TILTING. ALL TRENCHES WILL BE BACK FILLED WITH CLEAN SOIL, COMPACTED AND, IF DEEMED NECESSARY BY THE COUNTY, BE PLANTED WITH NEW PLANTS AND MULCH GROUND COVER. ALL HEADS THAT SETTLE WILL BE RAISED AND STRAIGHTENED TO CONFORM TO THE DRIP EMITTER DETAIL. PROVIDE ADDITIONAL SOIL AS NECESSARY AND HAND TAMP AROUND HEAD TO PREVENT FUTURE SETTLING.
- INSTALL PVC SLEEVES FOR ALL PVC IRRIGATION PIPES INSTALLED UNDER PAVING. MAINLINE AND IRRIGATION PIPING SHALL BE SIZED WITH SLEEVE PIPING BEING 3 TIMES LARGER THAN THE PIPE SIZE INSERTED WITHIN THE SLEEVE. THIS NOTE APPLIES TO ANY POSSIBLE CONDITION ON SITE THAT IS DISCOVERED IN THE FIELD AT THE TIME OF CONSTRUCTION.
- THE IRRIGATION SYSTEM IS SHOWN DIAGRAMMATICALLY. BOTH LATERAL PIPING AND MAINLINE PIPING ARE ILLUSTRATED ON THE IRRIGATION PLAN FOR CLARITY PURPOSES. INSTALL ALL IRRIGATION EQUIPMENT WITHIN THE LIMIT OF WORK BOUNDARY WHENEVER POSSIBLE. INSTALL THE IRRIGATION MAINLINE IN A LOCATION WITHIN THE WORK BOUNDARY THAT PREVENTS IT FROM BEING INSTALLED DIRECTLY UNDER ANY NEW TREE PLANTING OR WITHIN ANY EXISTING TREE BRANCH CANOPY (DRIP LINE). COORDINATE THE EXACT LAYOUT OF THE IRRIGATION MAINLINE AND LATERAL SYSTEM AS WELL AS THE DEPTH OF THE IRRIGATION MAINLINE WITH THE COUNTY OF VENTURA REPRESENTATIVE AND OJAI VALLEY LAND CONSERVANCY REPRESENTATIVE PRIOR TO BEGINNING ANY WORK.
- INSTALL ALL MANUAL IRRIGATION VALVES A MINIMUM OF 12" ABOVE FINISH GRADE. POSITION DRIP FILTER ON DOWNSTREAM RISER SO THAT FILTER CAN BE EASILY ACCESSED BY MAINTENANCE STAFF. INSTALL MANUAL VALVES 30" APART FROM EACH OTHER.
- INSTALL ONLY PURPLE COLORED RECLAIMED WATER VALVE BOXES ON THIS PROJECT. PROVIDE AND INSTALL ALL VALVES BOX SIZES AS PER PLANS, DETAILS, AND SPECIFICATIONS.
- USE ONLY SCH. 80 PVC NIPPLES AND T.O.E. NIPPLES AS NEEDED FOR ALL THREADED VALVE ASSEMBLIES. NO SCH. 40 PVC MALE ADAPTERS WILL BE USED FOR ANY THREADED ASSEMBLY.
- INSTALL MANUFACTURER G.P.H. ALGAE AND ULTRA VIOLET RESISTANT FLEXIBLE PVC HOSE, 'STICKY STRIPE' SERIES, I.P.S. SIZE 3/8", MODEL NUMBER GPVSSAR050IRR, FROM RIGID SCH. 40 PVC U.V. LATERAL PIPING TO EACH INDIVIDUAL PLANT ROOT BALL PIT. CUT TUBING LENGTH TO SIZE IN THE FIELD. SOLVENT WELD (2) G.P.H. PVC BLACK COLORED MALE ADAPTERS, MODEL G436073B, USING IPS P-70 PURPLE PRIMER AND IPS-795 PVC SOLVENT CEMENT. THREAD ONE MALE ADAPTER INTO SCH. 40 U.V. TREATED PVC LATERAL FITTING AND THE SPECIFIC IRRIGATION NOZZLE AS SPECIFIED ON PLAN ON THE END SUPPLYING WATER TO THE PLANT. SECURE THE FLEXIBLE TUBING TO GRADE USING G.P.H. GALVANIZED TUBING STAKES, MODEL G436050, AT 3'-0" O.C. ENSURE THAT EACH CONTAINERIZED PLANT HAS A 4" SOIL BASIN AROUND THE PERIMETER OF THE ROOT BALL TO CONTAIN THE IRRIGATION WATER WITHIN THE PLANT BASIN. THE SPECIFIC IRRIGATION NOZZLE SHALL BE PLACED AT THE OUTSIDE EDGE OF THE PLANT ROOT BALL ALLOWING WATER TO IRRIGATE BOTH THE PLANT ROOT BALL AND SOIL BACKFILL MIX.
- ALL PVC LATERAL FITTINGS USED ON THIS PROJECT SHALL BE ULTRA VIOLET RESISTANT SCH. 40 PVC MATERIAL. NO EXCEPTIONS ALLOWED.
- ALL SPRINKLER HEADS SPECIFIED ON THIS PROJECT HAVE BEEN SPECIFIED WITH A BUILT IN CHECK VALVE. ALL SPRINKLER HEADS USED ON THIS PROJECT MUST BE FURNISHED WITH A CHECK VALVE TO PREVENT LOW HEAD DRAINAGE. THE G.P.H. PRODUCTS SPECIFIED FOR THIS PROJECT CAN PREVENT LOW HEAD DRAINAGE UP TO 9'-3" IN ELEVATION CHANGE. ENSURE THAT ALL SPRINKLER HEADS INSTALLED ON ANY LATERAL SYSTEM DO NOT EXCEED THE 9'-3" MAXIMUM OPERATING RANGE FOR PROPER OPERATION OF THE CHECK VALVE AS DESIGNED ON THE IRRIGATION PLAN. SHOULD SIGNIFICANT DEVIATIONS IN THE LATERAL PIPING INSTALLATION BE MADE BY THE INSTALLING CONTRACTOR WITHOUT THE ADVANCED KNOWLEDGE OF THE LANDSCAPE ARCHITECT, THE CONTRACTOR WILL BE DIRECTED TO CORRECT THE LATERAL PIPING INSTALLATION TO THE SATISFACTION OF THE LANDSCAPE ARCHITECT TO PREVENT LOW HEAD DRAINAGE FROM OCCURRING ON SITE WITHOUT ANY COST TO THE OWNER.



REMOTE CONTROL VALVE KEY



IRRIGATION CALCULATIONS

CALCULATIONS - VALVE A-1		8.0 GPM
AVAILABLE WATER PRESSURE @ EXISTING PUMP	85.0 PSI	
LOSS THROUGH 2" MAINLINE TO PRES. REDUCING VALVE	1.4 PSI	
PRESSURE REDUCING VALVE SET AT 50.0 PSI	50.0 PSI	
LOSS FROM PRESSURE REDUCING VALVE TO WATER FILTER	0.1 PSI	
LOSS AT WATER FILTER	0.2 PSI	
LOSS FROM WATER FILTER TO MANUAL ANGLE VALVE	0.3 PSI	
LOSS @ MANUAL ANGLE VALVE	1.0 PSI	
DRIP PRESSURE REGULATING FILTER SET AT	40.0 PSI	
LOSS FROM PRESSURE REGULATING FILTER TO LAST HEAD	2.6 PSI	
LOSS DUE TO ELEVATION CHANGE	1.7 PSI	
LOSS THROUGH FITTINGS	2.1 PSI	
TOTAL FRICTION LOSS FROM PRESSURE REGULATING FILTER	6.4 PSI	
AVAILABLE DOWNSTREAM PRESSURE AT PRESSURE REGULATING FILTER	40.0 PSI	
OPERATING PSI	33.6 PSI	

PROJECT KEY NOTES

- (A) IRRIGATION POINT OF CONNECTION:**
EXISTING NON-POTABLE IRRIGATION WELL WATER SOURCE EXISTING ON NATURE CONSERVANCY PROPERTY LOCATED APPROXIMATELY 2000 FEET TO THE EAST OF THIS PROJECT. CONTRACTOR TO VERIFY THE EXACT DISTANCE IN THE FIELD. EXCAVATE AND EXPOSE THE EXISTING IRRIGATION MAINLINE SOURCE DOWNSTREAM OF EXISTING BACKFLOW DEVICES FROM WELL AT LOCATION CLOSEST TO THIS PROJECT. CUT MAINLINE AND INSTALL A NEW TEE PROVIDING AN 2" WATER SOURCE FOR THIS PROJECT. INSTALL A NEW SCH. 80 PVC BALL VALVE IN A VALVE BOX FOR USE AS AN ISOLATION VALVE. TRENCH AND INSTALL MAINLINE TO PROJECT SITE AND INSTALL MAINLINE AND IRRIGATION VALVES AS PER PLAN.
- (B) MAINLINE WATER FILTER ON BRASS RISERS 24" ABOVE FINISH GRADE UPSTREAM OF MASTER VALVE**
INSTALL A 2" STEEL WATER FILTER ON 2" IRRIGATION MAINLINE UPSTREAM OF ALL MANUAL SPRINKLER VALVE ASSEMBLIES. INSTALL THE FILTER ON BRASS RISERS, 24" ABOVE FINISH GRADE. THE FILTER SHALL BE EQUIPPED WITH A 130 MICRON MESH SCREEN. INSTALL A 2" PRESSURE REDUCING VALVE ON THE BRASS RISER ON THE INLET SIDE OF THE WATER FILTER. SET PRESSURE REDUCING VALVE TO A 50.0 PSI DOWNSTREAM PRESSURE.

IRRIGATION LEGEND

SYMBOL	DESCRIPTION	MANUFACTURER	MODEL / REMARKS
---	BURIED MAINLINE	PACIFIC PLASTICS	CLASS 315 PVC 'CYCLE FLOW' PURPLE COLORED PIPE SUITABLE FOR NON POTABLE WATER - 2" SIZE & LARGER - SOLVENT WELD - 24" BELOW GRADE
---	BURIED MAINLINE	PACIFIC PLASTICS	SCH. 40 PVC 'CYCLE FLOW' PURPLE COLORED PIPE SUITABLE FOR NON POTABLE WATER - 1-1/2" SIZE & SMALLER - SOLVENT WELD - 24" BELOW GRADE
---	ULTRAVIOLET TREATED PVC LATERAL INSTALLED ON GRADE	PACIFIC PLASTICS	'SOLAR PROOF ULTRAVIOLET RESISTANT' SCH. 40 PVC - SOLVENT WELD - STAPLE TO GRADE #4 X 24" REBAR J-HOOKS @ 4'-0" O.C. 1" SIZES NOTED / MINIMUM 3/4" SIZE FOR REMAINING SYSTEM - USE TO ASSEMBLE BURIED PVC REMOTE CONTROL VALVE ASSEMBLIES AND SLEEVES AS WELL
---	FLEXIBLE PVC HOSE INSTALLED ON GRADE	G.P.H. INC.	SCH. 40 PVC FLEXIBLE PVC HOSE - MODEL GPVSSAR050IRR 'STICKY STRIPE' - 3/8" IPS SIZE - SOLVENT WELD TO G.P.H. PVC MALES ADAPTERS, G436073B, BLACK 3/8" IPS, WITH IPS P-70 PRIMER & 795 PVC SOLVENT CEMENT - STAPLE TO GRADE W/ G.P.H. GALV. STAPLES, MODEL G436050, @ 3'-0" O.C.
⊗	SCH. 80 PVC BALL VALVE	COLONIAL / LASCO	VXX101N-SC SERIES - LINE SIZE - IN PURPLE COLORED STANDARD RECTANGULAR VALVE BOX
⊗	PRESSURE REDUCING VALVE	WILKINS	500HLR SERIES - 2" SIZE - SET AT 50.0 PSI - INSTALLED IN PURPLE COLORED JUMBO VALVE BOX WITH PURPLE LID
⊗	IRRIGATION MAINLINE FILTER	AMAD	MODEL #2-0200-1150-1013 - 130 MICRON MESH SCREEN - 2" STEEL BODY - THREADED INLET AND OUTLET - INSTALL 24" ABOVE GRADE ON BRASS RISERS
⊗	QUICK COUPLER	RAIN BIRD	44 NP - 1" SIZE - TWO PIECE RED BRASS BODY WITH PURPLE LOCKING RUBBER COVER - IN A PURPLE 9" ROUND VALVE BOX
⊗	DRIP REMOTE CONTROL VALVE ASSEMBLY	CHAMPION / RAIN BIRD	CHAMPION BRASS MANUAL ANGLE VALVE WITH UNION AND RISING SWIVEL, MODEL NUMBER 300RS-100, 1" SIZE, WITH A RAIN BIRD PRESSURE REGULATING FILTER, 1" SIZE, MODEL NUMBER PRF-100-RBY WITH A 200 MESH (75 MICRON) STAINLESS STEEL FILTER SCREEN.
⊗	PVC FLUSH VALVE	SPEARS	SCH. 40 PVC BALL VALVE - COMPACT SERIES - LINE SIZE - INSTALLED IN A PURPLE RECTANGULAR VALVE BOX WITH 4'-0" FLEX HOSE
●	PRESSURE COMPENSATING 2 GPH DRIP EMITTER W/ BUILT IN CHECK VALVE	G.P.H.	GPSTCV2MR (1/2" FPT / 2.0 GPH) - EMITTER W/ CHECK VALVE & PURPLE CAP - ATTACHED TO 1/2" G.P.H. 'STICKY STRIPE' FLEX PVC MODEL GP/CSSAR050IRR W/ (2) BLACK COLORED PVC MALE ADAPTERS, G.P.H. MODEL G436073B
■	PRESSURE COMPENSATING .25 GPM FLOOD BUBBLER W/ BUILT IN CHECK VALVE	G.P.H.	GPBCV25R (1/2" FPT / .25 GPM) EUBBLER W/ CHECK VALVE & PURPLE CAP ATTACHED TO 1/2" G.P.H. 'STICKY STRIPE' FLEX PVC MODEL GPVSSAR050IRR W/ (2) BLACK COLORED PVC MALE ADAPTERS, G.P.H. MODEL G436005B
■	TREE BUBBLERS	G.P.H.	GPBCV50R (1/2" FPT / .50 GPM) EUBBLER W/ CHECK VALVE & PURPLE CAP - ATTACHED TO 1/2" G.P.H. 'STICKY STRIPE' FLEX PVC MODEL GPVSSAR050IRR W/ (2) BLACK COLORED PVC MALE ADAPTERS, G.P.H. MODEL G436005B

P:\PROJECTS\MMF0071401 MEINERS OAKS SWALE DESIGN\CAD\PLANS\LANDSCAPE\14.64 SHEET 6 BRIG-REVISED.DWG

SAVE DATE: 3/22/15

PLOT DATE: 3/22/15

REVISION	DESCRIPTION	APP.	DATE
D			
C			
B			
A			

PREPARED BY: **JORDAN, GILBERT & BAIN**
LANDSCAPE ARCHITECTS, INC.
3350 LOMA VISTA ROAD, VENTURA CA 93003
(805) 642-3641 FAX (805) 642-9814

DESIGNED: **MG**
DRAWN: **TC**
CHECKED: **MG**

PROJECT MANAGER: *Michael Meiners* 3-18-15
DEPUTY DIRECTOR: *Theresa Handberg* 3-16-2015
DISTRICT DIRECTOR: *John S.P.* 3/27/2015

COUNTY OF VENTURA
PUBLIC WORKS AGENCY
WATERSHED PROTECTION DISTRICT

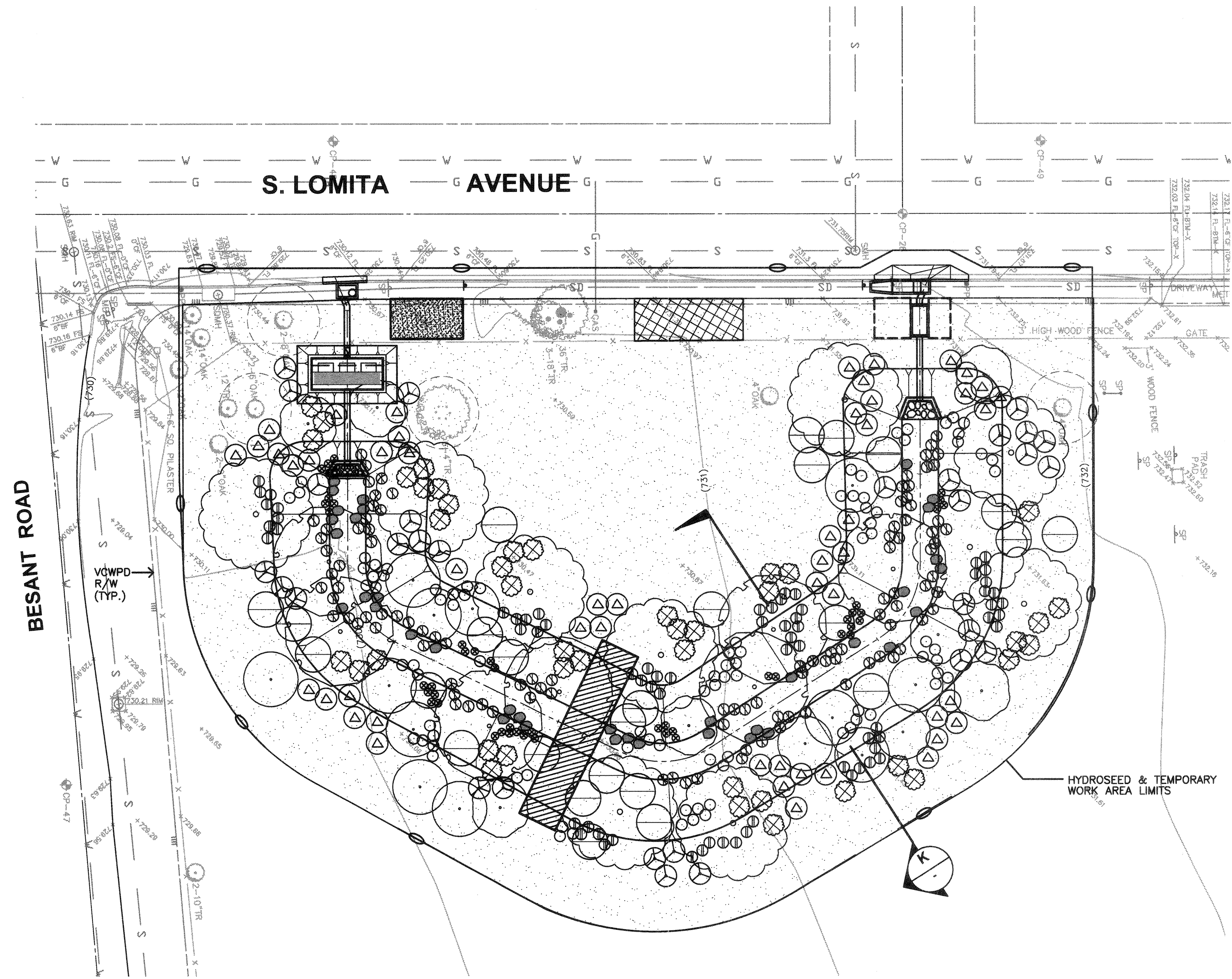
SPEC. NO. **WP15-14**
PROJ. NO. **40545**

URBAN LID RETROFIT AT MEINERS OAKS
IRRIGATION PLAN

SHEET **6**
OF **8**
DRAWING NO. **Y-1-835**



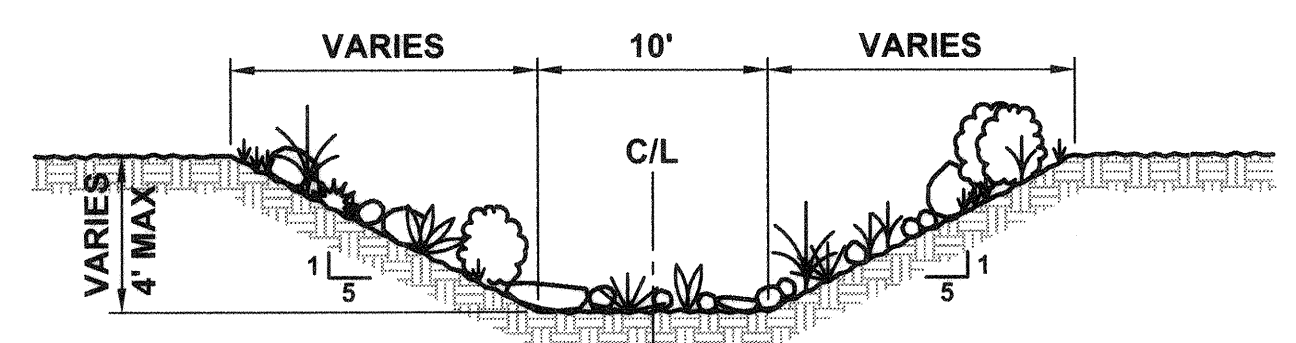
PLOT DATE: 3/23/15
 SAVE DATE: 3/23/15
 P:\PROJECTS\WP15071401_MEINERS_OAKS_SWALE_DESIGN\CAD\PLANS\LANDSCAPE\14.64_SHEET_7_PLANTING.DWG



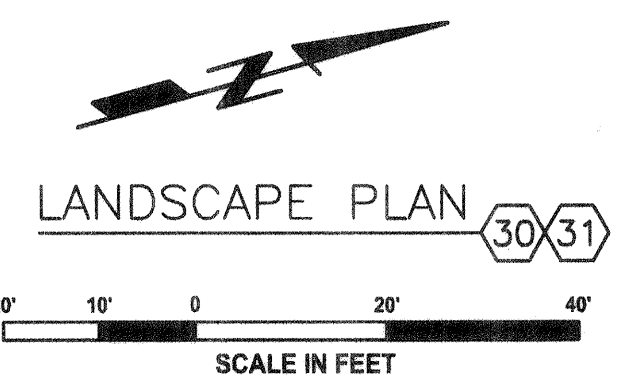
LEGEND

SYMBOL	BOTANICAL NAME/ COMMON NAME	SIZE	QUAN	HT. & SPRED.	WUCOLS RATING	DETAIL REF.
TREES						
	PLATANUS RACEMOSA CALIFORNIA SYCAMORE	15 GAL	7	12' X 5'	L	9/SHEET 7 10/SHEET 7
	QUERCUS LOBATA VALLEY OAK	15 GAL	10	12' X 5'	L	9/SHEET 7 10/SHEET 7
	HETEROMELES ARBUTIFOLIA TOYON	1 GAL	14	8' X 3'	L	9/SHEET 7
	RHANMUS ILLICIFOLIA HOLLYLEAF REDBERRY	1 GAL	7	8' X 3'	L	9/SHEET 7
SHRUBS						
	RIBES SPECIOSUM FUCHSIA-FLOWERING GOOSEBERRY	1 GAL	30		L	9/SHEET 7
	BACCHARIS SALICIFOLIA MULE FAT	1 GAL	70		L	9/SHEET 7
	JUNGUS PATENS CALIFORNIA GRAY RUSH	1 GAL	106		L	9/SHEET 7
	CLEMATIS LIGUSTICIFLIA WESTERN WHITE CLEMATIS	1 GAL	42		L	9/SHEET 7
	MUHLENBERGIA RIGENS DEER GRASS	1 GAL	90		L	9/SHEET 7
	RANUNCULUS CALIFORNICUS BUTTERCUPS	1 GAL	47		L	9/SHEET 7
	SAMBUCUS MEXICANA TAPIRO	1 GAL	26		L	9/SHEET 7
	SALVIA LEUCOPHYLLA PURPLE SAGE	1 GAL	52		L	9/SHEET 7
	BOULDERS SEE SPECIFICATIONS	2'X3'	37			
	HYDROSEED MIX SEE SPECIFICATIONS				L	

NOTES:
 1. ALL SIDE SLOPES SHALL RECEIVE COIR MATT 400 IN ACCORDANCE WITH CASQA BMP FACT SHEET EC-7. OVERLAPS AND STAPLING PER MANUFACTURER'S RECOMMENDATION.
 2. SEED MIX SHALL BE HYDROSEEDING IN ACCORDANCE WITH CASQA BMP FACT SHEET EC-4.



SECTION K
 SCALE: N.T.S.



REVISION	DESCRIPTION	APP.	DATE
D			
C			
B			
A			

PREPARED BY:
JORDAN, GILBERT & BAIN
 LANDSCAPE ARCHITECTS, INC.
 3350 LOMA VISTA ROAD, VENTURA CA 93003
 (805) 642-3841 FAX (805) 642-9814

DESIGNED: MG 3-18-15
 DRAWN: TC 3-26-2015
 CHECKED: MG 3/27/2015
 PROJECT MANAGER: *Mal McKenna*
 DEPUTY DIRECTOR: *Sharon Wilson*
 DISTRICT DIRECTOR: *Julie O'Neil*

COUNTY OF VENTURA
PUBLIC WORKS AGENCY
WATERSHED PROTECTION DISTRICT

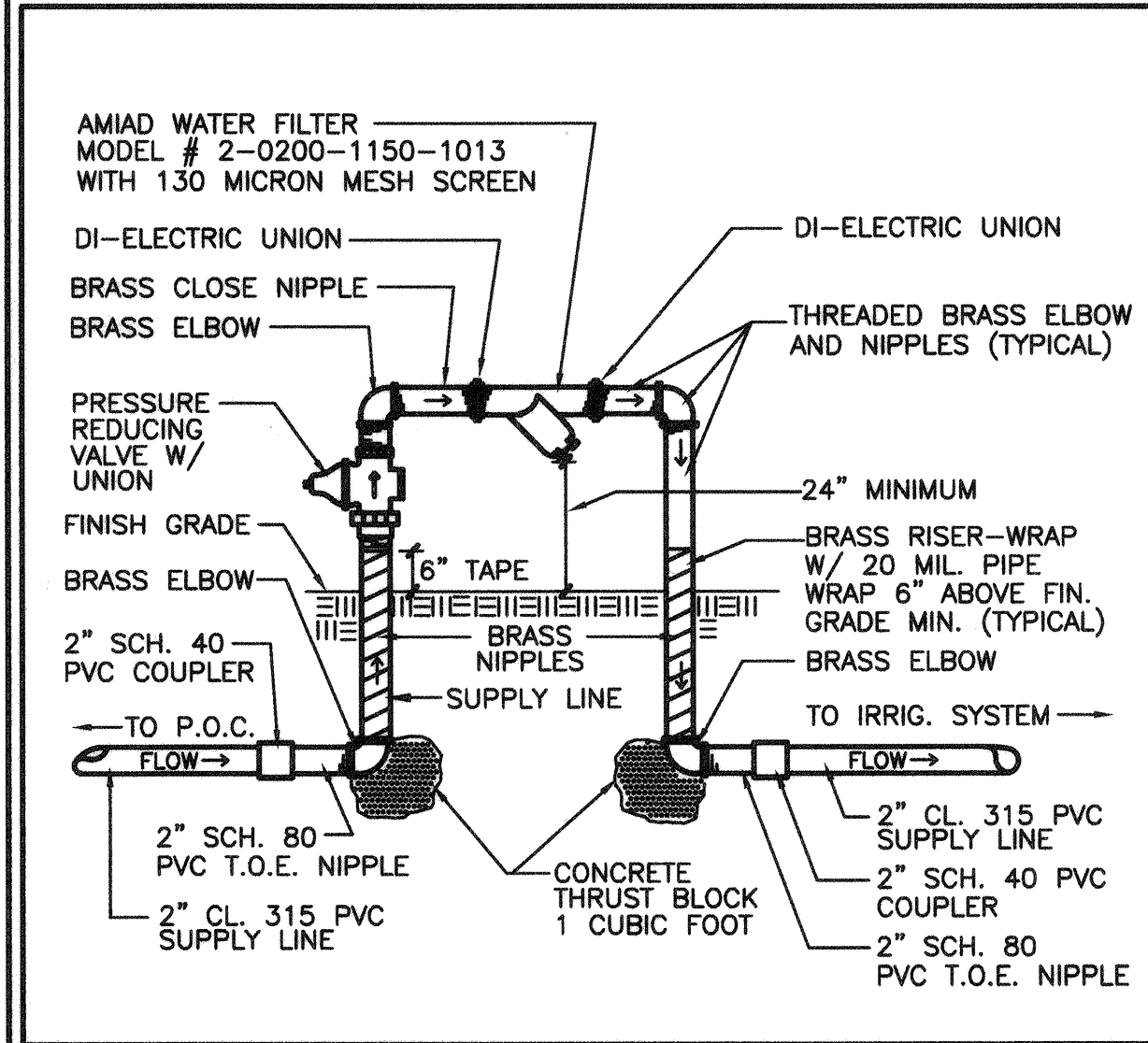
SPEC. NO.
WP15-14
 PROJ. NO.
40545

URBAN LID RETROFIT AT MEINERS OAKS
 LANDSCAPE PLAN

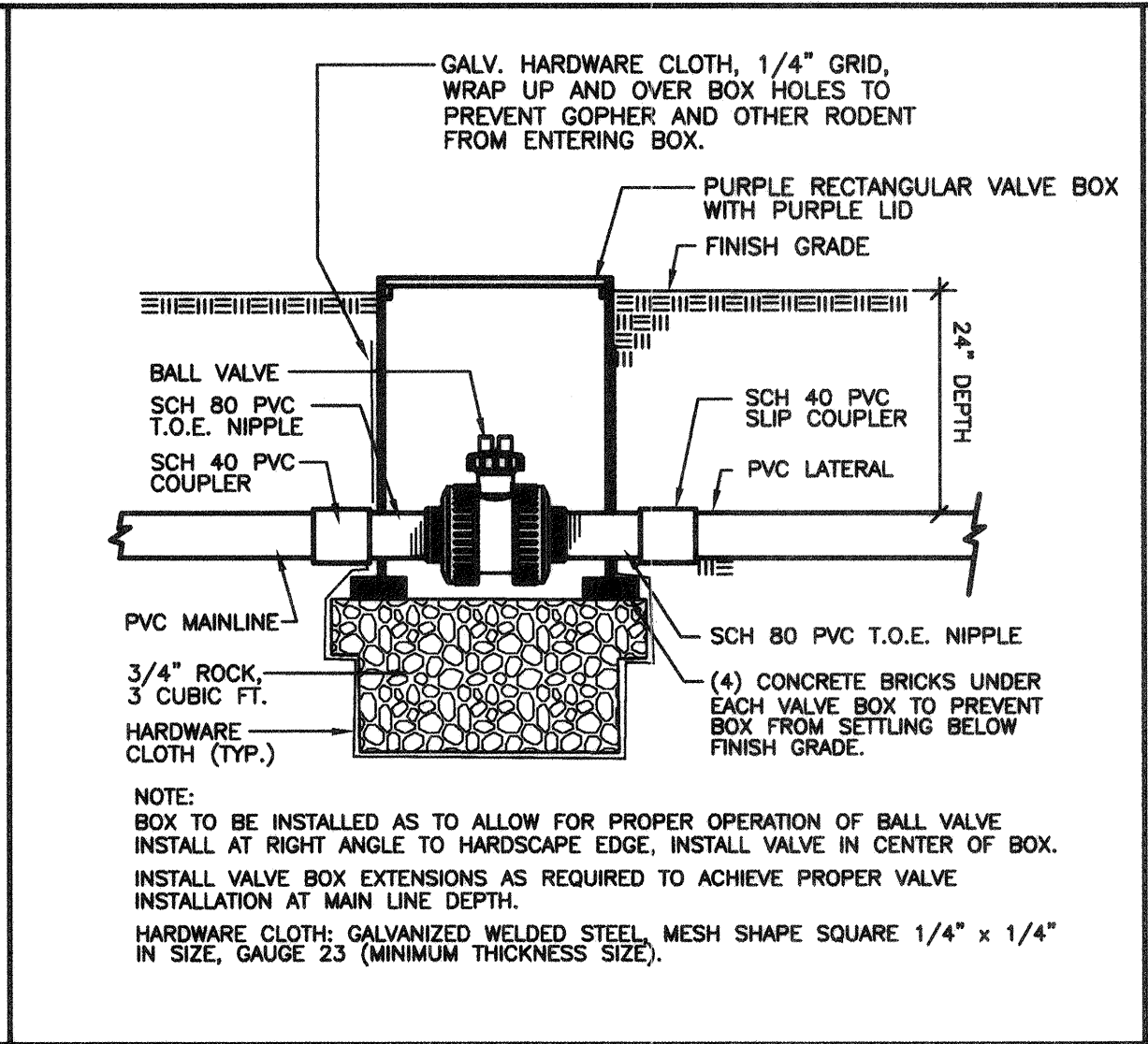
SHEET **7**
 OF **8**
 DRAWING NO.
Y-1-836



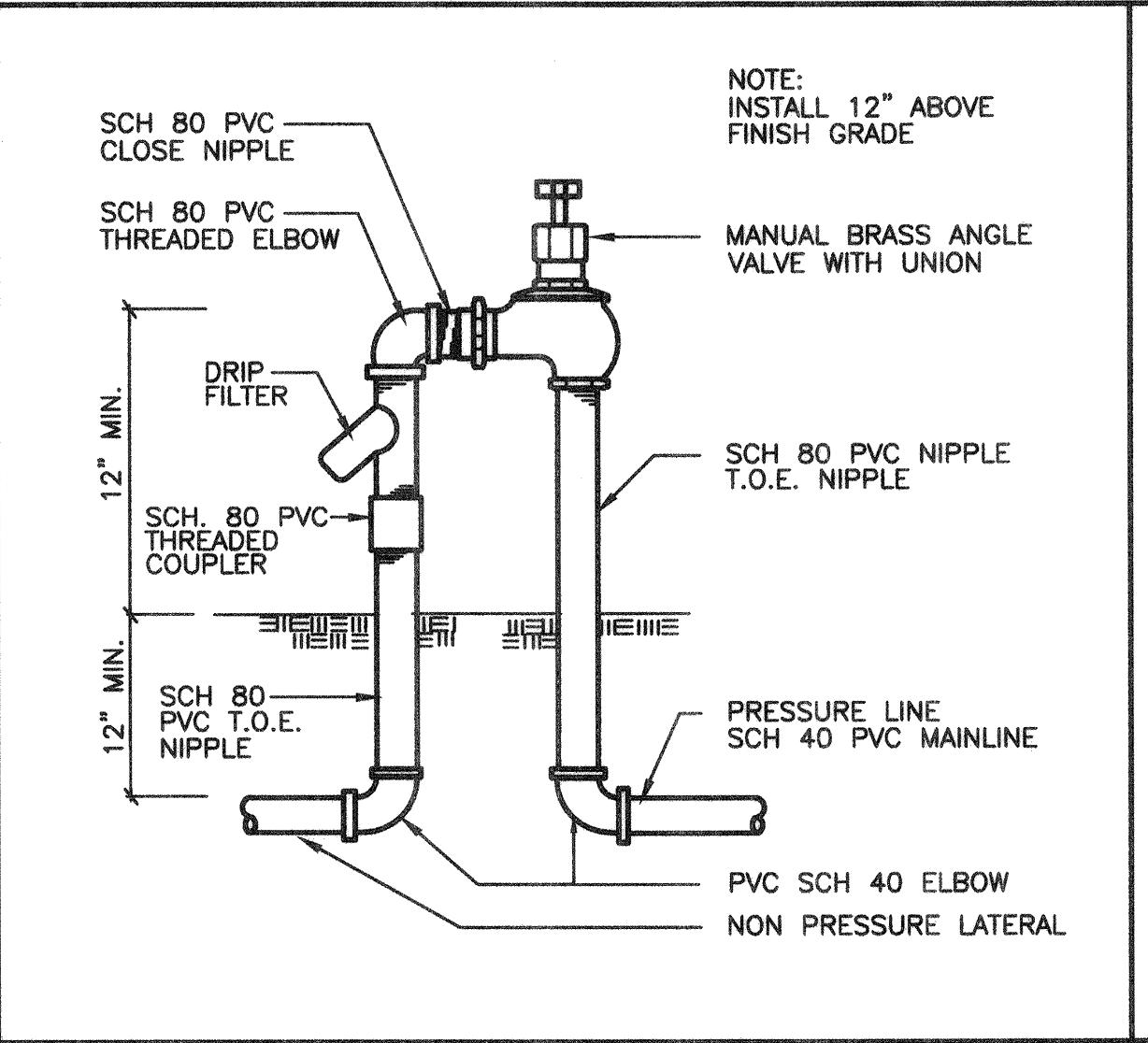
PLOT DATE: 3/23/15
 SAVE DATE: 3/20/15
 TO: P:\PROJECTS\MP0071401 MEINERS OAKS SWALE DESIGN\CAD\PLANS\LANDSCAPE\1464 SHEET 8 L-DETAILS.DWG



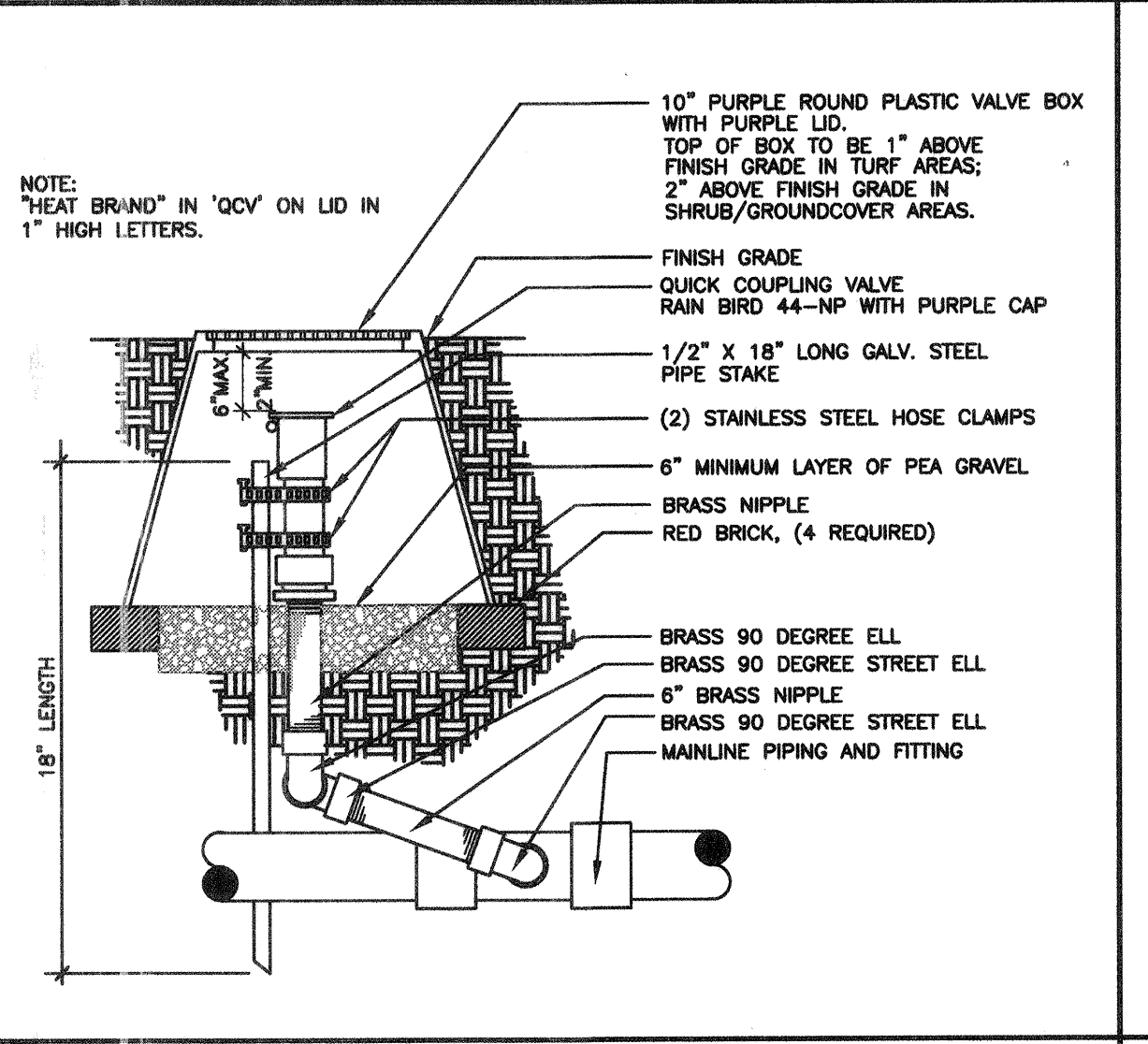
1. MAINLINE WATER FILTER W/ PRESSURE REDUCING VALVE



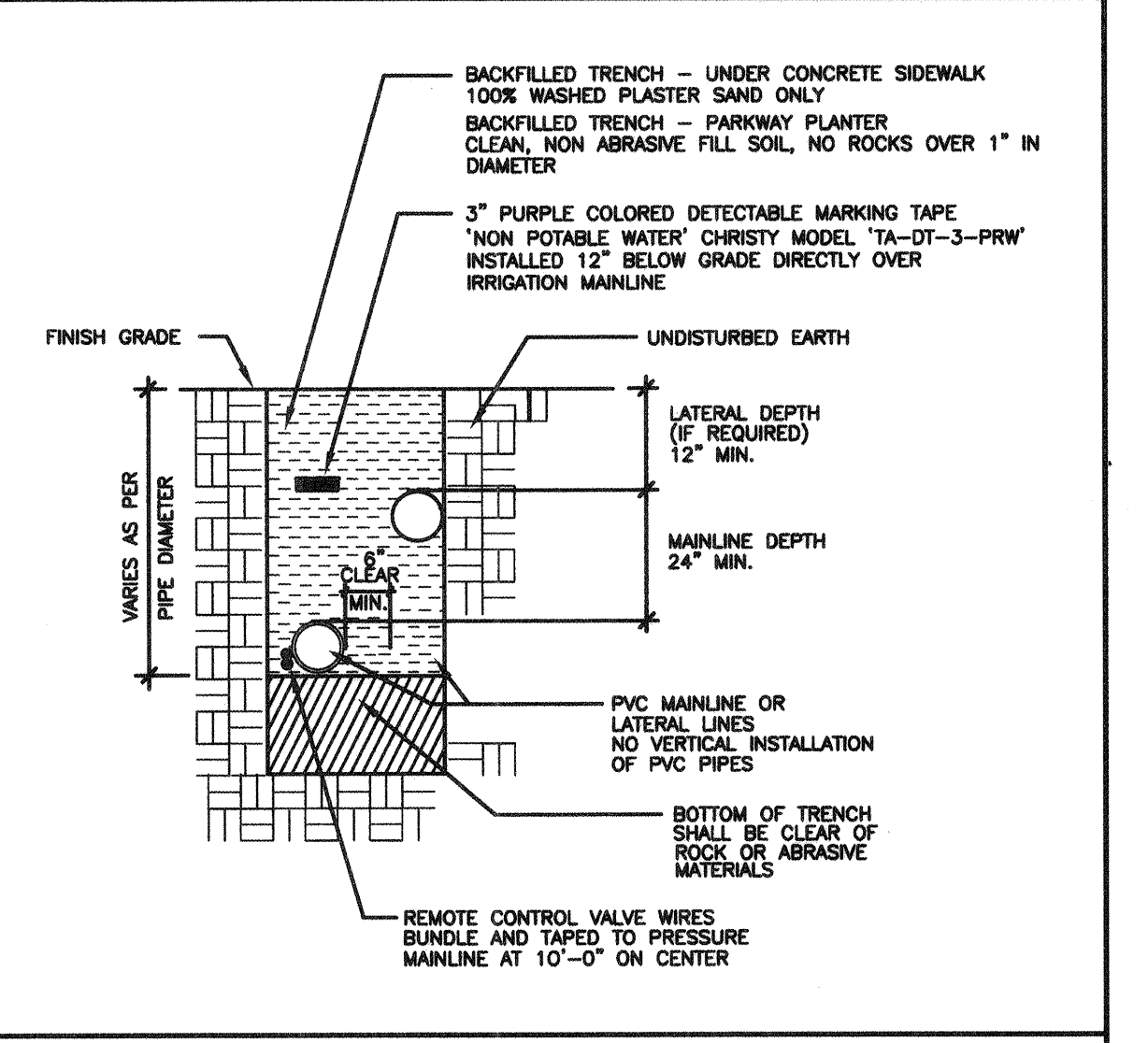
2. SCH. 80 PVC BALL VALVE



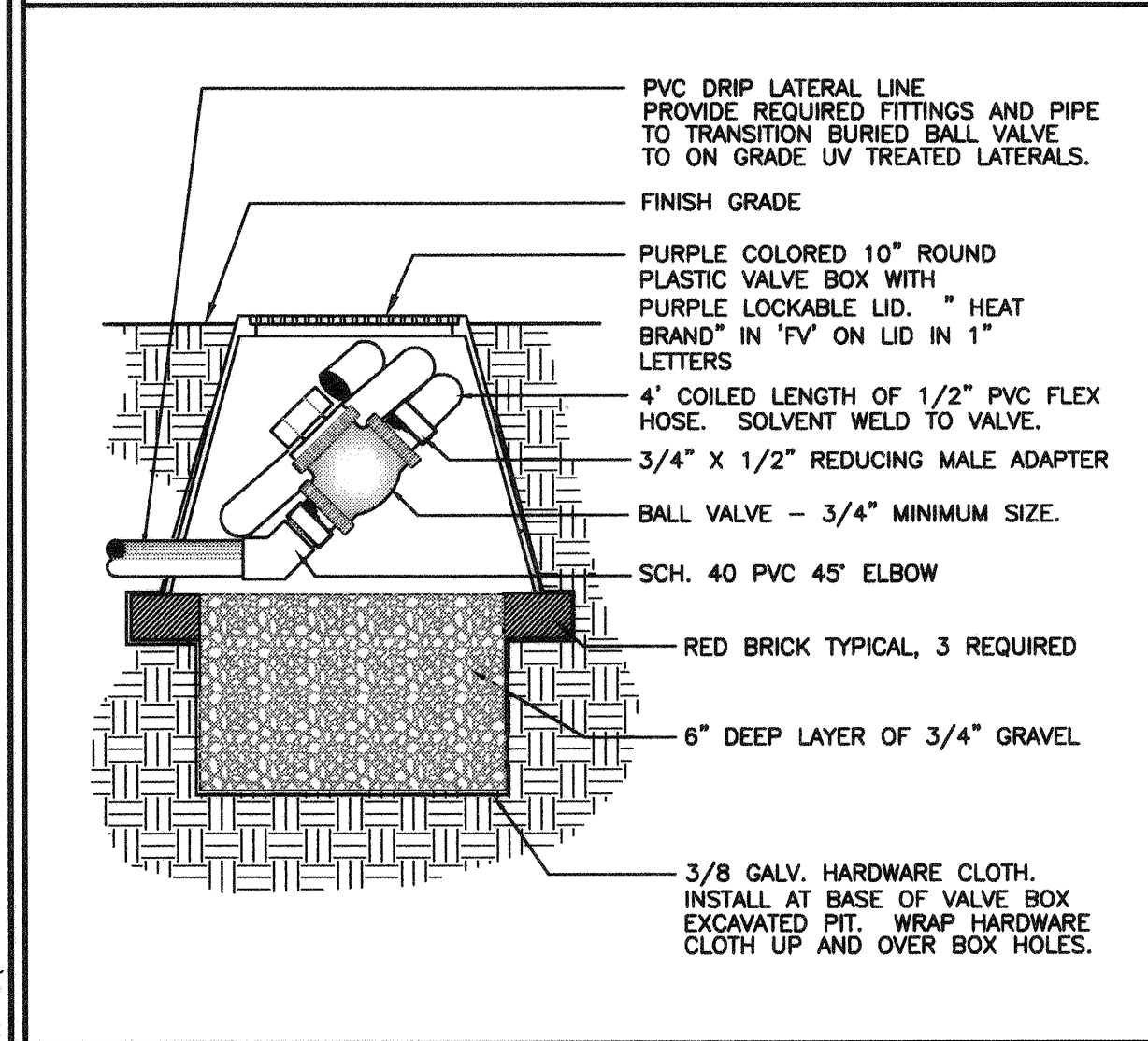
3. MANUAL IRRIGATION VALVE



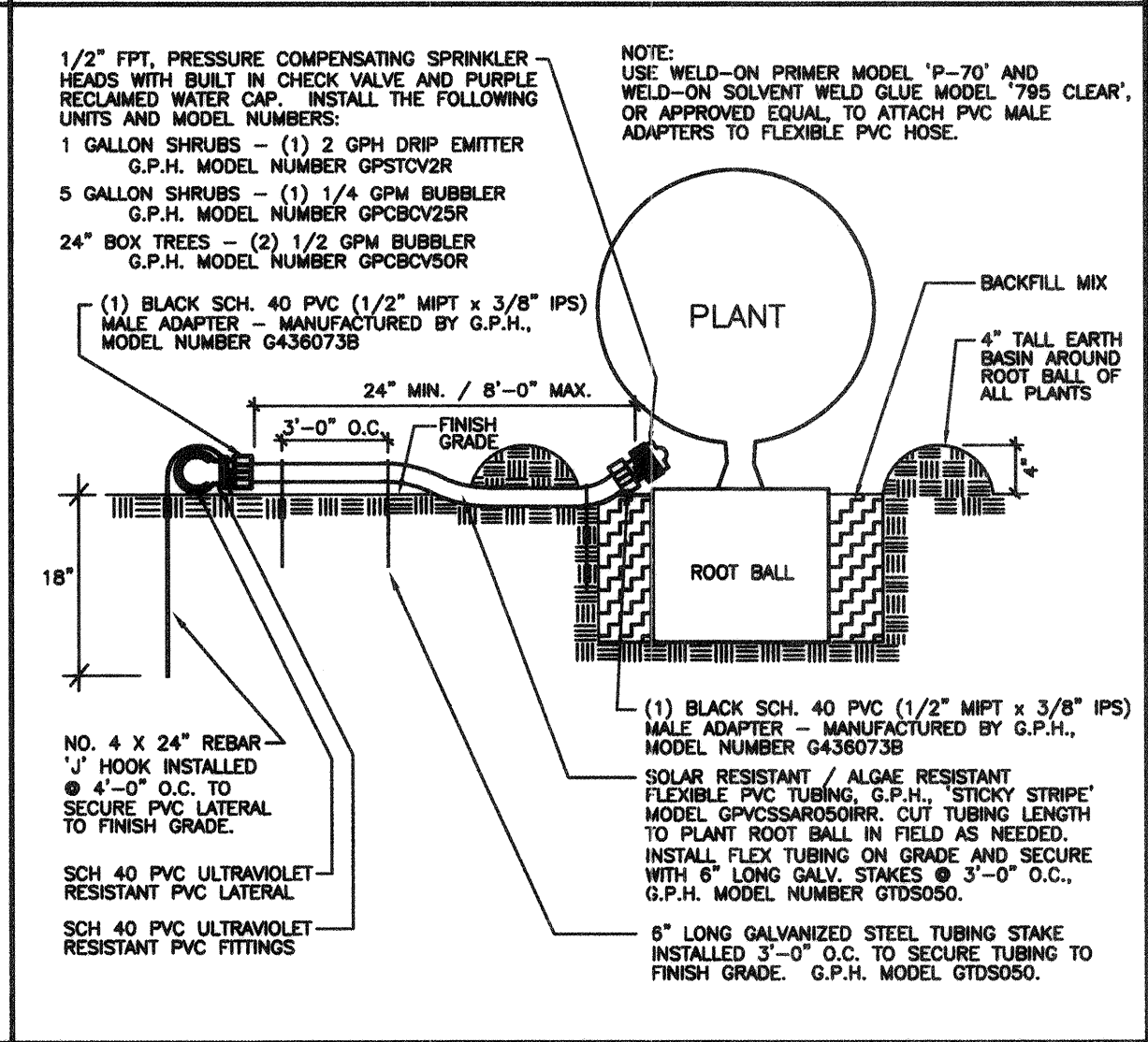
4. QUICK COUPLER IN VALVE BOX



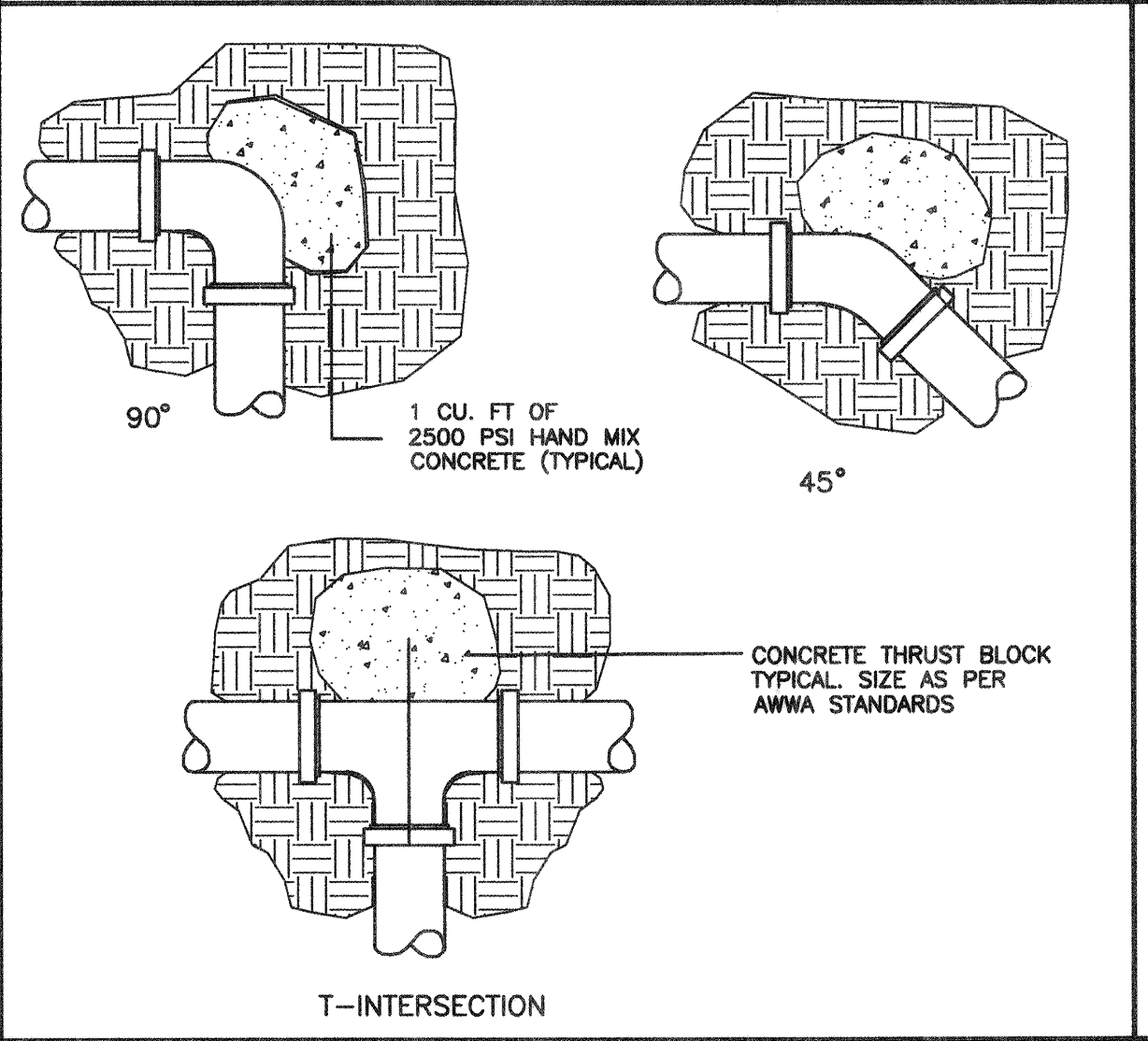
5. IRRIGATION PIPING / TRENCH SECTION



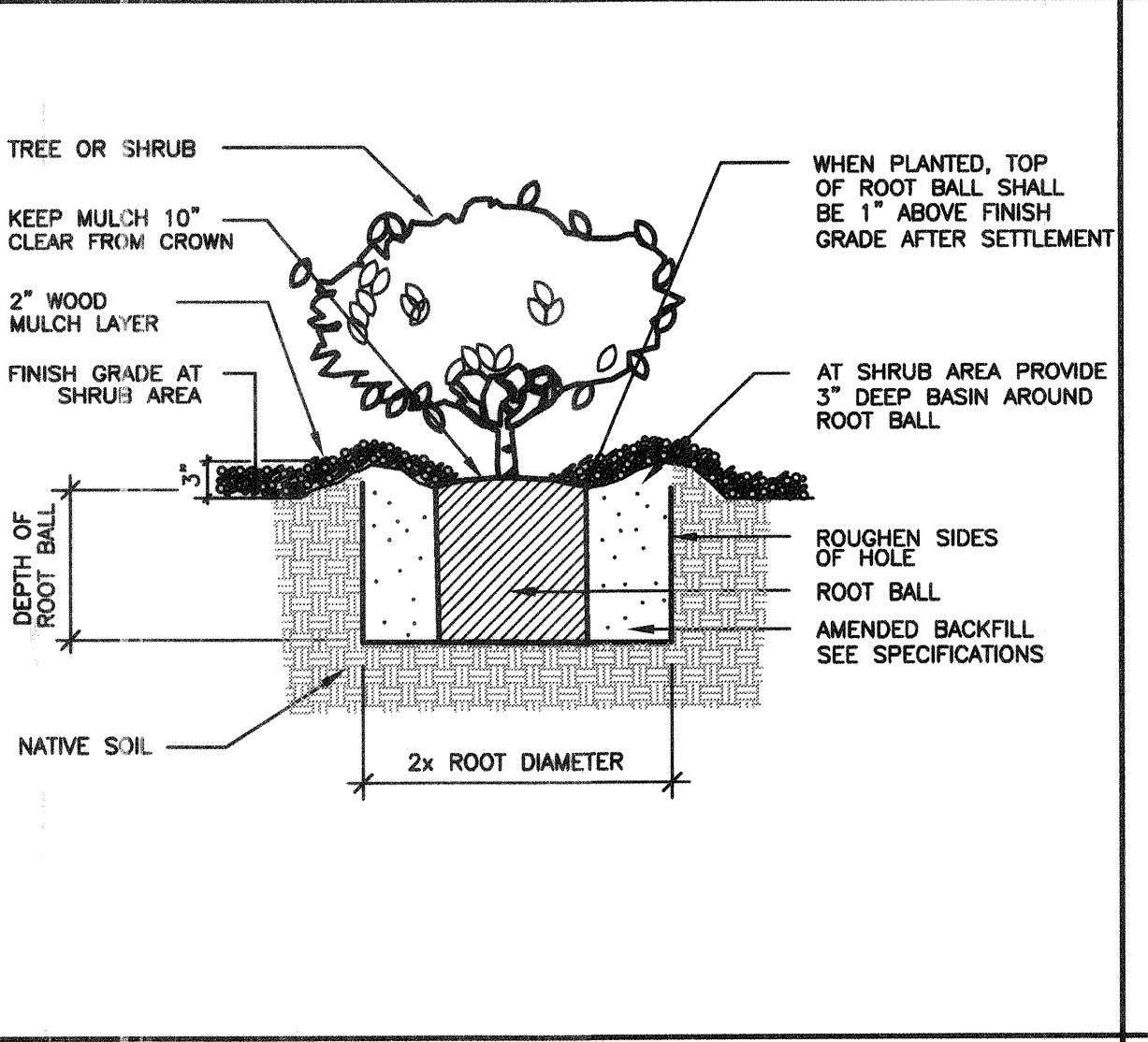
6. DRIP SYSTEM FLUSH VALVE



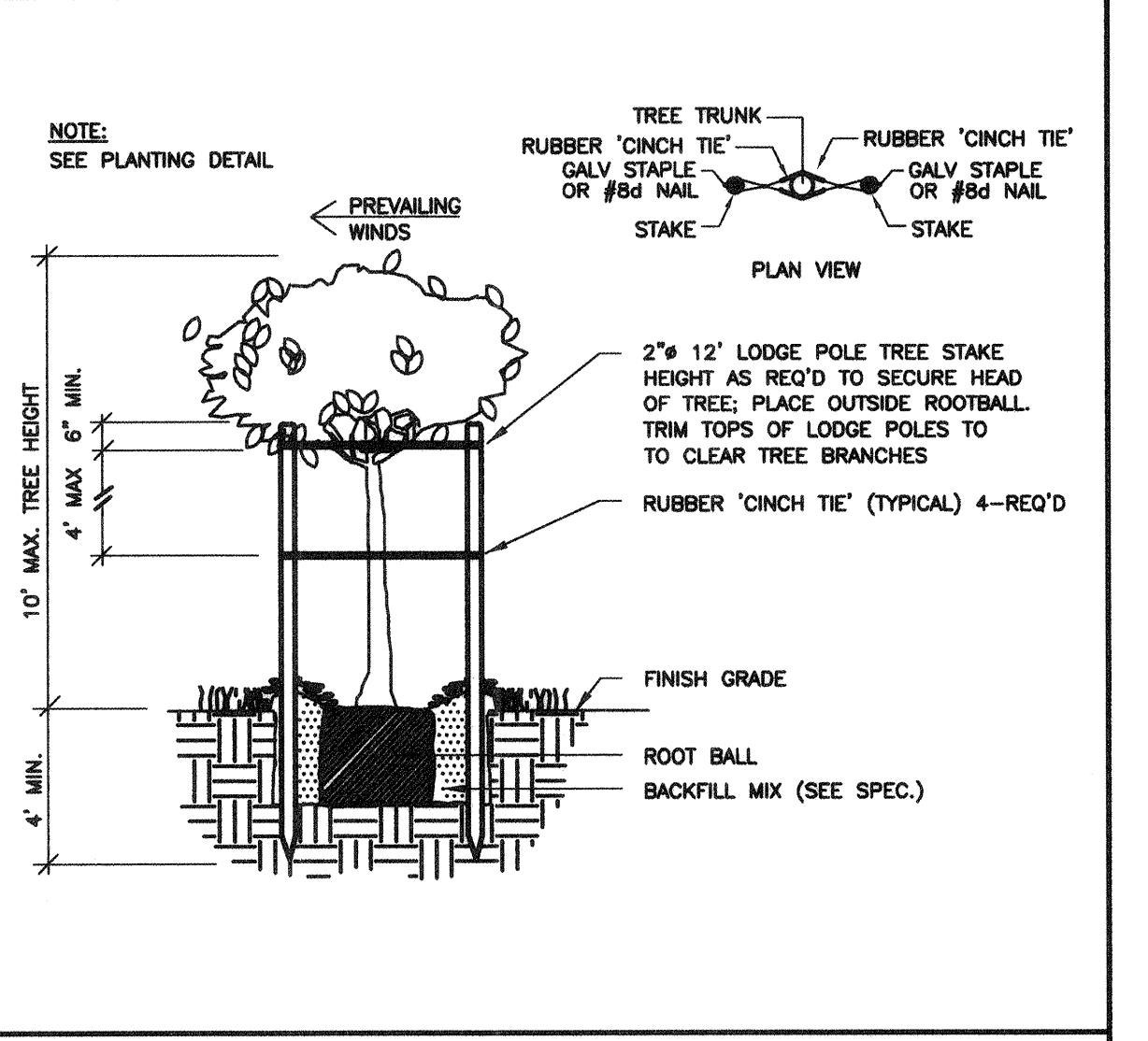
7. DRIP EMITTER / FLOOD BUBBLER ON GRADE



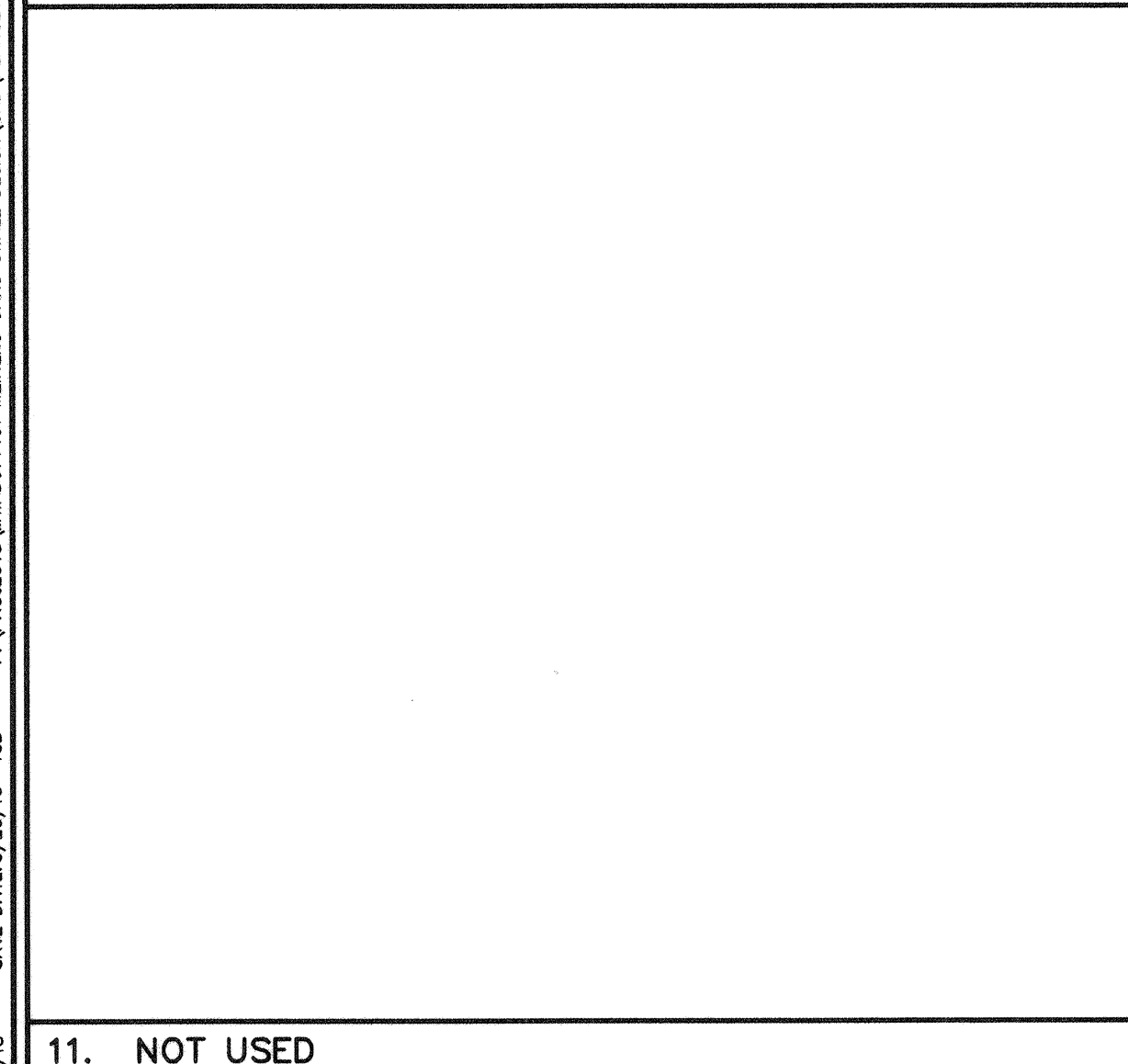
8. CONCRETE THRUST BLOCK



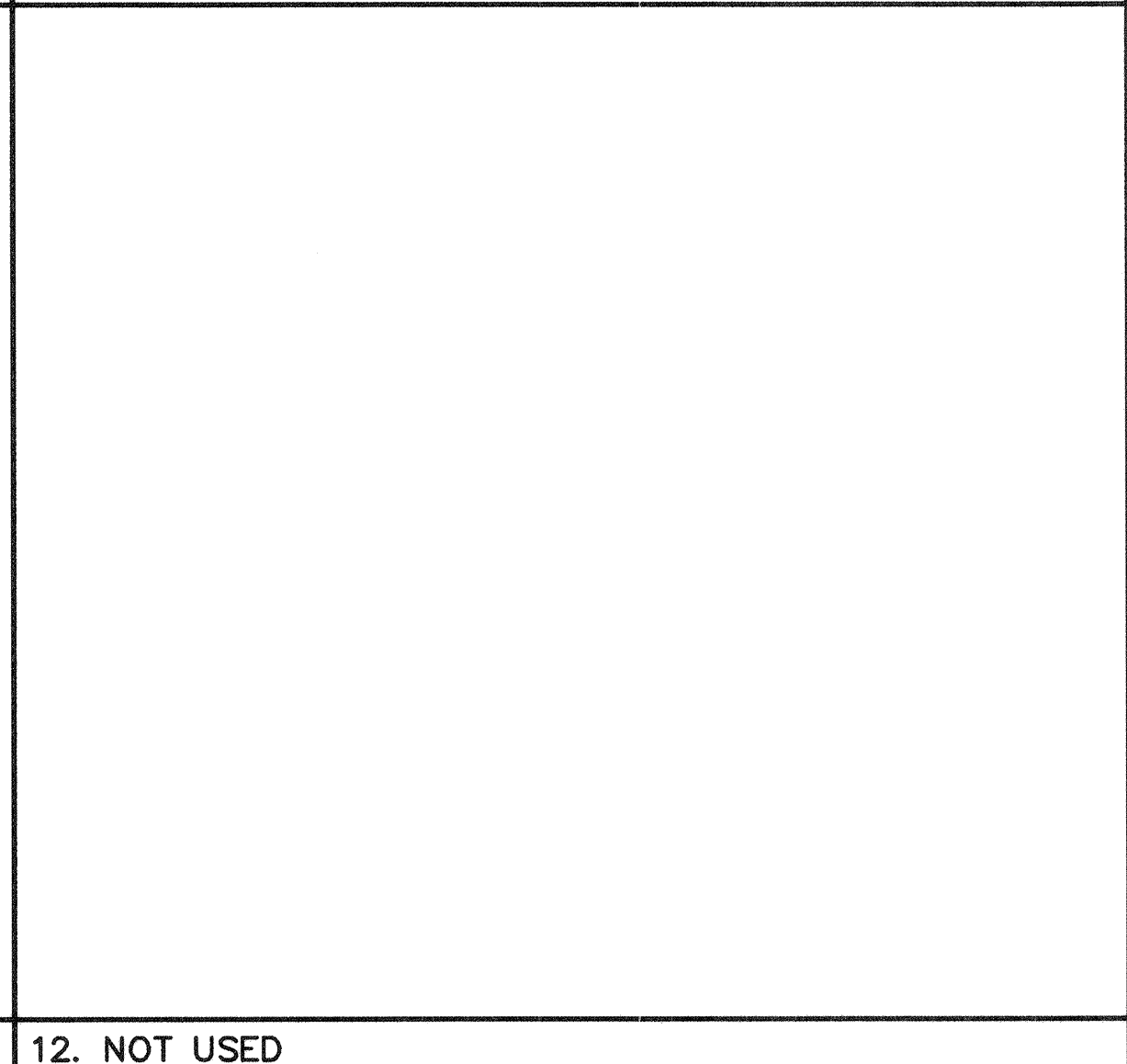
9. SHRUB PLANTING



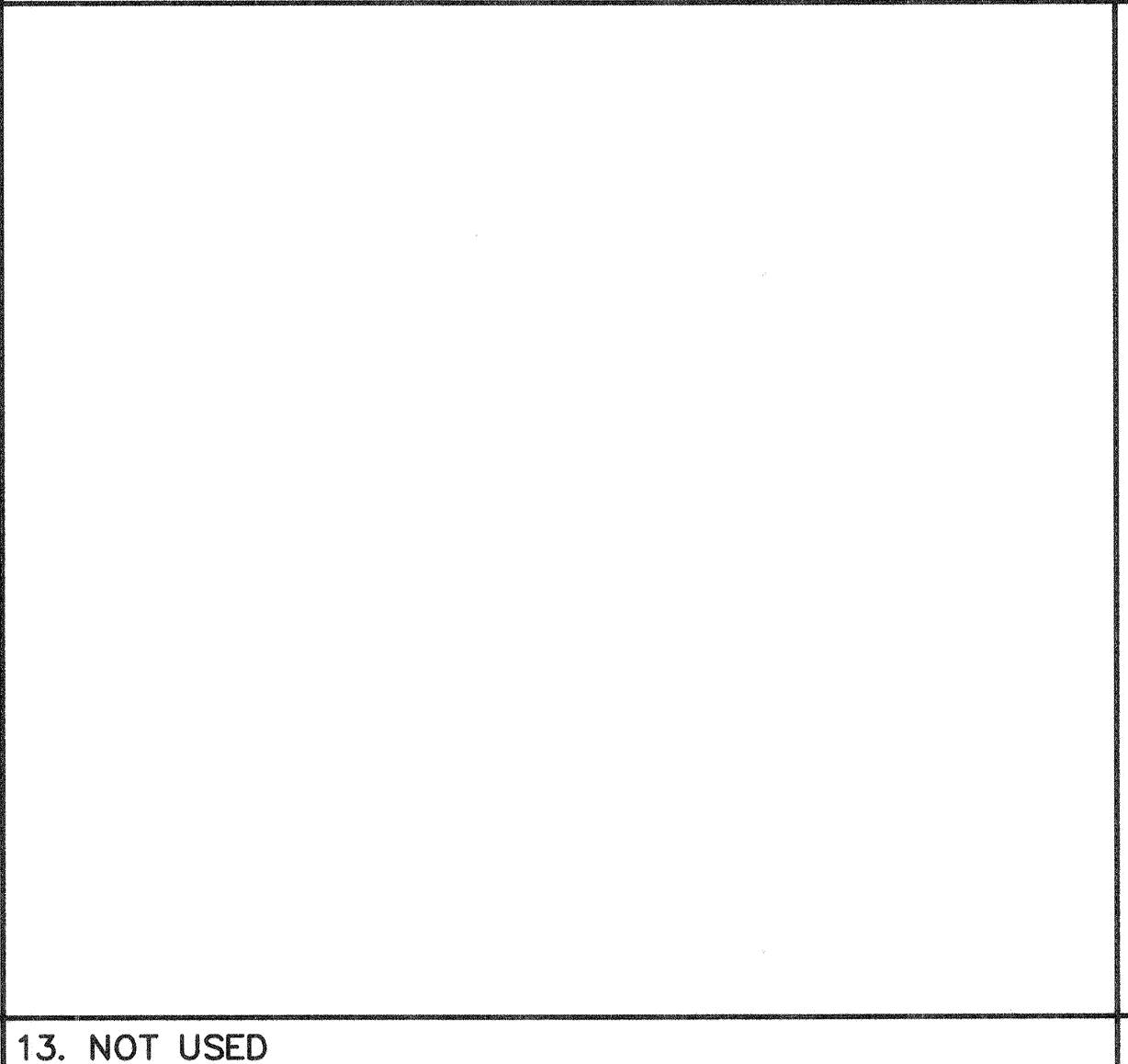
10. TREE STAKING



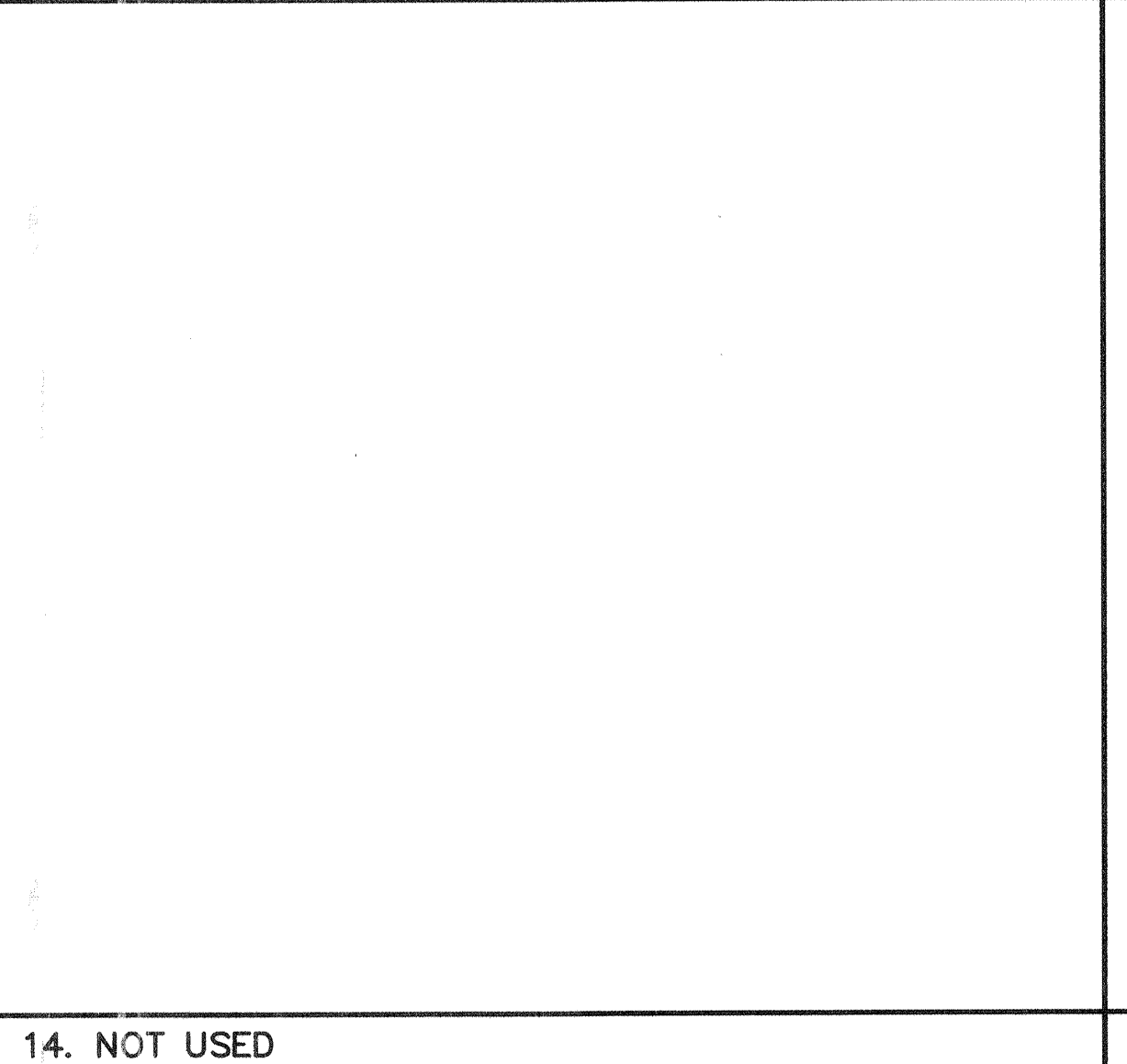
11. NOT USED



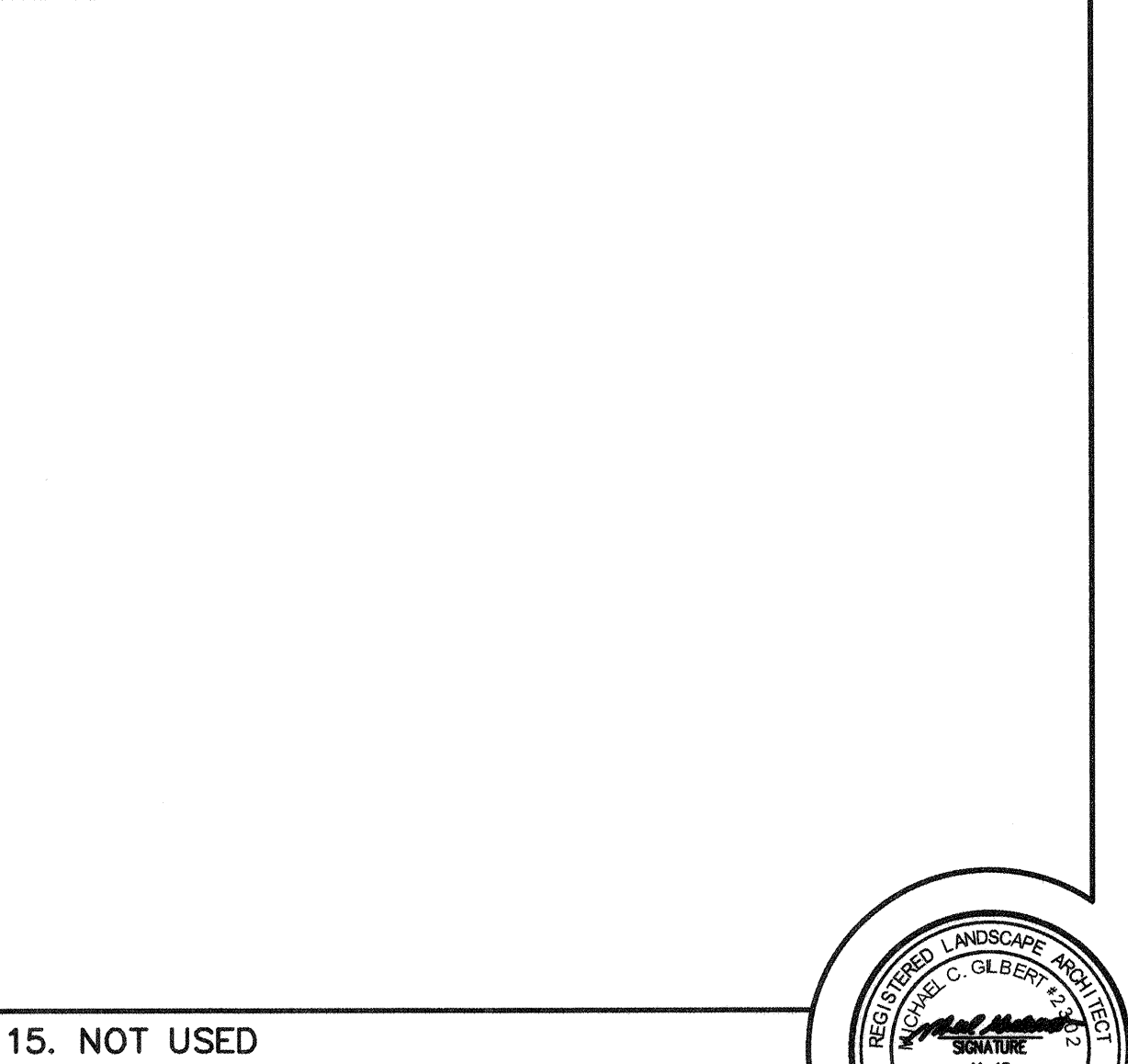
12. NOT USED



13. NOT USED



14. NOT USED



15. NOT USED

REVISION	DESCRIPTION	APP.	DATE

PREPARED BY:
JORDAN, GILBERT & BAIN
 LANDSCAPE ARCHITECTS, INC.
 3350 LOMA VISTA ROAD, VENTURA CA 93003
 (805) 842-3841 FAX (805) 842-8814

MG
 DESIGNED
 TC
 DRAWN
 MG
 CHECKED

PROJECT MANAGER: *Mark Williams* 3-18-15
 DATE
 DEPUTY DIRECTOR: *David...* 3/26-2015
 DATE
 DISTRICT DIRECTOR: *John...* 3/27/2015
 DATE

COUNTY OF VENTURA
PUBLIC WORKS AGENCY
WATERSHED PROTECTION DISTRICT

SPEC. NO.
WP15-14
 PROJ. NO.
40545

URBAN LID RETROFIT AT MEINERS OAKS
 LANDSCAPE DETAILS
 SHEET **8**
 OF **8**
 DRAWING NO.
Y-1-837

