

Los Angeles Section

Monthly: Est. 1913

ORANGE / SAN_BERNARDINO/RIVERSIDE / SAN_LUIS_OBISPO / SANTA_BARBARA/VENTURA / DESERT /
SOUTHERN SAN_JOAQUIN / METROPOLITAN LOS ANGELES

PRESIDENT'S MESSAGE

Jerry Burke, P.E., M.ASCE, APM, QSD, ENV SP
Los Angeles Section President

VOL. LVIII NO. 1

In This Issue page

HISTORY & HERITAGE	1,3
CLIMATE SAFE INFRASTRUCTURE.....	2
4 FUTURISTIC GREEN AIRPORTS	4-5
INTRODUCING ACCESSENGINEER.....	5
LEGISLATIVE UPDATE.....	6-7, 9
SAVE THE DATE FLYER	8
PROFESSIONAL DIRECTORY.....	10-11

HISTORY & HERITAGE



If you are receiving this newsletter, it is because you are a member of the Los Angeles Section of ASCE. We're the 2nd largest Section within ASCE. Only the Texas Section is larger and it's the includes whole state.

The Los Angeles Section has a long, rich, vibrant history of furthering and promoting the Civil Engineering profession. You and I are lucky to be a part of a Section with such a rich heritage. Some of the largest Civil Engineering companies today were founded right here in the Los Angeles Section, i.e. AECOM, RBF, Psomas, Parson, C.F. Braun, and other large

firms founded in our section. Just as important are the small and midsize firms that we don't have the space to mention yet have provided valuable services to their clients.

Also contributing to the history and heritage of the Los Angeles Section were the Civil Engineers who worked at the Public Agencies/Special Districts/Utilities within our Section, MTA, City of Los Angeles, County of Los Angeles, Los Angeles DWP, Southern California Edison, Southern California Gas company (now Sempra), Orange County Sanitation Districts, Los Angeles County Sanitation Districts to name a few. Each of these public agencies/special districts/utilities employed Civil Engineers who researched and performed the investigative work that lead to the very standards you and I follow today as well as the infrastructure that you and I maintain today. The Los Angeles Section includes a long list of individuals who have contributed to furthering our profession of which you and I should be proud to belong.

On Saturday March 3rd, we will induct 47 individuals into Life Member Status at the Los Angeles Section annual Life Member Brunch. Take time to look the individuals on the list to see if perhaps you worked with any of them. Even if you didn't, I hope you will make plans to attend our brunch and learn about the accomplishments of those who attend.

Just FYI, the Life Member Committee meets the first Thursday of every month at 10 am in Tustin at the offices of Gayle Stewart Enterprises and everyone is invited. BUT, they have a call in number for those who live out of town. Contact Larry Lewis at ml3lewis@aol.com or call 714.258.8306 to get the call in number.

Along the lines of History, the Los Angeles Section is proud be the location of the inaugural Utility Engineering and Surveying (UESI) 2018 Surveying & Geomatics Conference at Cal Poly Pomona in April. UESI is ASCE's newest Institute with a focus in five active divisions: Pipeline, Surveying & Geomatics, Utility Infrastructure Asset Management, Utility Risk Management and Standards.

So you have plenty of time to plan to attend not only the annual life member lunch in March 2018 but also 1st UESI conference at Cal Poly Pomona in April 2018.

continued on page 3



On The Importance of Climate Safe Infrastructure

by Dr. Cris B. Liban, P.E., ENV SP, F.ASCE, California Climate Safe Infrastructure Working Group Member, Chair, ASCE National Committee on Sustainability



Regardless of one's politics, a unifying philosophy that brings us all to the table is the realization that infrastructure has been a neglected element of society; and the urgent need to address it is now!

Every four years, ASCE provides a comprehensive assessment of our nation's 16 major infrastructure categories through the Infrastructure Report Card (www.infrastructurereportcard.org). The Report Card assesses the infrastructure categories' conditions and needs, assigning grades and making recommendations to raise those grades. Unfortunately, not much has improved since 1998. ASCE has yet to give a grade out of the "D" range; in 2017, America's infrastructure earned a "D+".

Contrast this with the polarizing discussion on climate change and its potential impact to infrastructure, the economy, and to us as a human race. This may be changing. A definitive report (Climate Science Special Report, science2017.globalchange.gov) released by the White House in November 2017 asserts that based on "a large body of scientific, peer-reviewed research," global annually averaged surface air temperature has increased by about 1.8 Fahrenheit (1.0 Celsius) over the last 115 years (1901–2016). In addition, the report indicates that "this period is now the warmest in the history of modern civilization".

As civil engineers, we are integral to the planning, design, construction, operation, maintenance, decommissioning, and renewal of infrastructure systems. ASCE Policy 488 (<http://www.asce.org/issues-and-advocacy/public-policy/policy-statement-488-greenhouse-gases/>) provides guidance and supports a number of public and private sector strategies and efforts to achieve significant reductions in greenhouse gas (GHG) emissions through the planning, design, construction, renewal, operation, maintenance and decommissioning of existing and future infrastructure systems. Doing so fosters progress and creates opportunities for civil engineering leadership to significantly lead reducing GHG emissions.

The political contrast between infrastructure and climate change cannot be taken lightly. As there are observed increases in the occurrence of severe weather events, extreme heat and flooding, and increasing surge and water impacted areas that may be due to sea level rise; we need to consider a new baseline in building new infrastructure and maintaining or retrofitting the existing ones. This is important as the need for a reliable and safe infrastructure system is critical to continue on with the conduct of all aspects of our lives, our society and our economy.

In Fall 2016, the California State Legislature passed AB2800 (Quirk), "Climate change: infrastructure planning" that requires the California Natural Resources Agency, by July 1, 2017, and every 3 years thereafter, to update the state's climate adaptation strategy

to identify vulnerabilities to climate change by sectors and priority actions needed to reduce the risks in those sectors. This bill put California at the forefront of making infrastructure more resilient.

This bill, through July 1, 2020, also requires state agencies to take into account the current and future impacts of climate change when planning, designing, building, operating, maintaining, and investing in state infrastructure. The bill also would require the establishment of a Climate-Safe Infrastructure Working Group for the purpose of examining how to integrate scientific data concerning projected climate change impacts into state infrastructure engineering.

California Natural Resources Secretary John Laird appointed me to be a member of the Working Group early this year, with the endorsement of ASCE. Other members of the Working Group consist of registered professional engineers with specified relevant expertise from the Department of Transportation, the Department of Water Resources, the Department of General Services, and other relevant state agencies; scientists with specified expertise from the University of California, the California State University, and other institutions; and licensed architects with specified relevant experience. The Working Group will convene its first meeting on January 18, 2018 in Sacramento; by mid to late 2018 (ideally by July 1), the Working Group is expected to develop and make specified recommendations to the Legislature and the Strategic Growth Council on how to incorporate climate change impacts to infrastructure.

The deliberations are expected to be robust and comprehensive. Among the considerations are the current informational and institutional barriers to integrating projected climate change impacts into state infrastructure design; critical information that engineers responsible for infrastructure design and construction need to address climate change impacts; and selecting an appropriate engineering design for a range of future climate scenarios as related to infrastructure planning and investment.

The ASCE Committee on Sustainability has been charged by our Board of Direction to coordinate the efforts on these and related issues. One of its affiliate committees, the Committee on Adaptation to a Changing Climate, will release early next year a 240-page manual of practice on adaptive design and risk management. That manual is expected to provide the foundation for ASCE standards. Additionally, the Committee on Sustainability has proposed the development of an ANSI standard for sustainable infrastructure projects. This standard is anticipated to be performance-based and will provide guidance on how to incorporate the principles of sustainability in all facets of the planning, design, construction, and operations and maintenance process of the asset over its life cycle.

As you can see, there's more to this and we need civil engineers to be involved. I would like to hear input from you on the above topics. Your contribution means a lot to the State as well as to our organization. Please contact me at cliban@hotmail.com to engage.

One more thing. By the time you are reading this article, members in various parts of Southern California will be cleaning up from the December wildfires. I have heard of a few members whose family had to evacuate but to the best of my knowledge everyone is okay. We have a Section Committee "Disaster Preparedness" which could be very helpful not only at assessing damage but perhaps helping members after such a tragedy. My last call for new committee

members yielded zero volunteers. So, I'll put it out there again, if anyone would like to get more involved with ASCE and is looking for a place to serve, please consider contacting me about working on the Disaster Preparedness committee and contact me at jburke@ieua.org.

It is a pleasure to serve as your President.

ARTICLE

Please welcome our new ASCE members from November 2017!!

Desert Branch

Giovanny Rodriguez Quevedo, S.M.ASCE

Metropolitan Los Angeles Branch

Dalkeith O'Neil Mullings, S.M.ASCE
 Jaqueline Michelle Erazo, S.M.ASCE
 Feodor Cruzat Rapadas, S.M.ASCE
 Jacob Almazan, S.M.ASCE
 Brenda Paola Aguilar, S.M.ASCE
 Amr Mabrouk, Aff.M.ASCE
 Joselyn Iveth Perales, S.M.ASCE
 Sandra Cervantes, S.M.ASCE
 Alejandro Cerano-Lopez, S.M.ASCE
 Alejandro Vasquez, S.M.ASCE
 Dixie Escalante, S.M.ASCE
 David San, S.M.ASCE
 Hashem Basrawi, I, S.M.ASCE
 Aditya Saxena, S.M.ASCE
 Ruben Alvarado, Cedillo, S.M.ASCE
 Allison Dayana Guevara Samame, S.M.ASCE
 Abhishek Senthil Kumar, S.M.ASCE
 Cassandra Luu, S.M.ASCE
 Carlos Magallon, Jr., S.M.ASCE
 Karelly Dorado, S.M.ASCE
 Sylvia Denise Sonora, S.M.ASCE
 Freddy Francisico Quijada, S.M.ASCE
 Jason Yu Long Chou, S.M.ASCE
 Eliana R Goehring, S.M.ASCE
 Janelle Coleen Dela Cueva, S.M.ASCE
 Jaydip Vasoya, S.M.ASCE
 Luis Montalvo, S.M.ASCE
 Kyle Demsher, S.M.ASCE
 Nicolette Paige Seargeant, S.M.ASCE
 Benson Lim, S.M.ASCE
 Ali Asadyari Darian, EIT, A.M.ASCE
 Alex Petroy, S.M.ASCE
 Sean Pukdam, S.M.ASCE
 Jack Hernan Cuateco, S.M.ASCE
 Andrea Garoz, S.M.ASCE
 Sergei Terzaghi, A.M.ASCE
 Ishani Singal, S.M.ASCE

Wenxuan Wang, S.M.ASCE
 Alberto Hernandez, Jr., S.M.ASCE
 Ziman Jia, S.M.ASCE
 Abe A Zuckerman, S.M.ASCE
 Anita Sie, S.M.ASCE
 Iric Hong, S.M.ASCE
 Marie-Pierre Delisle, S.M.ASCE
 Daniel Chang, S.M.ASCE
 Jonathan Mark McGinn, S.M.ASCE
 Ronald Eugene Henry, III, S.M.ASCE
 Ophir Bonen, S.M.ASCE
 Ana Clarisa Sitan, S.M.ASCE
 Nicholas Sam Ho, S.M.ASCE

Orange County Branch

Jessica Avila, Aff.M.ASCE
 Alma Ruiz, S.M.ASCE
 Dei Gomez, S.M.ASCE
 William Zuniga, P.E., M.ASCE
 Asia Reeves, S.M.ASCE
 George Ahl, S.M.ASCE
 Saurabh R Kansara, S.M.ASCE
 Muwei Yang, S.M.ASCE
 Thomas Nguyen, S.M.ASCE
 Erwin Adonis Cruz, S.M.ASCE
 Trung Do, S.M.ASCE
 Kate Gasparro, S.M.ASCE
 Jacob Lillengreen, S.M.ASCE
 Vesta Afzali G., S.M.ASCE
 Jason Nguyen, S.M.ASCE
 Yaman Jassam, S.M.ASCE
 Abhishek Gobind Jiandani, S.M.ASCE
 Aws Salahaldin, S.M.ASCE
 Sarahi Olivia Leal, S.M.ASCE
 Justin YS Lee, S.M.ASCE

San Bernardino-Riverside Branch

Devon William Fox, S.M.ASCE
 Martin Velarde, Jr., S.M.ASCE
 David Roy Bachtel, A.M.ASCE
 Roy August Bletscher, S.M.ASCE

Mark Hamiter, S.M.ASCE
 Dominick Banuelos, S.M.ASCE
 Shaun Cary, S.M.ASCE
 Lane Mattson, S.M.ASCE
 Nathan Reid Smith, S.M.ASCE
 Arupa Adhikary, S.M.ASCE
 Khalid Saoud, S.M.ASCE
 Roger Casas, S.M.ASCE
 Jacob Andrew Branstetter, S.M.ASCE
 Eric Olea, S.M.ASCE

San Luis Obispo Branch

Colin Mark Hentges, S.M.ASCE
 Joe Giesa, S.M.ASCE
 Bragg-Flavan Sarah, A.M.ASCE

Santa Barbara-Ventura Branch

Mariana Martinez, S.M.ASCE
 Lucas Johnson, S.M.ASCE
 Laura Lizbeth Yanez, P.E., M.ASCE
 Maher Amjad Hanbali, Aff.M.ASCE
 Taylor Stephanie Walsh, S.M.ASCE
 Laurene Shelton, C.Eng, EIT, Aff.M.ASCE

Southern San Joaquin Branch

Fernanda Rocha, S.M.ASCE
 Braulio Saul Alvarez, S.M.ASCE



4 Futuristic Green Airport Approaches

by Griffin Brumbaugh



Welcome to your one-way ticket to the future of sustainable air travel.

Envision-awarded airports around the country are looking to the future to save you time and money.

The Institute for Sustainable Infrastructure – an organization cofounded by ASCE in 2011 – developed the Envision rating system to measure sustainable infrastructure projects.

Also, by harvesting the rainwater that collects in the quarry and pumping it into the irrigation system, the project saves more than 13.1 million additional gallons of potable water used for irrigation.

The Water Source Geothermal project will significantly reduce the airport's dependency on its natural-gas fired boilers, which use on average 39,700 therms of natural gas per month. Emissions associated with the use of these boilers is significant, but the Water Source Geothermal project will reduce emissions of carbon monoxide, nitrogen oxide, particulate matter of both 10 and 2.5 micrometers or less in diameter, sulfur dioxide, and volatile organic compounds – all of which contribute to poor air quality.

2. Efficiency Approach

The Providence's Runway 5 Extension at T.F. Green Airport project, an Envision Gold winner, lengthened the T.F. Green's main runway to 8,700 feet as part of a multiyear program to better accommodate aviation activity demand and enhance safety areas.



The extension improves flight efficiency through increased payloads and reduced weight penalties, while also accommodating long-haul service to the West Coast.

The project requires 34 percent less energy, resulting from design plans focused on resource conservation and reduced maintenance as key objectives. The project also features extensive LED lighting, and the design team evaluated lighting cables to determine that replacements could avoid disruption in aircraft activities.

The reduction in required pavement for the project also helped better manage stormwater.

3. Recycle-Everything Approach

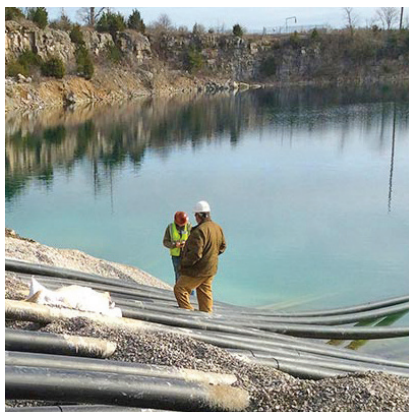
The Detroit Metropolitan Airport's Runway and Associated Taxiways Reconstruction project, an Envision Silver winner, involves reconstructing an associated taxiway system that encompasses 6.5 miles of airfield pavement. The result is a safer connection for



Here are four future-minded sustainable airport approaches:

1. Renewable Energy Approach

The Water Source Geothermal project, implemented at the Nashville (TN) International Airport, earned an Envision Silver award for its closed-loop system that solves the cooling requirements of the airport's terminal building.



The project uses a quarry lake to chill water through lake-plate heat exchangers. Through this system, the airport saves more than 21.1 million gallons of potable water used in the airport's cooling towers and expects more than \$430,000 in electricity cost savings.

aircraft from the runway to the passenger terminals at the Detroit Metro Airport.

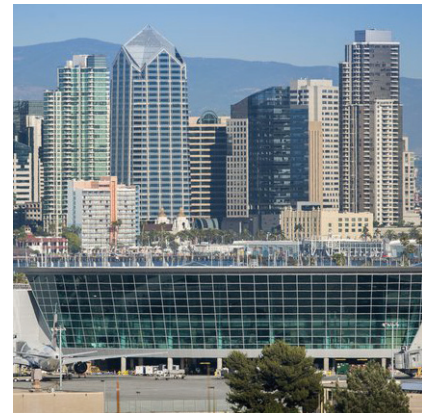
To reduce resource consumption, the project installed LED lighting and signage, reused stormwater for dust control (10 million-plus gallons of recycled water to date), and reused excavated materials, both on the project and in locations west of the runway, to balance the site and minimize maintenance needs. In addition, the contractor brought a concrete crusher on site to enable efficient pulverizing of materials for use on other projects.

The Runway and Taxiways Reconstruction project went beyond compliance with environmental regulations during construction by reducing existing impervious surfaces at the site, thus presenting long-term benefits to the ecological conditions on the airport. By minimizing the amount of pavement, stormwater runoff and the associated water quality impacts will decrease. This also minimizes future maintenance costs and the need for virgin materials.

4. Community Stimulus Approach

The San Diego International Airport's Green Build landside project became the first airport to earn an Envision rating. The Platinum award winner responds to community needs that provide for current and future demand for travel, while increasing customer service and serving as an economic stimulus for the San Diego region.

The project increases the quality of existing, operating, and recreational capacity for the public, while improving customer experience by providing 10 new aircraft gates, a dual-level roadway that separates arriving and departing passengers, more security lanes, and an expanded concession area.



At peak construction, the project created approximately 1,000 jobs, and with total economic impacts to include an estimated nearly 5,000 jobs over the course of the project.

The Airport Authority's small-business outreach program generated more than \$415 million in contracts for local businesses – with \$118 million going to small businesses – which in turn boosted local employment, training, and education, particularly among needy or disadvantaged groups.

Introducing AccessEngineering



by Thomas Smith III, ASCE Executive Director



At the core of ASCE's organizational goals is our continued quest to give you the value and support that you will need to excel in your civil engineering career. To make good on this pledge, we are pleased to offer you free access to the online reference tool AccessEngineering in partnership with McGraw-Hill Education. This online suite of technical content provides professionals, academics, and students across all disciplines access to some of the world's most used and authoritative engineering reference information, delivered right to your desktop or smartphone. The content is reviewed by a Faculty Advisory Board to ensure that it is comprehensive, up-to-date, and innovative.

With unlimited access to AccessEngineering, you can use the interactive tables, charts, and instructional videos to solve some of your most pressing day-to-day engineering challenges.

Some of the specific features include:

- Fast, faceted search tool to quickly get the information civil engineers need

- More than 1,000 instructional videos to demonstrate step-by-step solutions to real-world engineering problems
- Excel spreadsheet calculators to save you time
- A business suite of references and videos to help build management, presentation, and process skills
- Over 5,000 interactive graphs as well as thousands of downloadable tables to make it easier to use and analyze key data
- Critical global engineering news across all major disciplines.

As a member of ASCE, you are part of the largest professional civil engineering network in the world. And with your membership you have access to a wealth of benefits, including the new AccessEngineering, five free PDHs, periodic journal articles, Civil Engineering magazine, Salary Survey data runs, career development resources, member advantage discounts, and a variety of member-exclusive discounts on our products and services.

I encourage you to explore the full range of benefits of your membership, and thank you for helping us to further the civil engineering profession.



State Investments and Legislative Update

by Richard Markuson, CA Region 9 Legislative Advocate



Legislation: The California State Legislature has resumed in session as of January 3, 2018. Several deadlines and events are in January and February:

- Jan. 3 - Legislature Reconvenes.
- Jan. 10 - Budget must be submitted by Governor.
- Jan. 12 - Last day for policy committees to hear and report to fiscal committees fiscal bills introduced in their house in the odd-numbered year.

- Jan. 15 - Martin Luther King, Jr. Day holiday.
- Jan. 19 - Last day for any committee to hear and report to the floor bills introduced in that house in the odd-numbered year. Last day to submit bill requests to the Office of Legislative Counsel.
- Jan. 31 - Last day for each house to pass bills introduced in that house in the odd-numbered year.
- Feb. 16 - Last day for bills to be introduced.
- Feb. 19 - Presidents' Day holiday.

ASCE is watching a few two-year bills:

- **AB 1000 (Friedman): Water transfers – Oppose:** would prohibit a transferor of water from using a water conveyance facility that has unused capacity to transfer water from a groundwater basin, unless the State Lands Commission, in consultation with the Department of Fish and Wildlife, finds that the transfer of the water will not adversely affect the natural or cultural resources, including groundwater resources or habitat, of those federal and state lands. **2-year bill**
- **AB 1654 (Rubio): Water Conservation – Support:** would enhance existing reporting and drought response requirements. Urban retail water suppliers would report annually to DWR on the status of their water supplies for that year and whether supplies will be adequate to meet projected customer demand. If supplies are not adequate to meet demand, the water supplier would be required to implement the appropriate responses as described in their water shortage contingency analysis. **2-year bill**
- **SB 436 (Allen): California STEM Act of 2017 – Support:** establishes the California STEM Professional Teaching Pathway to recruit, train, support, and retain qualified science, technology, engineering and mathematics (STEM) professionals, including military veterans, as mathematics and science teachers in California. **2-year bill**
- **SB 623 (Monning): Safe and Affordable Drinking Water Fund – Oppose:** creates the Safe and Affordable Drinking Water Fund, administered by the SWRCB, and imposes water, fertilizer and dairy fees to fund safe drinking water programs. **2-year bill**

Recent Reports

Public Policy Institute of California published **Priorities for California's Water**. "This past year was a prime example of

California's highly variable climate — and a precursor of the types of extremes that are expected to become more common. After five years of drought exacerbated by record heat, 2017's record rain and snow brought more challenges — stressing dams and levees, causing landslides, and adding fuel to fire - prone landscapes.... In this policy brief we outline issues that are front and center for managing California's water supply and natural environment. We also suggest priorities for actions that would improve California's water systems and better support the state's residents, businesses, and ecosystems." This brief was part of a PPIC Water Policy Center forum held on October 26, 2017.

Carbon Balance and Management published **Revised Methane Emissions Factors and Spatially Distributed Annual Carbon Fluxes for Global Livestock**. "There has clearly been an alarming uptick in atmospheric methane in recent years, following a flattening of concentrations from 2000 to around 2007.... The new study found that a variety of guidelines introduced ... in 2006 to estimate methane emissions needed to be updated. That's because livestock are being bred to be larger than before (and are being fed more), and their manure is being managed differently — more often in huge 'anaerobic' waste lagoons that give off large volumes of methane. Once the study updated the methodology, it found that for 2011, global emissions were 8.4% higher from enteric fermentation and 36.7% higher from manure management.... The real question, though, is whether these changes are sufficient to account for rising atmospheric methane concentrations — something that the new study asserts."

Legislative Analyst's Office has released its report, "Evaluating California's Pursuit of Zero Net Energy State Buildings," examining the Governor's 2012 executive order that directed the state to increase "the number of state-owned buildings that are 'zero net energy,'" meaning they "generate as much energy onsite through renewable sources as they consume over a one-year period," finds that "a mandate for state buildings to be ZNE is not a necessary or cost-effective way for the state to achieve its GHG reduction goals" because "the state has already adopted a cap-and-trade program that limits total emissions from large emitters, such as electricity generators," and notes "we find that it is more important that the state assess whether achieving ZNE for each proposed building project would be cost effective by performing cost-benefit analyses."

Governor's Appointments



Bruce Delgado, of Marina, has been reappointed to the **Central Coast Regional Water Quality Control Board**, where he has served since 2011. Delgado has been mayor of the City of Marina since 2008 and a botanist for the U.S. Department of the Interior, Bureau of Land Management since 1988.



Jeffrey Young, of Santa Barbara, has been reappointed to the **Central Coast Regional Water Quality Control Board**, where he has served since 2000. Young has been an attorney at the Law Offices of Jeffrey Young since 1997. He was general counsel at the California Aquaculture Association from 1995 to 2000 and an associate at the Law Offices

of Raymond J. Pulverman from 1994 to 1997. He was owner and operator at Pacific Seafood Industries from 1983 to 1992. Young earned a Juris Doctor degree from the Santa Barbara College of Law and a Master of Science degree in marine fisheries from Humboldt State University.



Karl Longley, of Fresno, has been reappointed to the **Central Valley Regional Water Quality Control Board**, where he has served since 1999 and served from 1989 to 1997. Longley has been environmental engineer and program manager at the California State University, Fresno California Water Institute since 2005. He has served in several positions

at the California State University, Fresno College of Engineering since 1982, including professor, department chair, dean and dean emeritus. Longley was a partner and consulting engineer at Hanna Longley and Associates from 1983 to 1985 and a civil engineer at Strauss and Roberts Consulting Civil Engineers Inc. from 1981 to 1982. He served as a lieutenant colonel and environmental engineer in the U.S. Army from 1960 to 1981. Longley earned a Doctor of Science degree in environmental health engineering and a Master of Science degree in water resources and sanitary engineering from Johns Hopkins University.



Carmen Ramirez, of Atwater, has been reappointed to the **Central Valley Regional Water Quality Control Board**, where she has served since 2011. Ramirez has been a partner at the Law Offices of Kelsey and Ramirez since 2014. She was an attorney at the Law Offices of Carmen Ramirez from 2011 to 2014. Ramirez held several positions

at Fagalde Albertoni and Flores LLP from 2007 to 2010, including counsel, associate and law clerk, and was a redevelopment associate at the City of Merced Office of Economic Development from 2003 to 2007. Ramirez earned a Juris Doctor degree from the San Joaquin College of Law.



Nancy Wright, of Whitewater, has been reappointed to the **Colorado River Basin Regional Water Quality Control Board**, where she has served since 2012 and served from 2000 to 2007. Wright has been co-owner at Peter Wright General Contractor since 1977. Wright is a member and past president

of the Mission Springs Water District Board of Directors, where she has served since 1988.

Eric Sandel, of Truckee, has been reappointed to the **Lahontan Regional Water Quality Control Board**, where he has served since 1992. Sandel has held several positions at S.A. Engineering since 1978, including principal and engineer. He is a licensed professional engineer.



Charles Stringer, of Los Angeles, has been reappointed to the **Los Angeles Regional Water Quality Control Board**, where he has served since 2010. Stringer has been principal and general counsel at the Renewable Resources Group since 2006. He was founder and owner at the Law Offices of C. M. Stringer from 2001 to 2006 and was senior legal and

policy advisor at the Northwest Indian Fisheries Commission from 1999 to 2001. Stringer was senior assistant tribal attorney for the White Mountain Apache Tribe from 1996 to 1998 and assistant regional counsel at the U.S. Environmental Protection Agency, Region 10 from 1992 to 1996. He was an associate at Short Cressman and Burgess from 1989 to 1992. Stringer earned a Master of Public Administration degree from the Harvard University, Kennedy School of Government and a Juris Doctor degree from the University of Minnesota Law School.



Lawrence Yee, of Ojai, has been reappointed to the **Los Angeles Regional Water Quality Control Board**, where he has served since 2012. He was president and coordinating director at the national Food Commons from 2010 to 2015, a national program leader for food marketing systems innovations at the U.S. Department of Agriculture from 2003 to

2004 and served in several positions at the University of California Cooperative Extension from 1975 to 2008, including director of the University of California Cooperative Extension, Ventura County and director of the University of California Hansen Trust. He earned a Master of Business Administration degree in agribusiness from Santa Clara University.



Gregory Giusti, of Kelseyville, has been reappointed to the **North Coast Regional Water Quality Control Board**, where he has served since 2013. Giusti has been an advisor and director emeritus of forest and wildlands ecology at the University of California Cooperative Extension since 2017, where he was an advisor and director of forest

and wildlands ecology from 1985 to 2017. He was an agricultural biologist at the San Mateo County Department of Agriculture from 1981 to 1985 and chief biologist at the Marine Ecological Institute from 1979 to 1981. He earned a Master of Arts degree in ecology and population biology from San Francisco State University.

ASCE Los Angeles Section Life Members 2018

2018 Life Members	Business Position	Company Name
Charles Aldrich, P.E., M.ASCE	Principal Engineer	Aldrich Geotechnical
Desi Alvarez, P.E., M.ASCE	Consultant	MCM Management Co.
Donald Gene Archer, P.E., M.ASCE		PQM, Inc.
Allen Edward Blodgett, G.E., P.E., M.ASCE	Principal Engineer	AECOM
Frank J. Brandauer, P.E., M.ASCE	VP Regulatory Affairs	Avery Dennison
William R. Brownlie, P.E., M.ASCE	Sr Vice Pres	Tetra Tech Inc.
Samuel Joseph Cammarano, P.E., M.ASCE	Consultant	Sage Associates Inc.
James Arthur Cathcart, P.E., L.S., F.ASCE	Senior Principal	Stantec
Robert Louie Chen, Ph.D., P.E., M.ASCE	Chief Engineer Project Manager	Parsons Brinckerhoff Inc.
Yen-Hsu Chen, P.E., M.ASCE	Principal Project Manager	Tetra Tech Inc.
Steve Paul Chenot, P.E., M.ASCE	Senior Associate	Marx Okubo & Associates Inc.
James Howard Clark, P.E., F.ASCE	Senior Vice President	Black & Veatch
William A. Cook, P.E., M.ASCE		Hill International
Sean G. Corrigan, P.E., F.ASCE	City Engineer/ Public Works Director	
Pamela Gene Cosby Brandman, P.E., M.ASCE	Practitioner	The Brandman Group
Joseph A. Cylwik, M.ASCE	Owner, Wireless Consulting	Wireless Consulting
John Gordon Diehl, P.E., M.ASCE	President	GEOVision Inc.
Robert Bruce Doxsee, P.E., M.ASCE	Civil Engrg Assoc	
Richard Murray Drake, P.E., S.E., M.ASCE	Senior Fellow	Fluor
Joe Chi-Ho Dyer, P.E., M.ASCE	Assistant City Engineer	City of Chino Hills
Robert Clifford Everson, P.E., M.ASCE	Principal Engineer	Fluor Enterprises Inc.
Daniel L. Feger, P.E., M.ASCE	Director of Development Service	Bob Hope Airport
Joseph Stuart Gaugush, P.E., M.ASCE	Retired	
Thomas E. Grant, P.E., M.ASCE		Orange County Sanitation District
Kenneth K. Hatai, P.E., M.ASCE	Senior Tr Engineer	
Michael H. Jones, P.E., M.ASCE	Associate VP	HNTB
Kwang Jin Kim, M.ASCE	Principal Engineer	Comtec Research
Mark Alan Komoto, P.E., M.ASCE	Senior Project Manager	
John Philip Leuer, P.E., M.ASCE	President	LOR Geotechnical Group Inc.
Leonard Irvin Liston, P.E., M.ASCE	President	L C Engineering Group, Inc.
Glen L. Ludwig, P.E., M.ASCE	President	Ludwig Engineering Associate, Inc.
Daniel T. Martinez, P.E., M.ASCE		Pacific Soils Engineering, Inc.
Dante A. Masnada, P.E., L.S., M.ASCE	Retired	Castaic Lake Water Agency
Juergen Milczewsky, P.E., M.ASCE	Principal Engineer	J Milczewsky & Associates
Tomas Enrique Molina, P.E., M.ASCE	Senior Project Manager	
Joel Olmos, P.E., M.ASCE	Engineering Manager	Ameron Water Transmission Group
Jerry L. Phillipps, P.E., M.ASCE	President	Phillipps Specialty Paving
Gary N. Plunkett, P.E., M.ASCE	Senior Construction Manager	Jacobs
Hannes Herbert Richter, P.E., M.ASCE	Principal Geotechnical Engineer	Stoney-Miller Consultants
John F. Rochford, P.E., F.ASCE	President	Snyder Langston
David John Rose, M.ASCE	President	DTR Engineering
Bruce Steven Russell, P.E., M.ASCE		
Douglas J. Sereno, P.E., D.PE, ENV SP, F.ASCE	Retired	
Reza Shahmirzadi, P.E., S.E., M.ASCE	Program Manager	City of Los Angeles
Ramakrishna Reddy Tadi, P.E., M.ASCE	District Permit Engineer	Caltrans
Stephen F. Taylor, P.E., M.ASCE	CEO	
William I. Wilkerson, P.E., M.ASCE	Vice President	AECOM



Cordially Invites You to the
LIFE MEMBER BRUNCH
March 3, 2018

In honor of those members who have advanced to
Life Member status in the society and in recognition of their career achievements.

Keynote Speaker:
ASCE National President-Elect
Robin Kemper P.E., LEED AP, F.SEI, F.ASCE

Members & Guests: \$35.00 per person

Students: \$25.00 (\$20 refunded after event)

Full Table Sponsor: \$350.00

(4 seats for Sponsor & 6 for Honored Life Members/Students)

Half Table Sponsor - \$175.00

(2 seats for Sponsor & 3 for Honored Life Members/Students)

Monterey Hill Steakhouse

3700 W. Ramona Blvd.

Monterey Park, CA 91754

Reception: 11:00 am Brunch: 11:30 am Program: 12:30 pm - 2:00 pm

Lunch: Chicken Chardonnay, Vegetarian available

Reservation must be received by Friday, February 23, 2018.

—RETURN COUPON—

Return coupon and check to:

ASCE Los Angeles Section, 1405 Warner Ave., Ste. B, Tustin, CA 92780

Name (for name tag): _____

Firm: _____ Phone: () _____

Address: _____

City: _____ State: _____ Zip: _____

Guest Name(s) (for name tag): _____

Check is enclosed for \$ _____ for _____ guest(s)/member(s)/table.

of chicken _____ # of vegetarian _____

Register online at www.ascelasection.org.



SAVE THE DATE - MARCH 23, 2018

2018 CA INFRASTRUCTURE SYMPOSIUM & AWARDS DINNE

WWW.CAISRegion9.Org/2018



**San Francisco
War Memorial
& Performing
Arts Center**



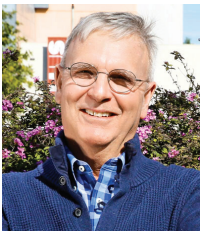
project coordinator.

Valerie Quinto, of Petaluma, has been reappointed to the **North Coast Regional Water Quality Control Board**, where she has served since 2014. Quinto has been executive director at the Sonoma Resource Conservation District since 2017, where she has held several positions since 2008, including program director, conservation project manager and



and senior communications specialist. She held several positions at Cox Communications from 2004 to 2010, including senior communications specialist, communications specialist and public relations coordinator. She earned a Master of Business Administration degree from Chapman University.

Lana Peterson, of Orange, has been reappointed to the **Santa Ana Regional Water Quality Control Board**, where she has served since 2016. Peterson has been director of public affairs at the Kaiser Permanente Downey Medical Center since 2017, where she has held several positions since 2010, including senior public affairs representative



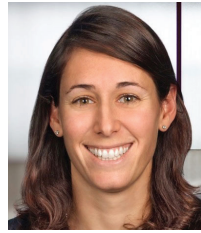
judicial law clerk for the Honorable Manuel L. Real at the U.S. District Court, Central District of California from 1975 to 1976. Selmi earned a Master of Public Administration degree from the Harvard University, Kennedy School of Government and a Juris Doctor degree from the Santa Clara University School of Law.

Daniel Selmi, of Newport Beach, has been reappointed to the **Santa Ana Regional Water Quality Control Board**, where he has served since 2016. Selmi has been a professor of law at Loyola Law School, Los Angeles since 1983. He was a deputy attorney general in the California Department of Justice, Office of the Attorney General from 1976 to 1983 and a



Health, Science and Policy at the University of California, Irvine School of Social Ecology from 1974 to 2006. Olson earned a Doctor of Philosophy degree and a Master of Science degree in environmental health science from the University of California, Berkeley.

Betty Olson, of Trabuco Canyon, has been reappointed to the **San Diego Regional Water Quality Control Board**, where she has served since 2014. Olson has served as a professor in the Department of Civil and Environmental Engineering at the University of California, Irvine School of Engineering since 2006. She was a professor in the Department of Environmental



a Juris Doctor degree from the Emory University School of Law.

Stefanie Warren, of San Diego, has been reappointed to the **San Diego Regional Water Quality Control Board**, where she has served since 2013. Warren has been an attorney at Dentons since 2006. She was a law clerk for the Honorable Irma E. Gonzalez at the U.S. District Court, Southern District of California from 2005 to 2006. Warren earned



from 2011 to 2012, a California Council on Science and Technology policy fellow at the California State Senate Natural Resources and Water Committee from 2010 to 2011 and a research consultant at Berkeley Economic Consulting Inc. from 2007 to 2010. Ajami was a postdoctoral researcher at the University of California, Berkeley from 2005 to 2009. She earned a Doctor of Philosophy degree in civil and environmental engineering from the University of California, Irvine and a Master of Science degree in hydrology and water resources from the University of Arizona.

Newsha Ajami, of San Francisco, has been reappointed to the **San Francisco Bay Regional Water Quality Control Board**, where she has served since 2013. Ajami has been director of urban water policy at Stanford University's Stanford Woods Institute for the Environment since 2012. She was senior research associate at the Pacific Institute



protection specialist for the U.S. Environmental Protection Agency from 1971 to 1976. McGrath earned a Master of Science degree in civil engineering from the University of California, Berkeley.

James McGrath, of Berkeley, has been reappointed to the **San Francisco Bay Regional Water Quality Control Board**, where he has served since 2007. He was manager of the Port of Oakland Environmental Department from 1990 to 2005, a coastal protection analyst at the California Coastal Commission from 1976 to 1990 and an environmental

Joseph Wall, of Sacramento, has been appointed **special assistant for climate change at the California Natural Resources Agency**, where he has served in several positions since 2015 assisting in the development and implementation of the state's strategies for the adaptation to and reduction of impacts associated with climate change, including as an associate governmental program analyst and as a staff services analyst. Wall was an executive fellow at the California Natural Resources Agency from 2014 to 2015.

AES Advanced Earth Sciences, Inc.
Geotechnical and Environmental Consultants

Kris Khilnani, PE, GE - President
Dr. Sujl Somasundaram, PE, GE - Principal Engineer
Grant Miller, PG, CEG - Principal Geologist

(949) 379-2450 FAX: (949) 379-2470
9307 Research Drive Irvine, CA 92618 Website: www.aessciences.com

ADVANCED ENGINEERING SOFTWARE

Software written & supported by the
AUTHORS OF THE COUNTY MANUALS

advancedengineeringsoftware.com
SD: (760) 510-5940, OC: (657) 229-0090

AECOM Innovative & Delivered.

With offices throughout Southern California,
we deliver expert solutions for our clients.

One California Plaza
300 South Grand Avenue
Los Angeles, CA 90071
Tel: (213) 553-1100
aecom.com

amec foster wheeler

- Geotechnical Engineering
- Construction Materials Inspection/Testing
- Construction Management
- Environmental Science and Engineering
- Earthquake-Related Services
- Air Toxics and Health Risk Assessment

James J. Weaver PE, GE
Tel (323) 889-5300 Fax (323) 721-6700

6001 Rickenbacker Rd.
Commerence, California
USA 90040-3031
www.amecfw.com

Cannon
ENGINEERING-PLANNING-CONSTRUCTION

J. Eric Porkert, PE
General Manager and Senior Principal Engineer

Public Infrastructure; Land Development;
Education; Energy; Survey & Mapping;
Aerospace/Defense

310.664.1166
www.CannonCorp.us

For Over 15 Years
CASC has Helped
Agencies get
Through Plan
Checking Log Jams

Drainage Reports SWPPP/WQMP Maps/Logs
Streets Sewer Water Storm Drain

CASC
Engineering and Consulting
www.cascinc.com

CHJ CONSULTANTS IS NOW A TERRACON COMPANY!

CHJ Consultants
A Terracon Company

1355 E. Cooley Drive | Suite C | Colton, CA 92324
(909) 824-7311 | chjconsultants.com

Environmental Facilities Geotechnical Materials

CWE

Civil Engineering
Water Resources
Stormwater Management
Environmental
Construction Management

Certified 8(a), DBE, MBE, SBE

1561 E. Orangethorpe Avenue
Suite 240
Fullerton, CA 92831
Tel (714) 526-7900 Fax (714) 526-7004
info@cweccorp.com

CIVIL WATER ENVIRONMENTAL

DAVID EVANS AND ASSOCIATES, INC.

TRANSPORTATION
WATER RESOURCES
LAND DEVELOPMENT
ENERGY
SURVEYING GEOMATICS
MARINE SERVICES

CALIFORNIA LOCATIONS
Los Angeles | Ontario | San Diego
Santa Clarita | Temecula | Tustin | Victorville

800.721.1916
www.deainc.com

DAVID R. GRAY, INC.
Surveys-Subdivisions-Mapping

David R. Gray
CEO / Principal Land Surveyor

621 Via Alondra, Suite 609
Camarillo, CA 93012

(805) 987-3945
Fax: (805) 987-1655
davidg@grayinc.com

DIAZ-YOURMAN & ASSOCIATES

Christopher M. Diaz, PE, GE
Principal

Geotechnical Services

1616 East 17th Street Santa Ana CA 92705-8509
Tel. (714) 245-2920 • Fax (714) 245-2950 • Cell (714) 412-2093
chris@diazyourman.com www.diazyourman.com

Earth Mechanics, Inc.
Geotechnical & Earthquake Engineering

Foundation Design
Seismic Evaluation
Soil-Structure Interaction
Field Investigation and Laboratory Testing
Grading and Foundation Inspections

www.earthmech.com
San Marcos Fountain Valley Hayward
760.736.8222 714.751.3826 510.562.8833

GENTERRA Consultants, Inc.

Joseph J. Kulikowski, P.E., G.E.
President and Senior Principal Engineer

15375 Barranca Parkway, Building L
Irvine, California 92618
Tel: 949.753.8766 Fax: 949.753.8887
joekul@genterra.com
www.genterra.com

CIVIL ENGINEERING • GEOTECHNICAL ENGINEERING • DAMS AND LEVES
CERTIFIED SMALL BUSINESS ENTERPRISE
SERVICES PROVIDED NATIONWIDE

GeoPentech
Geotechnical & Geoscience Consultants

- Geotechnical Engineering
- Geo-Earthquake Engineering
- Seismic Hazards Evaluation
- Soil Dynamics/Vibrations
- Engineering Geology
- Hydrogeology
- Seismic Geology
- Forensic Studies

Sarkis Tatusian, Principal Geotechnical Engineer
5251 California Avenue, Suite 210
Irvine, California 92617
Phone: (714) 796-9100; Fax: (714) 796-9191
Web Site: www.geopentech.com

GPI
GEOTECHNICAL PROFESSIONALS, INC.

James E. Harris, G.E.
Byron Konstantinidis, G.E.
Paul R. Schede, G.E.

5736 Corporate Ave.
Cypress, California 90630
(714) 220-2211 Fax (714) 220-2122
www.gpi-ca.com

GREGG Phone: (562) 427-6899
Fax: (562) 427-3314
Email: info@greggdrilling.com
Web Site: www.greggdrilling.com

GREGG DRILLING & TESTING, INC.

- ENVIRONMENTAL and GEOTECHNICAL DRILLING
- WELL INSTALLATION
- CONE PENETRATION TESTING

2726 WALNUT AVE. • SIGNAL HILL, CA 90755

GROUP DELTA CONSULTANTS

GEOTECHNICAL ENGINEERING
MATERIALS TESTING & INSPECTION
Serving Southern California since 1986

Michael Reader, G.E.
Principal Engineer
Tom Swantko, G.E.
Principal Engineer

Group Delta Consultants, Inc.
Los Angeles County: (310) 320-5100
Orange County: (949) 609-1020
San Diego County: (858) 524-1500
www.GroupDelta.com

gsi Geotechnical Stabilization, Inc.

Amer R. Al-Alusi, P.E.
President
alusi@gsigrout.com

Chemical Grouting Compaction Grouting
PressGrout Piles Helical Piers

1566 Sterling Court • Escondido, CA 92029-1208
Phone (760) 489-6696 • Fax (760) 489-6697

Hall & Foreman, Inc.

IS NOW **DAVID EVANS AND ASSOCIATES, INC.**

800.721.1916
www.deainc.com
www.hfinc.com

CALIFORNIA LOCATIONS: Los Angeles • Ontario • Sacramento • San Diego
Santa Barbara • Santa Clarita • Temecula • Tustin • Victorville

Ideas transform communities

hdr hdrinc.com

Kiewit

KIEWIT INFRASTRUCTURE WEST CO.
10704 Shoemaker Ave., Santa Fe Springs, CA 90870
(562) 946-1816
www.kiewit.com

K&S KRIEGER & STEWART Engineering Consultants

Water • Wastewater • Recycled Water • Storm Water
Planning • CEQA/NEPA • Surveying
Design • Construction Management • Inspection

Engineering the Details, Because Details Matter
Riverside, CA 92501 • 951.684.6900 office
www.kriegerandstewart.com

KEHOE TESTING & ENGINEERING

- Cone Penetration Testing (CPT)
- Direct Push Soil, Water & Vapor Sampling
- Truck Mounted, Track & Ltd. Access Rigs

Soil Testing & Sampling Services
for Geotechnical & Environmental Consultants

5415 Industrial Drive
Huntington Beach, CA 92649-1518
(714) 901-7270 (714) 901-7289 fax

STEVE KEHOE, P.E.
PRESIDENT

PROFESSIONAL PAVEMENT ENGINEERING
Since 1969 | VSBE | Registered Civil Engineer

Pavement Testing, Analysis and Design
ASHOTO Accredited Laboratory
CALTRANS Certified Technicians
QICQA Testing Services
FWD Pavement Deflection Testing
GPR Pavement Thickness Scanning

LaBelle Marvin
2780 S. Grand Avenue | Santa Ana, CA 92705
email:gmarnin@labellemarvin.com

Geotechnical Environmental Site/Civil

LANGAN

www.langan.com 213.943.1310

Los Angeles Irvine Oakland Sacramento San Francisco San Jose
CA NJ NY CT PA OH DC VA FL TX ND

Leighton Consulting, Inc.

866-LEIGHTON

Thomas C. Benson, Jr., PE, GE | President and CEO

Geotechnical | Environmental | Testing and Inspection

Michael Baker INTERNATIONAL We Make a Difference

Planning/Urban Design • Transportation/Traffic
Land Development • Water Resources • Structures
Survey/Mapping • Public Works • Surface Water

801 S. Grand Avenue, Suite 250, Los Angeles, CA 90071
Anna Lantin, PE, Senior Vice President, (949) 472-3461

mbakerintl.com

MNS ENGINEERS INC.

SERVICES
Civil Engineering
Construction Management
Surveying

MARKETS
Transportation
Water Resources
Federal
Government

BUELLTON • LONG BEACH • PASADENA • SALINAS
SAN JOSE • SAN LUIS OBISPO • SANTA BARBARA • WESTLAKE VILLAGE

NMG
Geotechnical, inc.

Hayim Ninyo
Ted Miyake

17991 Fitch, Irvine, CA 92614
Phone (949) 442-2442 Fax (949) 476-8322
E-Mail: hninyo@nmgeotechnical.com
www.nmgeotechnical.com

PACE
Advanced Water Engineering

...in partnership with nature

- Water / Wastewater
- Manned Lakes / Streams
- Fountains / Pools
- Stormwater Management
- River Engineering
- River / Wetland Restoration

WWW.PACEWATER.COM
HEADQUARTERS
17520 Newhope Street, Suite 200 | Fountain Valley, California 92708
main: 714.481.7300 fax: 714.481.7299
ADDITIONAL LOCATIONS
SCOTTSDALE, AZ • BEIJING, CHINA

PARSONS

100 W. Walnut Street
Pasadena, California 91124
(626) 440-3355 • Cell: (626) 710-0494
Fax: (626) 440-6337
satish.kamath@parsons.com

Satish Kamath, P.E., BCEE
Vice President

www.parsons.com

Port of LONG BEACH
The Green Port

4801 Airport Plaza Drive, Long Beach, CA 90815

PSOMAS

Civil Engineering Land Surveying
Construction Management Environmental Consulting

Balancing the Natural and Built Environment

Project X Corrosion
MBE • DBE • SBE • SBA 8(a)

Soil Testing • Metallurgy Lab
Corrosion Control Consulting
Thermal & Forensic Engineering

Ed Hernandez, PE, NACE CCT
info@projectxcorrosion.com

Phone: 213-928-7213 • ProjectXcorrosion.com

rrm design group

CIVIL ENGINEERS • STRUCTURAL ENGINEERS • SURVEYORS
ARCHITECTS • LANDSCAPE ARCHITECTS • PLANNERS

rrmdesign.com

Stantec

We bring infrastructure projects to life

523 West 6th Street, Suite 1200
Los Angeles, CA 90014
askstantec@stantec.com

Design with community in mind
stantec.com

Civil Engineering • Water Resources • Construction Management
Environmental • Surveying • Program Management • Inspection

TKE ENGINEERING INC.

2305 Chicago Avenue - Riverside - CA - 92507
Ph. (951) 680-0440 • Fax (951) 680-0490
www.tkeengineering.com

www.vacconsultinginc.com

VA CONSULTING

Max Vahid, P.E.
President and CEO
maxvahid@vacconsultinginc.com
Tel: 949.474.1400 | Fax: 949.261.8482

Engineering Services in:
Flood Control | Drainage | Water Quality
Potable Water | Recycled Water | Wastewater
Transportation | Traffic | Plan Checking
Structural | Land Use Planning | Site Development
Surveying | Construction Management

Offices in: Irvine • Corona • Palm Desert

VALUED ENGINEERING, INC.

"Engineering with values and integrity"

CIVIL ENGINEERING • LAND SURVEYING • LAND PLANNING

180 N. Benson Avenue, Suite "A"
Upland, CA 91786
Office: (909) 982-4601
Cell: (909) 927-7347
jeff@valued-eng.com
www.valued-eng.com

Jeff D. Meiter, LS, RCE
President

CALL FOR COMMITTEE MEMBERS

WATER POLICY

Dolores Salgado - dsalgado@iecorporation.com

LEGISLATIVE

Vacant - jburke@ieua.org

INTERNATIONAL

Ayman S. Mosallam - mosallam@uci.edu

DISASTER PREPAREDNESS

Jack Rolston via jburke@ieua.org

ASCE
LOS ANGELES SECTION



Reminder:

Copy deadline for the February 2018 issue is January 1, 2018; copy deadline for the March 2018 issue is February 1, 2018.

National ASCE (800) 548-2723 (ASCE)
Access National ASCE at: www.asce.org
L.A. Section web site at:
www.ascelasection.org

MATERIALS SUBMISSION INFORMATION

All graphic materials submitted for use in the ASCE newsletter should have all fonts outlined, and links included; EPS or PDF files preferred. Other formats are Adobe InDesign or Adobe Illustrator (any version); additional acceptable file formats are JPEG or TIFF files (minimum 300 dpi). Images embedded in Microsoft Word documents should be sent separately, at a minimum resolution of 300 dpi at the display size desired. Collected files, including links and fonts, should be compressed and e-mailed, or sent on CD or Zip disk (provide return address). Business cards can be submitted electronically as well, or send clean, crisp, B&W laser print, unfolded. This publication's size is 8½" x 11".

Los Angeles Section

Monthly: Est. 1913

1405 WARNER AVE.
SUITE B
TUSTIN, CA 92780

POSTMASTER: THIS CONTAINS TIME-SENSITIVE MATERIALS.
PLEASE DELIVER PROMPTLY.



This newsletter is printed on
Forest Stewardship Council
(FSC)-certified paper using
soy-based ink.

**Please contact ASCE Membership at
1-800-548-ASCE for any address changes.**

NEWSLETTER INFORMATION

Publisher

ASCE LA Section
Gayle Stewart
1405 Warner Ave., Suite B
Tustin, CA 92780
Phone (714) 258-8306
Fax (714) 784-7806
E-mail: gstewart@gsecorp.org

Editor

Dr. Cris B. Liban, P.E.
LACMTA
One Gateway Plaza
Mail Stop 99-16-9
Los Angeles, CA 90012
Phone (213) 922-2471
FAX (213) 922-6875
E-mail: cliban@alumni.ucla.edu
Typesetting, Layout & Printing: Apollo Printing & Graphics



Please send all copy to the Editor by
the first of the month preceding publication.

Identification Statement

ASCE Newsletter, (ISSN 0273-6233)
is published monthly by ASCE,
Los Angeles Section, 1405 Warner Ave.
Tustin, California 92780. Subscription price
included in Section dues of \$55.

Circulation

Circulated monthly (except for a joint
July/August issue) to the 5,000 subscribing
members of the Los Angeles Section, ASCE.

NEW Advertising Rates

EMPLOYMENT ADS	DISPLAY ADS
\$100/column inch	1/8 page \$200
	1/4 page \$300
	1/2 page \$465
	1 page \$740

PROFESSIONAL DIRECTORY

\$450 per business card for a full year
(Additional fees may be applied for typesetting.
Please call for information.)

POSITION WANTED ADS

No cost to L.A. Section members.

For more advertising and billing information,
please contact Gayle Stewart at (714) 258-8306
or gstewart@associationplanet.com

National ASCE (800) 548-2723 (ASCE)
Access National ASCE at: www.asce.org
L.A. Section web site at: www.ascelasection.org