

# Los Angeles Section

*Monthly: Est. 1913*

ORANGE / SAN\_BERNARDINO/RIVERSIDE / SAN\_LUIS\_OBISPO / SANTA\_BARBARA/VENTURA / DESERT /  
SOUTHERN SAN\_JOAQUIN / METROPOLITAN LOS ANGELES

## OFFICERS'S MESSAGE

Seema C. Shah-Fairbank, P.E., Ph.D., M.ASCE  
Los Angeles Section President

### President's Message



October marks the beginning of a new fiscal year and I feel honored that you have selected me to represent you as ASCE LA Section President for the 2020-2021 year. I have been actively involved with ASCE over the years as a member, officer and faculty advisor. Working with students and professionals has provided me an insight on all ASCE can offer. Not only have I grown professionally and created a network of peers, but I have made many friends along the way.

For those that know me well, I can be described as someone that wants to make a difference in this world. And that is why, I choose to become a professor of civil engineering at Cal Poly Pomona. I have been teaching since fall of 2009 and would not trade my job for anything in the world. Not only do I get to teach my students about water resources, but I am fortunate to be their mentor and professional coach. I plan to bring that same passion to ASCE LA Section.

During the past year, ASCE LA Section has started a multi-year strategic planning initiative. We have developed and approved a vision, mission, and goals for the section. As your president, I plan to work towards achieving these goals through teamwork, communication, transparency and creativity. But as any leader knows, we are just as strong as the people we are surrounded by; thus, I am excited to introduce the dedicated volunteers that make up the ASCE LA Section Executive Board. New to the Board this year is President-Elect Jeff Braun, Secretary Preston Kamada and VP Technical Groups Lisette A. Bice. Returning Executive Board members include Past President Dan Cronquist, Treasurer Melissa Barbosa, and VP Student Activities Dr. Sudarshan Kurwadkar.

During the year, I hope to leave a mark on ASCE LA Section. Working with the Board of Directors we will continue the strategic planning efforts. We plan to bring together our stakeholders by hosting signature regional virtual workshops. This year we will be hosting two virtual workshops in November and March. These workshops will provide our members with knowledge and skills as they explore professional and personal opportunities. As a Section, we will improve our communication, visibility and marketing through a social media and web presence thank to Sam Potts our new Chair for Strategic Communication. During the past fiscal year we unveiled our new mobile friendly website. We will continue to update and add content that will benefit our members. Finally, we will strengthen our advocacy for public policy to enhance sustainable infrastructure thanks to Jeff Meiter our new Chair for Legislative Activities, and Trina Lai and Tonia Wang our co-Chairs for Sustainability.

Thanks again, for selecting me to represent you during the coming year. Please feel free to reach out to me throughout the year with any event notices, concerns or ideas for improvement, and especially if you are looking to get more involved. ASCE LA Section is always looking for people that want to get involved in the community outside of work. Remember, the next job you find can be thanks to a connection you made through ASCE.

Lastly, thank you for allowing me to serve this year as President. I would like to thank you all of you for your support, including Steven King, Jerry Burke, Yaz Emrani, John Rogers, and Ken Rosenfield. And I would also like to add a special thanks to my home branch. We have the best Section in all ASCE and I have every confidence that it will continue to be so.

VOL. LXI NO. 8

### In This Issue *page*

PRESIDENT'S MESSAGE .....	1
NOMINATIONS.....	2
OUTGOING REGION 9 .....	3-6
SUSTAINABILITY ADVOCACY .....	6-7
LEGISLATIVE UPDATE.....	8-9
ASCE SALARY REPORT .....	9
PROFESSIONAL DIRECTORY.....	10-11



# Nominations Are Open For the Following Position: One (1) Region Governor From the San Diego Section and Society President-Elect

ASCE Region 9 invites nominations for one (1) Region 9 Governor from the San Diego Section for a three-year term beginning October 1, 2021. To be considered for this position, you must be a Society member in Good Standing and have an Address of Record within the Region being represented. It is encouraged that nominees also have prior service as a Branch, Section or Institute officer, member of a Section or Branch committee, or a member of a Society-level Committee with demonstrated leadership skills. This position is subject to election during the annual ASCE election cycle.

To apply for this positions, submit the following documents by the deadline of December 1, 2020, to 1) Yazdan Emrani, P.E., Region 9 Nominating Committee Chair, at [YEmrani@GlendaleCA.gov](mailto:YEmrani@GlendaleCA.gov) and to 2) Patricia Montgomery, Managing Director, Executive and Board Operations, ASCE, at [PMontgomery@ASCE.org](mailto:PMontgomery@ASCE.org):

- A Letter of Intent to apply for this elected office
- Signed Governor Commitment document (contact Yaz Emrani for form)
- Biographical Statement, not to exceed 200 words
- Vision Statement, not to exceed 200 words
- Any endorsements
- Color head shot photograph

Nominees will be requested to attend an interview before the Region 9 Board of Governors in January 2021, at a location (or by virtual means), time and date to be set. For questions or application templates, please contact Yaz Emrani at [yemrani@glendaleca.gov](mailto:yemrani@glendaleca.gov). Separately, nominations are open for the position of Society President-Elect for the 2021-2022 Fiscal Year. Nominations are due as of November 1, 2020. Please contact Patricia A. Montgomery, [pmontgomery@asce.org](mailto:pmontgomery@asce.org), for further information.



## Editorial: A Bold Vision of LA Section

The ASCE LA Section Board of Directors and Officers had been meeting on the Mission, Vision, and Goals of the Los Angeles Section. In this month's newsletter, we provide below the outcome of those discussions. These outcomes are the foundation of our local organization; and will guide the future of the LA Section activities.



LOS ANGELES SECTION

### Vision Statement

*Promote and facilitate collaboration between Practicing civil engineering leaders and civil society to enhance the quality of life for all citizens*

### Mission Statement

*Provides leadership and value to assist our members in enhancing their career skills by advancing technology, advocating lifelong learning, and promoting the civil engineering profession for protection of public health and safety and overall welfare*

### Strategic Goals

- Lead regional events, which bring together our stakeholders (Branch, YMF, LMF, Technical Groups and Institutes)
- Improve communication, visibility and marketing
- Collaborate with the diverse civil engineering community
- Provide training to our members
- Provide leadership opportunities to our members
- Recognize and promote new technology and cutting edge advances in the profession. (i.e. Engineering Excellence Awards)
- Advocate for public policy to enhance sustainable infrastructure
- Engage civil engineering professionals to become members of ASCE



[www.ascelasection.org](http://www.ascelasection.org)

# Outgoing Region 9 Director's Message

by Kwame A. Agyare, P.E., ENV SP, M. ASCE, Outgoing ASCE Region 9 Director, and Chair, ASCE Region 9 Board of Governors



The October 28th American Society of Civil Engineers (ASCE) 2020 Annual Convention will mark the end of my term as your Region 9 Director, and Chair of the Region 9 Board of Governors. This will also represent the conclusion of my seven years on the Region 9 Board of Governors: four years as a Region Governor, and three years as Chair of the Board. October 28th will thus mark the conclusion of my extensive volunteer service with ASCE so far. Spanning more

than 25 years, my volunteering with ASCE began as an ASCE student member at the University of Arizona, and continued with activities to help form the Southern Arizona Branch Younger Member Forum, and subsequently with service as the Phoenix Branch President, while also serving as the Chair of several important ASCE Society-level committees including the Committee on Younger Members, and the Committee on Leadership and Management. It has been a tremendous pleasure most recently however, serving members in the State of California and the four Region 9 Sections: Sacramento, San Diego, San Francisco, and Los Angeles, as your representative on the Society's Board of Direction. I had no idea when my volunteer service began those many years ago that I would eventually serve ASCE at this high level.

I would like to sincerely thank all the current Region 9 Governors, Committee Chairs, Committee Members and the volunteer leaders of the Sections, Branches, Younger Member Groups and local Institutes for their hard work and support of ASCE. You have all greatly contributed to making my term on the Region 9 Board such a pleasant experience over the past total seven years, and the past three years as Society Director. I believe Region 9 has accomplished so much during that time in support of the Society's strategic initiatives, all due in huge part to the fantastic volunteer officers that serve this Society.

## Serving on the ASCE Board of Direction

The past three years serving on the ASCE Board of Direction have been a rewarding experience that has been a highlight of my civil engineering career. Despite the tremendous workload of having to be on travel almost 40 to 50 days out of the year, having to attend four in-person Society Board meetings each year and participate on several task and standing committee, and seeking to accomplish all the necessary work to address and resolve some of the most critical issues facing civil engineers, it has been a great pleasure serving with the other 9 Region directors, 3 technical directors, 2 at-large directors, and the 3 presidential officers on the Society Board. I would like to think that both my career expertise and my volunteer experience provided good input towards many of the key decisions that the Society Board addressed during the 2017-2020 period, and helped in generating outcomes that would benefit the majority of ASCE members and the profession as a whole.

The mission of the Region 9 Board of Governors is almost fully intertwined with the ASCE Society Strategic Plan, and my primary role as Chair of the Region 9 Board was to help steer that board towards activities that assisted the Society Board achieve its strategic planning goals. As you may be aware, in October 2018, the Society Board of Direction approved a new Strategic Plan for the Society. This new plan can be found here: [https://www.asce.org/uploadedFiles/About\\_ASCE/Content\\_Pieces/ASCE\\_Strategic\\_Plan\\_online\\_FINAL.pdf](https://www.asce.org/uploadedFiles/About_ASCE/Content_Pieces/ASCE_Strategic_Plan_online_FINAL.pdf), adopted 6 new strategic goals that would replace the former 3 ASCE strategic initiatives which were Sustainable Infrastructure, the Grand Challenge, and Raise the Bar. These 6 new goals can be summarized as:

- Engage Participation by both Members and non-Members in ASCE
- Encourage Innovation and State-of-the-Art Practices
- Promote Safe, Resilient, and Sustainable Infrastructure
- Advance Educational and Professional Standards
- Promote Public Awareness of the Value of Civil Engineers
- Excel in Strategic and Operational Effectiveness

The activities of the Region 9 Board towards this effort are summarized in this Infographic, <http://ascecareportcard.org/wp-content/uploads/2020/09/Region-9-Infographic.pdf>, which is a snapshot of all the activities that Region 9 Board coordinates during a typical year. These activities and accomplishments are summarized below:

- California Infrastructure Symposium - In any typical year, one of the flagship events organized by the Region 9 Board in conjunction with one of the four California ASCE Sections (Los Angeles, Sacramento, San Diego and San Francisco), is the Annual California Infrastructure Symposium, <https://caisregion9.org/>. The event rotates each year between these four Sections. The symposium is currently in its 14th year and was moved to a virtual event this year due to the disruption of all in-person events by the Coronavirus pandemic. The event typically reaches 300 members, and involves speakers from many agencies, consulting firms, and often prominent local and state officials. Key ASCE volunteer officers, including either the current or incoming Society President, typically attend and participate in this event as well. This year's Region 9 collaboration was with the Sacramento Section, and was successfully held on September 25th, 2020 virtually. I would sincerely like to thank all of the four ASCE California Sections for their historic and ongoing collaboration with the Region 9 Board in this event, and for their stellar efforts in coordinating venues, programming, and other logistics towards the continued success of this worthwhile event that has experienced successively increasing attendance and revenue growth during my seven-year tenure on the Region 9 Board.

- Region 9 Annual Awards Recognition Program – Held in conjunction with the California Infrastructure Symposium each year, the Region 9 Awards Recognition program serves to highlight the impressive work that civil engineers carry out during the year, both on an individual and project level, and also seeks to encourage civil engineers to



recognize their peers for the great engineering work that they do on a daily basis. Having served as the Region 9 Awards Committee Chair for several years, I have had personal witness to the innovation, dedication, and pride that California civil engineers bring to their work, and it has been a passion of mine to help encourage ASCE members to seek to present their work for consideration for a Region 9 award. During my tenure of the Board, Region 9 sought to automate the entire awards selection process, from the Branch level through to the Region level, thereby making the awards submittal and evaluation process smoother. I would like to recognize the Orange County Branch, Los Angeles Section, and private contractor JubJub, Inc., for helping to facilitate the technology that made this possible. But my biggest thanks would go to Matthew Kennedy of GHD, the Awards Committee Chair who succeed me, for facilitating the full automation of this process between the Region and the Sections. I would also like to congratulate all the 2019 Region 9 individual and project awards winners who were recognized at a ceremony held virtually on September 24, 2020. <http://asceregion9awards.org/>

- Region 9 2018 California's Surface Transportation Report Card - Every 4 to 6 years or so, the Region 9 Board seeks to update its Report Card for California's Infrastructure, to provide the public with a plain language assessment of the state of infrastructure and infrastructure funding within the Region. In 2018, ASCE played an increased role in the California infrastructure policy debate when we issued the California Surface Transportation Report Card just prior to the November 2018 elections. The report card was released at two simultaneous events in Los Angeles and in Berkeley <http://ascecareportcard.org/event-photos/>. As Region Chair, I also authored the opposing view on a ballot measure that would have defunded previously authorized laws regarding increasing transportation funding in California. The Region 9 Board unanimously agreed that it was important that these funds be maintained, a position that was consistent with ASCE Public Policy statements. A summary of the report card can be found at <http://ascecareportcard.org/wp-content/uploads/2019/02/2018-California-Surface-Transportation-Report-Card.pdf>

- Region 9 Statewide Infrastructure Report Card - In 2019, ASCE Region 9 updated its statewide Report Card for California's Infrastructure, and upgraded the report from the previous 2012 version that comprised 8 categories of infrastructure, to encompass an evaluation of 17 different categories of infrastructure. This report card is typically issued by ASCE Region 9 every 4 to 6 years. The 2019 effort was a monumental task that required recruiting close to 100 volunteers from ASCE members in California, many who responded and agreed to participate in the process by the call to action put out by the conference co-Chairs in newsletters and emails, or from receiving a personal direct phone call. I am personally grateful to all these volunteers who stepped forward to apply their expertise towards evaluating all the required infrastructure categories. I would however reserve my greatest thanks to the two co-Chairs of the effort, Tony Akel of Akel Engineering, Inc., and John Hogan, of DEA, Inc., both former Region 9 Governors, who led and steered this task from inception to conclusion, with great expertise. Thank you,

Tony and John, and also many thanks to the Report Card steering committee as well! The Region is grateful also to all the volunteer leaders who participated in the effort. The report card website can be found at <http://ascecareportcard.org/>, and the report card summary brochure can be found at <https://www.infrastructurereportcard.org/state-item/california/>.

- Combined Report Card Release & Region 9 Legislative Day - The aforementioned 2019 Report Card for California's Infrastructure was released during the annual Region 9 Government Relations Legislative Day visit to the State Capitol, in May 2019. ASCE 2020 President K.N. Gunalan was on hand to deliver remarks prior to the release of the report card. ASCE Region 9 continues to have one of the most active legislative advocacy programs in ASCE, and this event brought together many ASCE members to witness the unveiling of the report card, and to subsequently deliver copies of the report card to every single legislators office at the Capitol. This event was also held in conjunction with the annual Infrastructure Week events that occur nationwide each year, and that Region 9 seeks to be a participant in. The Region 9 Government Relations committee also seeks to annually participate with other engineering entities in California in celebrating Engineers Week every February. In 2020, a group of women engineers from the ASCE Sacramento Section and CSU Sacramento met at the State Capitol with State Assembly Member Rivas for the introduction of two Assembly Concurrent Resolutions to commemorate both Engineers Week and also Introduce a Girl to Engineering Day that occurred on February 20. I continue to applaud our California ASCE members advocacy efforts on legislation and in government relations, which I believe continues to positively impact issues surrounding infrastructure and the civil engineering profession. I strongly encourage all the ASCE groups at the local level who are engaged in such advocacy to continue their efforts, as it does make a positive difference!

- Region 9 Transportation & Development Committee - The Region also has a very active Transportation Committee that follows pending legislation that impacts the State's transportation infrastructure. In addition to participating in the Legislative Day Fly-In, the Transportation Committee annually holds another visit to state legislators and representatives of state committees directly involved in transportation issues. The committee also provides significant input into the speaker schedule for the California Infrastructure Symposium. Many thanks to the various chairs of that committee, David Schwegel, Steven King, and Tapas Dutta for all your hard work in steering the efforts of this committee these past three years.

- Region 9 Water & Environment Committee - The Region 9 Water Committee, chaired by Xavier Irias, follows pending legislation impacting the state's water resources and the environment. In addition to participating in the Legislative Day Fly-In, the Water Committee also annually holds another visit to state legislators and representatives of state committees directly involved in water issues. I appreciate all the hard work of that committee through the years, and a special call out to ASCE members Elizabeth Bialek, Mark Norton, and Darren Mack for your leadership.

• Region 9 Sustainability Committee – This committee focuses on activities to promote inclusion of all the tenets of sustainability in all civil engineering projects. As long-time Chair of the Region 9 Sustainability Committee, Mark Norton has sought to continuously develop this active committee which includes representatives of all four Sections. The Committee promotes the concept of sustainability and the new sustainability rating system, Envision Version 3, for civil engineering projects to our members, legislators, and the public at large. The Committee also encourages members to obtain their Envision® Sustainability Professional (ENV SP) credential and seeks annually to host a workshop to provide the training for this certification. In November 2019, Mark successfully chaired the International Conference on Sustainable Infrastructure which was held in Region 9 in Los Angeles. By all accounts, this event was a resounding success and was very well attended by participants from all over the world! My many thanks to Mark, and all the committee members, for their stellar work.

• Region 9 Disaster Preparedness Committee - Chaired by Region 9 member Doug Taylor, this committee primarily seeks to train ASCE California members to be prepared to respond to calls from the State of California during the disaster response phase of natural and man-made disasters. Several hundred ASCE members have been training in the California Office of Emergency Services (CalOES) Safety Assessment Program (SAP) protocols, and this came into good use in November 2018 when about two dozen ASCE members assisted building officials from the Town of Paradise to perform rapid inspections to approximately 15,000 homes and commercial properties following the Camp Fire. I delivered a presentation on this stellar response by ASCE volunteers at the 2019 ASCE Annual Conference in Miami last year, and it was well attended and very well received by all participants. My many thanks to Doug and the committee for all your work.

• Region 9 History and Heritage Committee - Chaired by Chuck Spinks (former Region 9 Director), the committee seeks to recognize and promote awareness of the great civil engineering projects within the state of California. In 2019, the committee partnered with the ASCE History and Heritage Committee last year to jointly host a celebration commemorating the 150th anniversary of the completion of the first transcontinental railroad in a ceremony in Sacramento. This symposium included sessions on the construction of the railroad and included a tour of some historic rail cars. Chuck and the committee continue to coordinate with the Sections and Branches on identifying worthy historic projects deserving of recognition, which helps to let the public know about the significant civil engineering projects that improve their quality of life. Kudos to this committee!

• Region 9 California PE Board (BPELSG) Committee – Region 9 continues to maintain a committee that endeavors to send a representative to every Board of Professional Engineers, Land Surveyors, and Geologists Board meeting to show ASCE's support of the board and to remain current on actions affecting professional Civil Engineers. In August 2020, California Governor Gavin Newsom appointed outgoing Region 9 Governor Rossana D'Antonio to

the BPELSG board, and ASCE Region 9 is thrilled to have such representation on this important committee. Congratulations Rossana, on your appointment!

• Region 9 Younger Member Forum Committee – Following on from the stellar work accomplished by previous Chair Gidti Ludesirishoti, current YMF Committee Chair Guy Hopes has worked to create a viable and energetic committee that has sought to keep the Region 9 Board informed of the various activities of the younger member forums, thus allowing the Region 9 Board to be proactive in supporting their activities. The committee is currently in the process of transforming their operations into a Younger Member Advisory Council framework that will mirror similar operations in other Regions. I wish to express my many thanks to Guy and all the Section YMF representatives on this committee for your participation.

• Region 9 Monthly Newsletter Articles – Region 9 continues to provide each of the four ASCE California Sections with over 20 newsletter articles each year, for publication in their own Section newsletters. The Region 9 Board continues to believe that this collaboration is an effective way of communicating ASCE and civil engineering matters to ASCE's California members.

• Region 9 Board Student Conference Participation – There are 21 ASCE Student Chapters within California, and students in these chapters belong either to the Pacific Southwest Student Council or the Mid-Pacific Student Council. In most years, either one (or both) of these Student Councils hosts their student conferences in California. The Region 9 Board continues to provide direct support to these student conferences either by helping to solicit sponsorships for the events or in seeking judges to help judge their student competitions. Last year, I attended both student conference events, held at Cal Poly SLO and San Jose State University, and also served a judge in the ASCE National Concrete Canoe Competition held in Melbourne, Florida, where Region 9 made a good showing. The Region 9 Board will continue to support all the ASCE Student Chapters to facilitate student transition into full ASCE membership upon graduation.

• Region 9 Social Media Channels – In addition to maintaining several Region websites to improve the dissemination of information to Region 9 members, the Region 9 Board administers several social media channels with the help of the chair of the Region 9 Committee on Communications with Sections and Branches, Elizabeth Ruedas. These include our Facebook Account, <https://www.facebook.com/ASCERegion9>, our Twitter Account, <https://twitter.com/asceregion9>, and our Instagram account, <https://www.instagram.com/asce-region9/>. These channels allow the Region 9 Board to better connect better with all ASCE California members, but especially with younger members and students.

• Region 9 Board Multi-Regional Leadership Conference Participation – Region 9 Governors participate each year in the Multi-Regional Leadership Conferences which are typically held at the beginning of the year. This year's MRLC was held in San Francisco and was attended by a record number of California ASCE members. Over 550

members from Regions 8 and 9 participated in the event in which Region 9 Governors assisted the effort by moderating sessions and by participating in breakout groups and networking events.

Beginning on October 28th, 2020, Kenneth Rosenfield, the current Vice Chair for Region 9, will become the Director of Region 9 and will serve on the Society Board of Direction. I have the greatest confidence that he will continue the great work being done by our committees and members and will move our Region forward in providing benefits to our members.

Also, I could not have been successful in my role as Chair of the Region 9 Board of Governors without the support of Region 9 Administrator Anne Ettley, and Region 9 Legislative Advocate, Richard Markuson of the Pacific Advocacy Group. My sincere thanks

to both of you for your excellent assistance to me and the Region 9 Board of Governors.

Lastly, I would like to thank all the Region 9 Governors I have worked with during my tenure as Region 9 Director. It has been a pleasure collaborating with all of you during these past three years.

I have no definitive plans for my future involvement in ASCE, but I know that I will continue to support our organization in any way. Civil engineers must continue to exhibit bold leadership during uncertain times, and I urge all of you to do your part to help build a better quality of life for your fellow citizens. If you have any questions or comments please feel free to contact me at: agyare.kwame@gmail.com or my cell phone at (602) 481-8663.

## ARTICLE

## Sustainability Advocacy in these COVID Times

*by Mark R. Norton, P.E., LEED AP, ENV SP, Chair, ASCE Region 9 Sustainability Committee*



My, what a year, 2020, has been! Who would have expected that the tides of public attention to sustainability, resilience and climate change response would be so subsumed by such an all-encompassing concern as the COVID-19 virus as well as sweeping social justice concerns across the world. It was only about a year ago, we were celebrating the 2019 International Conference on Sustainable Infrastructure (ICSI) in Los Angeles. The event was intended to

really ramp up our efforts to build new coalitions, develop stronger messaging and expand implementation of sustainability practices by designers, architects, engineers, managers, contractors, suppliers, and policy makers everywhere. We sought to accomplish this by designing a program of dynamic speakers and leaders, a focused pre-conference summit with industry and public agency leaders and a unique interaction program called "Let's Connect...in LA" bringing engineers, technical experts, policy makers, academia, developers, infrastructure investors, asset managers, philanthropy, social impact investors, and the insurance industry together to explore new business opportunities. Overall, the planned events went very well combined with the conference sponsorship funding which went far to support the ASCE Foundation which far exceeded our expectations and goals. For those who attended the conference last November, everyone considered it a great success. It was a tremendous pleasure serving as chair of this event.

As I reflect on that event and our keynote speaker, Dr. Jared Diamond, UCLA Professor, and Pulitzer Prize author of *Guns, Germs and Steel* and the internationally recognized book *Collapse: How Societies*

Choose to Fail or Succeed, talk, I believe it could not have been more appropriate in addressing our conference theme but also to the challenges that we face today. In his talk, he cited examples in the past in which science and industry have banded together to deal with world-wide challenges. For example, he described the challenge that our planet faced when a hole in the earth's ozone layer was discovered by scientists in 1985. The hole was growing because of the unchecked use of chlorofluorocarbons, or CFCs. Collective and immediate action by all nations to deal with this severe environmental problem became clear. Soon after, the Montreal Protocol which banned the use of CFCs was signed and came into effect in 1989. Within two and half decades, scientific evidence showed that the ozone hole was beginning to close and we have effectively reversed course from a potential doomsday scenario. Another example Dr. Diamond described was the worldwide effort to eradicate polio from the planet. Due to the joint efforts of the Global Polio Eradication Initiative led by national governments, World Health Organization, US Centers for Disease Control and Prevention (CDC), UNICEF and the Bill & Melinda Gates Foundation, we have seen a decline in polio by 99% between 1988 and 2013 with four regions of the world certified as polio free—the Americas, Europe, South East Asia and the Western Pacific.

Dr. Diamond's talk was referencing the need for a worldwide response to climate change at the time of the conference, but today, the COVID-19 virus is our clear and present danger which we must first overcome. Progress is being made across the globe and one day a vaccine will be developed and administered to the populace. Will life ever return to normal? Probably a new normal. Phrases that we once used and still use in adapting to the changing climate seem even more applicable as we see the world around us change forever.

So how is our progress towards world sustainability going despite the current viral crisis? As many of you probably have experienced, our work lives have changed with many still working remotely full time or part time. The face-to-face luncheons, conferences and summits have been replaced by Zoom or MS Teams virtual events. For some this has been a tremendous annoyance and set back but for others, with perhaps a more optimistic view, we may be entering a new business normal where face-to-face interaction will occur more often by computer interactions. I remember as a kid visiting the Bell Lab Picturephone exhibit at Disneyland and so looked forward to the day that we could see the other party on the phone by viewscreen. Developed in 1970, the ability to interact face-to-face by computer never really took off until now. Today it seems like second nature as we adapt to social distancing and virtual meetings.

Despite the hinderances, the cause of sustainability and resilience preparation continues and remains strong. Virtual meetings have had the unintended benefit of reducing our carbon footprint as less automobile transit occurs. The impacts of reducing the number of concentrated human gatherings may also have a positive impact on the environment and still need to be studied. Statewide, local Section and Branch sustainability committees are adapting now to virtual meetings and in some cases increasing the number of online participants compared to past conference calls. Many ASCE YMF's who participate in these calls are also interested in knowing what more can be done to ensure social justice issues are being addressed. In August, the ASCE Los Angeles Section Sustainability Committee held a virtual event to share The Living Future Los Angeles (LFLA) Strategic Plan, a strategic 5-year plan to create a socially just, culturally rich, and ecologically restorative future for Los Angeles including equitable housing, zero-carbon buildings other equity programs. Awareness is increasing that the needs of disadvantaged and economically distressed must be a part of any sustainability solution.

The Institute of Sustainable Infrastructure (ISI) is also still growing in membership and becoming less dependent on its original sponsoring organizations for support. To address an expanding membership in Canada, ISI, announced the French translation of the Envision v3 Guidance Manual will be this fall. To expand support for Envision and its new ongoing credential maintenance requirements, ISI is now offering free webinars reflecting Sustainability Educational Opportunities that qualify for Envision Credential Maintenance every two to three months. Meanwhile, our local sustainability leaders here in CA are still make great strides. Recently, the Engineering News Record awarded its 2020 Award of Excellence to LA Metro's Chief Sustainability Officer, Dr. Cris Liban, who is always thinking of new ways to advance the cause of sustainability throughout the world. Cris Liban, who also serves as ASCE Committee on Sustainability Chair, along with other ICSI Steering Committee members worked to establish a new partnership with the Global Covenant of Mayors for Climate and Energy as part of the International Coalition for Sustainable Infrastructure. The collaboration, announced in December 2019 at the U.N. Climate Change Conference COP 25, aims to advance practical solutions to adapt infrastructure to a changing climate, close the resilience investment gap and break down barriers to action across the globe.

As the ASCE Region 9 Sustainability Committee Chair, I also want to send a shout out to all those who are speaking up for a better world that is sustainable, resilient and safe. These worldwide goals are shared by so many ASCE members and non-ASCE members across the State of California who are working to promote and support sustainability in their profession and society. If you would like to be involved and want to learn more about what ASCE is doing, sustainability committee events in your area or Envision certification, feel free to contact me, Mark Norton, Chair, ASCE Region 9 Sustainability Committee, at [mnorton@sawpa.org](mailto:mnorton@sawpa.org).





# State Investments and Legislative Update

by Richard Markuson, CA Region 9 Legislative Advocate



Recently, Gov. Gavin Newsom unveiled California's second attempt at a comprehensive plan to reopen. Gone is the county "monitoring list" system, which has been criticized as confusing and fragmented. In its place is a framework that sorts each of the state's 58 counties into a tier, which will determine how much businesses are restricted.

August also saw the end of the strangest Legislative session in my more than 30 years of advocacy. We saw the Legislature approve a broad authority for Coronavirus response in March – and then go on recess through July. Then, despite Leadership directives that the remaining focus be on Coronavirus, homelessness, and disaster response, we witnessed hours of floor debate on a variety of issues that didn't fit into any of those three areas.

**Legislation.** Update on bills that went to Governor (or died).

AB 310 (Santiago D-Los Angeles) would have established the Infrastructure and Economic Development Bank Commission. DEAD.

AB 2285 (Committee on Transportation) Transportation. Makes various non-controversial changes to transportation-related statutes. ENROLLED

AB 2560 (Quirk D-Hayward) Requires the State Water Resources Control Board to post on its internet website and distribute through e-mail that it has initiated the development of a Notification Level (NL) or Response Level (RL) for a contaminant and the draft NL or RL along with supporting documentation. ENROLLED

AB 2800 (Quirk D-Hayward) Eliminates the sunset on the Climate-Safe Infrastructure Working Group. Senate Natural Resources and Wildlife Committee. ENROLLED ASCE position: **Support**

AB 2932 (O'Donnell D-Long Beach) Allows the City of Long Beach to use the design-build contracting process to award contracts for curb ramps that are compliant with the Americans with Disabilities Act. ENROLLED.

AB 3005 (Rivas, Robert D-Hollister) Expedites permitting and contracting requirements in order to facilitate the replacement of the Leroy Anderson Dam and Reservoir (Anderson Dam). ENROLLED

SB 414 (Caballero D- Salinas) would have created the Small System Water Authority Act of 2019 and state legislative findings and declarations relating to authorizing the creation of small system water authorities that will have powers to absorb, improve, and competently operate noncompliant public water systems. DEAD

SB 559 (Hurtado D-Sanger) requires DWR to report to the Legislature, no later than March 31, 2021, on federal funding approved by the United States Congress in its 2021 Congressional Budget Resolution

and related appropriations bills or otherwise provided to the Friant Water Authority or other government agency to restore the capacity of the Friant-Kern Canal. ENROLLED

SB 758 (Portantino-La Cañada Flintridge) would have extended the deadline for hospital buildings to be brought into substantial compliance with seismic standards until January 1, 2032, and require the office to revise its regulations to reflect the revision of the deadline as emergency regulations. DEAD

## CEQA Exemptions

SB 55 (Jackson D-Santa Barbara) until January 1, 2025, would exempt from the requirements of CEQA emergency shelters or supportive housing projects meeting certain requirements. ENROLLED

SB 288 (Wiener D-San Francisco) would provide a CEQA exemption to sustainable transportation projects — public transportation, bike safety, and pedestrian projects. ENROLLED

SB 757 (Allen- Santa Monica) establish specified procedures for the administrative and judicial review of the environmental review and approvals granted for the Twenty-Eight by '28 Initiative pillar projects located in the County of Los Angeles. ENROLLED

SB 974 (Hurtado D-Sanger) Exempts from CEQA projects that primarily benefit a small disadvantaged community water system by improving the water system's water quality, water supply, or water supply reliability; by encouraging water conservation; or by providing drinking water service to existing residences within a disadvantaged community where there is evidence of contaminated or depleted drinking water wells. ENROLLED

SB 995 (Atkins D-San Diego) Extends for four years the Jobs and Economic Improvement Through Environmental Leadership Act of 2011 (AB 900) until 2025; and makes housing projects that meet certain requirements, including specified affordable housing requirements, eligible for certification under the Act. DEAD

## New Reports of Interest

The Legislative Analyst's Office released "Improving California's Response to the Environmental and Safety Hazards Caused by Abandoned Mines," it finds that cost of remediating "an estimated 47,000 abandoned mines" in California "is likely to be in the billions of dollars," while funds are "limited" and "spread across multiple agencies," recommends legislature create a single state agency responsible for prioritizing cleanup projects and a new funding stream that "could be supported by state and federal dollars."

The AB 1755 Partner Agency team, led by the Department of Water Resources, released an updated AB 1755 Implementation Journal, which details the "implementation strategy and accomplishments to date" for AB 1755, the Open and Transparent Water Data Act, which was signed into law in 2016 and allowed for the creation of a statewide integrated water data platform that would integrate



existing water and ecological data information. Its most recent update includes “numerous links to water and ecological data resources,” including a user interface survey that “seeks input to help ongoing implementation efforts.”

The Legislative Analyst’s Office released “What Threat Does Sea-Level Rise Pose to California?” it found “Climate scientists have developed a consensus that one of the effects of a warming planet is that global sea levels will rise,” forecasts “between \$8 billion and \$10 billions of existing property in California is likely to be underwater by 2050, with an additional \$6 billion to \$10 billion at risk during high tides,” also says, “higher ocean water levels could force up the water levels underneath the ground as well, leading to flooding, saltwater intrusion into fresh groundwater supplies and toxic contamination by carrying hazardous materials to the surface.”

The Public Policy Institute of California has released its report, “Making the Most of Water for the Environment: A Functional Flows Approach for California’s Rivers,” recommends making policy decisions that follow “components of a river’s flow that sustain the biological, chemical, and physical processes upon which native freshwater species depend,” without mandating “restoration of natural flows or the maintenance of historical ecosystem conditions,” but rather

focusing on “preserving key functions — such as sediment movement, water quality maintenance, and environmental cues for species migration and reproduction — that maintain ecosystem health.”

### Appointments of Interest

By Governor:

To the California Transportation Commission: **Michele Martinez**, 40, Santa Ana, Democrat, founder and consultant at Emergent P4 Advisors since 2020.

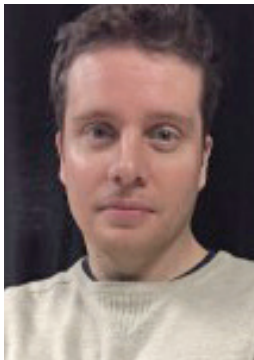
To the California High-Speed Rail Authority Board of Directors: **Nancy Miller**, Sacramento, partner at Renne Sloan Holtzman Sakai LLP since 2015; **Lynn Schenk** (reappointed), San Diego, lawyer in private practice and chief of staff to Gov. Gray Davis from 1999 to 2004; **Anthony Williams**, Orange, legislative affairs secretary in the Office of Gov. Gavin Newsom since 2019.

To the Board of Professional Engineers, Land Surveyors, and Geologists: **Rossana D’Antonio**, Malibu, deputy director at the Los Angeles County Public Works Dept. since 2016.

## ARTICLE

# ASCE Salary Report Reveals ‘Strong’ Profession, Positive Trends

by Ben Walpole



The [ASCE 2020 Civil Engineering Salary Report](#) shows an industry with fundamentals that continue trending in the right direction.

The median pre-tax annual salary in 2019 among survey respondents was \$115,000, up from \$109,000 last year, continuing a half-decade-long trend of increasing compensation for civil engineers.

“This survey highlights the fact that prior to the pandemic, our profession was strong,” said ASCE President K.N. Gunalan, Ph.D., P.E., D.GE, F.ASCE. “While the COVID-19 pandemic has indeed rocked the industry and every sector of the economy, the critical work of civil engineers has not stopped – keeping water and wastewater systems functioning; transportation systems including roads, bridges, ports, and airports delivering goods and services to our door steps; and electricity and telecommunications systems keeping us connected to the outside world as we have managed our day-to-day life and business in a largely virtual world.”

The salary report data is culled from responses of ASCE members about their jobs and financial compensation. This year, the typical respondent was a male in his early to mid-40s, with a bachelor’s or advanced degree and about 19 years of professional experience.

The typical median entry-level salary, according to the report, was \$64,000.

The data also points to the importance of professional licensure and advanced education. Consider that the median salary for civil engineers with a professional engineer license was \$121,000, or \$31,000 higher than the median for civil engineers without any professional licenses or certifications.

In addition, the median annual salary for survey respondents who had Master of Arts or Master of Science degrees was nearly \$14,000 more than that of respondents whose highest level of education attained was a Bachelor of Arts or Bachelor of Science degree.

The COVID-19 pandemic has significantly altered the industry in 2020, but the larger trends seen in the salary report would seem to portend a brighter future.

“If anything, the pandemic has shown that our work is essential to maintaining public health, safety, and quality of life,” Gunalan said. “While the timing may be uncertain, we are looking forward to a future where the industry continues the positive trends we’ve seen of increased demand for the skills and expertise that civil engineers possess.”

# ASCE LA Section Presents

## *Virtual Night at the Civil Engineering Oscars*

### 2020 Officer Installation & Awards Banquet

THURSDAY ♦ OCTOBER 22 ♦ 6:00 PM—8:00 PM

### Celebrate Project and Individual Achievements

Desert Area Branch (Mono and Inyo Counties)

Metropolitan Los Angeles Branch

Orange County Branch

San Bernardino-Riverside Branch

San Luis Obispo Branch

Santa Barbara-Ventura Branch

Southern San Joaquin Branch (Kern County)



<https://tiny.cc/2w1psz>

**Become an Event Sponsor and Register for the Event!**

Complementary Ticket for Awardees, ASCE Members and Guest

Questions can be directed :

Gayle Stewart at [gstewart@gsecorp.org](mailto:gstewart@gsecorp.org) or Mimi Luk [mluk@gsecorp.org](mailto:mluk@gsecorp.org)

Benefit	Title Sponsor	Platinum Sponsor	Gold Sponsor	Silver Sponsor	Bronze Sponsor
	\$5000	\$3000	\$1500	\$750	\$500
Logo and Company Name in Digital Program	X	X	X	X	X
Logo on display at Event	X	X	X	X	X
Acknowledgement during Event	X	X	X	X	X
Logo on display on Website	X	X	X	X	X
Newsletter Publicity					
• December Issue – Name Listed	X	X	X	X	X
• ½ Page Ad for 2021 calendar year (\$5115 value)	X				
• Business Card Ad for 2021 calendar year (\$450 value)	X	X	X	X	
• ½ Page Ad Space (\$465 value)		X			
• ¼ Page Ad Space (\$300 value)			X		

**SIGN ME UP!** I want to support ASCE LA Section by sponsoring the Annual Officers Installation and Awards Celebration and take advantage of the promotional opportunities afforded to me as a selected sponsor (check one).

Title Sponsor \_\_\_\_ Platinum \_\_\_\_ Gold \_\_\_\_ Silver \_\_\_\_ Bronze \_\_\_\_

Company Name: \_\_\_\_\_

Contact Name: \_\_\_\_\_

Phone: \_\_\_\_\_ Fax: \_\_\_\_\_

Email: \_\_\_\_\_

PLEASE return form and check payable to:

ASCE LA Section, 1405 Warner Ave., Ste. B, Tustin, CA 92780

To pay by credit card, go to <https://tiny.cc/2w1psz>

# Gathering a Leadership Ethic

In this workshop you will be introduced to the choices leaders make to guide their approach to project, people and themselves: their leader ethic. Many of these choices we make unintentionally, so one of the objectives of this workshop is to make you more intentional about what you include in your leader ethic. This workshop also ties in the latest research into the positive and negative impacts of a leader's ethic and provides tools to develop your personal action plan that reflects your intentional leader ethic.

About our speaker: Kenneth Lamb is the faculty coordinator for the Engineering Leadership Program at Cal Poly Pomona. The ELP is a program that helps students develop their leadership awareness across four domains: Ethics, Self, Team and Project.



**KENNETH LAMB**  
Cal Poly Pomona

**NOV 18 • 6:00 PM TO 8:00 PM**



REGISTER AT  
[HTTP://TINY.CC/BLVYSZ](http://tiny.cc/blvysz)



**AES Advanced Earth Sciences, Inc.**  
Geotechnical and Environmental Consultants

Kris Khilnani, PE, GE - President  
Dr. Sujl Somasundaram, PE, GE - Principal Engineer  
Grant Miller, PG, CEG - Principal Geologist

(949) 379-2450  
9307 Research Drive FAX: (949) 379-2470  
Irvine, CA 92618 Website: www.aesinc.com

**ADVANCED ENGINEERING SOFTWARE**

Software written & supported by the  
**AUTHORS OF THE COUNTY MANUALS**

advancedengineeringsoftware.com  
SD: (760) 510-5940, OC: (657) 229-0090

**AECOM** Innovative & Delivered

With offices throughout Southern California,  
we deliver expert solutions for our clients.

One California Plaza  
300 South Grand Avenue  
Los Angeles, CA 90071  
Tel: (213) 553-1100  
www.aecom.com

**Cannon**  
ENGINEERING • PLANNING • CONSTRUCTION

J. Eric Porkert, PE  
General Manager and Senior Principal Engineer

Public Infrastructure; Land Development;  
Education; Energy; Survey & Mapping;  
Aerospace/Defense

310.664.1166  
www.CannonCorp.us

**CASC**  
Engineering and Consulting

Civil Engineering Environmental Engineering Land Planning  
Landscape Architecture Surveying & Geomatics  
Water Resources

www.cascinc.com

**CHJ CONSULTANTS IS NOW  
A TERRACON COMPANY!**

**CHJ Consultants**  
A Terracon Company

1355 E. Cooley Drive | Suite C | Colton, CA 92324  
(909) 824-7311 | chjconsultants.com

Environmental Facilities Geotechnical Materials

**CWE**

Civil Engineering  
Water Resources  
Stormwater Management  
Environmental  
Construction Management

Certified DBE, MBE, SBE

1561 E. Orangethorpe Avenue  
Suite 240  
Fullerton, CA 92831  
Telephone (714) 526-7500  
Fax (714) 526-7004  
info@cwecorp.com  
www.cwecorp.com

CIVIL WATER ENVIRONMENTAL

**DAVID EVANS AND ASSOCIATES INC.**

Land Development  
Transportation  
Surveying and  
Geomatics  
Water Resources  
Energy  
Marine Services

CALIFORNIA LOCATIONS  
Los Angeles | Tustin | Ontario | Santa Clarita | Temecula  
Victorville | San Diego 800.721.1916 • www.deainc.com

**DAVID R. GRAY, INC.**  
Surveys-Subdivisions-Mapping

David R. Gray  
CEO / Principal Land Surveyor

621 Via Alondra, Suite 609  
Camarillo, CA 93012 (805) 987-3945  
Fax: (805) 987-1655  
david@grayinc.com

**DIAZ-YOURMAN & ASSOCIATES**

Christopher M. Diaz, PE, GE  
Principal

Geotechnical Services

1616 East 17th Street Santa Ana CA 92705-8509  
Tel. (714) 245-2920 • Fax (714) 245-2950 • Cell (714) 412-2093  
chris@diazyourman.com www.diazyourman.com

**Earth Mechanics, Inc.**  
Geotechnical & Earthquake Engineering

Foundation Design  
Seismic Evaluation  
Soil-Structure Interaction  
Field Investigation and Laboratory Testing  
Grading and Foundation Inspections

www.earthmech.com  
San Marcos Fountain Valley Hayward  
760.736.8222 714.751.3826 510.562.8833

**GENTERRA Consultants, Inc.**

Joseph J. Kulikowski, P.E., G.E.  
President and Senior Principal Engineer

15375 Barranca Parkway, Building L  
Irvine, California 92618  
Tel: 949.753.8766  
Fax: 949.753.8887  
joekul@genterra.com  
www.genterra.com

CIVIL ENGINEERING • GEOTECHNICAL ENGINEERING • DAMS AND LEVEES  
CERTIFIED SMALL BUSINESS ENTERPRISE  
SERVICES PROVIDED NATIONWIDE

**GeoPentech**  
Geotechnical & Geosciences Consultants

- \* Geotechnical Engineering
- \* Engineering Geology
- \* Geo-Earthquake Engineering
- \* Hydrogeology
- \* Seismic Hazards Evaluation
- \* Seismic Geology
- \* Soil Dynamics/Vibrations
- \* Forensic Studies

Sarkis Tatusian, Principal Geotechnical Engineer  
5251 California Avenue, Suite 210  
Irvine, California 92617  
Phone: (714) 796-9100, FAX: (714) 796-9191  
Web Site: www.geopentech.com

**GPI**  
GEOTECHNICAL PROFESSIONALS, INC.

James E. Harris, G.E.  
Byron Konstantinidis, G.E.  
Paul R. Schode, G.E.

5736 Corporate Ave.  
Cypress, California 90630  
(714) 220-2211 Fax (714) 220-2122  
www.gpi-ca.com

**GREGG**

Phone: (562) 427-6899  
Fax: (562) 427-3314  
Email: info@greggdrilling.com  
Web Site: www.greggdrilling.com

**GREGG DRILLING & TESTING, INC.**

- ENVIRONMENTAL and GEOTECHNICAL DRILLING
- WELL INSTALLATION
- CONE PENETRATION TESTING

2726 WALNUT AVE. - SIGNAL HILL, CA 90755

**GROUP** **DELTA CONSULTANTS**

GEOTECHNICAL ENGINEERING  
MATERIALS TESTING & INSPECTION

Serving Southern California since 1986

Michael Reader, G.E.  
Principal Engineer  
Tom Swank, G.E.  
Principal Engineer

Group Delta Consultants, Inc.  
Los Angeles County: (310) 320-5100  
Orange County: (949) 609-1020  
San Diego County: (858) 524-1500  
www.GroupDelta.com

**gsi Geotechnical Stabilization, Inc.**

Amer R. Al-Alusi, P.E.  
President  
alusi@gsigrout.com

Chemical Grouting Compaction Grouting  
PressGrout Piles Helical Piers

1566 Sterling Court • Escondido, CA 92029-1208  
Phone (760) 489-6696 • Fax (760) 489-6697

**Hall & Foreman, Inc.**

**IS NOW** **DAVID EVANS AND ASSOCIATES INC.**

800.721.1916  
www.deainc.com  
www.hfinc.com

CALIFORNIA LOCATIONS: Los Angeles • Ontario • Sacramento • San Diego  
Santa Barbara • Santa Clarita • Temecula • Tustin • Victorville

**Ideas transform communities**

**hrr** **hrrinc.com**

**Kiewit**

KIEWIT INFRASTRUCTURE WEST CO.  
10704 Shoemaker Ave., Santa Fe Springs, CA 90670  
(562) 946-1816  
www.kiewit.com

**K&S KRIEGER & STEWART**  
Engineering Consultants

Water • Wastewater • Recycled Water • Storm Water  
Planning • CEQA/NEPA • Surveying  
Design • Construction Management • Inspection

Engineering the Details, Because Details Matter  
Riverside, CA 92501 • 951-684-6900 office  
www.kriegerandstewart.com

**KEHOE TESTING & ENGINEERING**

- Cone Penetration Testing (CPT)
- Direct Push Soil, Water & Vapor Sampling
- Truck Mounted, Track & Ltd. Access Rigs

Soil Testing & Sampling Services  
for Geotechnical & Environmental Consultants

5415 Industrial Drive  
Huntington Beach, CA 92649-1518  
(714) 901-7270 (714) 901-7289 fax  
STEVE KEHOE, P.E.  
PRESIDENT

**PROFESSIONAL PAVEMENT ENGINEERING**  
Since 1969 | VSR | Registered Civil Engineer

Pavement Testing, Analysis and Design  
AASHTO Accredited Laboratory  
CALTRANS Certified Technicians  
QOQA Testing Services  
FWD Pavement Deflection Testing  
GPR Pavement Thickness Scanning

**LM**  
LaBelle Marvin

2700 S. Grand Avenue | Santa Ana, CA 92705  
www.labellemarvin.com | Office (714) 546-3488  
email: gmarvin@labellemarvin.com

Geotechnical Environmental Site/Civil

**LANGAN**

www.langan.com 213.943.1310

Los Angeles Irvine Oakland Sacramento San Francisco San Jose  
CA NJ NY CT PA OH DC VA FL TX ND

**Leighton Consulting, Inc.**

866-LEIGHTON  
Thomas C. Benson, Jr., PE, GE | President and CEO

Geotechnical | Environmental | Testing and Inspection

Irvine  
Bakersfield  
Los Angeles  
Palm Desert  
Rancho Cucamonga  
San Diego  
Santa Clarita  
Temecula  
Ventura  
www.leightongroup.com

**Michael Baker INTERNATIONAL** *We Make a Difference*

Planning/Urban Design • Transportation/Traffic  
Land Development • Water Resources • Structures  
Survey/Mapping • Public Works • Surface Water

801 S. Grand Avenue, Suite 250, Los Angeles, CA 90017  
Anna Lantin, PE, Senior Vice President, (949) 472-3461

MBAKERINTL.COM

**MNS ENGINEERS INC.**

SERVICES  
Civil Engineering  
Construction Management  
Surveying

MARKETS  
Transportation  
Water Resources  
Federal  
Government

BUELLTON • LONG BEACH • PASADENA • SALINAS  
SAN JOSE • SAN LUIS OBISPO • SANTA BARBARA • WESTLAKE VILLAGE

**NMG**  
Geotechnical, inc.

Hayim Ninyo  
Ted Miyake

17991 Fitch, Irvine, CA 92614  
Phone (949) 442-2442 Fax (949) 476-8322  
E-Mail: hninyo@nmgeotechnical.com  
www.nmgeotechnical.com

**PACE**  
Advanced Water Engineering

...in partnership with nature

- Water / Wastewater
- Stormwater Management
- River / Wetland
- Manmade Lakes / Streams
- River Engineering
- Restoration
- Fountains / Pools

WWW.PACEWATER.COM  
HEADQUARTERS  
17520 Newhope Street, Suite 200 | Fountain Valley, California 92708  
main: 714.481.7300 fax: 714.481.7299  
ADDITIONAL LOCATIONS  
SCOTTSDALE, AZ • BEIJING, CHINA

**PARSONS**

100 W. Walnut Street  
Pasadena, California 91124  
(626) 440-3355 • Cell: (626) 710-0494  
Fax: (626) 440-6337  
satish.kamath@parsons.com

Satish Kamath, P.E., BCEE  
Vice President

www.parsons.com

**Port of LONG BEACH**  
THE PORT OF CHOICE

415 W. OCEAN BOULEVARD, LONG BEACH, CALIFORNIA 90802

**PSOMAS**

Civil Engineering Land Surveying  
Construction Management Environmental Consulting

Balancing the Natural and Built Environment

**Project X Corrosion**  
MBE • DBE • SBE • SBA 8(a)  
Soil Testing • Metallurgy Lab  
Corrosion Control Consulting  
Thermal & Forensic Engineering  
Ed Hernandez, PE, NACE CCT  
info@projectxcorrosion.com  
Phone: 213-928-7213 • Projectxcorrosion.com

**rrm design group**  
CIVIL ENGINEERS • STRUCTURAL ENGINEERS • SURVEYORS  
ARCHITECTS • LANDSCAPE ARCHITECTS • PLANNERS  
rrmdesign.com

**Stantec**  
We bring infrastructure projects to life  
523 West 6th Street, Suite 1200  
Los Angeles, CA 90014  
askstantec@stantec.com  
Design with community in mind  
stantec.com

Civil Engineering • Water Resources • Construction Management  
Environmental • Surveying • Program Management • Inspection  
**TKE ENGINEERING INC.**  
2305 Chicago Avenue • Riverside • CA • 92507  
Ph. (951) 680-0440 • Fax (951) 680-0490  
www.tkeengineering.com

**VA CONSULTING**  
www.vacconsultinginc.com  
Max Vahid, P.E.  
President and CEO  
maxvahid@vacconsultinginc.com  
Tel: 949.474.1400 • Fax: 949.261.8482  
Engineering Services in:  
Flood Control • Drainage • Water Quality  
Potable Water • Recycled Water • Wastewater  
Transportation • Traffic • Plan Checking  
Structural • Land Use Planning • Site Development  
Surveying • Construction Management  
Offices in: Irvine • Corona • Palm Desert

**VALUED ENGINEERING, INC.**  
"Engineering with values and integrity"  
CIVIL ENGINEERING • LAND SURVEYING • LAND PLANNING  
600 N. Mountain Avenue, Suite #C102  
Upland, CA 91786  
Office: (909) 982-4601  
Cell: (909) 927-7347  
jeff@valued-eng.com  
www.valued-eng.com  
Jeff D. Meiter, LS, RCE  
President

**wood.**  
6001 Rickenbacker Road  
Commer, California  
USA 90040-3031  
www.woodplc.com  
D. Bruce Corkle, PE  
T: 323 889 5300  
F: 323 721 6700  
• General Civil Engineering  
• Geotechnical/Seismic Engineering  
• Materials Inspection/Testing  
• Environmental Science/Engineering/Compliance  
• Planning and NEPA/CEQA

# CALL FOR COMMITTEE MEMBERS

## COMMUNICATION & WEB DEVELOPMENT

Sam Potts - saml.potts@yahoo.com

## DISASTER PREPAREDNESS

Dr. Keith Thomsen via sking@octa.net

## HISTORY & HERITAGE

William Lawson - williamlawsonpe@gmail.com

## LEGISLATIVE ACTIVITIES

Jeff Meiter - jeff@valued-eng.com

## WATER POLICY

Dolores Salgado - dsalgado@iecorporation.com



LOS ANGELES SECTION



### Reminder:

Copy deadline for the November 2020 issue is October 1, 2020; copy deadline for the December 2020 issue is November 1, 2020.

National ASCE (800) 548-2723 (ASCE)

Access National ASCE at: [www.asce.org](http://www.asce.org)

L.A. Section web site at:  
[www.ascelasection.org](http://www.ascelasection.org)

## MATERIALS SUBMISSION INFORMATION

All graphic materials submitted for use in the ASCE newsletter should have all fonts outlined, and links included; EPS or PDF files preferred. Other formats are Adobe InDesign or Adobe Illustrator (any version); additional acceptable file formats are JPEG or TIFF files (minimum 300 dpi). Images embedded in Microsoft Word documents should be sent separately, at a minimum resolution of 300 dpi at the display size desired. Collected files, including links and fonts, should be compressed and e-mailed, or sent on CD or Zip disk (provide return address). Business cards can be submitted electronically as well, or send clean, crisp, B&W laser print, unfolded. This publication's size is 8½" x 11".



# Los Angeles Section

Monthly: Est. 1913

1405 WARNER AVE.  
SUITE B  
TUSTIN, CA 92780

POSTMASTER: THIS CONTAINS TIME-SENSITIVE MATERIALS.  
PLEASE DELIVER PROMPTLY.



This newsletter is printed on  
Forest Stewardship Council  
(FSC)-certified paper using  
soy-based ink.

**Please contact ASCE Membership at  
1-800-548-ASCE for any address changes.**

## ASCE Los Angeles Section Officer's Roster: 2020-2021

President	Seema Shah-Fairbank, Ph.D., P.E.	Cal Poly Pomona	(909) 869-3954	shahfairbank@cpp.edu
President-Elect	Jeff Braun, P.E.	ENGEO	(949) 296-4848	jbraun@engeo.com
Past President	Daniel Cronquist, P.E., P.L.S.	AECOM	(661) 283-2331	daniel.cronquist@aecom.com
Secretary	Preston Kamada, P.E.	AECOM	(808) 341-7086	preston.kamada@aecom.com
Treasurer	Melissa Barbosa, P.E.	Azusa Light & Water	(626) 812-5173	mbarbosa@azusaca.gov
Vice-President Student Activities	Sudarshan Kurwadkar, Ph.D, P.E.	California State University Fullerton	(657) 278-2457	skurwadkar@fullerton.edu
Vice-President Technical Groups	Lisette Bice, P.E.	Ardurra Group, Inc.	(949) 387-2210	lbice@ardurra.com
Desert Area	Inactive			
Metropolitan Los Angeles	Ruwanka Purasinghe, EIT	LADWP	(626) 862-4275	ruwanka.purasinghe@ladpw.com
Orange County Branch	Clint Isa, P.E.	Diaz Yourman & Associates	(714) 245-2920 x243	clint@diazyourman.com
San Bernardino/Riverside Counties	Victor Elia, P.E.	KWC Engineers	(951) 847-6750	victor.elia@kwceengineers.com
San Luis Obispo	Nathan Stong, P.E.	Rick Engineering	(805) 544-0707	nstong@rickengineering.com
Santa Barbara/Ventura Counties	Brad Rahrer, P.E.	City of Santa Barbara	(805) 568-1080	brahrer@santabarbaraca.gov
Southern San Joaquin	Cathy Williams, P.E.	QK Inc.		cathy.williams@qkinc.com
Younger Member Forum	Eric Aubry, P.E.	HDR Inc.		eric.aubry@hdrinc.com
Life Member Forum	William Lawson, P.E.	Retired	(949) 813-0270	willamlawsonpe@gmail.com
Region 9 Governor	Tapas Dutta, P.E.	CNC Engineering	(626) 956-8039	tdutta@cnc-eng.com

## NEWSLETTER INFORMATION

### Publisher

ASCE LA Section  
Gayle Stewart  
1405 Warner Ave., Suite B  
Tustin, CA 92780  
Phone (714) 258-8306  
Fax (714) 784-7806  
E-mail: gstewart@gsecorp.org

### Editor

Dr. Cris B. Liban, P.E.  
LACMTA  
One Gateway Plaza  
Mail Stop 99-16-9  
Los Angeles, CA 90012  
Phone (213) 922-2471  
FAX (213) 922-6875  
E-mail: cliban@alumni.ucla.edu  
Typesetting, Layout & Printing: Apollo Printing & Graphics



Please send all copy to the Editor by  
the first of the month preceding publication.

### Identification Statement

ASCE Newsletter, (ISSN 0273-6233)  
is published monthly by ASCE,  
Los Angeles Section, 1405 Warner Ave.  
Tustin, California 92780. Subscription price  
included in Section dues of \$55.

### Circulation

Circulated monthly (except for a joint  
July/August issue) to the 5,000 subscribing  
members of the Los Angeles Section, ASCE.

## NEW Advertising Rates

EMPLOYMENT ADS	DISPLAY ADS
\$100/column inch	1/8 page \$200
	1/4 page \$300
	1/2 page \$465
	1 page \$740

### PROFESSIONAL DIRECTORY

\$450 per business card for a full year  
(Additional fees may be applied for typesetting.  
Please call for information.)

### POSITION WANTED ADS

No cost to L.A. Section members.

For more advertising and billing information,  
please contact Gayle Stewart at (714) 258-8306  
or gstewart@associationplanet.com

National ASCE (800) 548-2723 (ASCE)  
Access National ASCE at: [www.asce.org](http://www.asce.org)  
L.A. Section web site at: [www.ascelasection.org](http://www.ascelasection.org)